

COMMUNITY PROFILE

Darlington County



S.C. Department of Employment & Workforce

Business Intelligence Department

1550 Gadsden Street, PO Box 995

Columbia, SC 29202

803.737.2660

www.SCWorkforceInfo.com

Updated: 09/14/2017



Table Of Contents

1. Economic Data

Annual Unemployment Rates.....	1
Monthly Unemployment Rates.....	2
Area Job Openings.....	3
Unemployment Insurance.....	4
Demographic Data.....	4
Industry Data.....	5
Occupation Data.....	6
Retail Sales.....	7

2. Demographic Data

Population.....	8
Age.....	8
Race.....	9
Gender.....	9
Change.....	10
Commuting Patterns.....	11
Residents Commuting To.....	12
Workers Commuting From.....	12
Employer Data.....	13
Size of Establishments.....	13
Employment by Size of Establishment.....	13
20 Largest Employers	14

3. Industry Data

Employment by Industry.....	15
New Startup Firms.....	16
Top Occupational Openings.....	17
New Hires by Industry.....	18
Turnover by Industry.....	19
Average Annual Wage by Industry.....	20
Age of Workers by Industry.....	21
Projections by Industry.....	22

4. Occupation Data

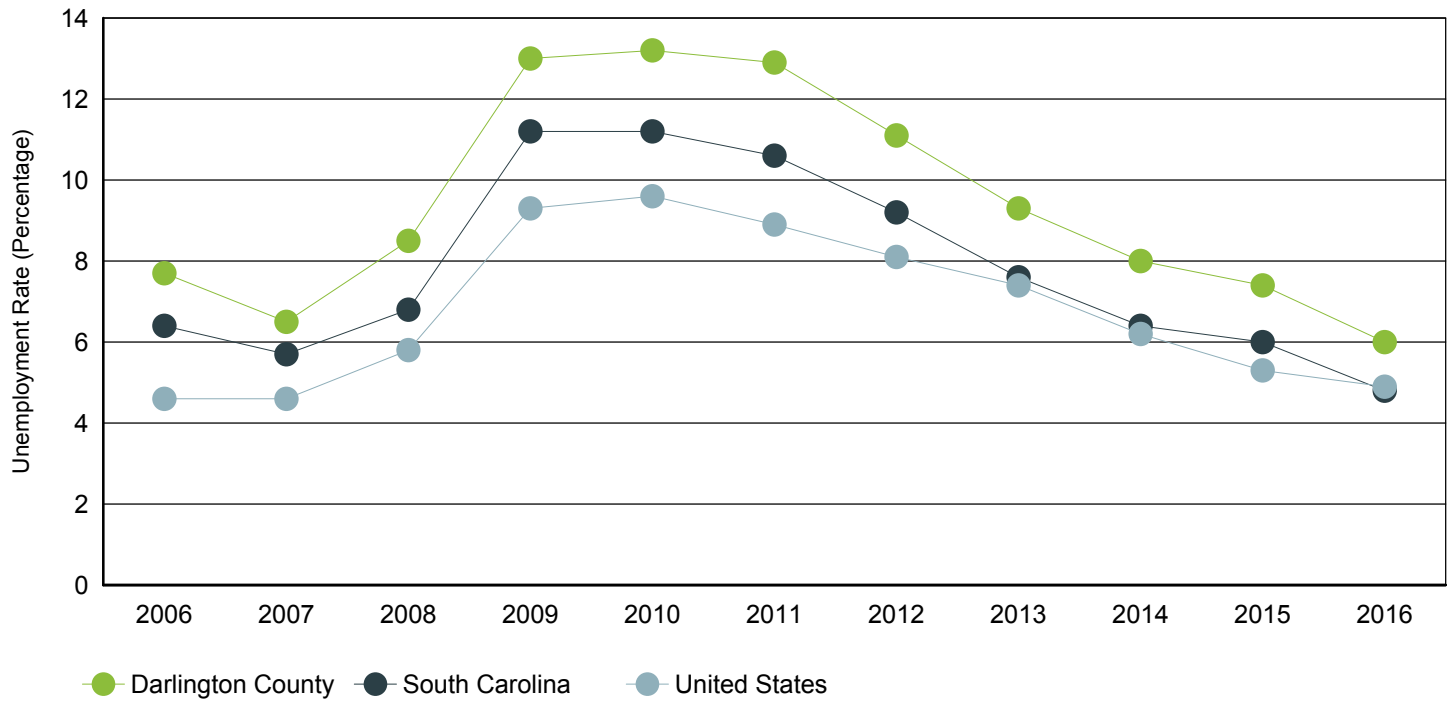
Projections by Occupation.....	23
Growing Occupations.....	24
Declining Occupations.....	25

5. Education Data

Educational Attainment.....	26
Graduate Trends.....	27
Educational Institutions.....	28

Annual Unemployment Rate (Unadjusted)

Trends

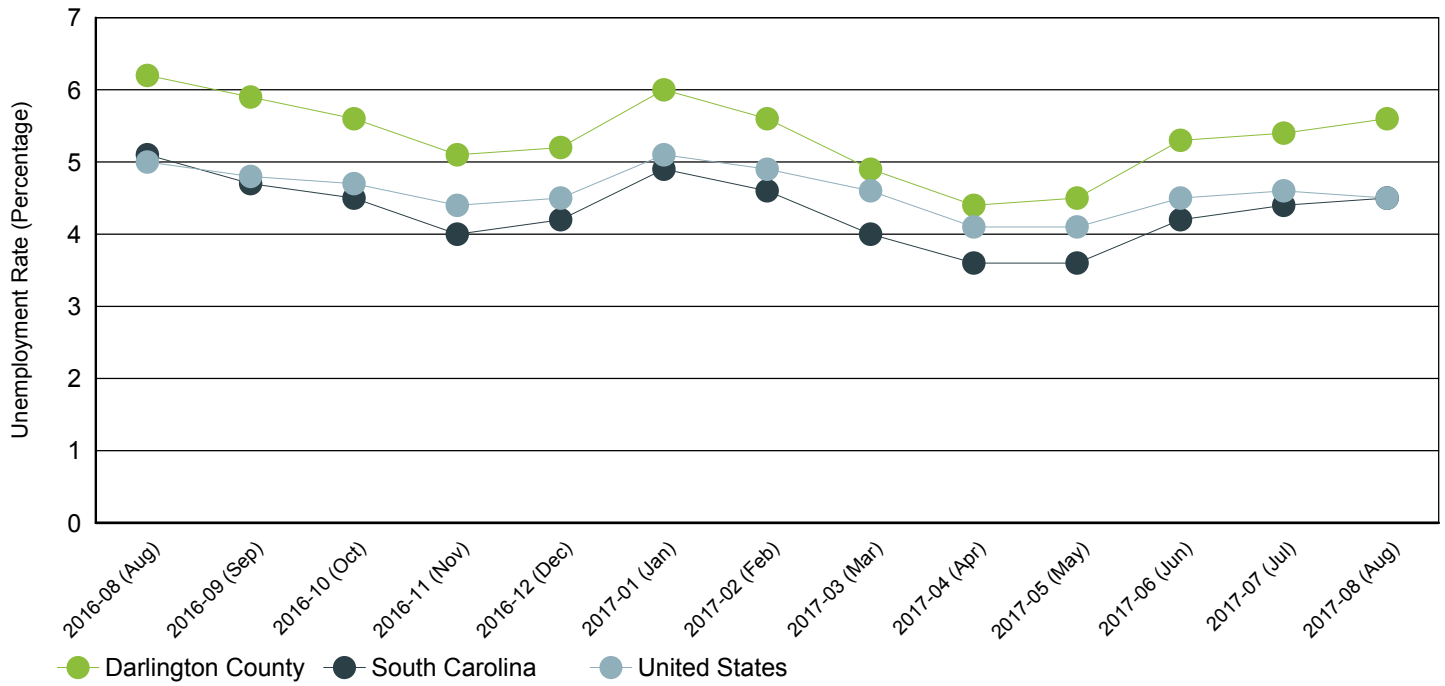


Year	Darlington County			South Carolina			United States		
	Employment	Unemp	Rate	Employment	Unemp	Rate	Employment	Unemp	Rate
2016	28,260	1,819	6.0%	2,186,740	111,067	4.8%	151,436,000	7,751,000	4.9%
2015	27,856	2,226	7.4%	2,134,637	135,746	6.0%	148,834,000	8,296,000	5.3%
2014	27,402	2,370	8.0%	2,081,511	143,151	6.4%	146,305,000	9,617,000	6.2%
2013	27,316	2,814	9.3%	2,026,666	167,647	7.6%	143,929,000	11,460,000	7.4%
2012	27,048	3,364	11.1%	1,985,618	201,260	9.2%	142,469,000	12,506,000	8.1%
2011	26,517	3,933	12.9%	1,945,900	229,623	10.6%	139,869,000	13,747,000	8.9%
2010	26,555	4,035	13.2%	1,915,045	240,623	11.2%	139,064,000	14,825,000	9.6%
2009	27,033	4,035	13.0%	1,910,670	242,075	11.2%	139,877,000	14,265,000	9.3%
2008	28,493	2,650	8.5%	1,996,409	145,823	6.8%	145,362,000	8,924,000	5.8%
2007	28,762	2,008	6.5%	2,005,686	120,205	5.7%	146,047,000	7,078,000	4.6%
2006	28,639	2,381	7.7%	1,973,337	135,760	6.4%	144,427,000	7,001,000	4.6%

Source: S.C. Department of Employment & Workforce

Monthly Unemployment Rate (Unadjusted)

Past 13 Months



Period	Darlington County	South Carolina	United States
Aug 2017	5.6%	4.5%	4.5%
Jul 2017	5.4%	4.4%	4.6%
Jun 2017	5.3%	4.2%	4.5%
May 2017	4.5%	3.6%	4.1%
Apr 2017	4.4%	3.6%	4.1%
Mar 2017	4.9%	4.0%	4.6%
Feb 2017	5.6%	4.6%	4.9%
Jan 2017	6.0%	4.9%	5.1%
Dec 2016	5.2%	4.2%	4.5%
Nov 2016	5.1%	4.0%	4.4%
Oct 2016	5.6%	4.5%	4.7%
Sep 2016	5.9%	4.7%	4.8%
Aug 2016	6.2%	5.1%	5.0%

Source: S.C. Department of Employment & Workforce

Area Job Openings

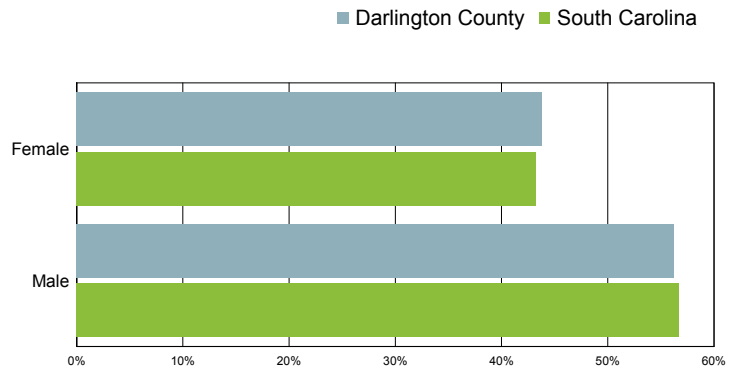
Period	Darlington County				South Carolina			
	Employed	Unemployed	Unemp. Rate	Job Openings	Employed	Unemployed	Unemp. Rate	Job Openings
Aug-17	28,863	1,717	5.6%	320	2,225,610	93,067	4.0%	61,865
Jul-17	29,087	1,659	5.4%	312	2,227,818	91,607	3.9%	62,395
Jun-17	29,151	1,616	5.3%	320	2,230,571	91,627	3.9%	66,498
May-17	29,131	1,371	4.5%	284	2,231,971	96,526	4.1%	65,966
Apr-17	29,082	1,338	4.4%	222	2,232,681	101,458	4.3%	63,951
Mar-17	28,998	1,481	4.9%	322	2,229,182	103,639	4.4%	59,863
Feb-17	28,675	1,711	5.6%	285	2,220,060	103,363	4.4%	61,052
Jan-17	28,390	1,800	6.0%	297	2,209,188	101,455	4.4%	64,254
Dec-16	28,235	1,557	5.2%	297	2,199,862	98,225	4.3%	55,454
Nov-16	28,333	1,519	5.1%	329	2,198,274	99,867	4.3%	59,494
Oct-16	28,308	1,675	5.6%	343	2,196,147	101,772	4.4%	59,888
Sep-16	28,345	1,790	5.9%	403	2,193,612	104,025	4.5%	61,522
Aug-16	28,547	1,900	6.2%	287	2,190,670	106,559	4.6%	63,800

Source: S.C. Department of Employment & Workforce & The Conference Board's Help Wanted OnLine® data series
 South Carolina Data is Seasonally Adjusted

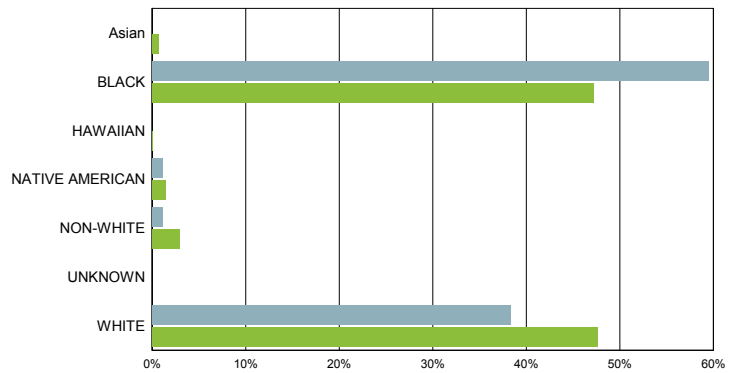
Characteristics of Unemployment Insurance Claimants

August 2017

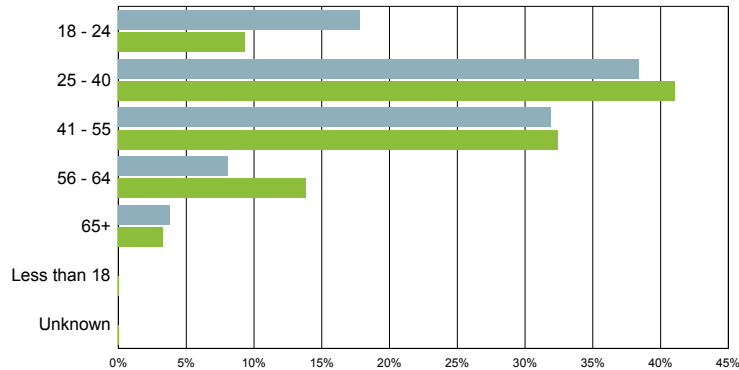
Gender	Darlington County	South Carolina
Female	81	5,030
Male	104	6,595



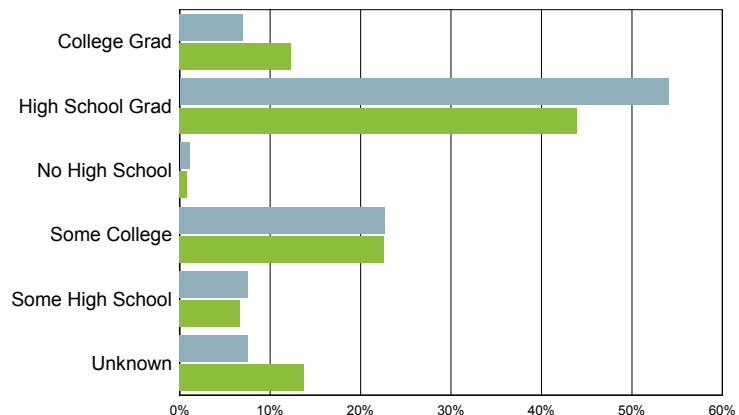
Race	Darlington County	South Carolina
Asian	0	78
BLACK	110	5,482
NATIVE AMERICAN	2	164
NON-WHITE	2	347
WHITE	71	5,542



Age Group	Darlington County	South Carolina
18 - 24	33	1,084
25 - 40	71	4,771
41 - 55	59	3,772
56 - 64	15	1,610
65+	7	380
Less than 18	0	3
Unknown	0	5



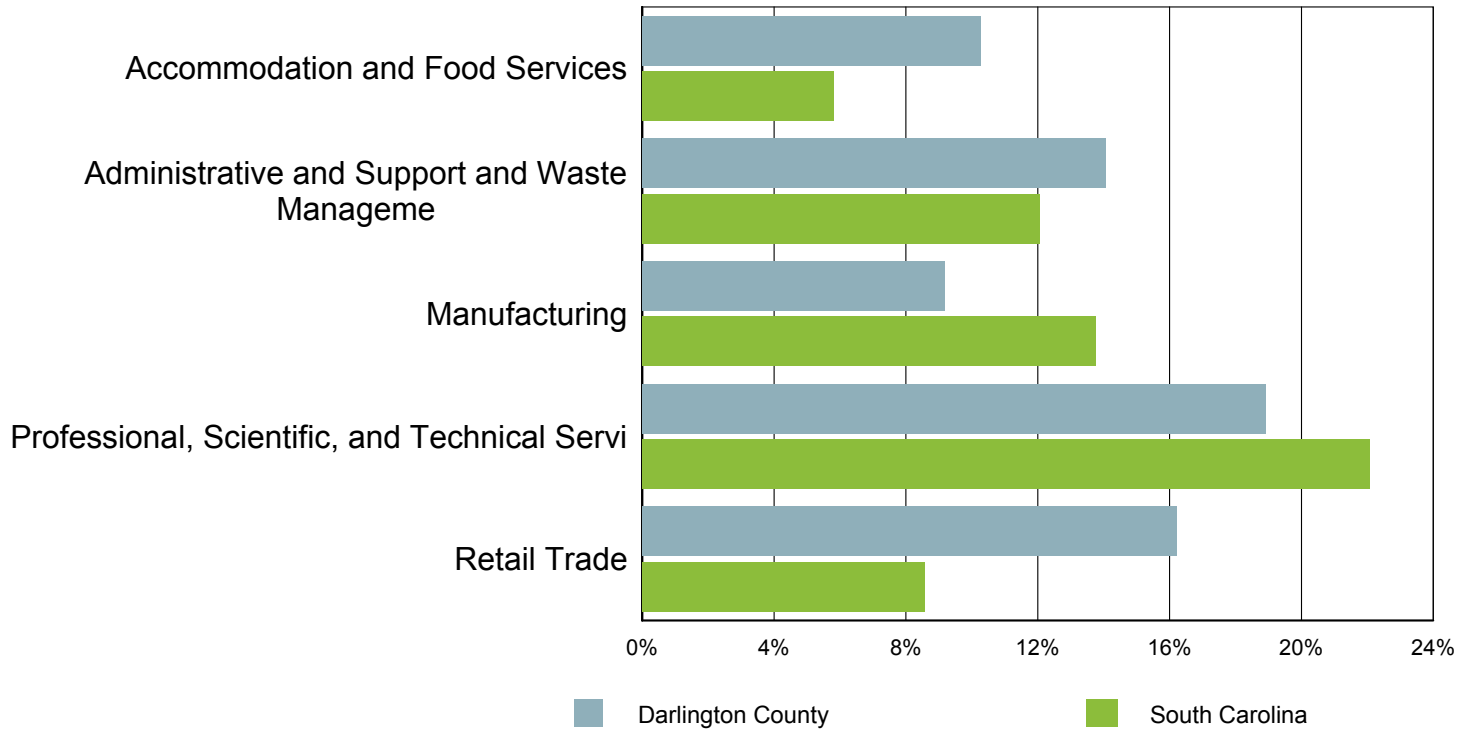
Education	Darlington County	South Carolina
College Grad	13	1,430
Some College	42	2,629
High School Grad	100	5,108
Some High School	14	774
No High School	2	89
Unknown	14	1,595



Source: S.C. Department of Employment & Workforce

Characteristics of Unemployment Insurance Claims by Industry

Industry Groups With Largest Number of Claims
August 2017

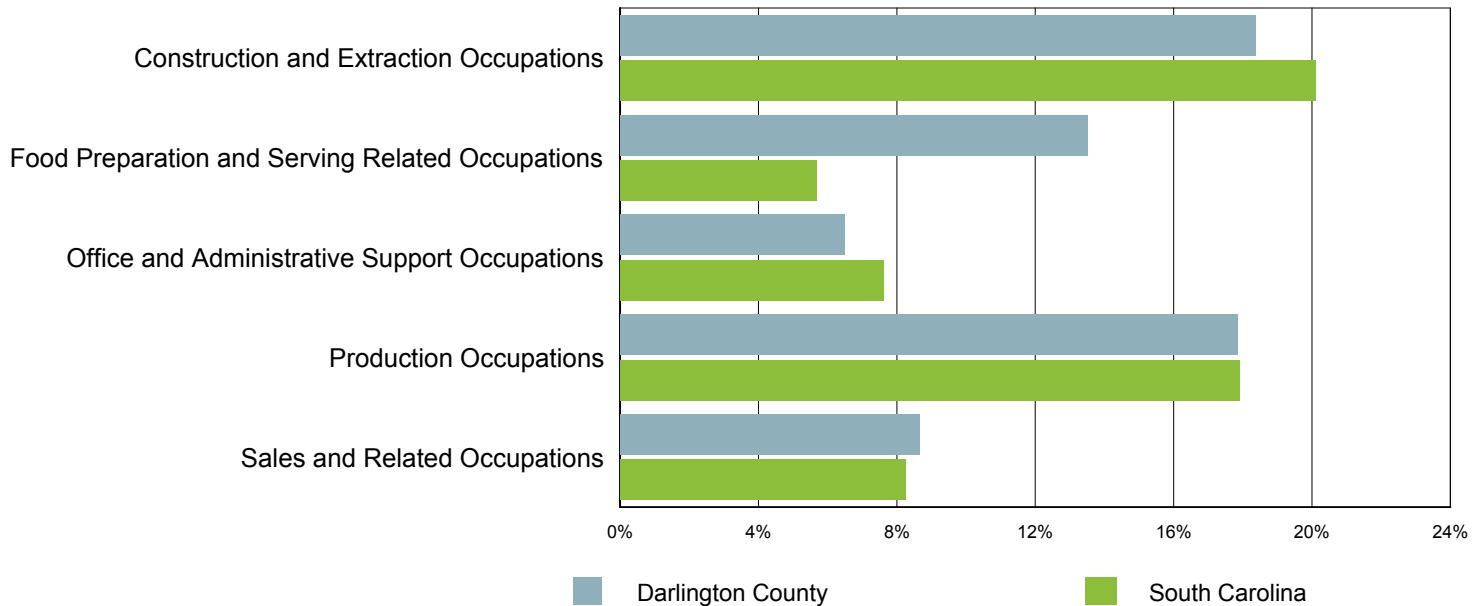


Industry	Darlington County	South Carolina
Construction	11	932
Manufacturing	17	1,601
Wholesale Trade	3	340
Retail Trade	30	997
Transportation and Warehousing	9	277
Information	2	121
Finance and Insurance	1	183
Real Estate and Rental and Leasing	1	134
Professional, Scientific, and Technical Servi	35	2,569
Management of Companies and Enterprises	3	39
Administrative and Support and Waste Manageme	26	1,403
Educational Services	5	198
Health Care and Social Assistance	8	733
Arts, Entertainment, and Recreation	1	64
Accommodation and Food Services	19	676
Other Services (except Public Administration)	3	190
Public Administration	5	152
Unknown	6	951

Source: S.C. Department of Employment & Workforce

Characteristics of Unemployment Insurance Claims by Occupation

Occupation Groups With Largest Number of Claims
August 2017



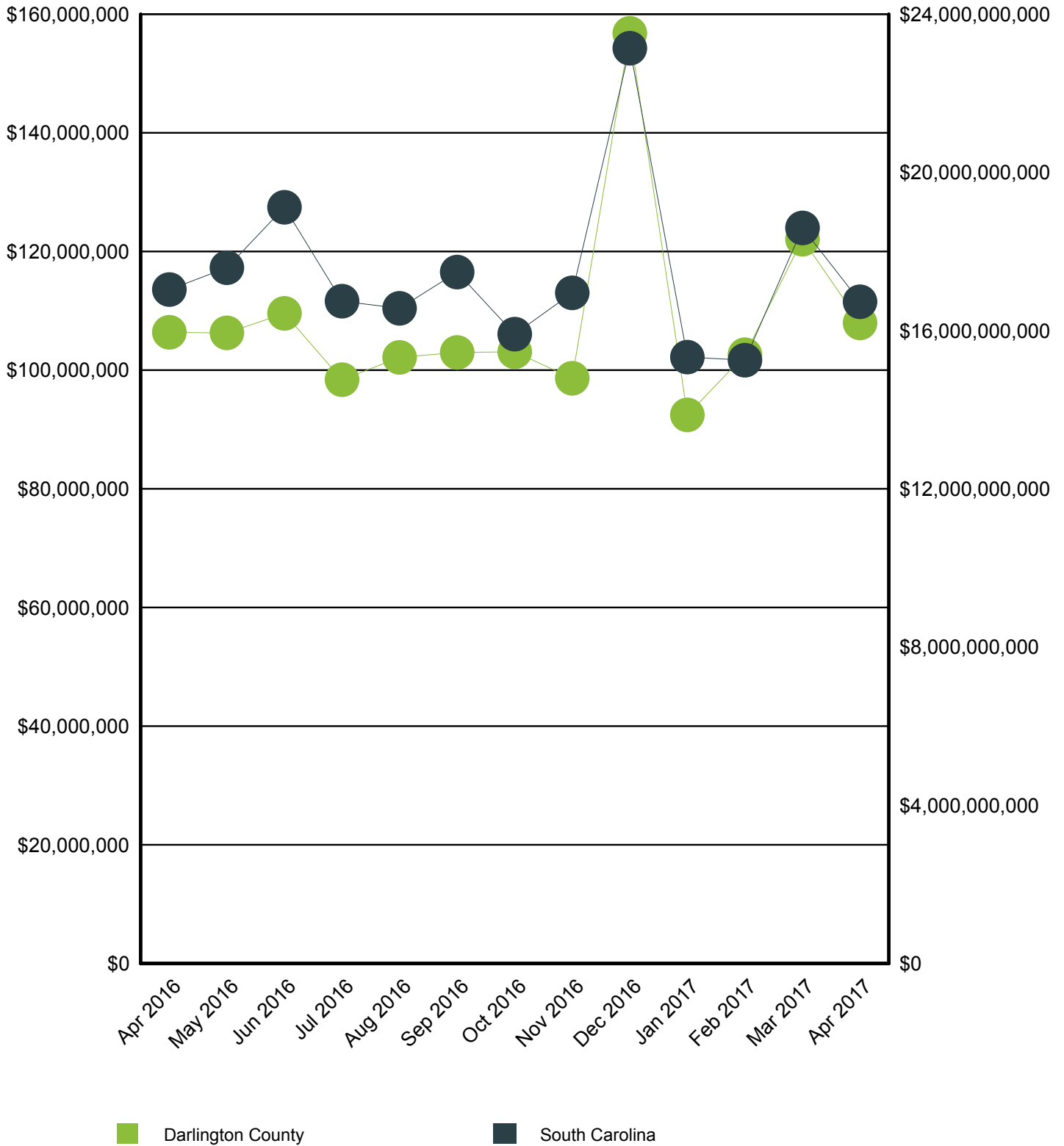
Occupation	Darlington County	South Carolina
Architecture and Engineering Occupations	5	518
Arts, Design, Entertainment, Sports, and Media Occ	1	78
Building and Grounds Cleaning and Maintenance Occu	5	335
Business and Financial Operations Occupations	2	334
Community and Social Service Occupations	1	61
Computer and Mathematical Occupations	2	195
Construction and Extraction Occupations	34	2,340
Education, Training, and Library Occupations	6	177
Food Preparation and Serving Related Occupations	25	662
Healthcare Practitioners and Technical Occupations	3	179
Healthcare Support Occupations	4	427
Installation, Maintenance, and Repair Occupations	8	301
Management Occupations	5	688
Office and Administrative Support Occupations	12	887
Personal Care and Service Occupations	1	126
Production Occupations	33	2,084
Protective Service Occupations	3	115
Sales and Related Occupations	16	962
Transportation and Material Moving Occupations	9	430
Unknown	10	600

Source: S.C. Department of Employment & Workforce

Retail Sales

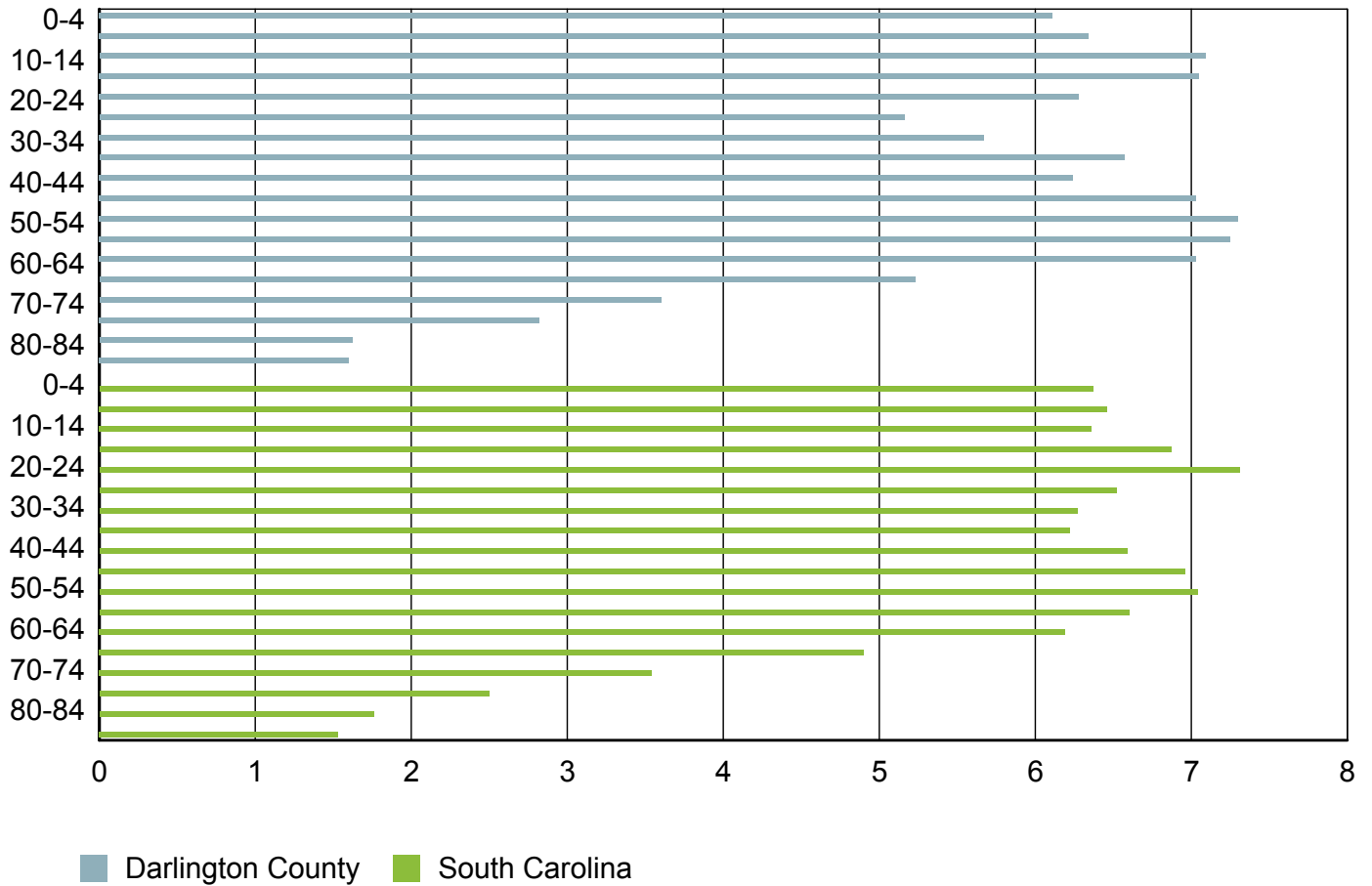
Darlington County

South Carolina



Source: S.C. Department of Revenue

Population by Age



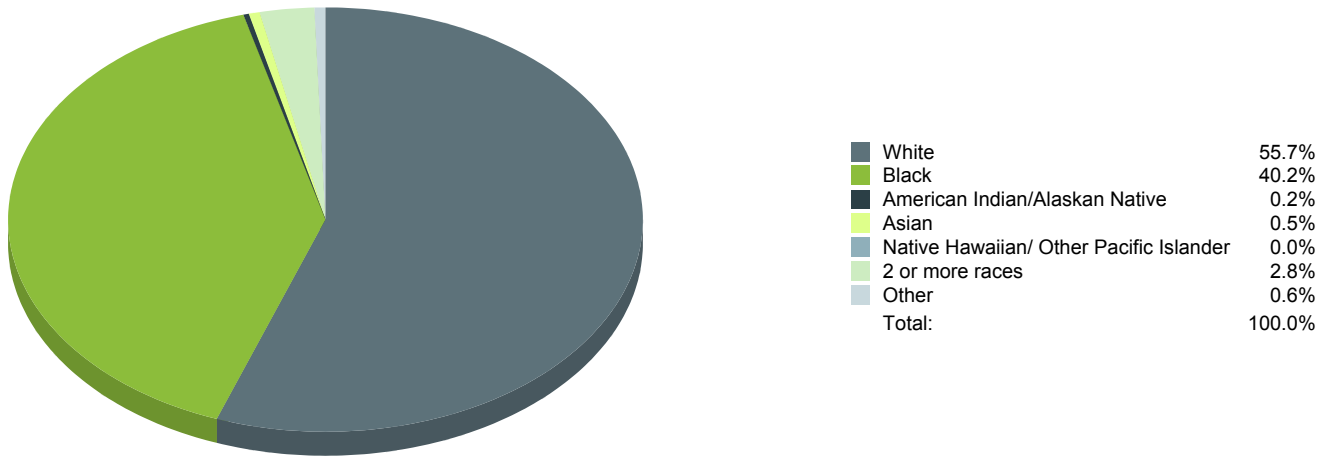
Age Range	Darlington County	South Carolina	United States
0-4	4,179	298,242	20,052,112
5-9	4,336	302,111	20,409,060
10-14	4,848	297,443	20,672,609
15-19	4,817	321,540	21,715,074
20-24	4,295	342,237	22,099,887
25-29	3,524	305,167	21,243,365
30-34	3,878	293,464	20,467,912
35-39	4,491	291,183	19,876,161
40-44	4,265	308,158	20,998,001
45-49	4,805	325,660	22,109,946
50-54	4,989	329,431	22,396,322
55-59	4,953	309,061	20,165,892
60-64	4,805	289,690	17,479,211
65-69	3,573	229,251	13,189,508
70-74	2,459	165,797	9,767,522
75-79	1,928	117,187	7,438,750
80-84	1,109	82,223	5,781,697
85 and older	1,092	71,757	5,673,565

Source: U.S. Census Bureau, American Community Survey

Population by Race

Race	Darlington County	%	South Carolina	%	United States	%
White	38,607	56.5%	3,144,146	66.0%	230,592,579	72.0%
Black	27,899	40.8%	1,298,534	27.3%	39,167,010	12.2%
American Indian/Alaskan Native	123	0.2%	14,732	0.3%	2,540,309	0.8%
Asian	318	0.5%	61,097	1.3%	15,231,962	4.8%
Native Hawaiian/ Other Pacific Islander	0	0.0%	2,128	0.0%	526,347	0.2%
2 or more races	1,950	2.9%	169,670	3.6%	17,464,666	5.5%
Other	424	0.6%	74,130	1.6%	14,746,054	4.6%

Source: U.S. Census Bureau, American Community Survey



Population by Gender

Gender	Darlington County	South Carolina	United States
Male	32,379	2,276,305	153,247,412
Female	35,967	2,403,297	158,289,182

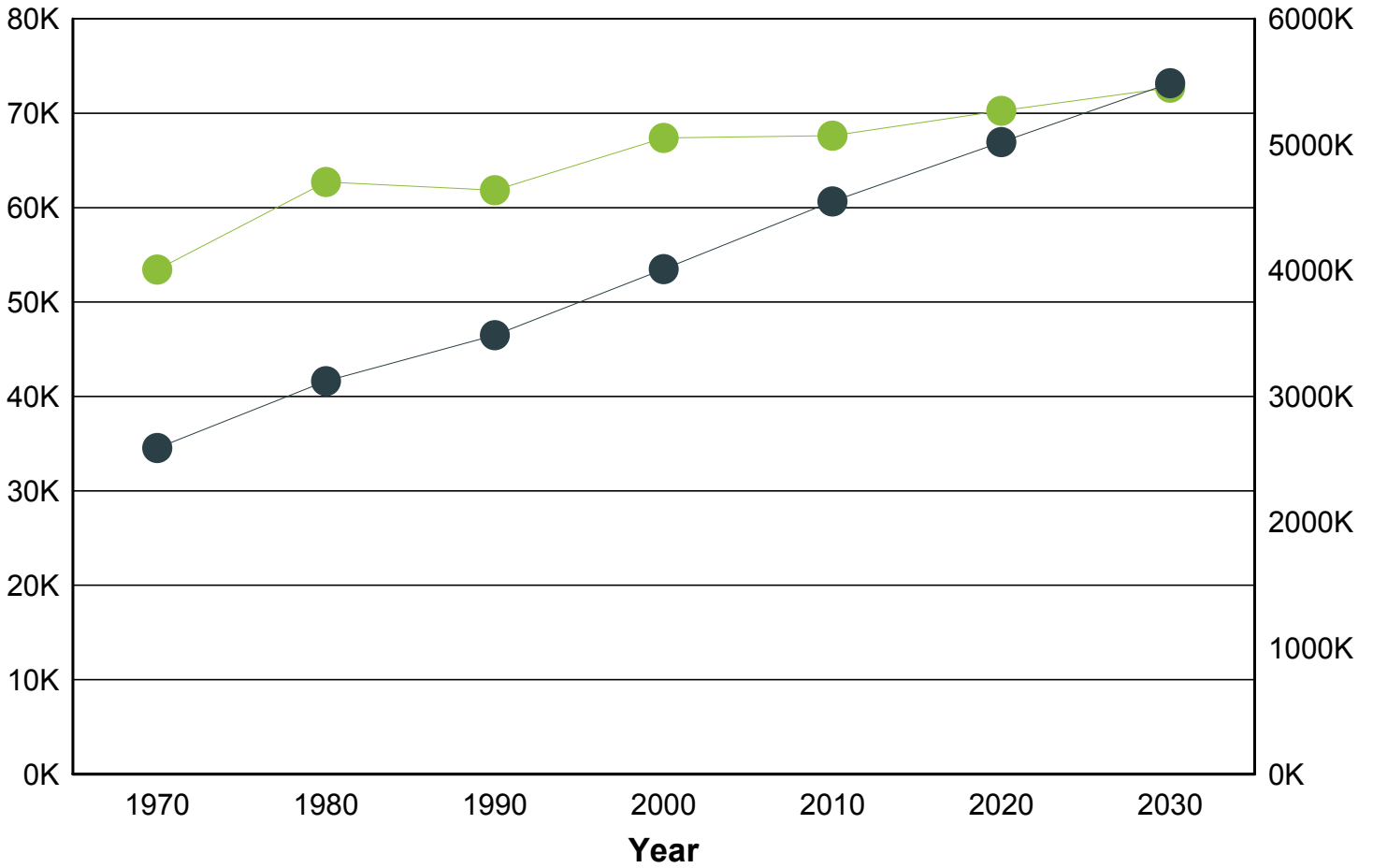
Source: U.S. Census Bureau, American Community Survey

Population Change

Historical and Projected

Darlington County

South Carolina

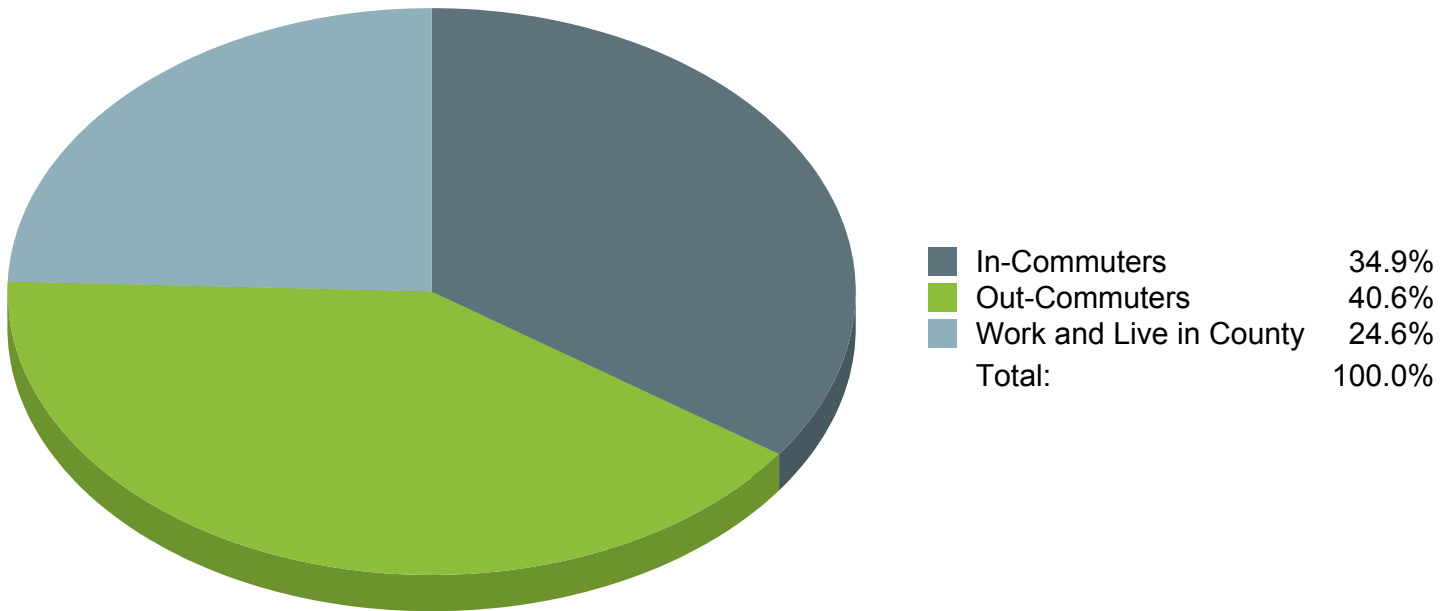


■ Darlington County
 ■ South Carolina

Year	Darlington County	South Carolina
1970	53,442	2,590,713
1980	62,717	3,121,820
1990	61,851	3,486,310
2000	67,394	4,012,012
2010	67,620	4,549,150
2020	70,260	5,020,400
2030	72,710	5,488,460

Source: U.S. Census Bureau

Commuting Patterns



Commuting Patterns	Workers
Work and Live in County	16,663
In-Commuters	23,639
Out-Commuters	27,513

Source: U.S. Census Bureau - 2010

Top 10 Places Residents Are Commuting To

Area	Workers
Florence County, SC	8,050
Chesterfield County, SC	881
Lee County, SC	363
Marlboro County, SC	278
Sumter County, SC	160
Richland County, SC	108
Kershaw County, SC	104
Lexington County, SC	103
Horry County, SC	70
WAKE COUNTY, NC	57

Source: U.S. Census Bureau - 2010

Top 10 Places Residents Are Commuting From

Area	Workers
Florence County, SC	3,212
Chesterfield County, SC	1,827
Lee County, SC	488
Kershaw County, SC	194
Marlboro County, SC	132
Horry County, SC	124
Richland County, SC	122
Sumter County, SC	113
LEE COUNTY, NC	80
Dillon County, SC	74

Source: U.S. Census Bureau - 2010

Employers by Size of Establishment

Employees	Darlington County	South Carolina
0 to 4	555	73,908
5 to 9	205	20,075
10 to 19	148	14,598
20 to 49	119	11,233
50 to 99	32	4,380
100 to 249	32	2,757
250 to 499	7	834
500 to 999	0	382
1000 +	0	297

Source: S.C. Department of Employment & Workforce - 2016 Q4
 - Indicates that the requested data is suppressed

Employment by Size of Establishment

Employees	Darlington County	South Carolina
0 to 4	983	110,956
5 to 9	1,372	133,646
10 to 19	2,005	198,475
20 to 49	3,662	342,297
50 to 99	2,245	301,791
100 to 249	4,652	415,922
250 to 499	2,702	289,015
500 to 999	0	261,477
1000 +	0	762,450

Source: S.C. Department of Employment & Workforce - 2016 Q4
 - Indicates that the requested data is suppressed

20 Largest Employers

(Listed Alphabetically)

Corporation Name

ARDS TRUCKING COMPANY INC

CARESOUTH CAROLINA INC

CITI TRENDS INC

COKER COLLEGE

DARLINGTON CNTY DISABILITIES & SPEC

DARLINGTON COUNTY

DARLINGTON COUNTY SCHOOL DISTRICT

DIXIE CONSUMER PRODUCTS LLC

DUKE ENERGY PROGRESS INC

HARTSVILLE LLC

MANHEIM REMARKETING INC

MOR PPM INC

MORRELL NURSING CENTER LLC

NSLC DARLINGTON INC

NUCOR CORPORATION

PFC INC

SONOCO PRODUCTS COMPANY

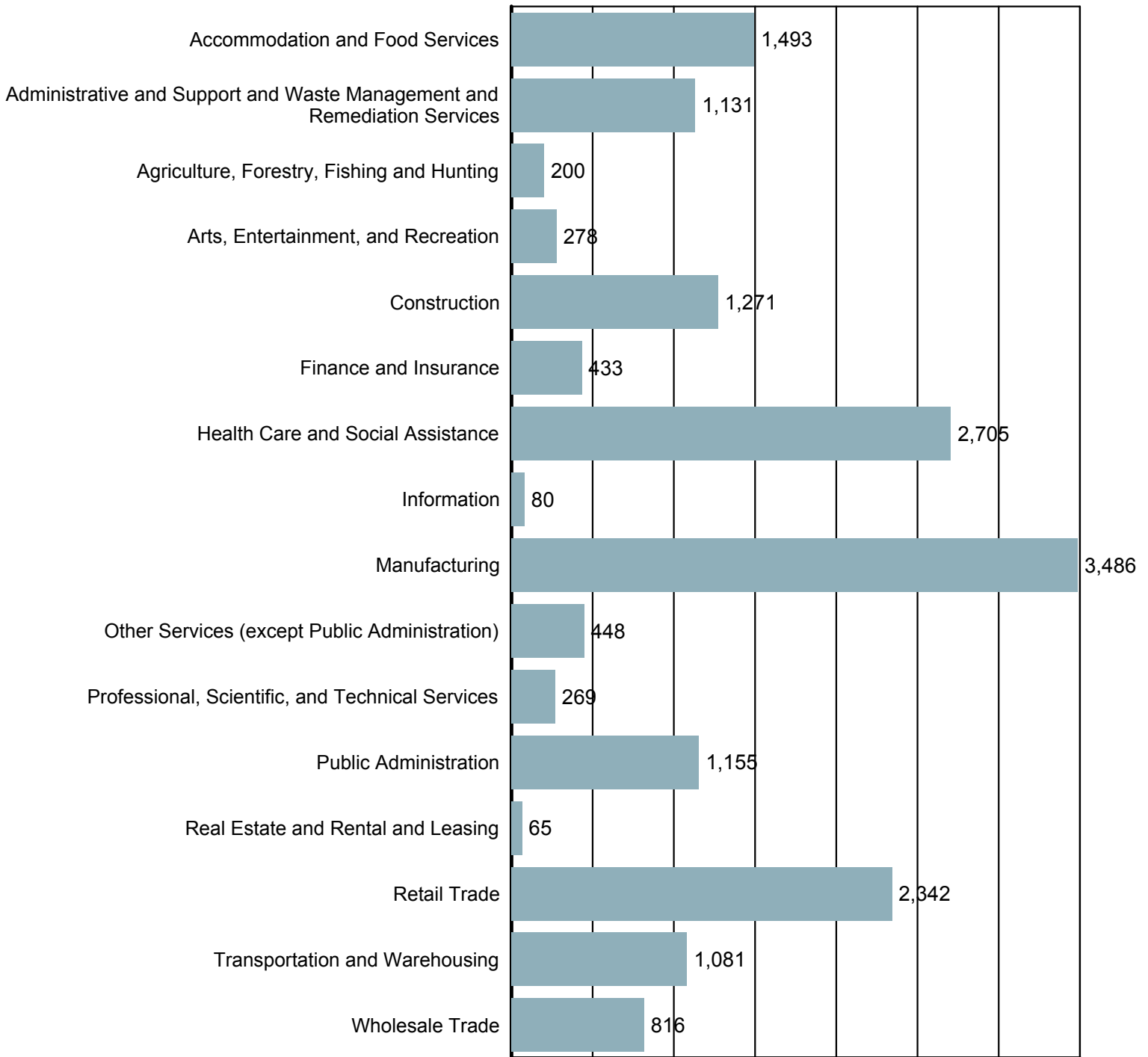
UNITED PARCEL SERVICE

WAL-MART ASSOCIATES INC

WEST OIL COMPANY INC

Source: S.C. Department of Employment & Workforce - 2016 Q4

Employment by Industry

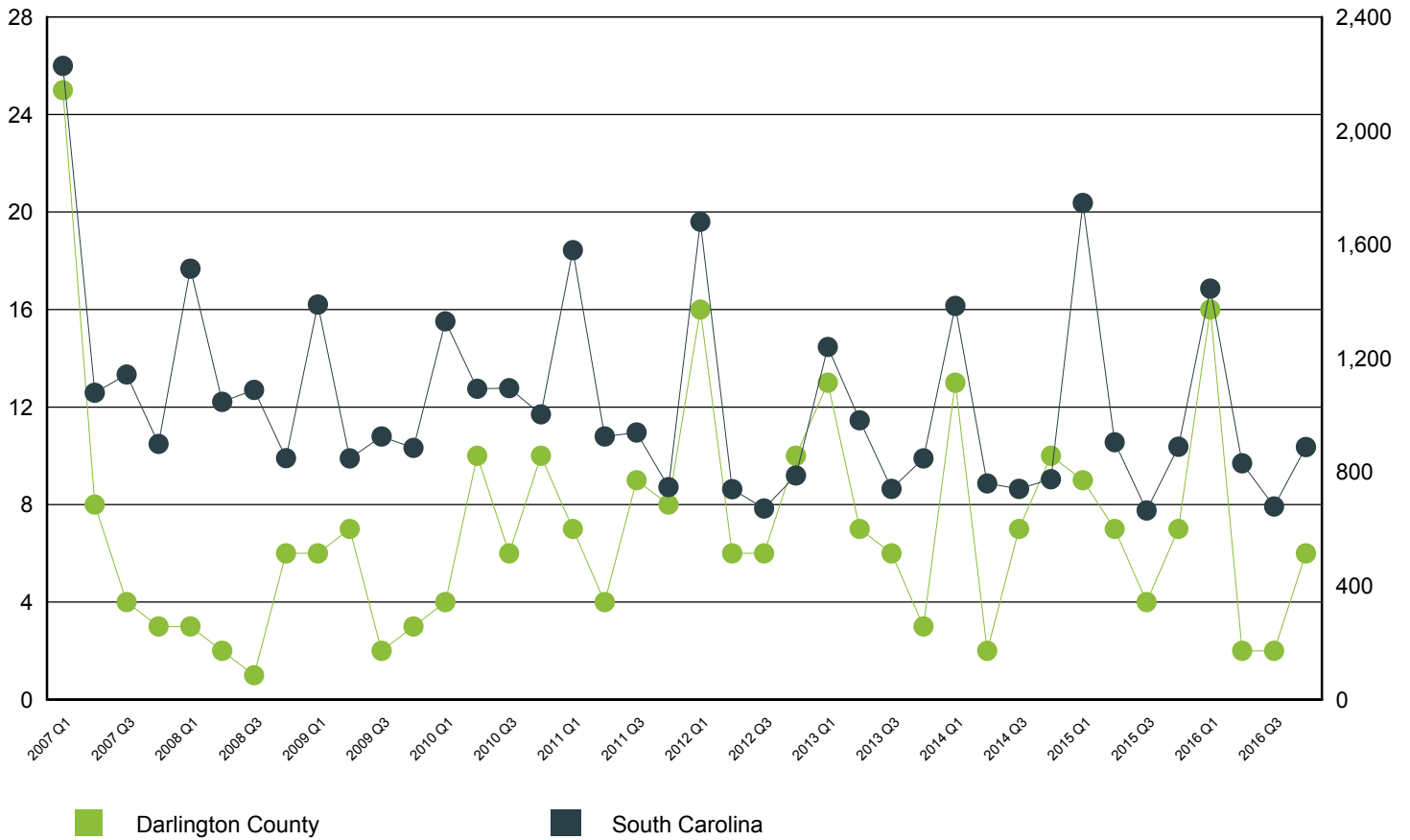


Source: S.C. Department of Employment & Workforce
 Quarterly Census of Employment and Wages (QCEW) - 2016 Q4

New Startup Firms

Darlington County

South Carolina



Quarter	Darlington County	South Carolina
2016 Q4	6	888
2016 Q3	2	679
2016 Q2	2	831
2016 Q1	16	1,445
2015 Q4	7	889
2015 Q3	4	665
2015 Q2	7	905
2015 Q1	9	1,746
2014 Q4	10	775
2014 Q3	7	741
2014 Q2	2	760
2014 Q1	13	1,384
2013 Q4	3	848
2013 Q3	6	741
2013 Q2	7	982
2013 Q1	13	1,240
2012 Q4	10	788
2012 Q3	6	672
2012 Q2	6	740
2012 Q1	16	1,680

Note: A firm is included in the count when it does not have a UI Account Number in the previous quarter and has a Setup Date that falls in the quarter displayed.

Source: S.C. Department of Employment & Workforce

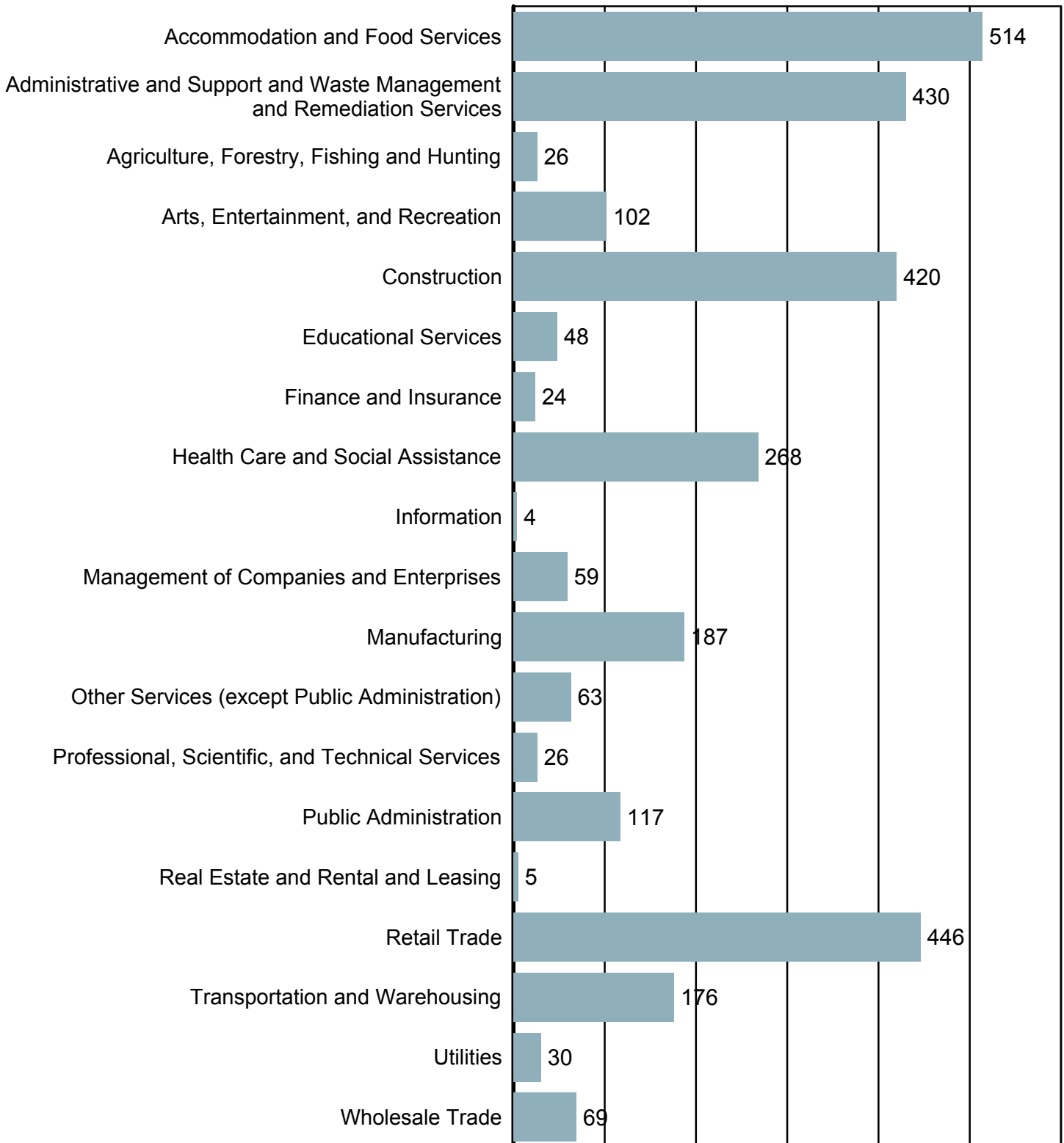
Top 20 Occupational Openings

*Darlington County
April-2016*

Occupation Name (Soccode)	Job Openings
Automotive Service Technicians and Mechanics (49-3023)	35
Speech-Language Pathologists (29-1127)	34
Heavy and Tractor-Trailer Truck Drivers (53-3032)	28
First-Line Supervisors of Mechanics, Installers, and Repairers (49-1011)	21
Automotive Body and Related Repairers (49-3021)	16
First-Line Supervisors of Office and Administrative Support Workers (43-1011)	16
Registered Nurses (29-1141)	12
First-Line Supervisors of Food Preparation and Serving Workers (35-1012)	8
Maintenance and Repair Workers, General (49-9071)	8
Physical Therapists (29-1123)	8
Physicians and Surgeons, All Other (29-1069)	8
General and Operations Managers (11-1021)	7
Landscaping and Groundskeeping Workers (37-3011)	7
Light Truck or Delivery Services Drivers (53-3033)	7
Combined Food Preparation and Serving Workers, Including Fast Food (35-3021)	6
Highway Maintenance Workers (47-4051)	6
Inspectors, Testers, Sorters, Samplers, and Weighers (51-9061)	6
Family and General Practitioners (29-1062)	5
Cashiers (41-2011)	4
Driver/Sales Workers (53-3031)	4

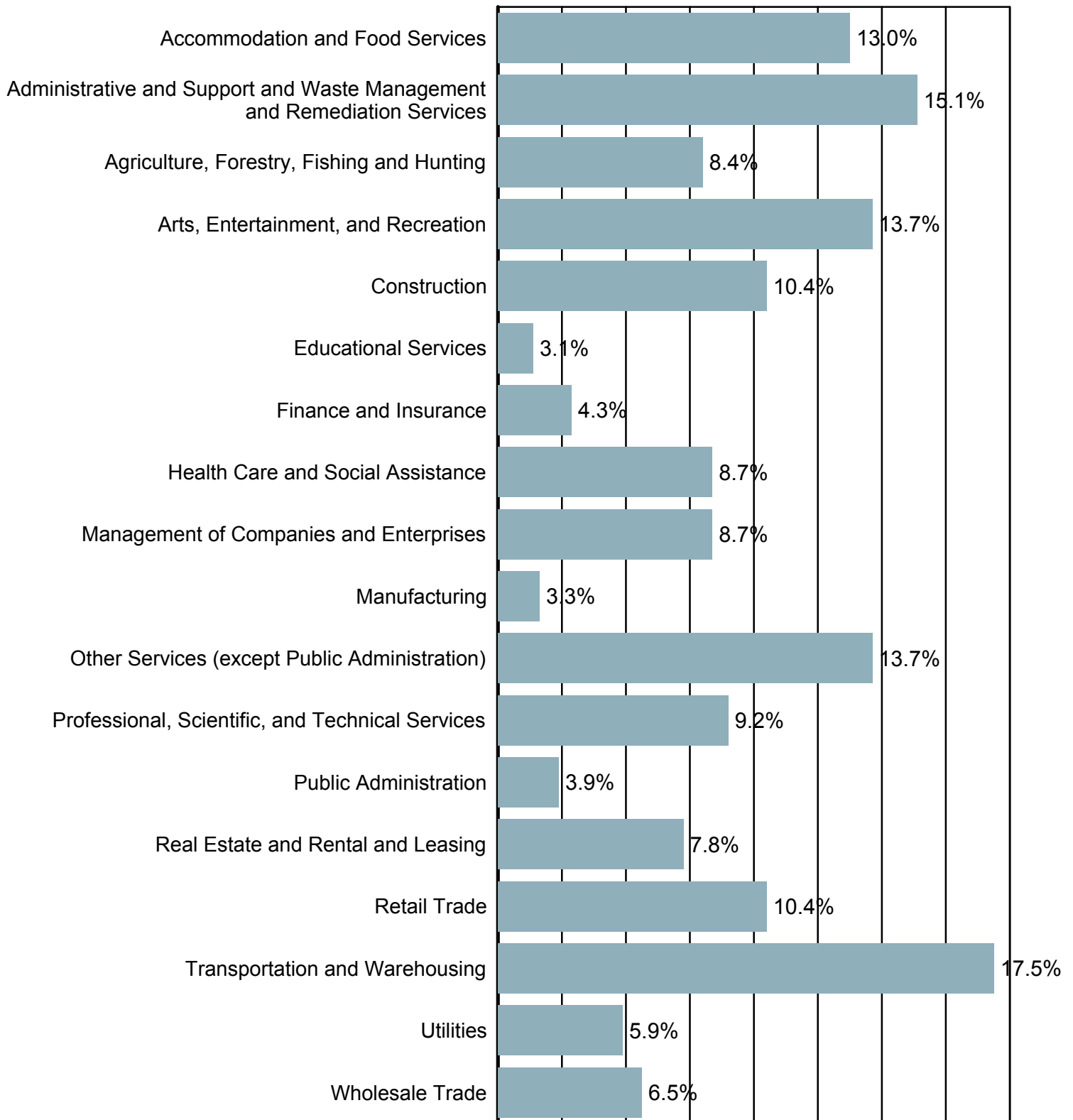
Source: S.C. Department of Employment & Workforce & The Conference Board's Help Wanted OnLine® data series

New Hires by Industry



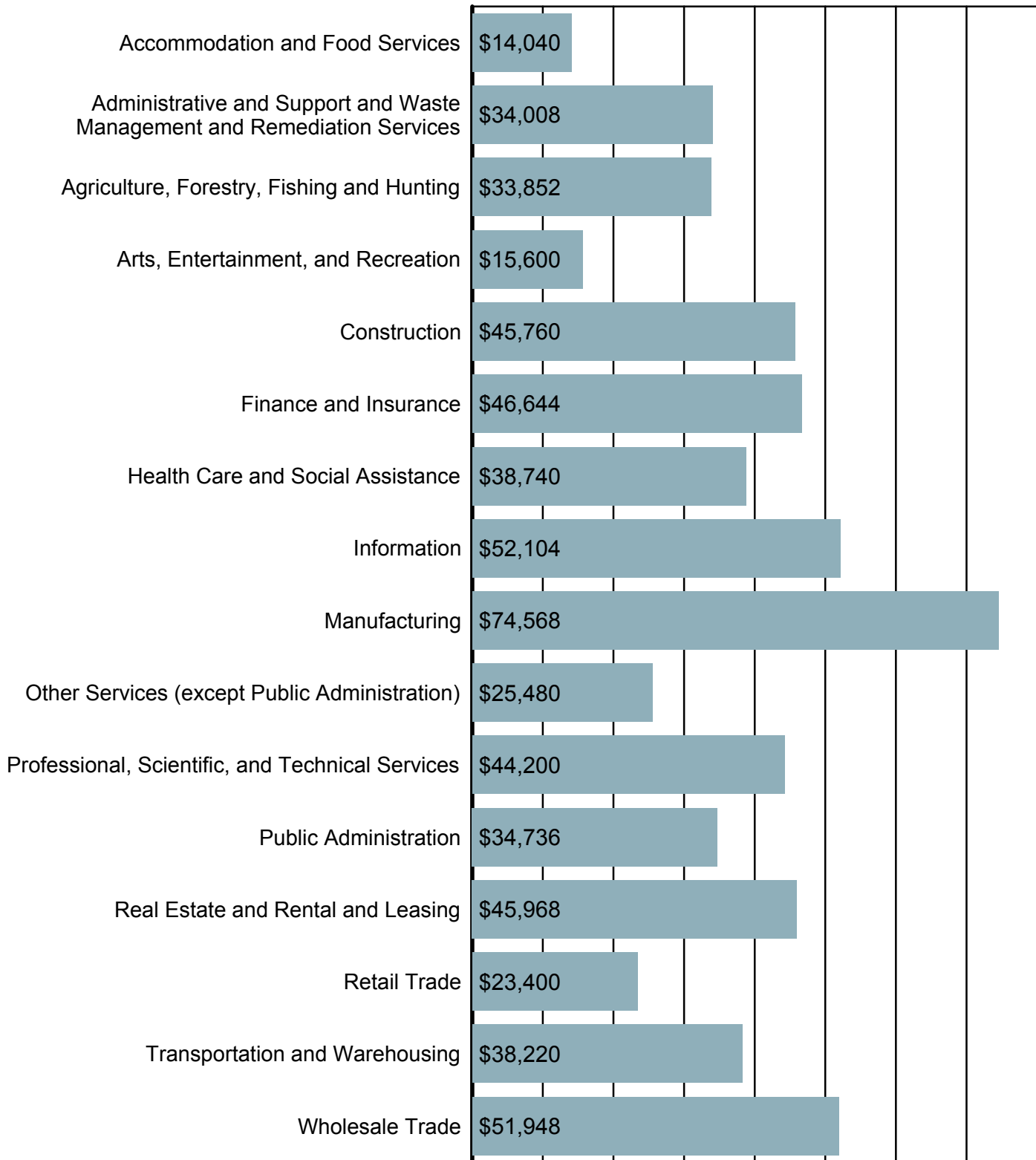
Source: U.S. Census Bureau, Local Employment Dynamics - 2016 Q2

Turnover by Industry



Source: U.S. Census Bureau, Local Employment Dynamics - 2013 Q3

Average Annual Wage by Industry



Source: S.C. Department of Employment & Workforce
 Quarterly Census of Employment and Wages (QCEW) - 2016 Q4

Age of Workers by Industry

Industry	14-18	19-21	22-24	25-34	35-44	45-54	55-64	65+
Total, All Industries	310	751	1,057	3,860	4,311	4,791	3,664	1,370
Agriculture, Forestry, Fishing and Hunting	0	0	5	24	34	42	36	14
Utilities	0	0	25	196	196	222	174	19
Construction	3	35	47	201	254	301	281	98
Manufacturing	5	32	102	539	792	1,110	743	149
Wholesale Trade	3	9	13	136	204	229	193	135
Retail Trade	92	190	173	425	384	370	289	137
Transportation and Warehousing	0	38	57	148	181	197	141	42
Information	4	2	4	12	11	18	12	4
Finance and Insurance	3	6	16	86	91	94	85	38
Real Estate and Rental and Leasing	0	0	0	12	9	20	11	5
Professional, Scientific, and Technical Servi	0	13	10	61	59	64	46	28
Management of Companies and Enterprises	0	19	29	94	81	64	36	16
Administrative and Support and Waste Manageme	5	34	70	296	305	284	210	101
Educational Services	6	65	77	323	435	490	440	140
Health Care and Social Assistance	5	78	155	616	684	649	473	138
Arts, Entertainment, and Recreation	21	22	17	47	47	59	41	13
Accommodation and Food Services	149	178	194	374	226	191	135	70
Other Services (except Public Administration)	4	11	22	89	101	119	90	75
Public Administration	3	15	37	179	219	269	226	148

Source: U.S. Census Bureau, Local Employment Dynamics - 2016 Q2

Labor Market Projections

Total Employment by Industry
(County/Metropolitan Statistical Area Data Unavailable)

Note: Projections are available by Workforce Investment Area (WIA). The data displayed is selected from the appropriate WIA.

Pee Dee Industry	2014 Estimated Employment	2024 Projected Employment	Change	Percent Change	Annual Percent
Total Employment, All Jobs	124,996	139,263	14,267	11.41	1.09
Health care and social assistance	19,070	23,028	3,958	20.76	1.90
Educational services; state, local, and private	10,264	11,848	1,584	15.43	1.45
Administrative and support and waste management and remediat	4,335	5,444	1,109	25.58	2.30
Accommodation and food services	10,348	11,433	1,085	10.49	1.00
Retail Trade	15,211	16,145	934	6.14	0.60
Transportation and Warehousing	4,962	5,767	805	16.22	1.51
Professional, scientific, and technical services	3,084	3,875	791	25.65	2.31
Construction	3,158	3,821	663	20.99	1.92
Manufacturing	18,838	19,286	448	2.38	0.24
Agriculture, forestry, fishing, and hunting	2,965	3,389	424	14.30	1.35
Finance and insurance	3,931	4,294	363	9.23	0.89
Other services (except public administration)	3,586	3,866	280	7.81	0.75
Management of companies and enterprises	1,222	1,324	102	8.35	0.80
Real estate and rental and leasing	955	1,049	94	9.84	0.94
Arts, entertainment, and recreation	950	1,027	77	8.11	0.78
Information	1,016	1,067	51	5.02	0.49
Mining, quarrying, and oil and gas extraction	122	126	4	3.28	0.32

Source: S.C. Department of Employment & Workforce - Industry Projections

Labor Market Projections

Total Employment by Occupation
(County/Metropolitan Statistical Area Data Unavailable)

Note: Projections are available by Workforce Investment Area (WIA). The data displayed is selected from the appropriate WIA.

Pee Dee Occupation	2014 Estimated Employment	2024 Projected Employment	Openings (Replace)	Openings (Growth)	Annual Openings
Total, all occupations	124,996	139,263	2,986	1,498	4,484
Management occupations	6,648	7,611	145	97	242
Business and financial operations occupations	3,823	4,342	86	52	138
Computer and mathematical occupations	1,248	1,500	18	25	43
Architecture and engineering occupations	1,352	1,456	37	11	48
Life, physical, and social science occupations	512	542	16	4	20
Community and social service occupations	2,313	2,596	50	28	78
Legal occupations	650	760	12	11	23
Education, training, and library occupations	7,677	8,999	171	132	303
Arts, design, entertainment, sports, and media occupations	755	808	19	6	25
Healthcare practitioners and technical occupations	9,285	10,675	202	139	341
Healthcare support occupations	4,955	6,282	110	134	244
Protective service occupations	2,682	2,876	70	20	90
Food preparation and serving related occupations	10,081	11,127	352	117	469
Building and grounds cleaning and maintenance occupations	4,027	4,584	82	56	138
Personal care and service occupations	2,740	3,281	55	54	109
Sales and related occupations	13,838	14,985	438	115	553
Office and administrative support occupations	16,892	18,131	341	144	485
Farming, fishing, and forestry occupations	2,143	2,389	55	25	80
Construction and extraction occupations	3,693	4,260	56	57	113
Installation, maintenance, and repair occupations	5,652	6,294	132	66	198
Production occupations	13,832	14,414	299	82	381
Transportation and material moving occupations	10,198	11,351	242	122	364

Source: S.C. Department of Employment & Workforce - Occupational Projections

Labor Market Projections

Growing Occupations
(County/Metropolitan Statistical Area Data Unavailable)

Note: Projections are available by Workforce Investment Area (WIA). The data displayed is selected from the appropriate WIA.

Occupation	2014		2024		Replace	Growth	Total	Average Salary
	Estimated Employment	Projected Employment	Percent Change	Percent Change				
Home health aides	1,357	2,035	50	31	68	99	\$ 19,151	
Occupational therapy assistants	48	68	42	1	2	3	\$ 60,683	
Veterinary technologists and technicians	70	97	39	1	3	4	\$ 23,960	
Statisticians	13	18	38	0	0	0	\$ 58,877	
Assemblers and fabricators, all other	42	57	36	1	2	3	\$ 20,046	
Personal care aides	789	1,063	35	6	27	33	\$ 18,837	
Web developers	30	40	33	0	1	1	\$ 39,969	
Computer numerically controlled machine tool programmers, me	15	20	33	0	0	0	\$ 43,794	
Nurse practitioners	126	166	32	3	4	7	\$ 98,850	
Insurance claims and policy processing clerks	36	47	31	1	1	2	\$ 32,830	
Speech-language pathologists	125	163	30	3	4	7	\$ 76,776	
Self-enrichment education teachers	143	186	30	3	4	7	\$ 45,184	
Physical therapist assistants	87	113	30	2	3	5	\$ 57,587	
Physical therapists	146	189	29	4	4	8	\$ 88,156	
Software developers, applications	131	169	29	2	4	6	\$ 64,574	
Diagnostic medical sonographers	66	85	29	1	2	3	\$ 50,431	
Veterinarians	36	46	28	1	1	2	\$ 85,903	
Health technologists and technicians, all other	62	79	27	1	2	3	\$ 37,462	
Preschool teachers, except special education	456	579	27	13	12	25	\$ 20,809	
Occupational therapists	124	156	26	2	3	5	\$ 75,260	

Occupations are sorted by highest estimated percentage growth from estimate year to projection year.

Source: S.C. Department of Employment & Workforce - Occupational Projections

Labor Market Projections

Declining Occupations

(County/Metropolitan Statistical Area Data Unavailable)

Note: Projections are available by Workforce Investment Area (WIA). The data displayed is selected from the appropriate WIA.

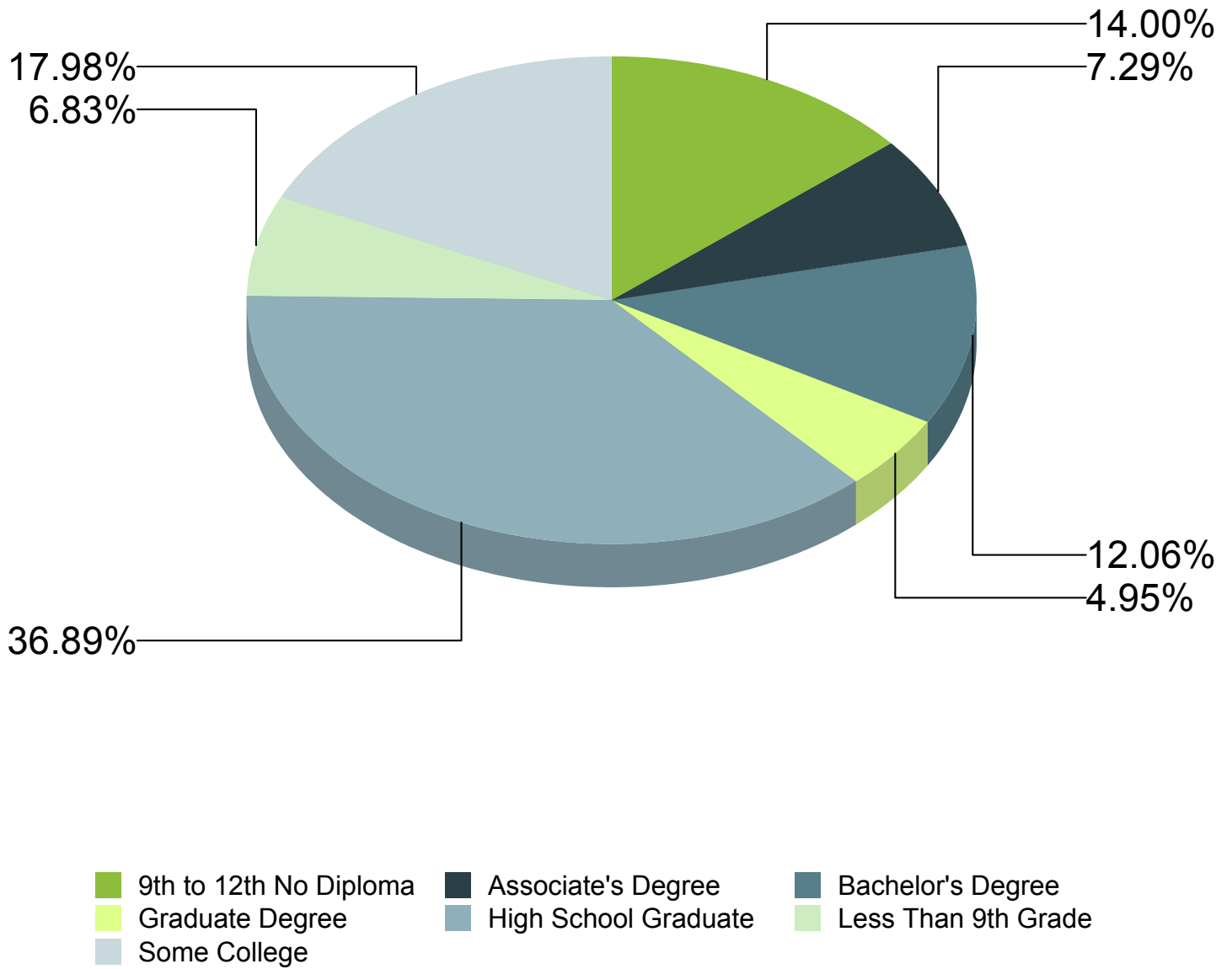
Occupation	2014	2024	Percent Change	Replace	Growth	Total	Average Salary
	Estimated Employment	Projected Employment					
Respiratory therapy technicians	17	13	-24	0	0	0	\$ 57,069
Postal service mail sorters, processors, and processing mach	82	63	-23	1	0	1	\$ 47,118
Fallers	18	14	-22	0	0	0	\$ 32,585
Postmasters and mail superintendents	29	24	-17	1	0	1	\$ 67,287
Medical transcriptionists	56	47	-16	1	0	1	\$ 35,635
Advertising and promotions managers	19	16	-16	1	0	1	\$ 70,744
Postal service mail carriers	298	256	-14	6	0	6	\$ 50,053
Postal service clerks	69	60	-13	1	0	1	\$ 48,433
Mail clerks and mail machine operators, except postal servic	62	54	-13	1	0	1	\$ 24,248
Cutting, punching, and press machine setters, operators, and	169	148	-12	2	0	2	\$ 35,896
Biological technicians	17	15	-12	0	0	0	\$ 31,764
Editors	17	15	-12	1	0	1	\$ 49,301
Word processors and typists	128	114	-11	0	0	0	\$ 29,279
Cooks, fast food	1,055	940	-11	28	0	28	\$ 17,418
Extruding and drawing machine setters, operators, and tender	240	214	-11	6	0	6	\$ 42,763
Lathe and turning machine tool setters, operators, and tende	190	170	-11	5	0	5	\$ 33,196
Computer operators	29	26	-10	0	0	0	\$ 39,515
Tool and die makers	111	103	-7	0	0	0	\$ 45,853
Furnace, kiln, oven, drier, and kettle operators and tenders	29	27	-7	1	0	1	\$ 32,035
Electrical and electronics engineering technicians	29	27	-7	1	0	1	\$ 58,354

Occupations are sorted by highest estimated percentage decline from estimate year to projection year.

Source: S.C. Department of Employment & Workforce - Occupational Projections

Educational Attainment

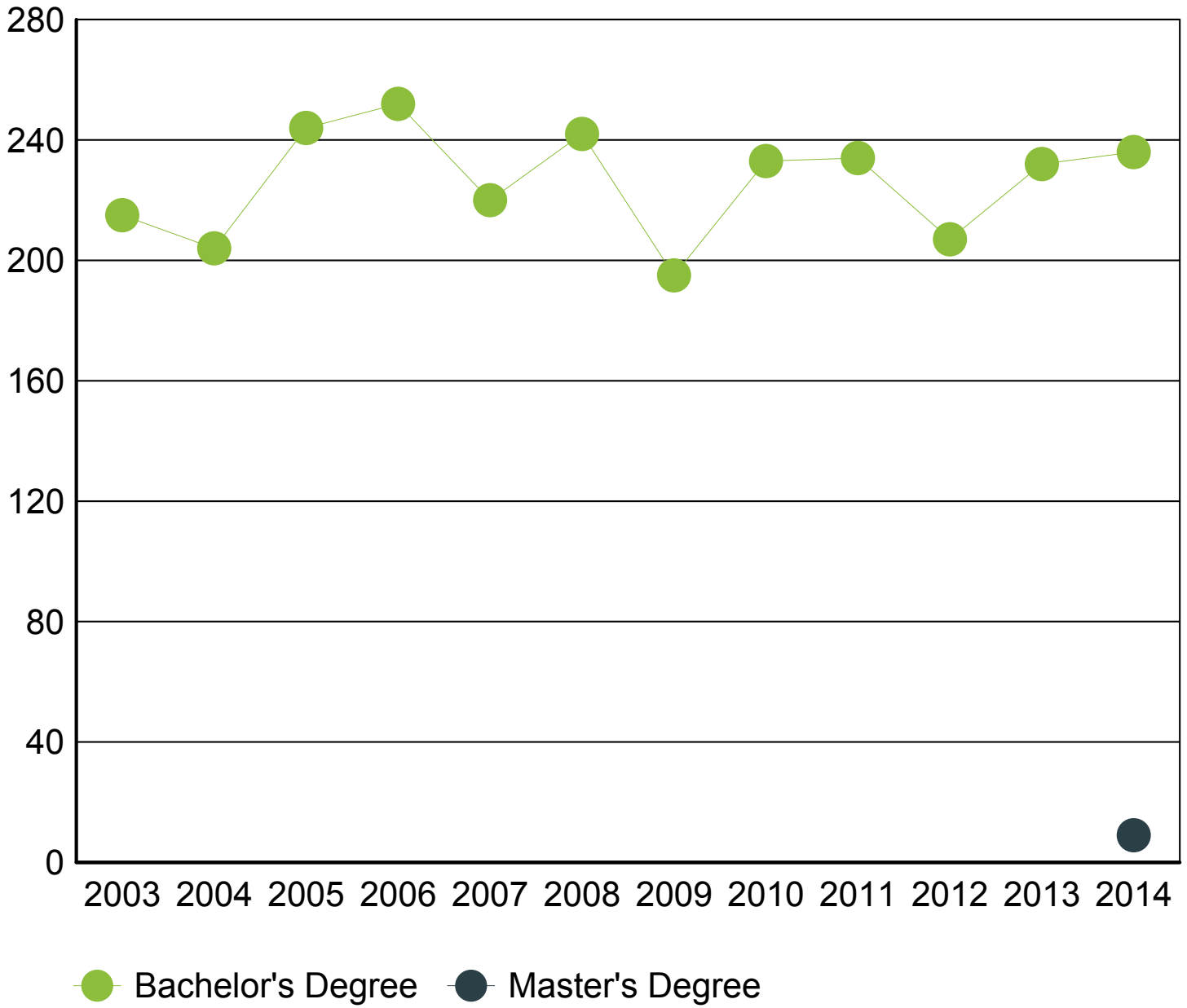
(Population 25 Years and Older)



Source: U.S. Census Bureau, American Community Survey - 2013 5-Year Estimates

Graduate Trends

(Based On Graduates From Area Schools)



Source: Institute of Education Sciences (IES), Integrated Postsecondary Education Data System

Educational Institutions

Coker College
300 E College Ave
Hartsville, SC 29550
843.383.8000
<http://www.coker.edu>
2014 Degrees Awarded: 245

Source: Institute of Education Sciences (IES), Integrated Postsecondary Education Data System