

COMMUNITY PROFILE

Waccamaw

Workforce Development Area



S.C. Department of Employment & Workforce

Business Intelligence Department

1550 Gadsden Street, PO Box 995

Columbia, SC 29202

803.737.2660

www.SCWorkforceInfo.com

Updated: 04/20/2018



Table Of Contents

1. Economic Data

Annual Unemployment Rates.....	1
Monthly Unemployment Rates.....	2
Area Job Openings.....	3
Unemployment Insurance.....	4
Demographic Data.....	4
Industry Data.....	5
Occupation Data.....	6
Retail Sales.....	7

2. Demographic Data

Population.....	8
Age.....	8
Race.....	9
Gender.....	9
Change.....	10
Commuting Patterns.....	11
Residents Commuting To.....	12
Workers Commuting From.....	12
Employer Data.....	13
Size of Establishments.....	13
Employment by Size of Establishment.....	13
20 Largest Employers	14

3. Industry Data

Employment by Industry.....	15
New Startup Firms.....	16
Top Occupational Openings.....	17
New Hires by Industry.....	18
Turnover by Industry.....	19
Average Annual Wage by Industry.....	20
Age of Workers by Industry.....	21
Projections by Industry.....	22

4. Occupation Data

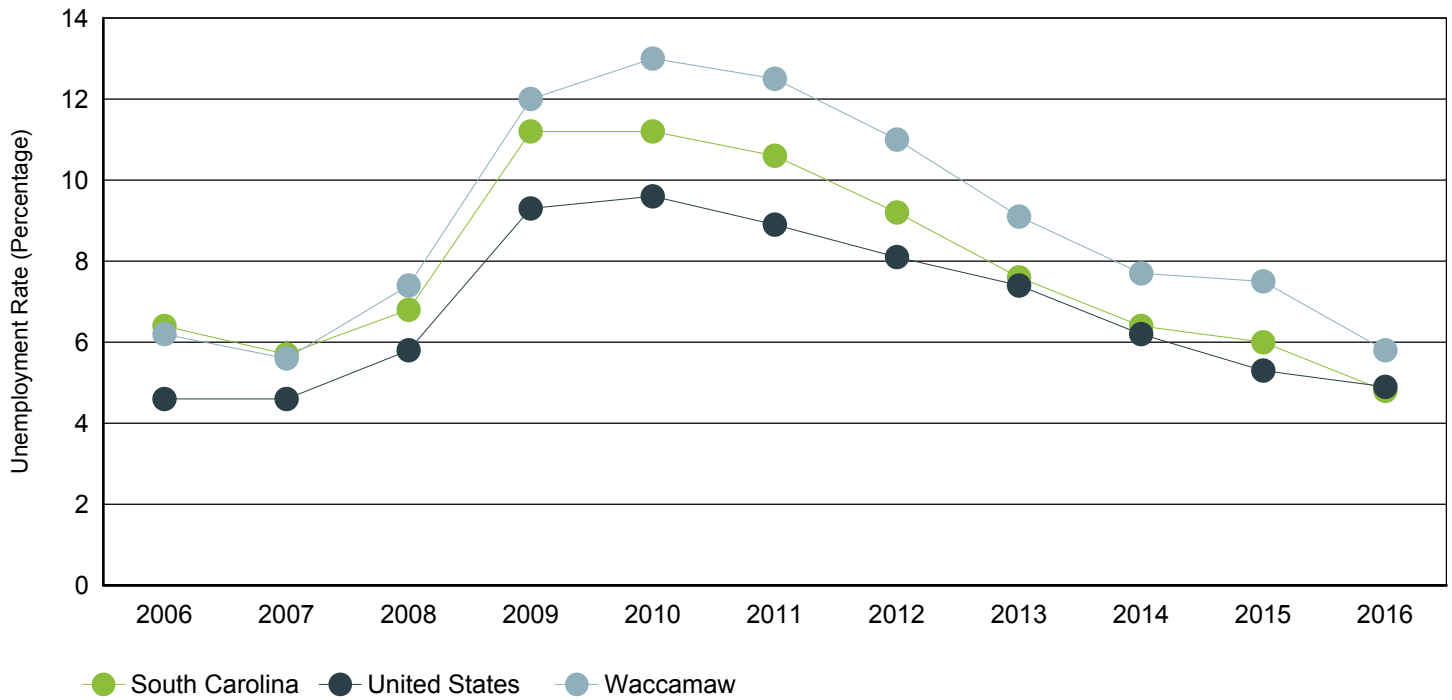
Projections by Occupation.....	23
Growing Occupations.....	24
Declining Occupations.....	25

5. Education Data

Educational Attainment.....	26
Graduate Trends.....	27
Educational Institutions.....	28

Annual Unemployment Rate (Unadjusted)

Trends

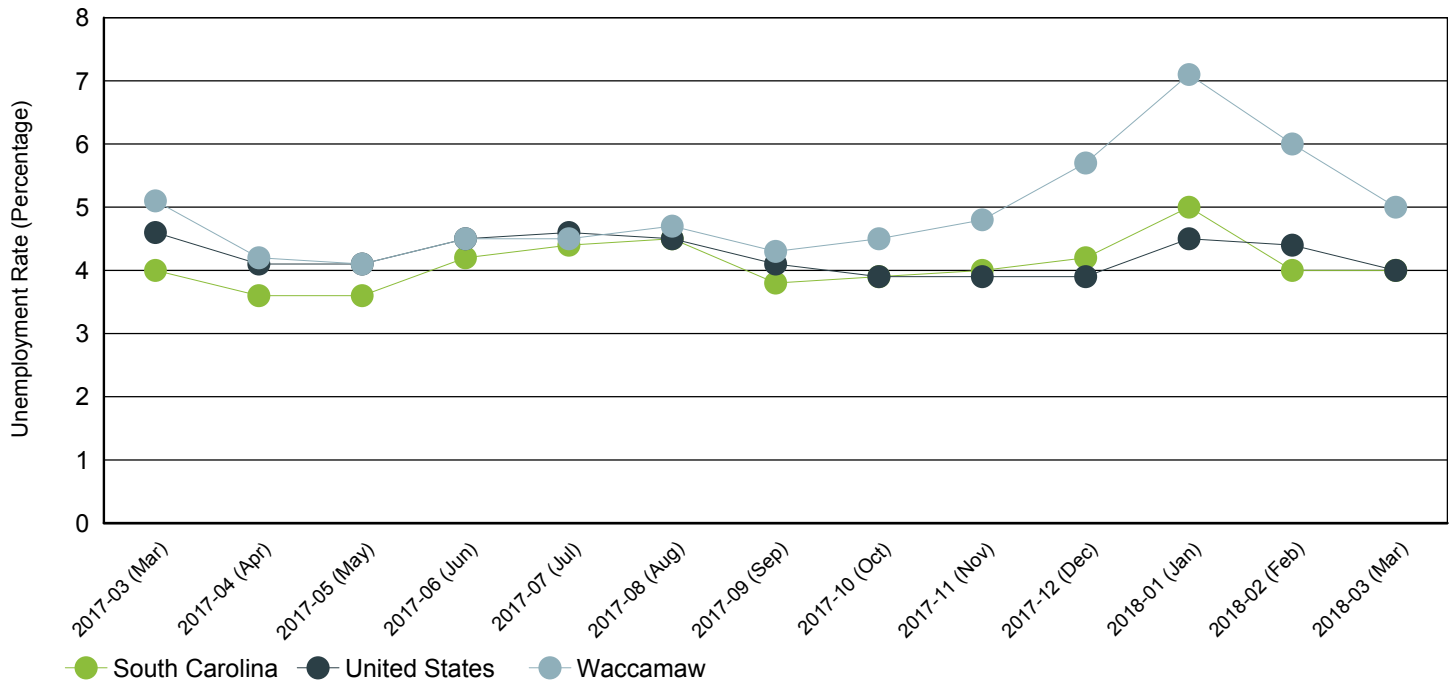


Year	Waccamaw			South Carolina			United States		
	Employment	Unemp	Rate	Employment	Unemp	Rate	Employment	Unemp	Rate
2016	166,916	10,369	5.8%	2,186,740	111,067	4.8%	151,436,000	7,751,000	4.9%
2015	162,353	13,115	7.5%	2,134,637	135,746	6.0%	148,834,000	8,296,000	5.3%
2014	158,545	13,267	7.7%	2,081,511	143,151	6.4%	146,305,000	9,617,000	6.2%
2013	154,594	15,532	9.1%	2,026,666	167,647	7.6%	143,929,000	11,460,000	7.4%
2012	151,127	18,661	11.0%	1,985,618	201,260	9.2%	142,469,000	12,506,000	8.1%
2011	149,826	21,475	12.5%	1,945,900	229,623	10.6%	139,869,000	13,747,000	8.9%
2010	148,178	22,163	13.0%	1,915,045	240,623	11.2%	139,064,000	14,825,000	9.6%
2009	155,236	21,127	12.0%	1,910,670	242,075	11.2%	139,877,000	14,265,000	9.3%
2008	163,422	13,098	7.4%	1,996,409	145,823	6.8%	145,362,000	8,924,000	5.8%
2007	164,965	9,700	5.6%	2,005,686	120,205	5.7%	146,047,000	7,078,000	4.6%
2006	162,524	10,713	6.2%	1,973,337	135,760	6.4%	144,427,000	7,001,000	4.6%

Source: S.C. Department of Employment & Workforce

Monthly Unemployment Rate (Unadjusted)

Past 13 Months



Period	Waccamaw	South Carolina	United States
Mar 2018	5.0%	4.0%	4.0%
Feb 2018	6.0%	4.0%	4.4%
Jan 2018	7.1%	5.0%	4.5%
Dec 2017	5.7%	4.2%	3.9%
Nov 2017	4.8%	4.0%	3.9%
Oct 2017	4.5%	3.9%	3.9%
Sep 2017	4.3%	3.8%	4.1%
Aug 2017	4.7%	4.5%	4.5%
Jul 2017	4.5%	4.4%	4.6%
Jun 2017	4.5%	4.2%	4.5%
May 2017	4.1%	3.6%	4.1%
Apr 2017	4.2%	3.6%	4.1%
Mar 2017	5.1%	4.0%	4.6%

Source: S.C. Department of Employment & Workforce

Area Job Openings

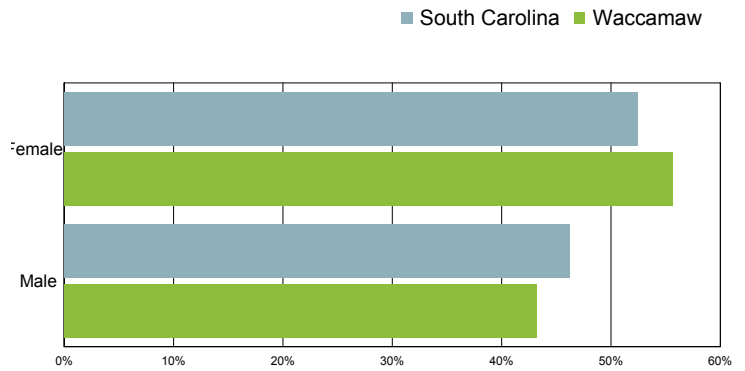
Period	Waccamaw				South Carolina			
	Employed	Unemployed	Unemp. Rate	Job Openings	Employed	Unemployed	Unemp. Rate	Job Openings
Mar-18	170,937	9,449	5.0%	4,827	2,225,456	102,076	4.0%	59,107
Feb-18	167,925	11,340	6.0%	4,044	2,223,397	101,415	4.0%	57,596
Jan-18	165,030	12,518	7.1%	3,612	2,221,051	100,182	4.3%	51,746
Dec-17	165,800	9,946	5.7%	3,260	2,220,845	97,879	4.2%	56,028
Nov-17	167,572	8,401	4.8%	3,552	2,232,646	92,726	4.0%	60,228
Oct-17	170,422	8,075	4.5%	3,881	2,235,030	91,092	3.9%	57,940
Sep-17	173,142	7,736	4.3%	3,960	2,232,770	91,342	3.9%	58,456
Aug-17	176,979	8,804	4.7%	4,333	2,225,885	93,069	4.0%	61,865
Jul-17	180,894	8,595	4.5%	4,552	2,227,818	91,607	3.9%	62,395
Jun-17	180,406	8,562	4.5%	4,986	2,230,571	91,627	3.9%	66,498
May-17	177,065	7,580	4.1%	5,363	2,231,971	96,526	4.1%	65,966
Apr-17	174,774	7,752	4.2%	3,914	2,232,681	101,458	4.3%	63,951
Mar-17	168,133	8,951	5.1%	5,306	2,229,182	103,639	4.4%	59,863

Source: S.C. Department of Employment & Workforce & The Conference Board's Help Wanted OnLine® data series
South Carolina Data is Seasonally Adjusted

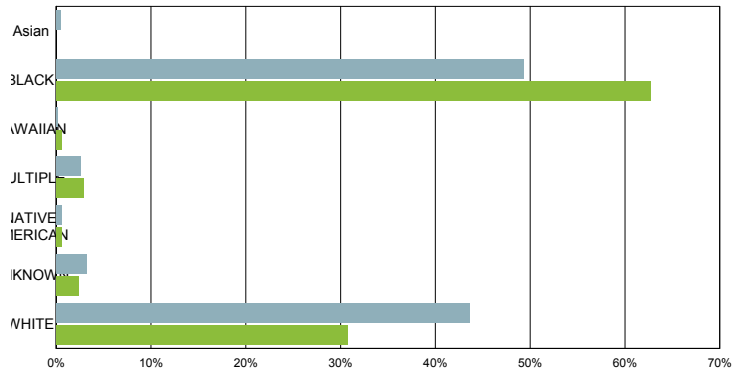
Characteristics of Unemployment Insurance Claimants

March 2018

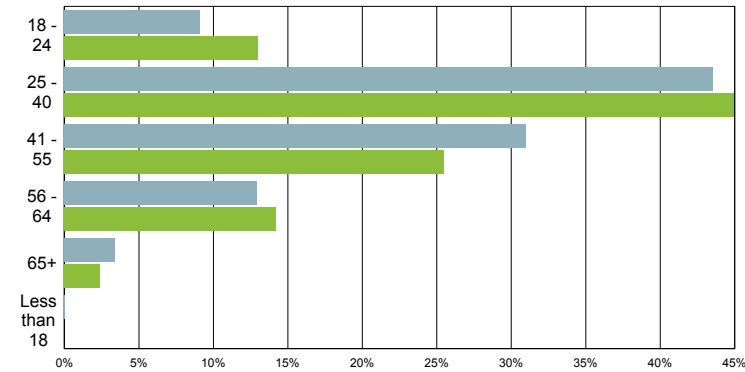
Gender	Waccamaw	South Carolina
Female	94	3,081
Male	73	2,717
O	2	78



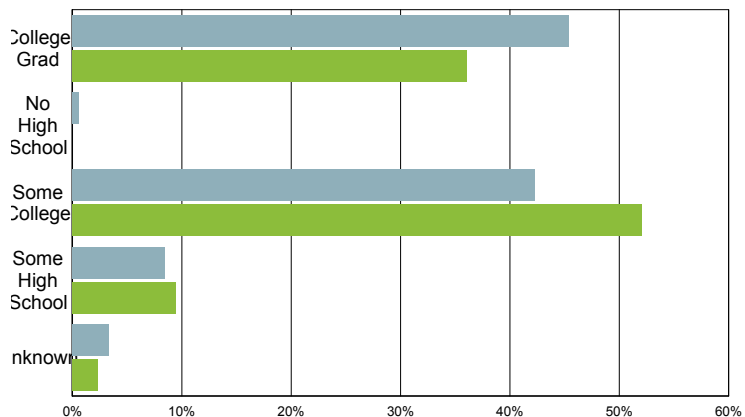
Race	Waccamaw	South Carolina
Asian	0	27
BLACK	106	2,896
HAWAIIAN	1	10
MULTIPLE	5	152
NATIVE AMERICAN	1	35
UNKNOWN	4	190
WHITE	52	2,566



Age Group	Waccamaw	South Carolina
18 - 24	22	534
25 - 40	76	2,558
41 - 55	43	1,821
56 - 64	24	761
65+	4	200
Less than 18	0	2



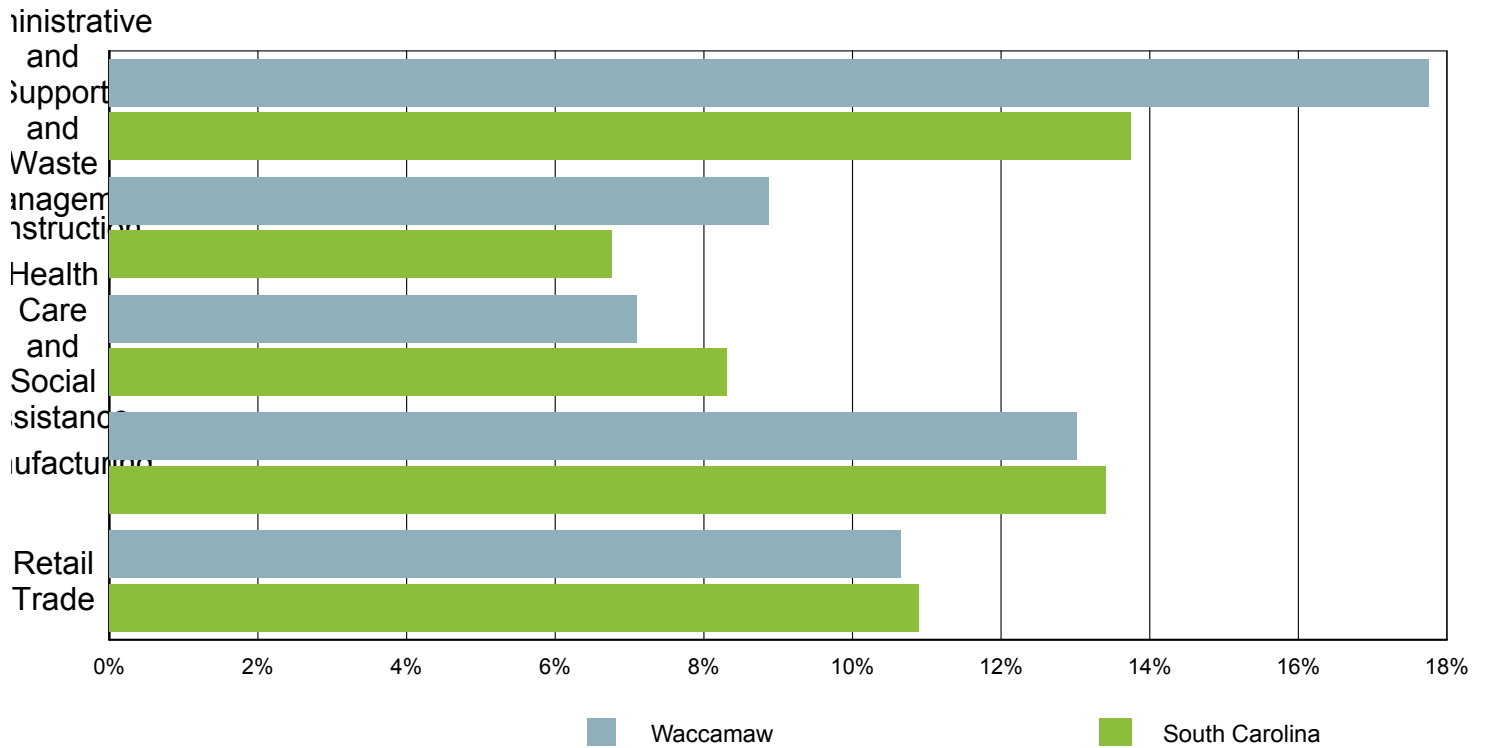
Education	Waccamaw	South Carolina
College Grad	61	2,665
Some College	88	2,483
Some High School	16	498
No High School	0	35
Unknown	4	195



Source: S.C. Department of Employment & Workforce

Characteristics of Unemployment Insurance Claims by Industry

Industry Groups With Largest Number of Claims
March 2018



Industry	Waccamaw	South Carolina
Agriculture, Forestry, Fishing and Hunting	3	37
Construction	15	397
Manufacturing	22	788
Wholesale Trade	8	256
Retail Trade	18	640
Transportation and Warehousing	5	186
Finance and Insurance	6	193
Professional, Scientific, and Technical Services	9	342
Administrative and Support and Waste Management and Remediation Services	30	808
Educational Services	1	81
Health Care and Social Assistance	12	488
Arts, Entertainment, and Recreation	1	22
Accommodation and Food Services	5	431
Other Services (except Public Administration)	3	115
Public Administration	5	93
Unknown	26	792

Source: S.C. Department of Employment & Workforce

Characteristics of Unemployment Insurance Claims by Occupation

Occupation Groups With Largest Number of Claims
March 2018



South Carolina

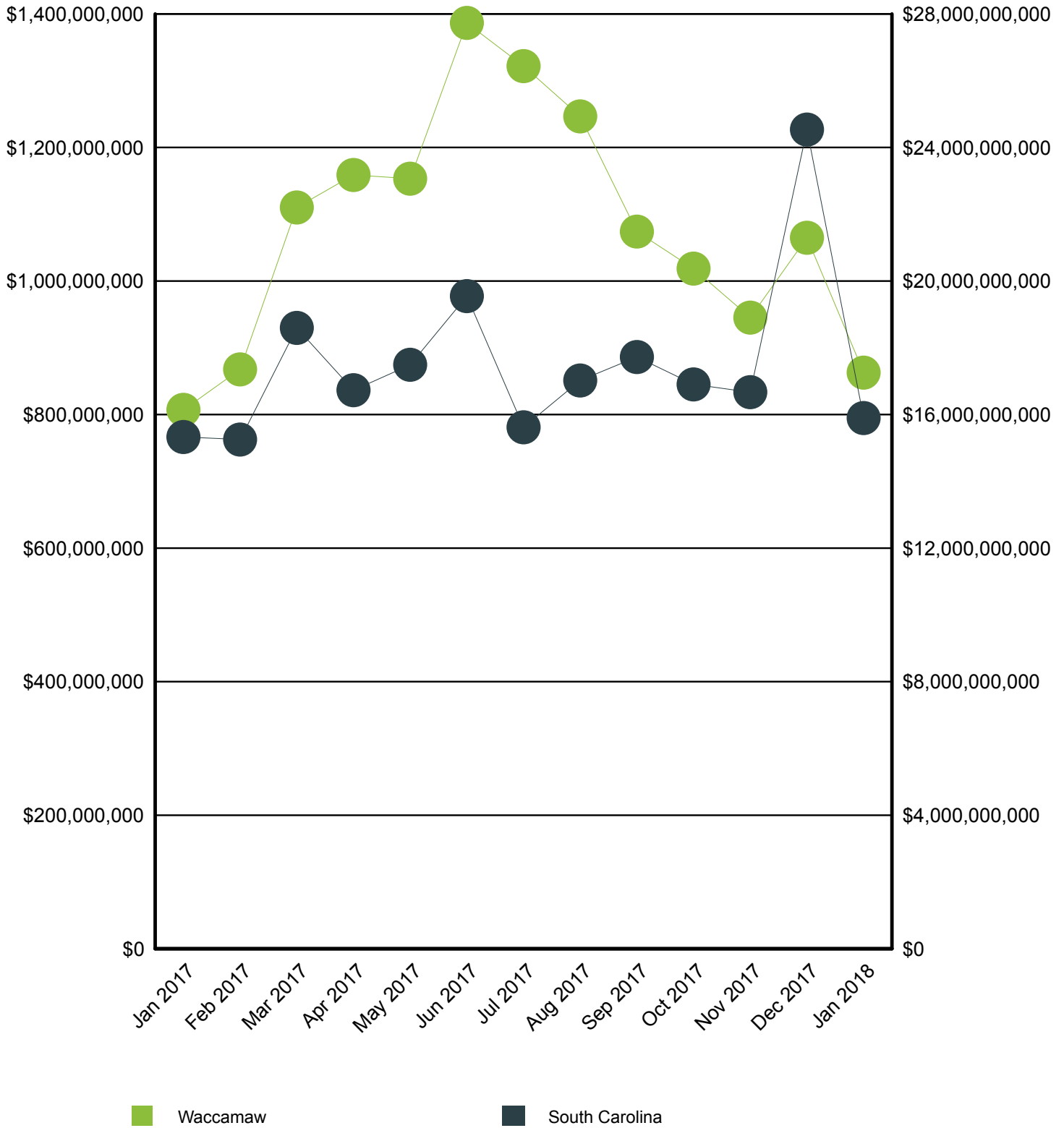
Occupation	Waccamaw	South Carolina
Unknown	169	5,876

Source: S.C. Department of Employment & Workforce

Retail Sales

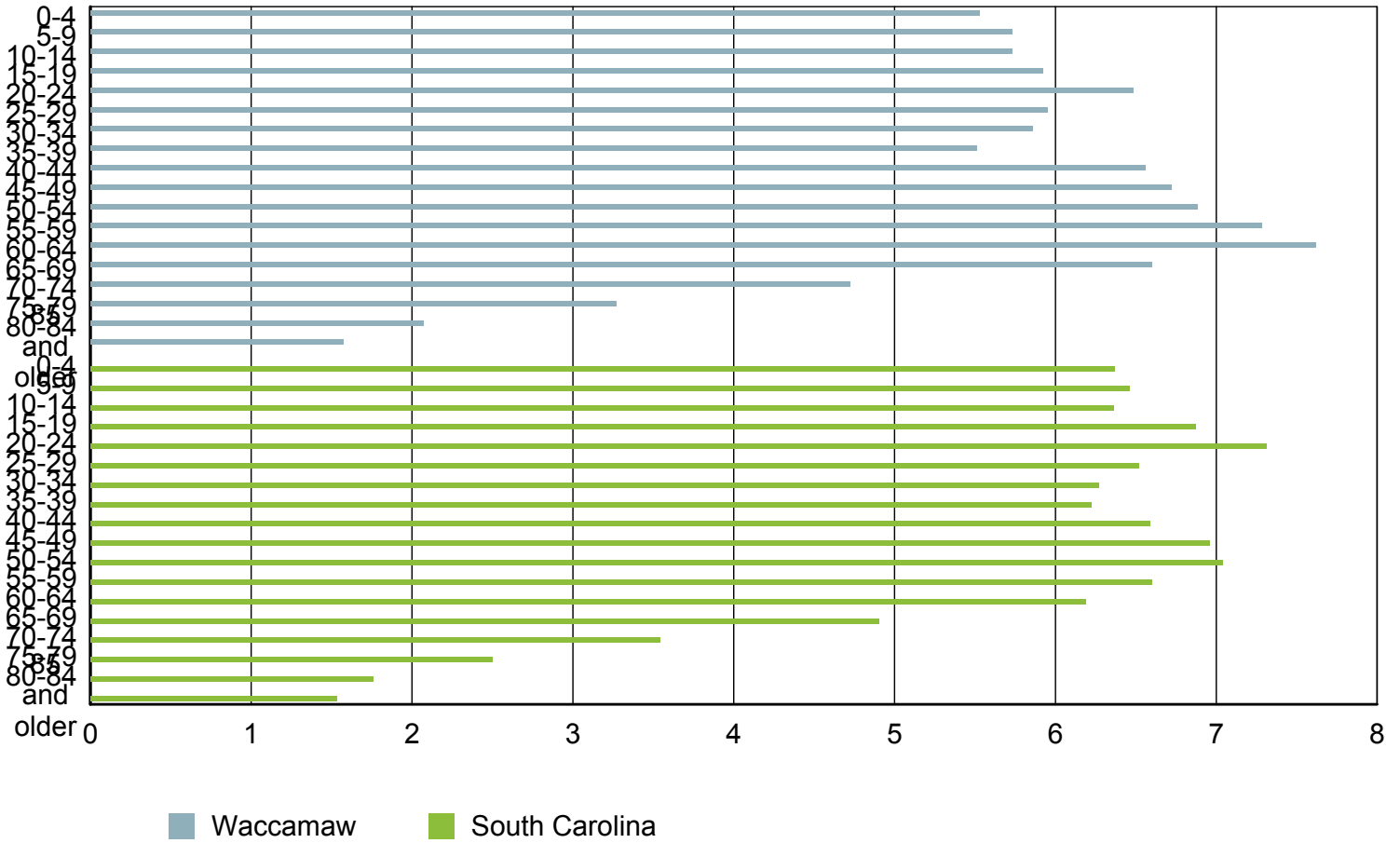
Waccamaw

South Carolina



Source: S.C. Department of Revenue

Population by Age



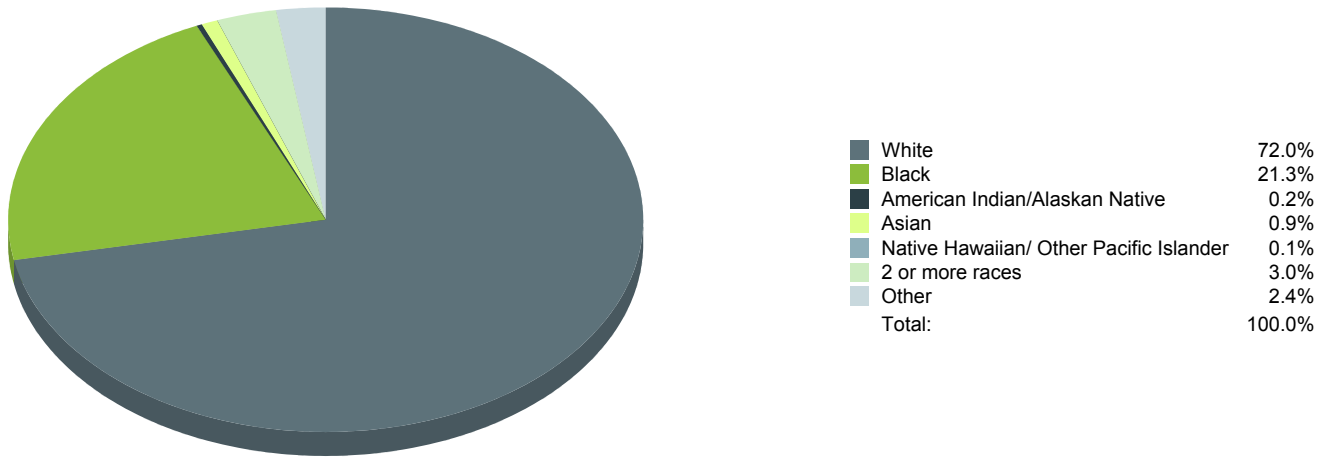
Age Range	Waccamaw	South Carolina	United States
0-4	20,506	298,242	20,052,112
5-9	21,259	302,111	20,409,060
10-14	21,241	297,443	20,672,609
15-19	21,952	321,540	21,715,074
20-24	24,032	342,237	22,099,887
25-29	22,052	305,167	21,243,365
30-34	21,747	293,464	20,467,912
35-39	20,453	291,183	19,876,161
40-44	24,340	308,158	20,998,001
45-49	24,928	325,660	22,109,946
50-54	25,529	329,431	22,396,322
55-59	27,010	309,061	20,165,892
60-64	28,248	289,690	17,479,211
65-69	24,491	229,251	13,189,508
70-74	17,512	165,797	9,767,522
75-79	12,118	117,187	7,438,750
80-84	7,666	82,223	5,781,697
85 and older	5,828	71,757	5,673,565

Source: U.S. Census Bureau, American Community Survey

Population by Race

Race	Waccamaw	%	South Carolina	%	United States	%
White	271,240	73.1%	3,144,146	66.0%	230,592,579	72.0%
Black	80,305	21.7%	1,298,534	27.3%	39,167,010	12.2%
American Indian/Alaskan Native	876	0.2%	14,732	0.3%	2,540,309	0.8%
Asian	3,522	1.0%	61,097	1.3%	15,231,962	4.8%
Native Hawaiian/ Other Pacific Islander	210	0.1%	2,128	0.0%	526,347	0.2%
2 or more races	11,408	3.1%	169,670	3.6%	17,464,666	5.5%
Other	9,055	2.4%	74,130	1.6%	14,746,054	4.6%

Source: U.S. Census Bureau, American Community Survey



Population by Gender

Gender	Waccamaw	South Carolina	United States
Male	180,422	2,276,305	153,247,412
Female	190,490	2,403,297	158,289,182

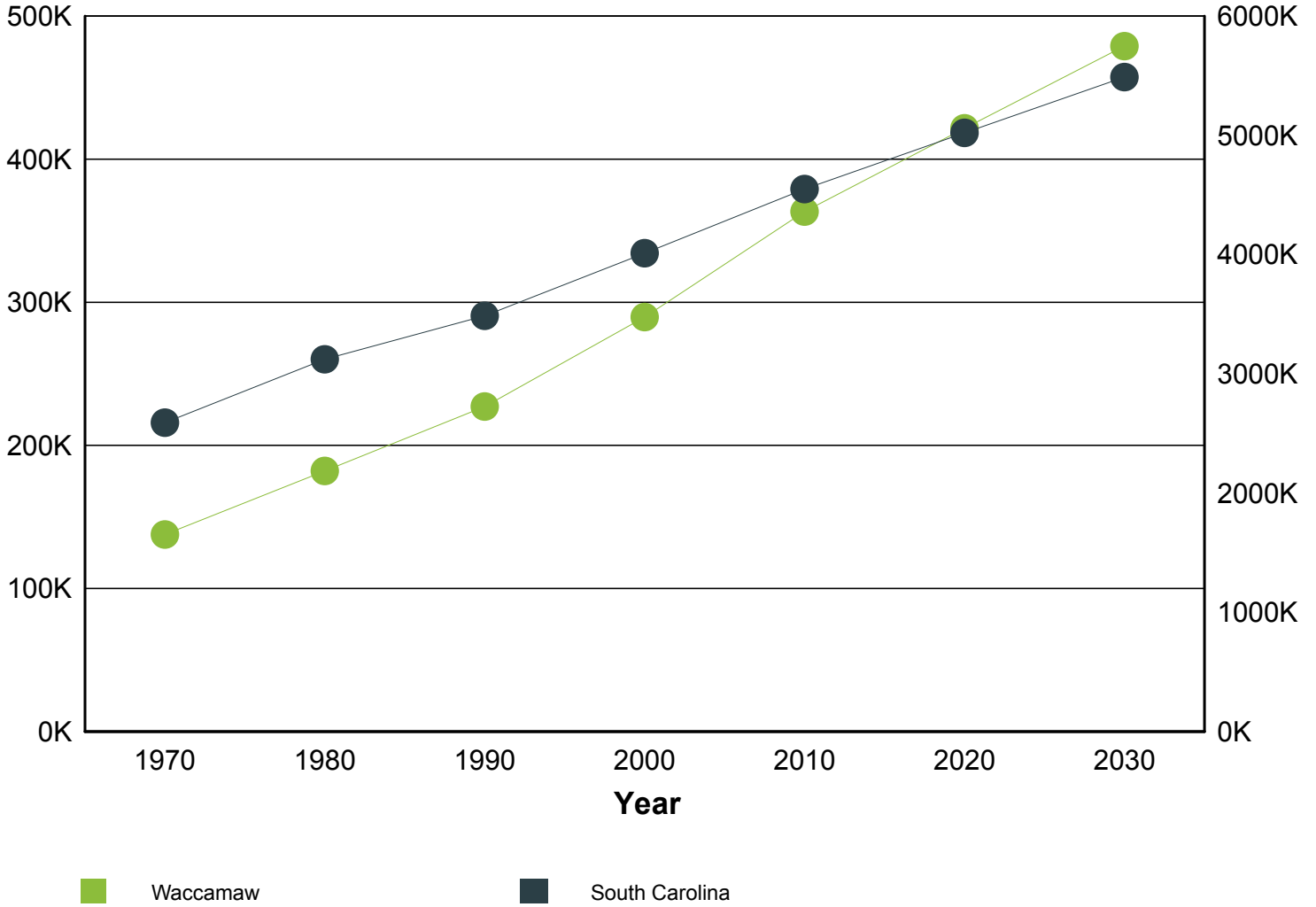
Source: U.S. Census Bureau, American Community Survey

Population Change

Historical and Projected

Waccamaw

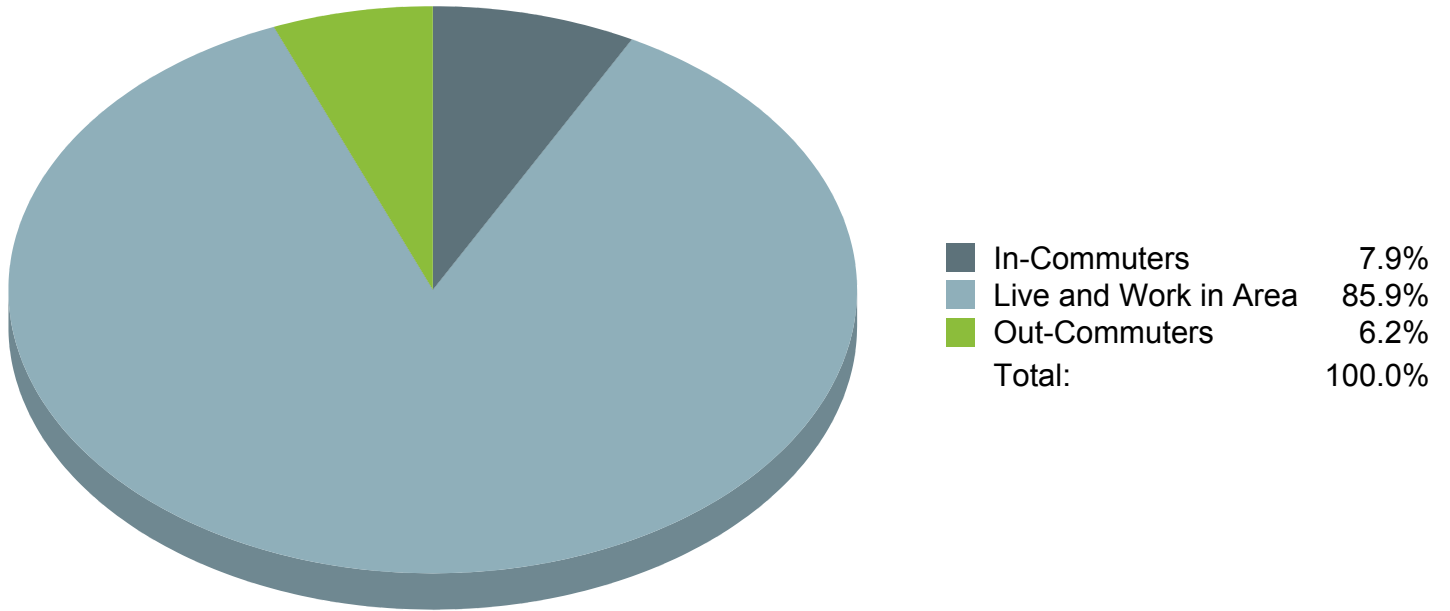
South Carolina



Year	Waccamaw	South Carolina
1970	137,735	2,590,713
1980	182,106	3,121,820
1990	227,170	3,486,310
2000	289,643	4,012,012
2010	363,340	4,549,150
2020	421,560	5,020,400
2030	479,000	5,488,460

Source: U.S. Census Bureau

Commuting Patterns



Commuting Patterns	Workers
Live and Work in Area	142,231
In-Commuters	13,013
Out-Commuters	10,340

Source: U.S. Census Bureau - 2010

Top 10 Places Residents Are Commuting To

Area	Workers
Florence County, SC	2,454
Marion County, SC	974
BRUNSWICK COUNTY, NC	874
Charleston County, SC	799
Berkeley County, SC	510
COLUMBUS COUNTY, NC	470
Clarendon County, SC	412
Richland County, SC	312
MECKLENBURG COUNTY, NC	278
NEW HANOVER COUNTY, NC	226

Source: U.S. Census Bureau - 2010

Top 10 Places Residents Are Commuting From

Area	Workers
Florence County, SC	2,542
COLUMBUS COUNTY, NC	2,315
BRUNSWICK COUNTY, NC	2,285
Marion County, SC	1,886
Charleston County, SC	384
Berkeley County, SC	364
Clarendon County, SC	327
ROBESON COUNTY, NC	201
Dillon County, SC	194
Sumter County, SC	162

Source: U.S. Census Bureau - 2010

Employers by Size of Establishment

Employees	Waccamaw	South Carolina
0 to 4	6,068	75,649
5 to 9	1,934	20,263
10 to 19	1,483	14,977
20 to 49	1,061	11,547
50 to 99	394	4,562
100 to 249	211	2,731
250 to 499	36	866
500 to 999	10	387
1000 +	8	293

Source: S.C. Department of Employment & Workforce - 2017 Q3

- Indicates that the requested data is suppressed

Employment by Size of Establishment

Employees	Waccamaw	South Carolina
0 to 4	9,740	110,057
5 to 9	12,891	135,038
10 to 19	20,288	203,469
20 to 49	32,255	352,613
50 to 99	26,711	311,959
100 to 249	30,847	411,508
250 to 499	12,407	294,535
500 to 999	7,086	262,992
1000 +	16,266	738,384

Source: S.C. Department of Employment & Workforce - 2017 Q3

- Indicates that the requested data is suppressed

20 Largest Employers

(Listed Alphabetically)

Corporation Name

CITY OF MYRTLE BEACH

COASTAL CAROLINA UNIVERSITY

CONWAY HOSPITAL INC

COUNTY OF GEORGETOWN

EMBASSY SUITES MANAGEMENT LLC

FOOD LION LLC

GEORGETOWN COUNTY DEPT OF EDUCATION

GEORGETOWN HOSPITAL SYSTEM

GRAND STRAND REGIONAL MEDICAL CENTE

HILTON GRAND VACATIONS COMPANY LLC

HORRY COUNTY COUNCIL

HORRY COUNTY DEPARTMENT OF EDUCATIO

INTERNATIONAL PAPER

LORIS COMMUNITY HOSPITAL DISTRICT

NAN YA PLASTICS CORPORATION AMERICA

SOUTHEAST RESTAURANTS CORPORATION

SYKES ENTERPRISES INC

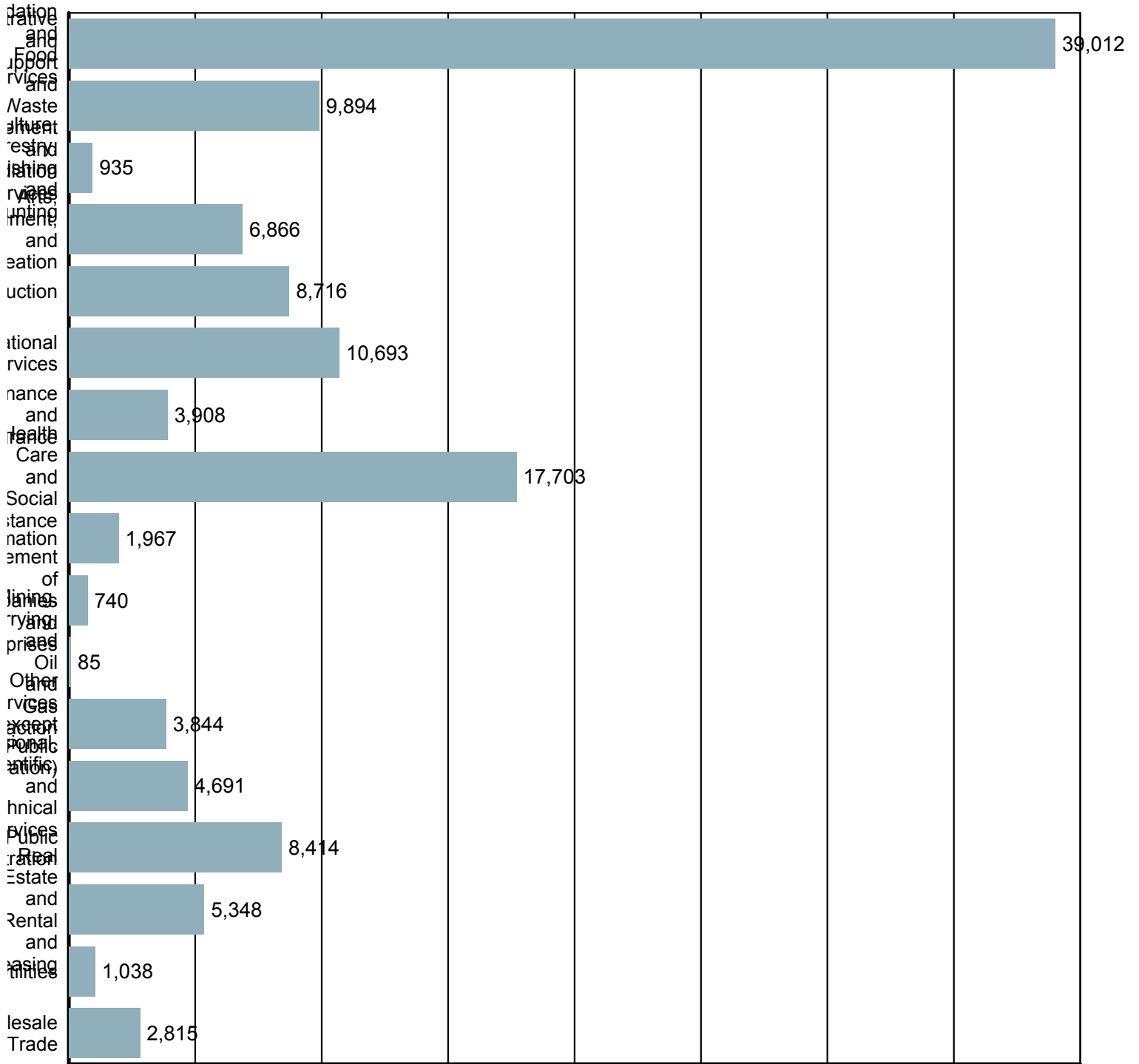
WAL-MART ASSOCIATES INC

WAL-MART ASSOCIATES INC.

WYNDHAM VACATION OWNERSHIP INC

Source: S.C. Department of Employment & Workforce - 2017 Q3

Employment by Industry

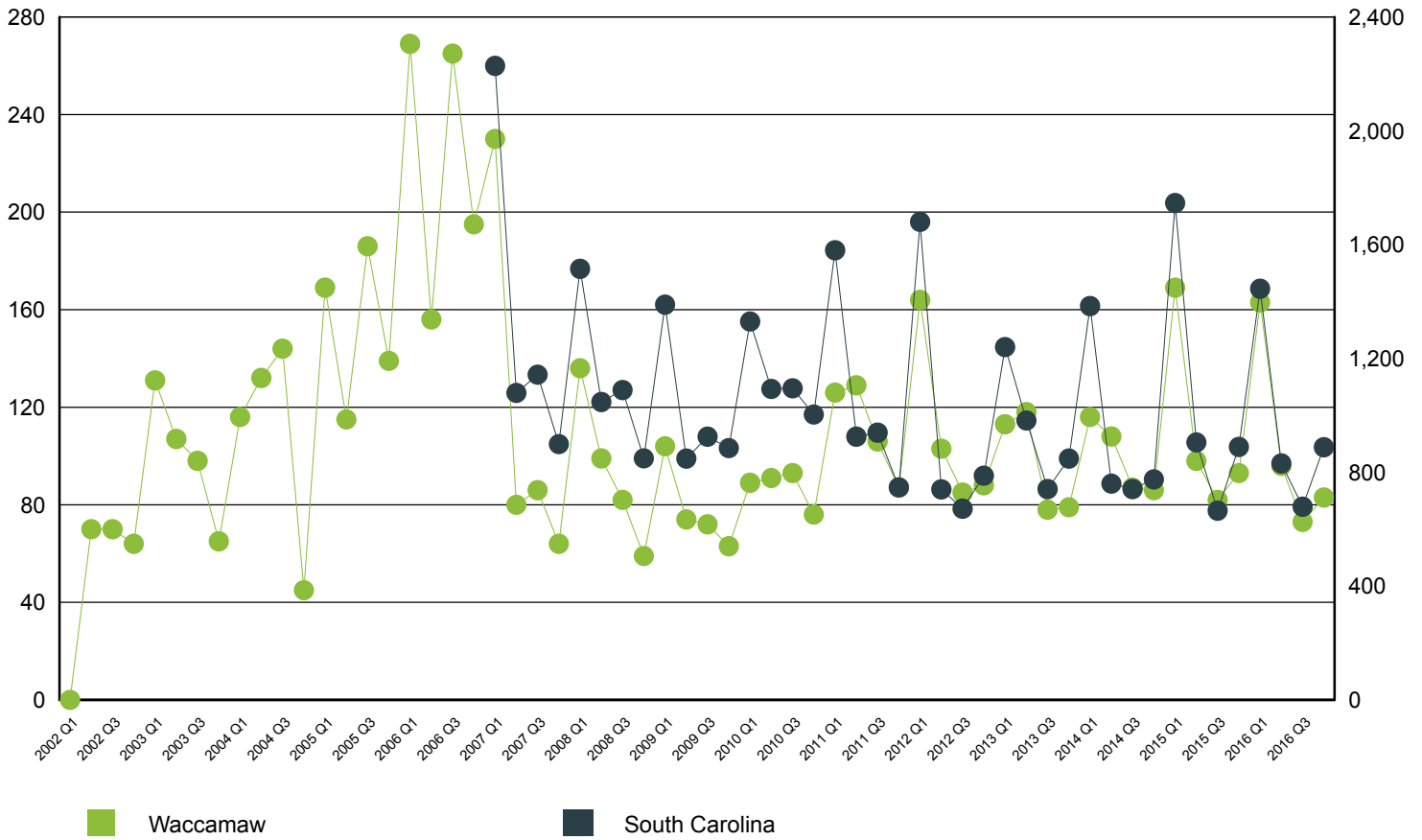


Source: S.C. Department of Employment & Workforce Quarterly Census of Employment and Wages (QCEW) - 2017 Q3

New Startup Firms

Waccamaw

South Carolina



Quarter	Waccamaw	South Carolina
2016 Q4	83	888
2016 Q3	73	679
2016 Q2	96	831
2016 Q1	163	1,445
2015 Q4	93	889
2015 Q3	82	665
2015 Q2	98	905
2015 Q1	169	1,746
2014 Q4	86	775
2014 Q3	87	741
2014 Q2	108	760
2014 Q1	116	1,384
2013 Q4	79	848
2013 Q3	78	741
2013 Q2	118	982
2013 Q1	113	1,240
2012 Q4	88	788
2012 Q3	85	672
2012 Q2	103	740
2012 Q1	164	1,680

Note: A firm is included in the count when it does not have a UI Account Number in the previous quarter and has a Setup Date that falls in the quarter displayed.

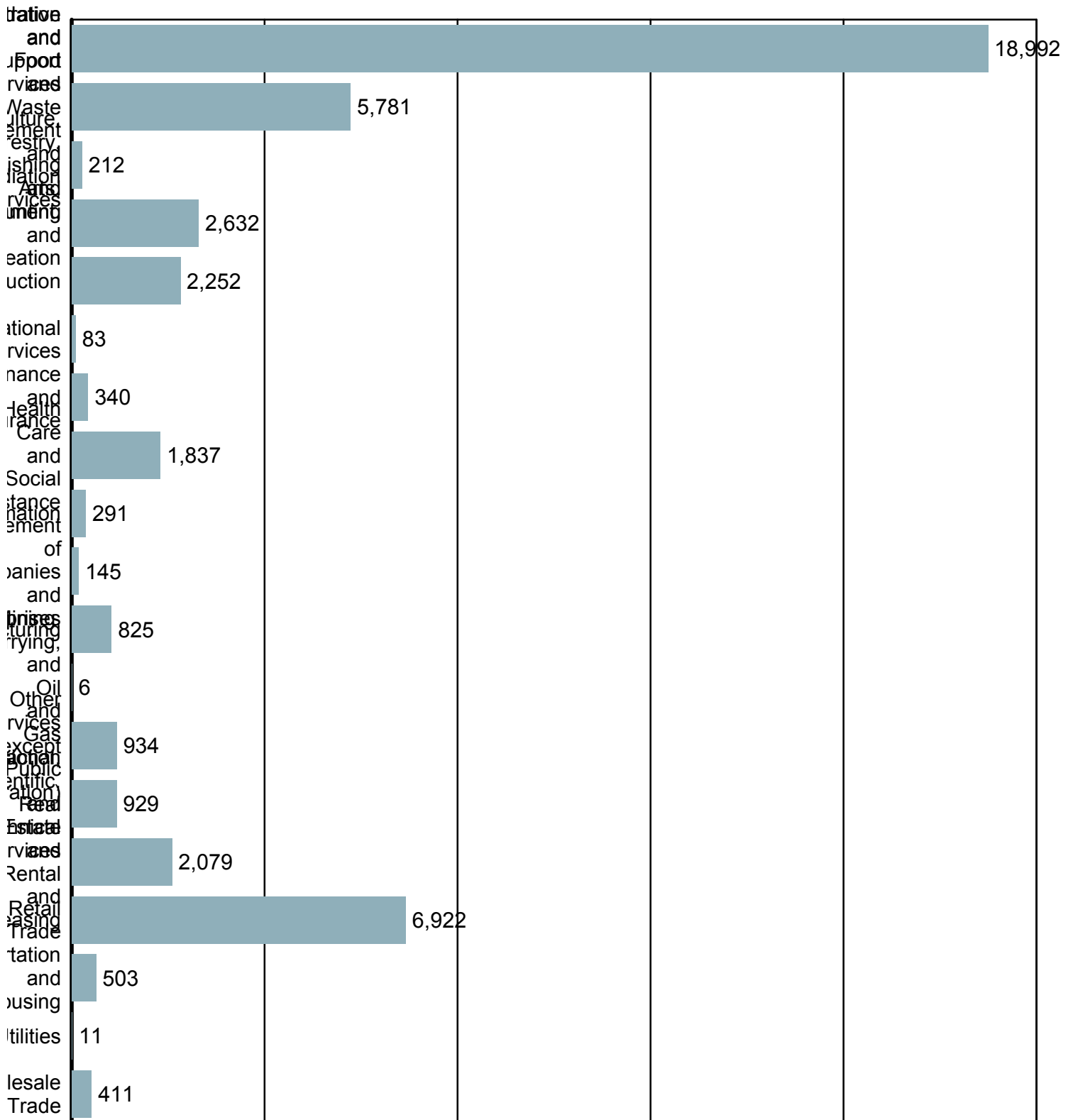
Source: S.C. Department of Employment & Workforce

Top Occupational Openings

Occupation Name (Soccode)	Job Openings

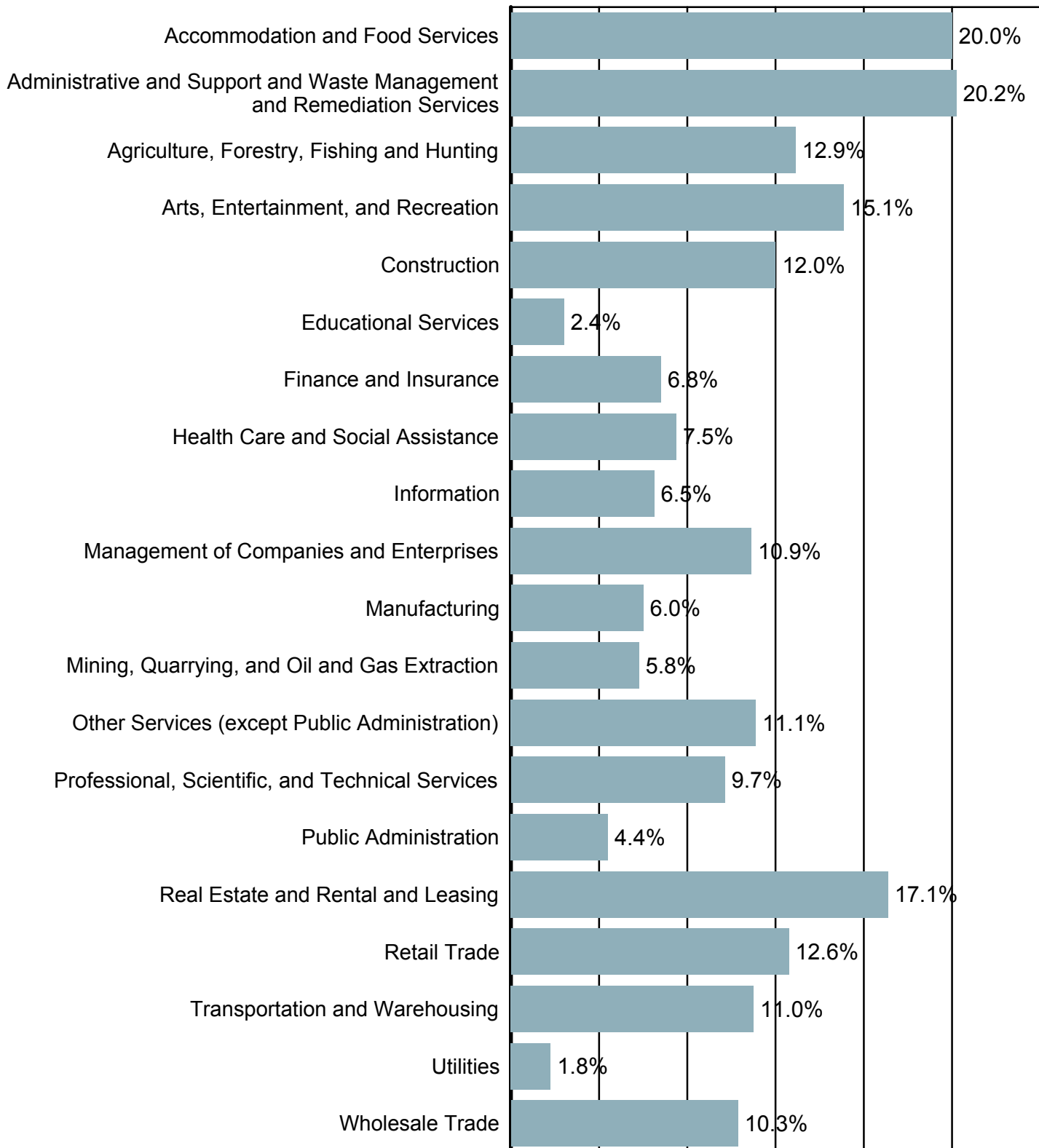
Source: S.C. Department of Employment & Workforce & The Conference Board's Help Wanted OnLine® data series

New Hires by Industry



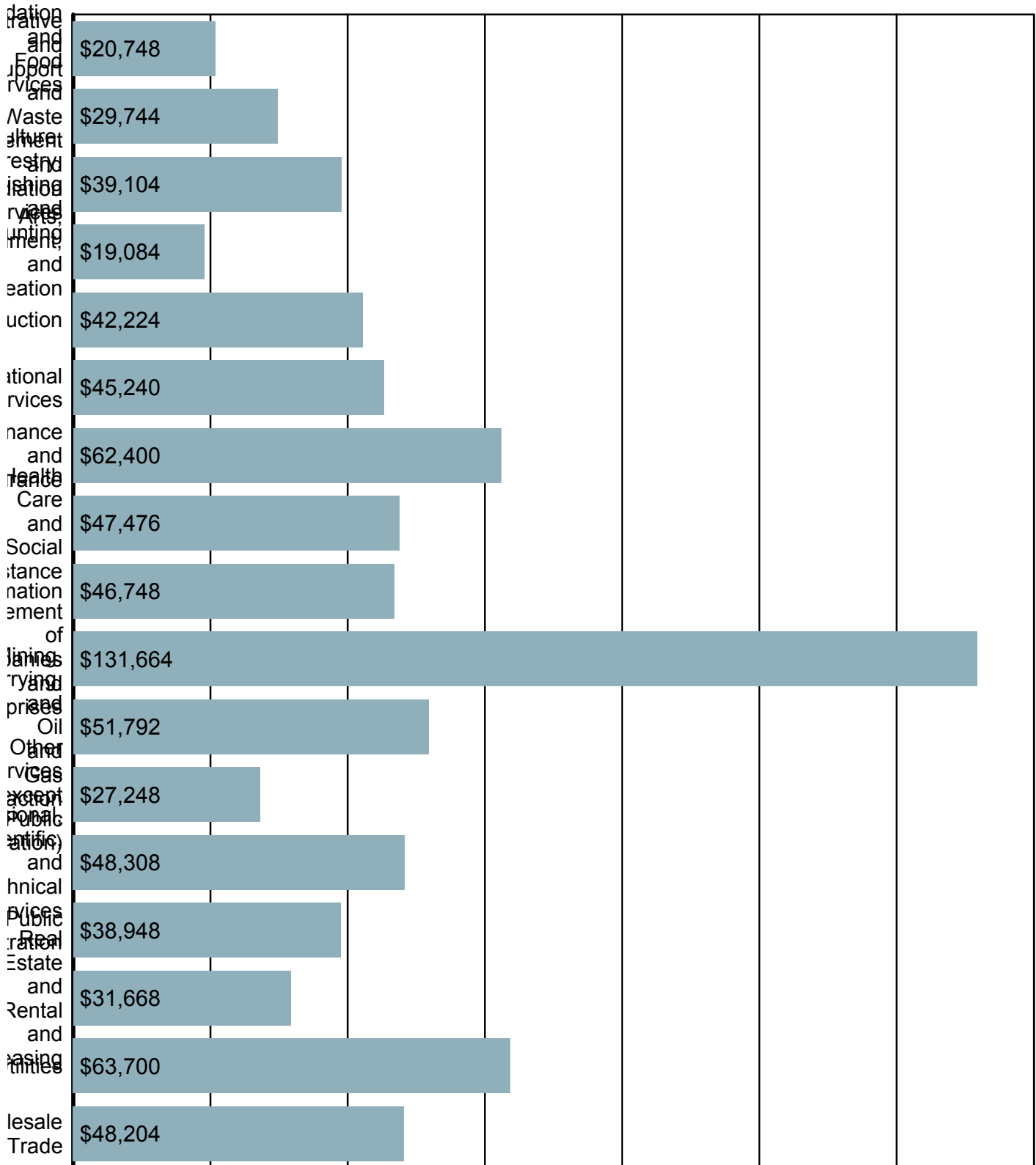
Source: U.S. Census Bureau, Local Employment Dynamics - 2016 Q2

Turnover by Industry



Source: U.S. Census Bureau, Local Employment Dynamics - 2013 Q3

Average Annual Wage by Industry



Source: S.C. Department of Employment & Workforce
 Quarterly Census of Employment and Wages (QCEW) - 2017 Q3

Age of Workers by Industry

Industry	14-18	19-21	22-24	25-34	35-44	45-54	55-64	65+
Total, All Industries	3,913	7,828	9,776	29,233	27,081	27,038	20,588	9,232
Agriculture, Forestry, Fishing and Hunting	7	29	31	156	211	221	186	116
Mining, Quarrying, and Oil and Gas Extraction	0	0	0	6	5	16	10	0
Utilities	0	6	5	81	120	125	77	44
Construction	45	285	522	2,093	2,332	2,274	1,559	516
Manufacturing	41	194	328	1,523	1,754	2,070	1,593	318
Wholesale Trade	20	67	125	526	622	670	515	186
Retail Trade	836	2,001	1,986	4,812	3,985	4,480	3,926	2,057
Transportation and Warehousing	9	54	81	352	453	546	398	142
Information	39	78	158	517	608	542	282	82
Finance and Insurance	7	44	141	789	849	754	637	214
Real Estate and Rental and Leasing	27	133	251	873	1,030	1,152	1,108	555
Professional and Technical Services	44	170	276	1,196	1,202	1,229	948	463
Management of Companies and Enterprises	5	29	34	137	169	209	158	102
Administrative and Waste Services	68	559	1,071	2,866	2,266	2,116	1,496	650
Educational Services	7	19	38	194	210	203	133	62
Health Care and Social Assistance	36	211	546	2,735	3,136	3,179	2,512	850
Arts, Entertainment, and Recreation	205	371	477	1,052	904	883	966	1,026
Accommodation and Food Services	2,481	3,446	3,492	8,661	6,522	5,492	3,431	1,473
Other Services, Except Public Administration	37	133	210	663	704	878	653	375

Source: U.S. Census Bureau, Local Employment Dynamics - 2016 Q2

Labor Market Projections

Total Employment by Industry
(County/Metropolitan Statistical Area Data Unavailable)

Note: Projections are available by Workforce Investment Area (WIA). The data displayed is selected from the appropriate WIA.

Waccamaw Industry	2014 Estimated Employment	2024 Projected Employment	Change	Percent Change	Annual Percent
Total Employment, All Jobs	162,093	180,649	18,556	11.45	1.09
Health care and social assistance	15,072	18,436	3,364	22.32	2.04
Accommodation and food services	32,110	35,287	3,177	9.89	0.95
Administrative and support and waste management and remediat	8,078	10,172	2,094	25.92	2.33
Educational services; state, local, and private	11,599	13,389	1,790	15.43	1.45
Retail Trade	25,720	27,229	1,509	5.87	0.57
Construction	6,780	8,158	1,378	20.32	1.87
Professional, scientific, and technical services	4,344	5,458	1,114	25.64	2.31
Real estate and rental and leasing	4,971	5,452	481	9.68	0.93
Arts, entertainment, and recreation	5,874	6,353	479	8.15	0.79
Wholesale trade	2,616	3,066	450	17.20	1.60
Other services (except public administration)	5,328	5,641	313	5.87	0.57
Finance and insurance	3,088	3,369	281	9.10	0.87
Transportation and Warehousing	1,883	2,057	174	9.24	0.89
Manufacturing	8,179	8,342	163	1.99	0.20
Information	2,029	2,170	141	6.95	0.67
Agriculture, forestry, fishing, and hunting	2,865	2,972	107	3.73	0.37
Management of companies and enterprises	716	775	59	8.24	0.80
Mining, quarrying, and oil and gas extraction	56	59	3	5.36	0.52
Utilities	491	493	2	0.41	0.04

Source: S.C. Department of Employment & Workforce - Industry Projections

Labor Market Projections

Total Employment by Occupation
(County/Metropolitan Statistical Area Data Unavailable)

Note: Projections are available by Workforce Investment Area (WIA). The data displayed is selected from the appropriate WIA.

Waccamaw Occupation	2014 Estimated Employment	2024 Projected Employment	Openings (Replace)	Openings (Growth)	Annual Openings
Total, all occupations	162,093	180,649	4,195	1,932	6,127
Management occupations	8,443	9,559	187	112	299
Business and financial operations occupations	4,062	4,782	88	73	161
Computer and mathematical occupations	1,060	1,242	16	19	35
Architecture and engineering occupations	1,101	1,215	26	12	38
Life, physical, and social science occupations	412	462	12	5	17
Community and social service occupations	1,026	1,213	23	19	42
Legal occupations	924	1,095	18	17	35
Education, training, and library occupations	7,382	8,680	162	130	292
Arts, design, entertainment, sports, and media occupations	2,171	2,364	56	20	76
Healthcare practitioners and technical occupations	7,571	8,864	164	130	294
Healthcare support occupations	3,679	4,439	77	78	155
Protective service occupations	4,690	5,100	112	42	154
Food preparation and serving related occupations	25,152	27,706	963	272	1,235
Building and grounds cleaning and maintenance occupations	12,232	13,782	254	155	409
Personal care and service occupations	5,968	7,105	148	114	262
Sales and related occupations	24,225	26,243	753	202	955
Office and administrative support occupations	21,972	23,866	490	211	701
Farming, fishing, and forestry occupations	1,927	1,910	49	13	62
Construction and extraction occupations	6,376	7,503	101	113	214
Installation, maintenance, and repair occupations	7,141	7,905	168	77	245
Production occupations	6,711	6,934	150	36	186
Transportation and material moving occupations	7,868	8,680	179	83	262

Source: S.C. Department of Employment & Workforce - Occupational Projections

Labor Market Projections

Growing Occupations
(County/Metropolitan Statistical Area Data Unavailable)

Note: Projections are available by Workforce Investment Area (WIA). The data displayed is selected from the appropriate WIA.

Waccamaw Occupation	2014 Estimated Employment	2024 Projected Employment	Percent Change	Replace	Growth	Total	Average Salary
Web developers	45	67	49	1	2	3	\$ 44,702
Home health aides	456	649	42	10	19	29	\$ 19,175
Personal care aides	1,267	1,795	42	10	53	63	\$ 18,613
Nurse practitioners	68	95	40	2	3	5	\$ 84,410
Veterinary technologists and technicians	100	138	38	1	4	5	\$ 26,866
Education administrators, preschool and childcare center/pro	28	38	36	1	1	2	\$ 36,858
Computer-controlled machine tool operators, metal and plasti	146	198	36	4	5	9	\$ 22,176
Social and community service managers	67	89	33	2	2	4	\$ 62,205
Marriage and family therapists	43	57	33	1	1	2	\$ 30,935
Preschool teachers, except special education	313	414	32	9	10	19	\$ 32,423
Industrial machinery mechanics	149	197	32	4	5	9	\$ 35,428
Physician assistants	47	62	32	1	2	3	\$ 84,384
Animal trainers	72	94	31	3	2	5	\$ 31,149
Management analysts	394	514	30	6	12	18	\$ 87,784
Mental health counselors	91	118	30	2	3	5	\$ 34,590
Software developers, applications	78	101	29	1	2	3	\$ 75,235
Social and human service assistants	109	141	29	2	3	5	\$ 33,221
Concierges	31	40	29	1	1	2	\$ 23,998
Optometrists	38	49	29	1	1	2	\$ 79,000
Diagnostic medical sonographers	66	85	29	1	2	3	\$ 50,794

Occupations are sorted by highest estimated percentage growth from estimate year to projection year.

Source: S.C. Department of Employment & Workforce - Occupational Projections

Labor Market Projections

Declining Occupations

(County/Metropolitan Statistical Area Data Unavailable)

Note: Projections are available by Workforce Investment Area (WIA). The data displayed is selected from the appropriate WIA.

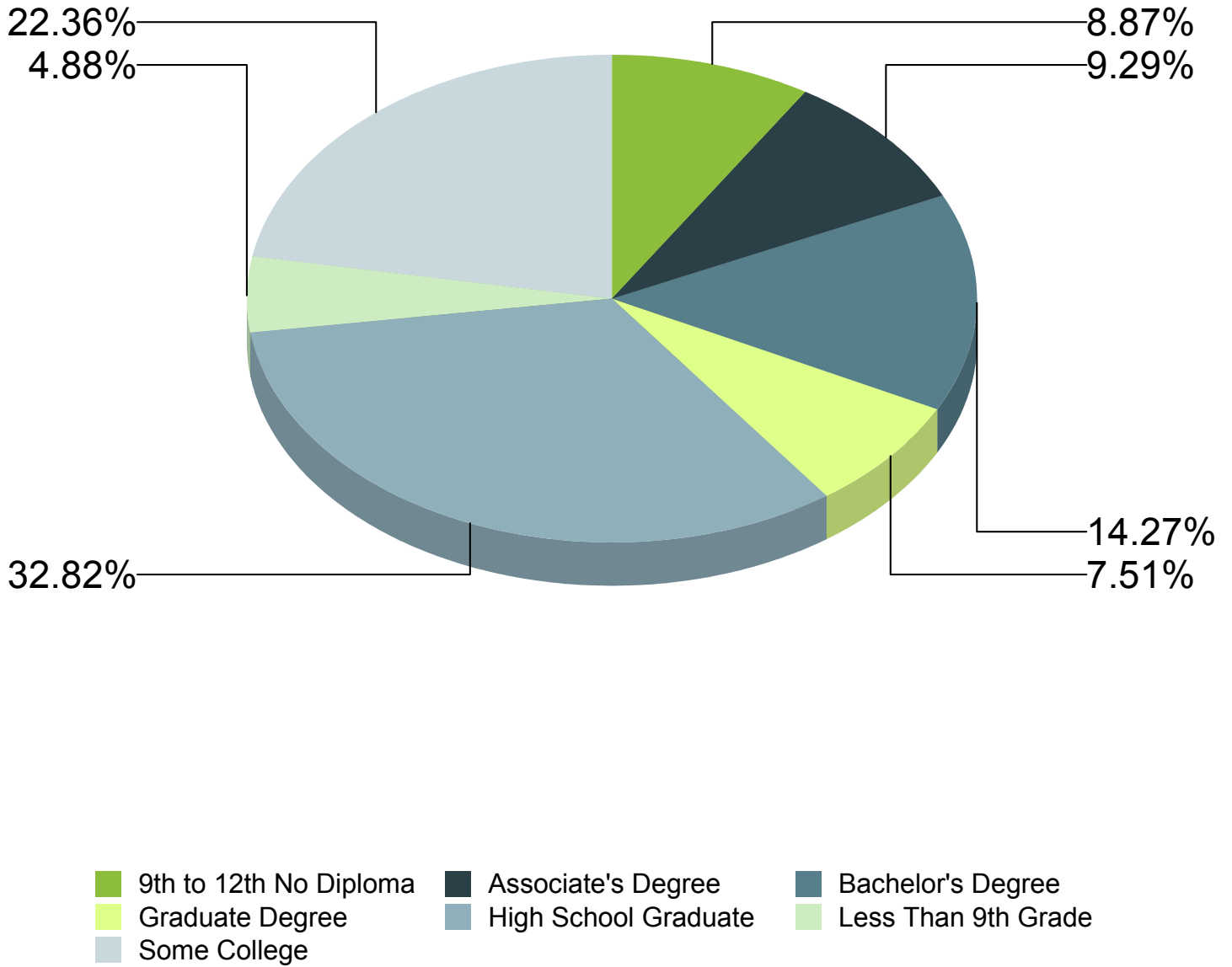
Waccamaw	2014	2024					
Occupation	Estimated Employment	Projected Employment	Percent Change	Replace	Growth	Total	Average Salary
Logging equipment operators	353	270	-24	8	0	8	\$ 37,805
Respiratory therapy technicians	21	17	-19	0	0	0	\$ 43,298
Medical transcriptionists	80	66	-18	2	0	2	\$ 34,290
Postal service mail carriers	323	273	-15	6	0	6	\$ 50,839
Postal service clerks	62	53	-15	1	0	1	\$ 51,866
Postmasters and mail superintendents	14	12	-14	0	0	0	\$ 78,395
Meter readers, utilities	111	96	-14	2	0	2	\$ 36,681
Cooks, fast food	1,223	1,084	-11	32	0	32	\$ 17,234
Extruding and drawing machine setters, operators, and tender	62	55	-11	2	0	2	\$ 37,139
Lathe and turning machine tool setters, operators, and tenders	63	56	-11	2	0	2	\$ 38,087
First-line supervisors of farming, fishing, and forestry workers	144	128	-11	4	0	4	\$ 60,205
Molding, coremaking, and casting machine setters, operators, and tenders	174	155	-11	3	0	3	\$ 28,850
Gaming change persons and booth cashiers	30	27	-10	1	0	1	\$ 18,783
Transportation security screeners	71	64	-10	1	0	1	\$ 38,145
Cutters and trimmers, hand	21	19	-10	0	0	0	\$ 21,262
Printing press operators	100	92	-8	2	0	2	\$ 24,462
Cutting and slicing machine setters, operators, and tenders	77	71	-8	2	0	2	\$ 35,696
Healthcare support workers, all other	14	13	-7	0	0	0	\$ 31,098
Embalmers	14	13	-7	0	0	0	\$ 43,509
Managers, all other	90	84	-7	2	0	2	\$ 86,083

Occupations are sorted by highest estimated percentage decline from estimate year to projection year.

Source: S.C. Department of Employment & Workforce - Occupational Projections

Educational Attainment

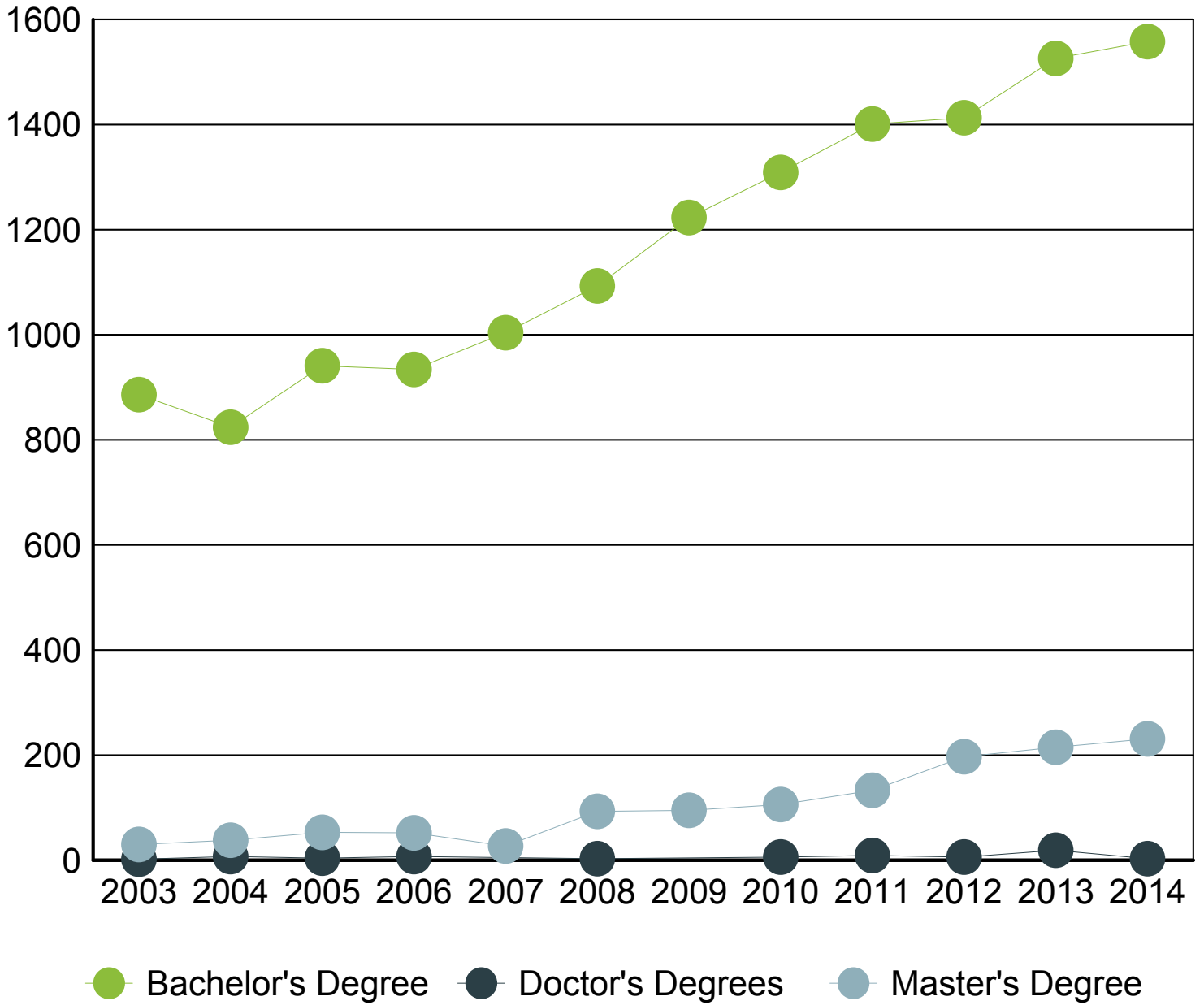
(Population 25 Years and Older)



Source: U.S. Census Bureau, American Community Survey - 2013 5-Year Estimates

Graduate Trends

(Based On Graduates From Area Schools)



Source: Institute of Education Sciences (IES), Integrated Postsecondary Education Data System

Educational Institutions

Cathedral Bible College
803 Howard Avenue
Myrtle Beach, SC 29577
843.477.1503

<http://www.cathedralministries.org>

2014 Degrees Awarded: 19

Golf Academy of America-Myrtle Beach
3268 Waccamaw Blvd.
Myrtle Beach, SC 29579
800.342.7342

<http://www.golfacademy.edu>

2014 Degrees Awarded: 180

ITT Technical Institute-Myrtle Beach
9654 North King's Highway, Suite 10
Myrtle Beach, SC 29572
843.497.7820

<http://www.itt-tech.edu>

2014 Degrees Awarded: 49

Strand College of Hair Design
423 79th Ave N
Myrtle Beach, SC 29572
843.467.2397

<http://www.strandcollege.com>

2014 Degrees Awarded: 22

Coastal Carolina University
103 Tom Trout Drive
Conway, SC 29526
843.347.3161

<http://www.coastal.edu>

2014 Degrees Awarded: 1,785

Horry-Georgetown Technical College
2050 Highway 501 East
Conway, SC 29526
843.347.3186

<http://www.hgtc.edu>

2014 Degrees Awarded: 1,582

Miller-Motte Technical College-Conway
2541 Highway 501 East
Conway, SC 29526
843.591.1100

<http://www.miller-motte.edu>

2014 Degrees Awarded: 384

Williamsburg Technical College
601 Martin Luther King Jr Ave
Kingstree, SC 29556
843.355.4110

<http://www.wiltech.edu>

2014 Degrees Awarded: 127

Source: Institute of Education Sciences (IES), Integrated Postsecondary Education Data System