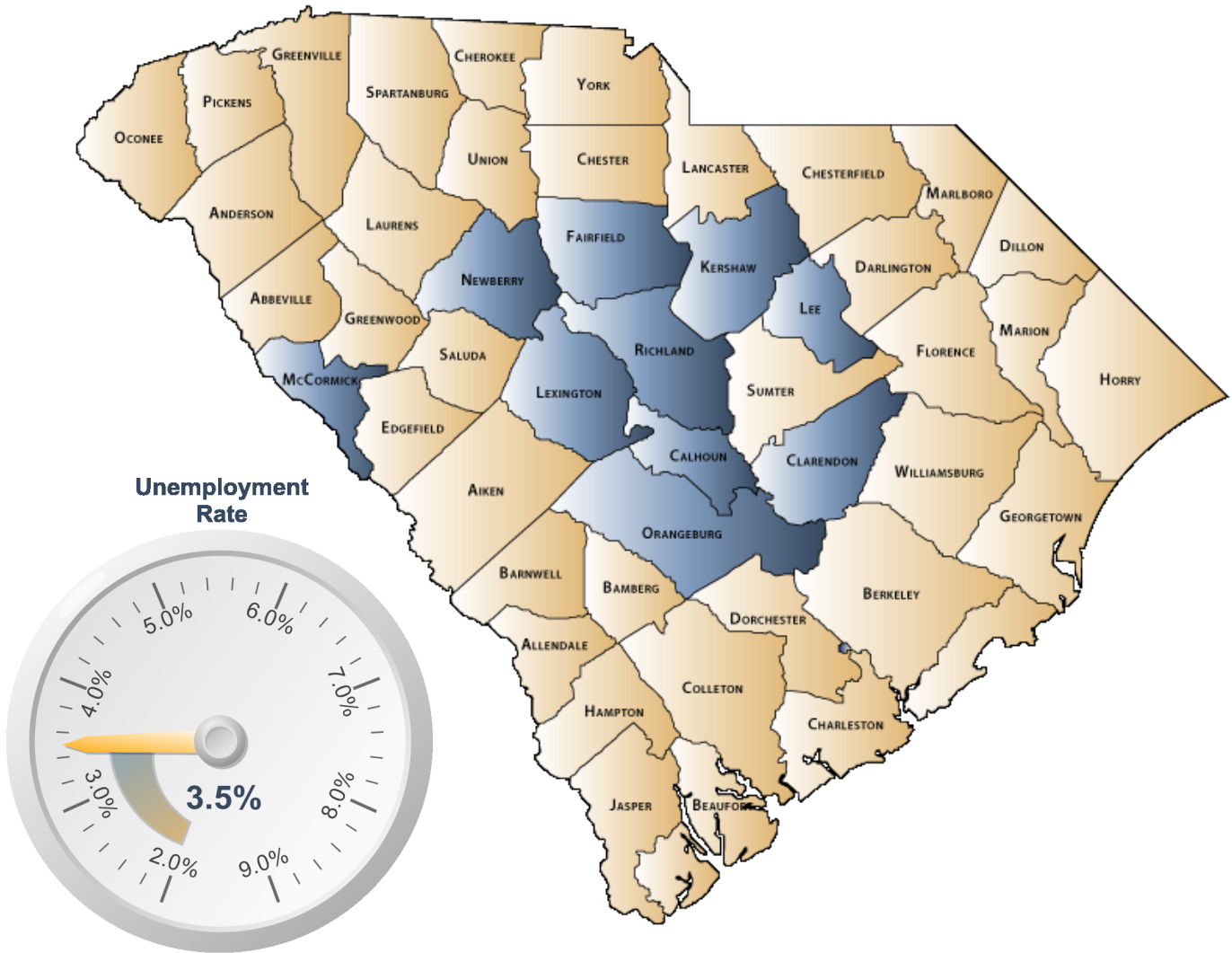


# ECONOMIC PROFILE

Central SC Alliance



**S.C. Department of Employment & Workforce**  
Labor Market Information

1550 Gadsden Street, PO Box 995  
Columbia, SC 29202  
803-737-2660

[www.SCWorkforceInfo.com](http://www.SCWorkforceInfo.com)

<http://www.CentralSC.org/>

Updated: 11/19/2018

## Table of Contents

### 1. Economic Data

Annual Unemployment Rates.....	3
Monthly Unemployment Rates.....	4
Area Job Openings.....	5
Unemployment Insurance	
Demographic Data.....	6
Industry Data.....	7
Occupation Data.....	8
Retail Sales.....	9

### 2. Demographic Data

Population	
Age.....	10
Race.....	11
Gender.....	11
Change.....	12
Employer Data	
Size of Establishments.....	13
Employment by Size of Establishment.....	13
20 Largest Employers.....	14

### 3. Industry Data

Employment by Industry.....	15
New Startup Firms.....	16
Top Occupational Openings.....	17
New Hires by Industry.....	18
Average Annual Wage by Industry.....	19
Age of Workers by Industry.....	20

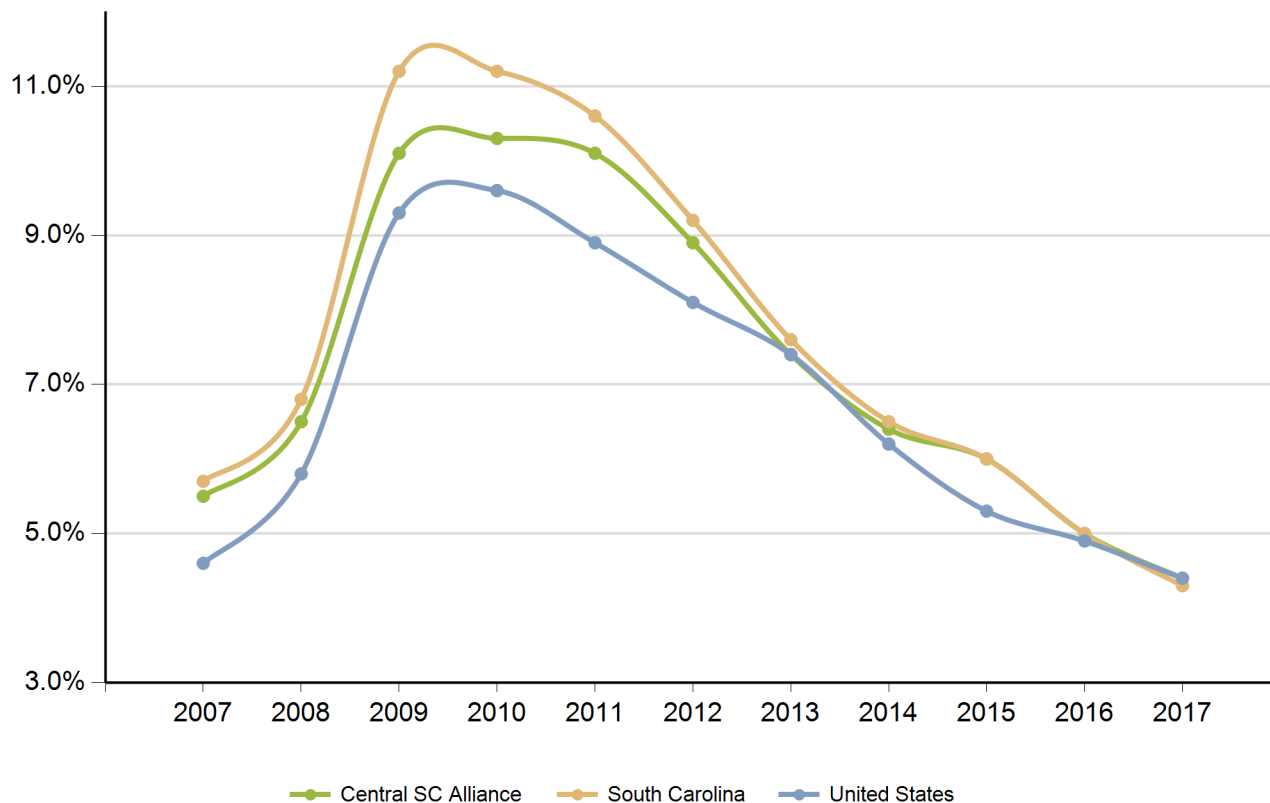
### 4. Education Data

Educational Attainment.....	21
Graduate Trends.....	22
Educational Institutions.....	23

**\*Disclaimer: All data provided is an aggregate of the counties' data that comprise the Central SC Alliance**

### Annual Unemployment Rate (Unadjusted)

Trends

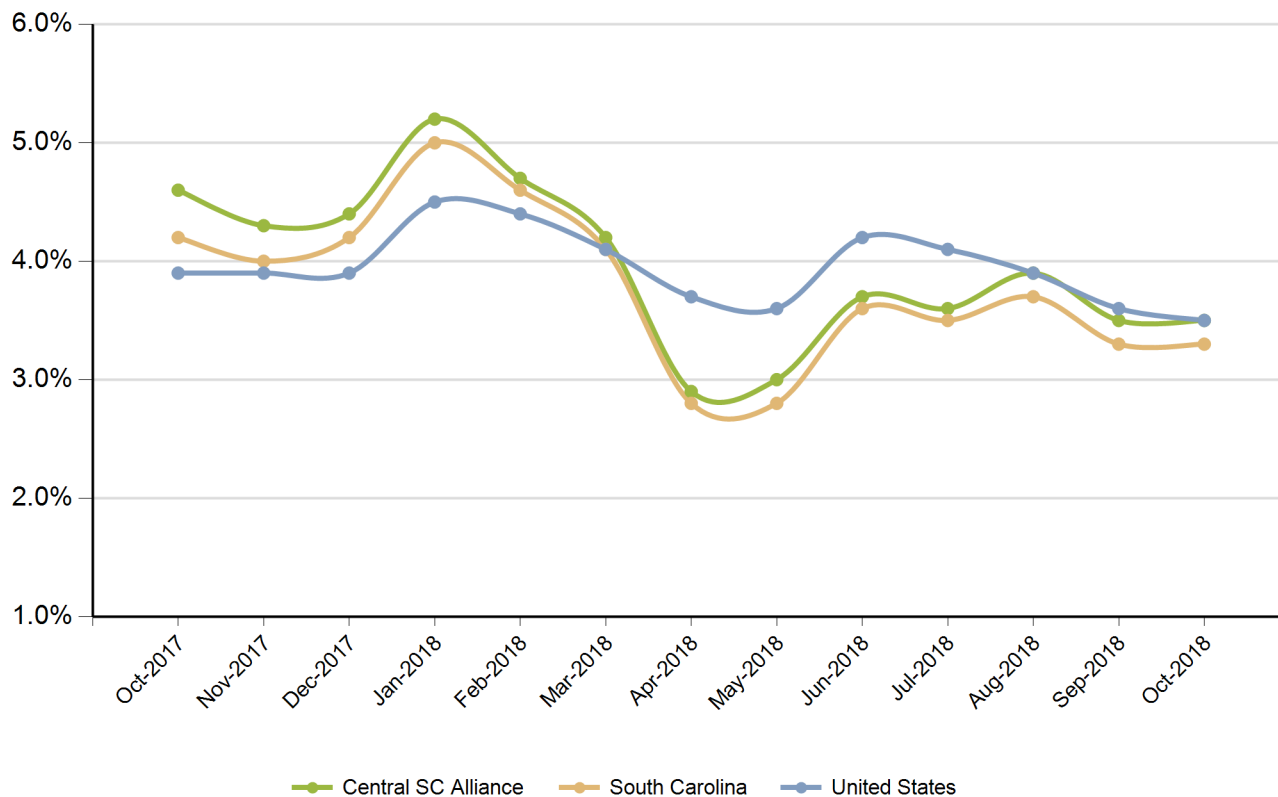


Year	Central SC Alliance			South Carolina			United States		
	Employed	Unemployed	Unemp Rate	Employed	Unemployed	Unemp Rate	Employed	Unemployed	Unemp Rate
2007	417,147	24,109	5.5%	2,005,686	120,205	5.7%	146,047,000	7,078,000	4.6%
2008	415,581	28,940	6.5%	1,996,409	145,823	6.8%	145,362,000	8,924,000	5.8%
2009	400,096	44,817	10.1%	1,910,670	242,075	11.2%	139,877,000	14,265,000	9.3%
2010	400,951	45,907	10.3%	1,915,045	240,623	11.2%	139,064,000	14,825,000	9.6%
2011	404,301	45,314	10.1%	1,945,900	229,623	10.6%	139,869,000	13,747,000	8.9%
2012	412,434	40,165	8.9%	1,985,618	201,260	9.2%	142,469,000	12,506,000	8.1%
2013	419,100	33,427	7.4%	2,023,642	167,326	7.6%	143,929,000	11,460,000	7.4%
2014	430,874	29,308	6.4%	2,079,565	143,413	6.5%	146,305,000	9,617,000	6.2%
2015	440,677	28,099	6.0%	2,134,244	135,095	6.0%	148,834,000	8,296,000	5.3%
2016	448,360	23,790	5.0%	2,179,521	114,145	5.0%	151,436,000	7,751,000	4.9%
2017	448,915	20,854	4.4%	2,213,894	98,757	4.3%	153,337,000	6,982,000	4.4%

Source: SC Department of Employment & Workforce

### Monthly Unemployment Rate (Unadjusted)

Past 13 Months



Period	Central SC Alliance	South Carolina	United States
Oct-2017	4.6%	4.2%	3.9%
Nov-2017	4.3%	4.0%	3.9%
Dec-2017	4.4%	4.2%	3.9%
Jan-2018	5.2%	5.0%	4.5%
Feb-2018	4.7%	4.6%	4.4%
Mar-2018	4.2%	4.1%	4.1%
Apr-2018	2.9%	2.8%	3.7%
May-2018	3.0%	2.8%	3.6%
Jun-2018	3.7%	3.6%	4.2%
Jul-2018	3.6%	3.5%	4.1%
Aug-2018	3.9%	3.7%	3.9%
Sep-2018	3.5%	3.3%	3.6%
Oct-2018	3.5%	3.3%	3.5%

Source: SC Department of Employment & Workforce

## Area Job Openings

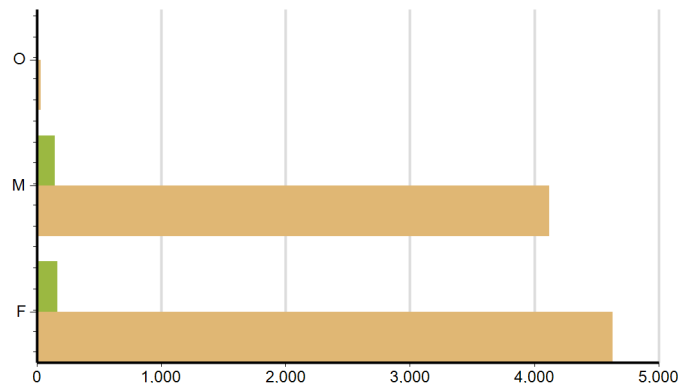
Period	Central SC Alliance				South Carolina			
	Employed	Unemployed	Unemp Rate	Job Openings	Employed	Unemployed	Unemp Rate	Job Openings
Oct-2017	447,625	21,429	4.6%	13,342	2,221,475	97,934	4.2%	57,940
Nov-2017	445,612	20,012	4.3%	12,238	2,221,189	97,944	4.2%	60,228
Dec-2017	445,182	20,485	4.4%	11,807	2,220,845	97,879	4.2%	56,028
Jan-2018	442,698	24,133	5.2%	13,290	2,221,051	100,182	4.3%	51,746
Feb-2018	447,992	21,891	4.7%	12,756	2,223,397	101,415	4.4%	57,596
Mar-2018	448,552	19,532	4.2%	14,148	2,225,252	102,079	4.4%	59,107
Apr-2018	447,866	13,476	2.9%	14,235	2,225,655	97,929	4.2%	64,770
May-2018	448,393	13,672	3.0%	13,425	2,225,414	92,505	4.0%	61,940
Jun-2018	449,077	17,353	3.7%	14,114	2,225,973	87,096	3.8%	57,230
Jul-2018	453,222	16,976	3.6%	14,042	2,227,550	82,339	3.6%	62,943
Aug-2018	448,063	18,094	3.9%	16,360	2,227,762	78,758	3.4%	63,496
Sep-2018	447,593	16,169	3.5%	12,370	2,227,597	76,741	3.3%	61,190
Oct-2018	449,550	16,172	3.5%	13,451	2,231,027	76,220	3.3%	55,358

Source: SC Department of Employment & Workforce, The Conference Board's Help Wanted OnLine® Data Series  
South Carolina Data is Seasonally Adjusted

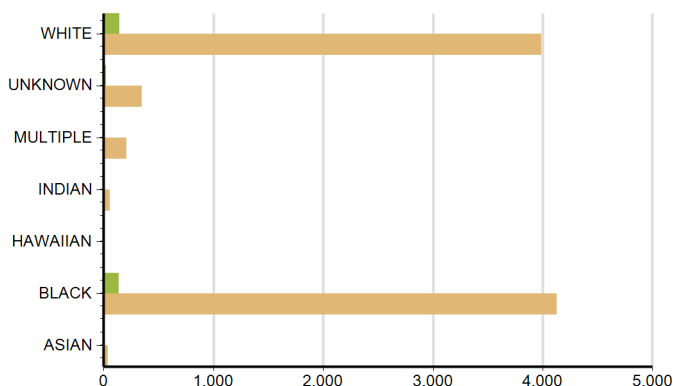
## Characteristics of Unemployment Insurance Claimants

October-2018

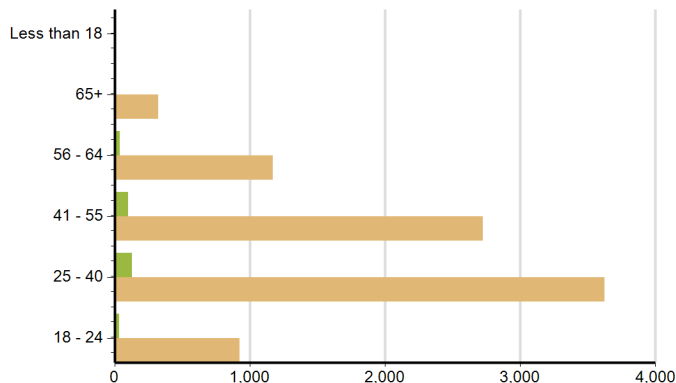
Gender	Central SC Alliance	South Carolina
Male	142	4,121
Female	1	33
Female	167	4,628



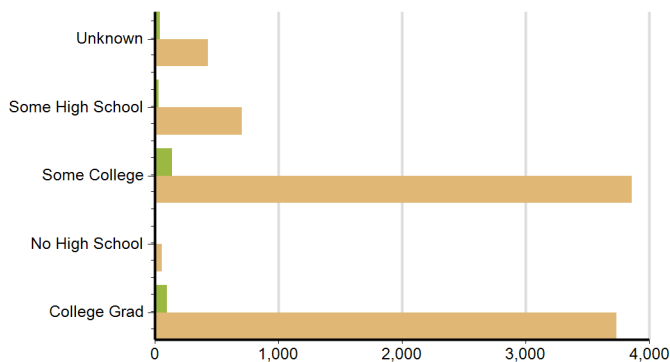
Race	Central SC Alliance	South Carolina
BLACK	136	4,130
UNKNOWN	18	349
MULTIPLE	9	210
WHITE	141	3,991
INDIAN	6	55



Age Group	Central SC Alliance	South Carolina
25 - 40	128	3,626
18 - 24	37	925
41 - 55	100	2,723
56 - 64	38	1,170
65+	7	325



Education	Central SC Alliance	South Carolina
Unknown	39	429
Some High School	30	702
Some College	141	3,860
College Grad	98	3,734
No High School	2	57

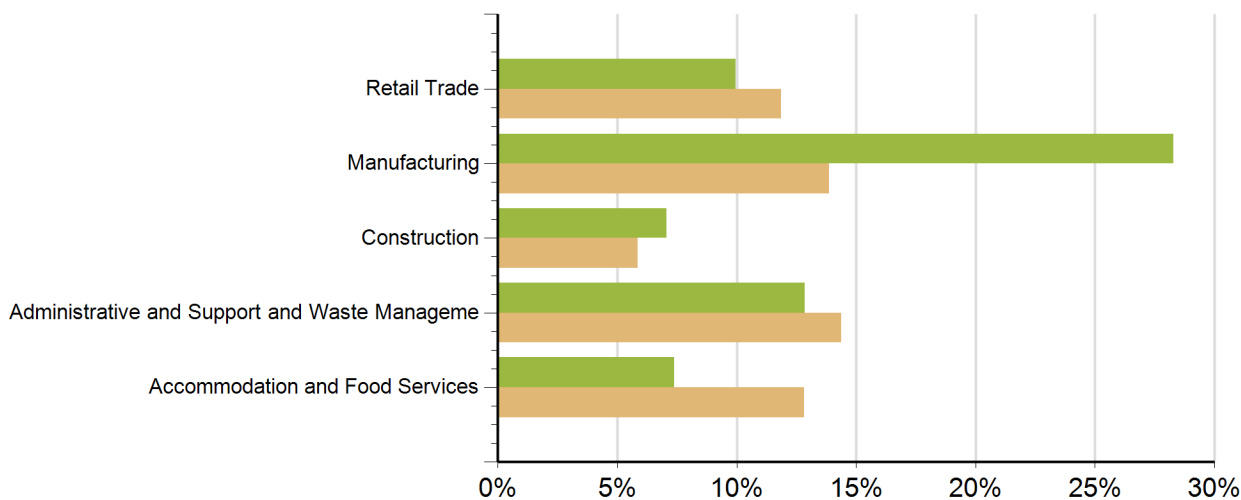


Source: SC Department of Employment & Workforce

## Characteristics of Unemployment Insurance Claims by Industry

Industry Groups with Largest Number of Claims

October-2018



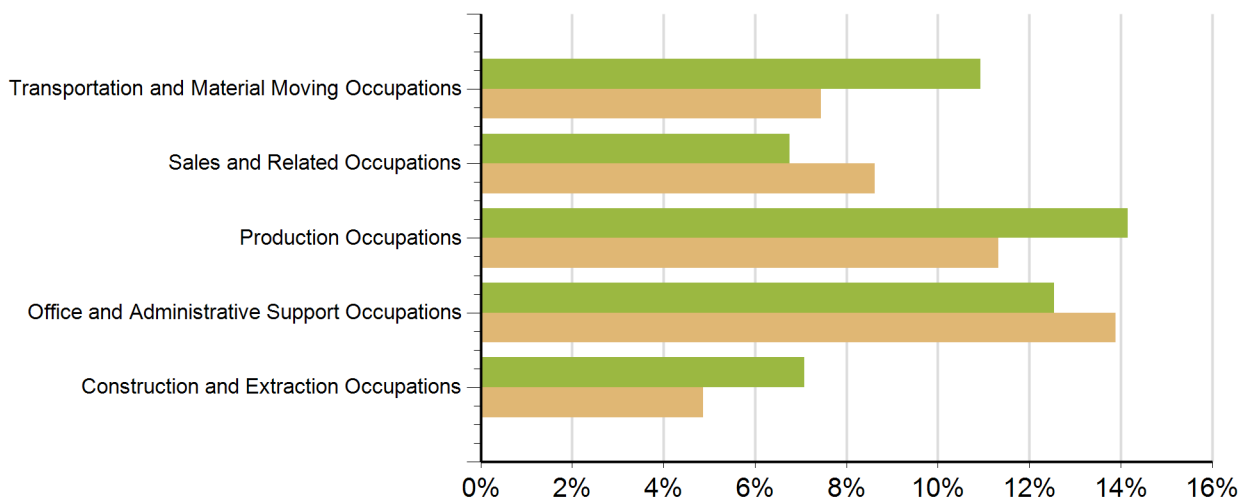
Industry	Central SC Alliance	South Carolina
Information	2	92
Management of Companies and Enterprises	1	34
Other Services (except Public Administration)	7	152
Administrative and Support and Waste Management	40	1,270
Unknown	27	789
Manufacturing	88	1,224
Arts, Entertainment, and Recreation	1	129
Accommodation and Food Services	23	1,131
Construction	22	516
Finance and Insurance	4	199
Real Estate and Rental and Leasing	2	204
Transportation and Warehousing	7	232
Health Care and Social Assistance	18	659
Wholesale Trade	13	309
Professional, Scientific, and Technical Services	13	439
Retail Trade	31	1,048
Public Administration	4	151
Educational Services	7	158
Utilities	1	13

Source: SC Department of Employment & Workforce

## Characteristics of Unemployment Insurance Claims by Occupation

### Occupation Groups with Largest Number of Claims

October-2018

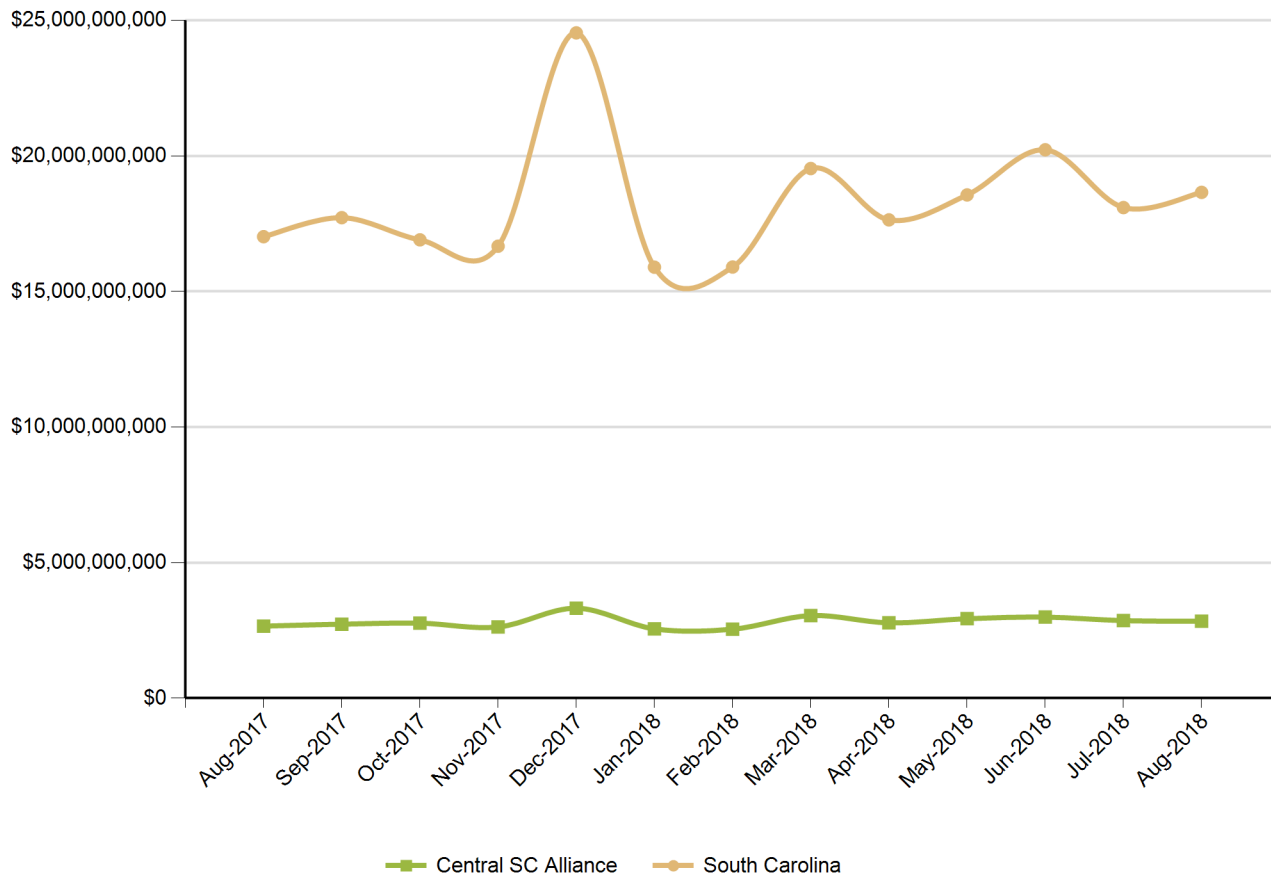


Occupation	Central SC Alliance	South Carolina
Architecture and Engineering Occupations	8	215
Arts, Design, Entertainment, Sports, and Media Occ	6	90
Building and Grounds Cleaning and Maintenance Occu	9	403
Business and Financial Operations Occupations	7	260
Community and Social Service Occupations	1	62
Computer and Mathematical Occupations	3	137
Construction and Extraction Occupations	22	430
Educational Instruction and Library Occupations	3	136
Farming, Fishing, and Forestry Occupations	4	55
Food Preparation and Serving Related Occupations	10	744
Healthcare Practitioners and Technical Occupations	9	206
Healthcare Support Occupations	7	237
Installation, Maintenance, and Repair Occupations	11	371
Legal Occupations	1	36
Life, Physical, and Social Science Occupations	3	76
Management Occupations	14	769
Office and Administrative Support Occupations	39	1,226
Personal Care and Service Occupations	4	127
Production Occupations	44	999
Protective Service Occupations	3	102
Sales and Related Occupations	21	761
Transportation and Material Moving Occupations	34	657
Unknown	48	718

Source: SC Department of Employment & Workforce

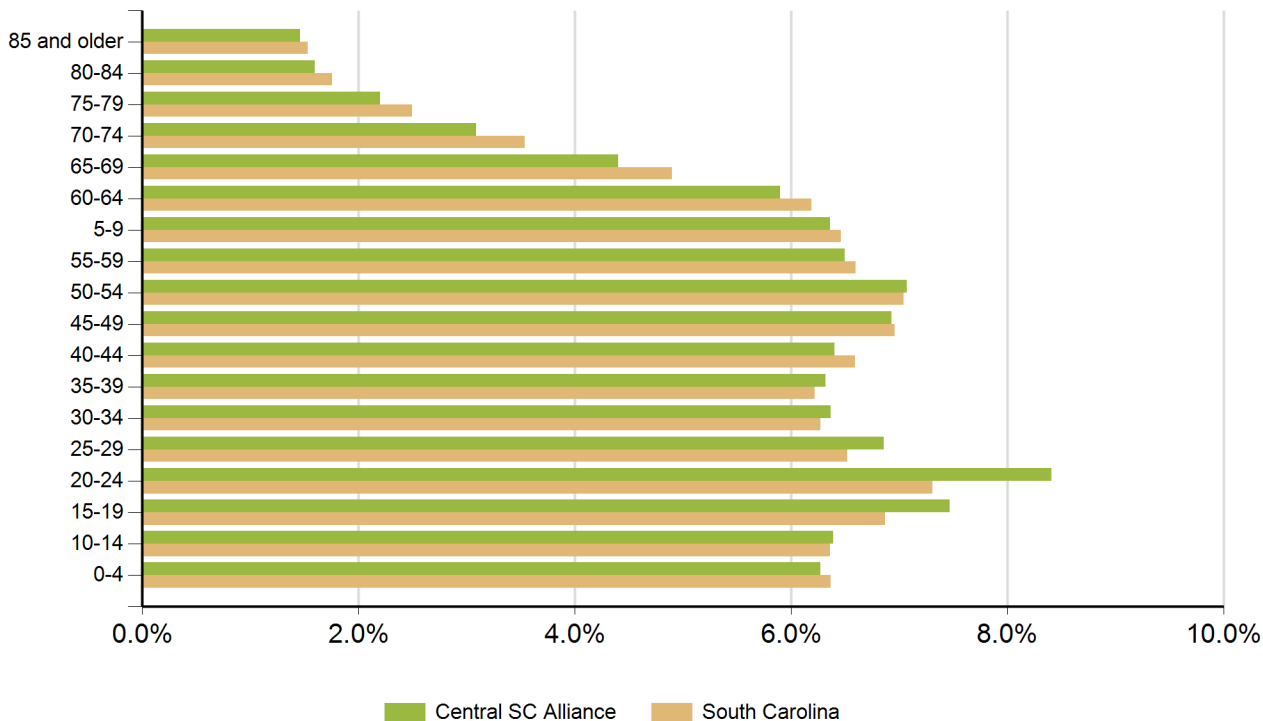


### Retail Sales



Source: SC Department of Revenue

### Population by Age



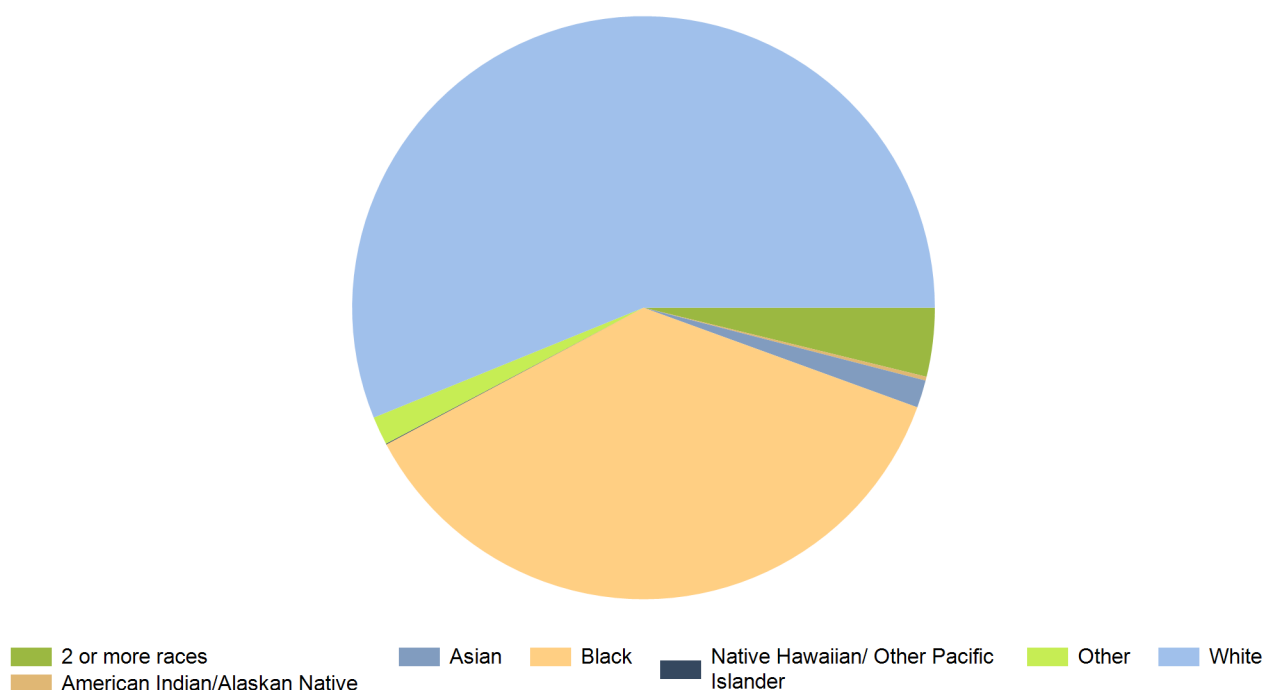
Age Range	Central SC Alliance	South Carolina	United States
0-4	59,603	298,242	20,052,112
5-9	60,451	302,111	20,409,060
10-14	60,674	297,443	20,672,609
15-19	70,951	321,540	21,715,074
20-24	79,882	342,237	22,099,887
25-29	65,149	305,167	21,243,365
30-34	60,473	293,464	20,467,912
35-39	60,060	291,183	19,876,161
40-44	60,778	308,158	20,998,001
45-49	65,801	325,660	22,109,946
50-54	67,120	329,431	22,396,322
55-59	61,772	309,061	20,165,892
60-64	56,080	289,690	17,479,211
65-69	41,785	229,251	13,189,508
70-74	29,372	165,797	9,767,522
75-79	20,933	117,187	7,438,750
80-84	15,171	82,223	5,781,697
85 and older	13,827	71,757	5,673,565

Source: US Census Bureau, American Community Survey

### Population by Race

Race	Central SC Alliance	%	South Carolina	%	United States	%
White	543,712	56.2%	3,144,146	66.0%	230,592,579	72.0%
Black	355,169	36.7%	1,298,534	27.3%	39,167,010	12.2%
American Indian/Alaskan Native	2,099	0.2%	14,732	0.3%	2,540,309	0.8%
Asian	14,791	1.5%	61,097	1.3%	15,231,962	4.8%
Native Hawaiian/ Other Pacific Islander	417	0.0%	2,128	0.0%	526,347	0.2%
2 or more races	36,840	3.8%	169,670	3.6%	17,464,666	5.5%
Other	15,274	1.6%	74,130	1.6%	14,746,054	4.6%

Source: US Census Bureau, American Community Survey



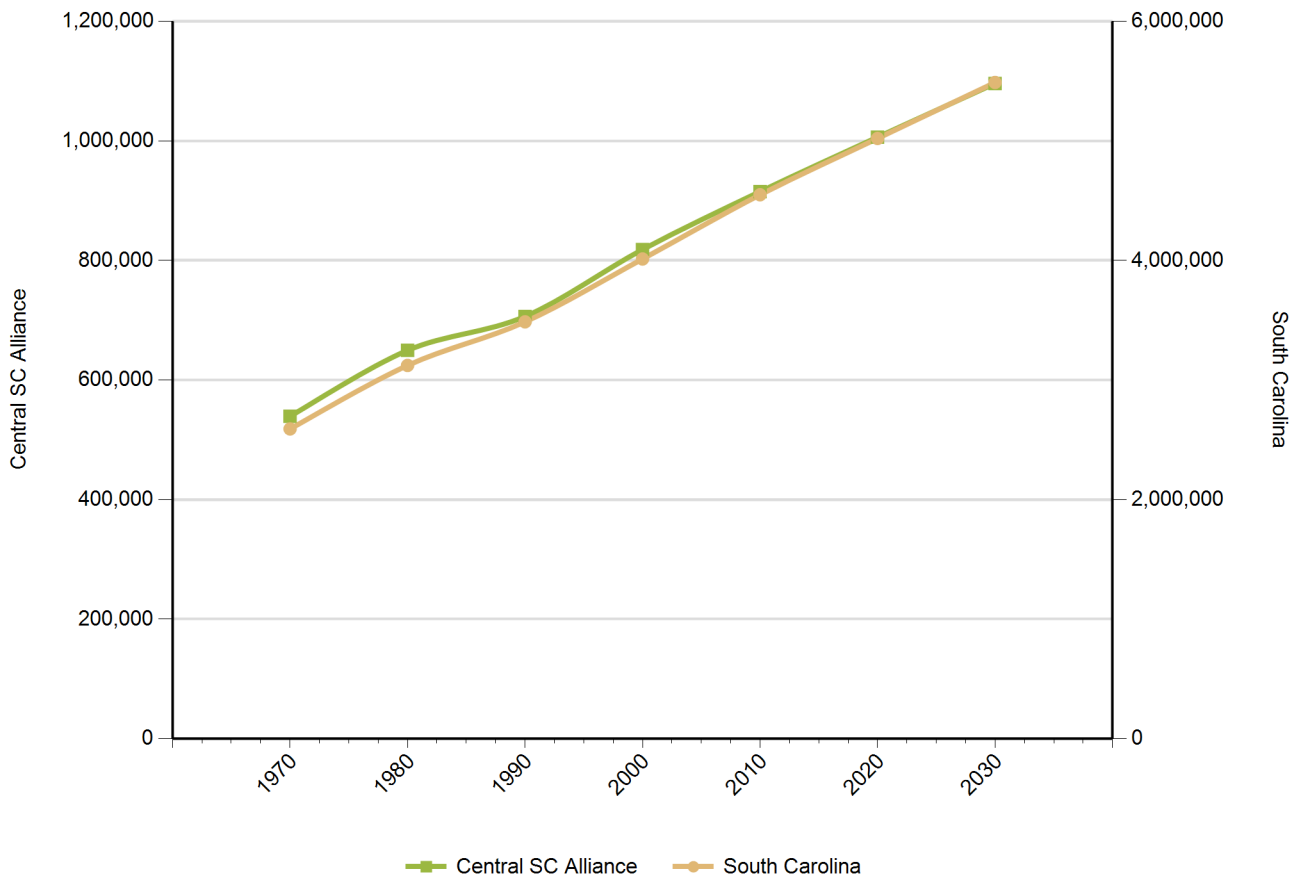
### Population by Gender

Gender	Central SC Alliance	South Carolina	United States
Female	487,923	2,403,297	158,289,182
Male	461,959	2,276,305	153,247,412

Source: US Census Bureau, American Community Survey

# Population Change

*Historical and Projected*



Year	Central SC Alliance	South Carolina
1970	539,330	2,590,713
1980	649,584	3,121,820
1990	706,225	3,486,310
2000	818,246	4,012,012
2010	915,160	4,549,150
2020	1,006,260	5,020,400
2030	1,096,020	5,488,460

Source: US Census Bureau

## Employers by Size of Establishment

Employees	Central SC Alliance	South Carolina
0 to 4	12,194	79,582
5 to 9	3,698	20,165
10 to 19	2,925	15,299
20 to 49	2,218	11,617
50 to 99	828	4,503
100 to 249	448	2,790
250 to 499	112	854
500 to 999	48	391
1000 +	38	304

## Employment by Size of Establishment

Employees	Central SC Alliance	South Carolina
0 to 4	18,660	112,852
5 to 9	24,800	134,677
10 to 19	39,579	207,583
20 to 49	68,032	354,792
50 to 99	56,666	310,957
100 to 249	66,566	422,086
250 to 499	38,110	293,191
500 to 999	30,819	263,096
1000 +	82,261	764,813

Source: SC Department of Employment & Workforce - Q1 2018

## 20 Largestest Employers

(Listed Alphabetically)

### Corporation Name

PALMETTO HEALTH

UNIVERSITY OF SOUTH CAROLINA

BLUE CROSS BLUE SHIELD OF SC

LEXINGTON COUNTY HEALTH SERVICE DIS

WAL-MART ASSOCIATES INC

RICHLAND COUNTY SCHOOL DISTRICT #1

RICHLAND COUNTY SCHOOL DISTRICT 2

LEXINGTON COUNTY SCHOOL DISTRICT 1

SC DEPARTMENT OF CORRECTIONS

DEPARTMENT OF DEFENSE

WJBD VA MEDICAL CENTER

AMAZON COM DEDC LLC

LEXINGTON COUNTY SCHOOL DISTRICT 5

SC DEPARTMENT OF MENTAL HEALTH

KRAFT FOODS NORTH AMERICA

MICHELIN NORTH AMERICA INC

CITY OF COLUMBIA

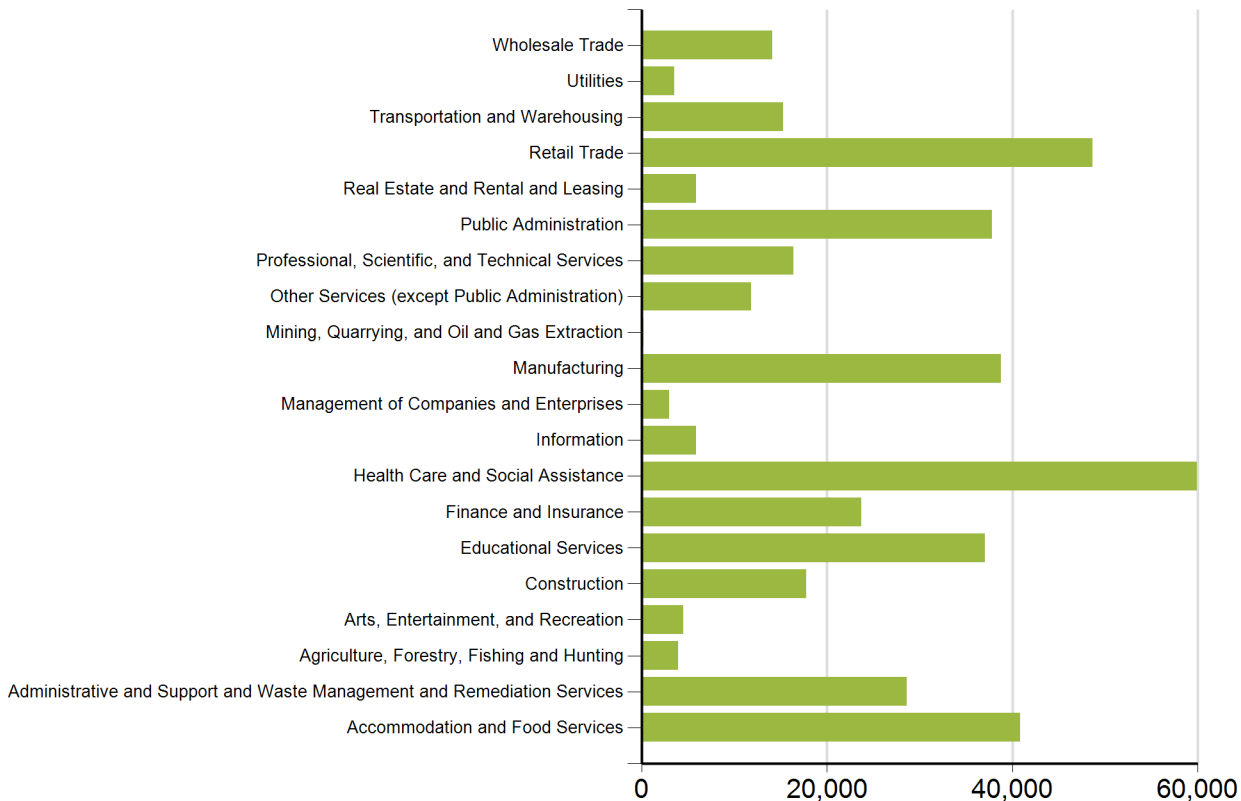
RICHLAND COUNTY

US POSTAL SERVICE

SC HEALTH & ENVIRONMENTAL CONTROL

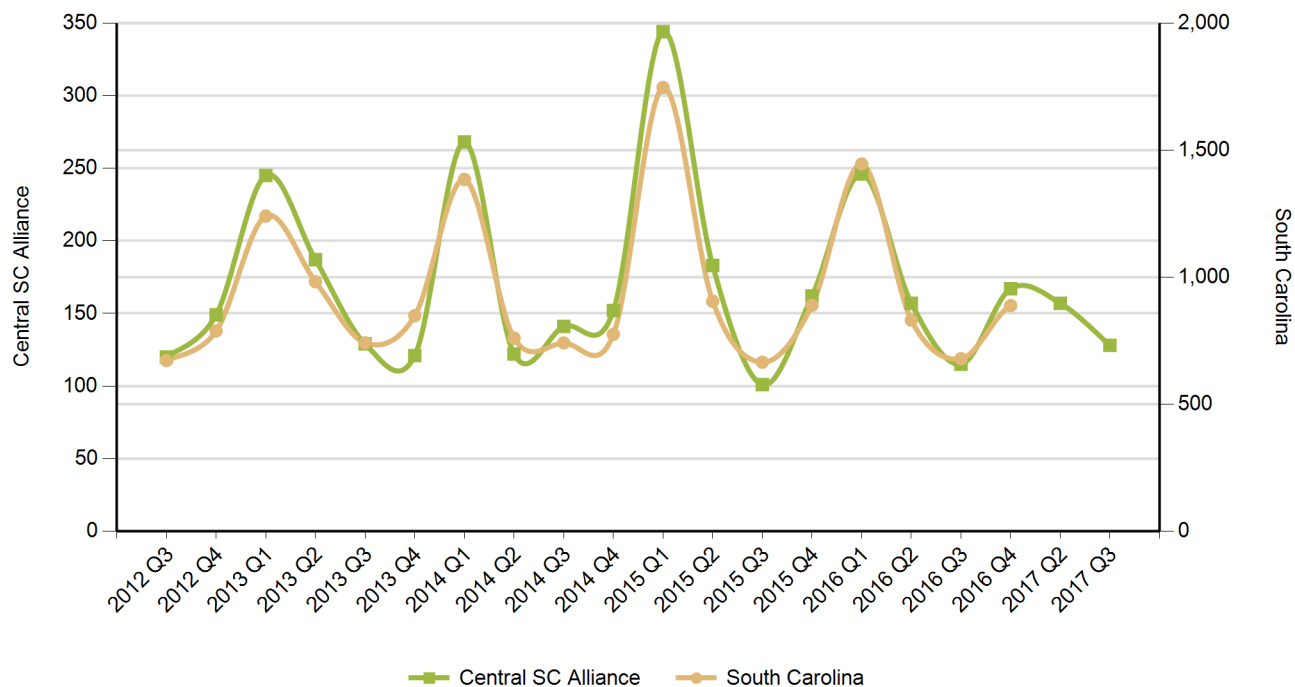
*Source: SC Department of Employment & Workforce - Q1 2018*

## Employment by Industry



Source: SC Department of Employment & Workforce  
 Quarterly Census of Employment and Wages (QCEW) - Q1 2018

### New Startup Firms



Quarter	Central SC Alliance	South Carolina
2017 Q3	128	
2017 Q2	157	
2016 Q4	167	888
2016 Q3	115	679
2016 Q2	157	831
2016 Q1	246	1,445
2015 Q4	162	889
2015 Q3	101	665
2015 Q2	183	905
2015 Q1	344	1,746
2014 Q4	152	775
2014 Q3	141	741
2014 Q2	122	760
2014 Q1	268	1,384
2013 Q4	121	848
2013 Q3	129	741
2013 Q2	187	982
2013 Q1	245	1,240
2012 Q4	149	788
2012 Q3	120	672

*Note: A firm is included in the count when it does not have a UI Account Number in the previous quarter and has a Setup Date that falls in the quarter displayed.  
Source: SC Department of Employment & Workforce*



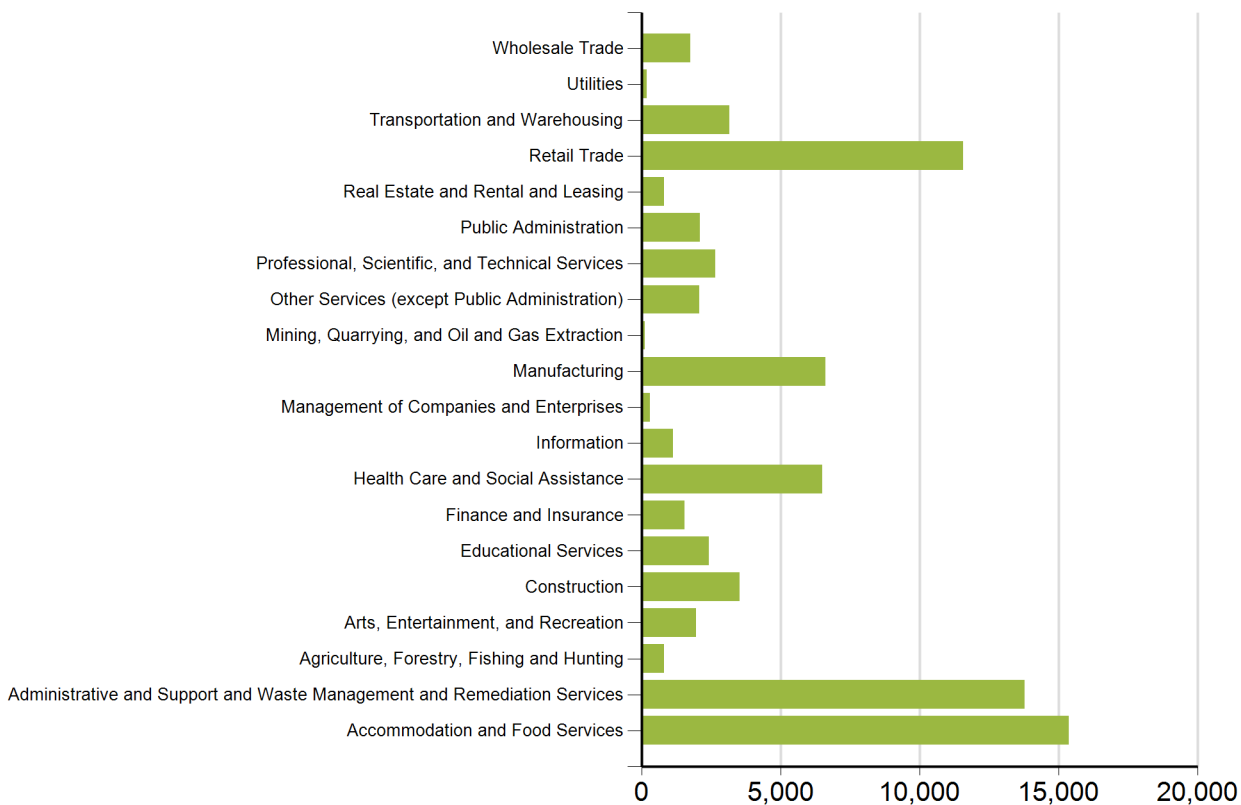
## Top 20 Occupational Openings

April 2016

Occupation Name (Soccode)	Job Opening
Registered Nurses (29-1141)	1,555
Heavy and Tractor-Trailer Truck Drivers (53-3032)	595
First-Line Supervisors of Retail Sales Workers (41-1011)	274
Retail Salespersons (41-2031)	269
Customer Service Representatives (43-4051)	257
Maintenance and Repair Workers, General (49-9071)	242
First-Line Supervisors of Food Preparation and Serving Workers (35-1012)	220
Medical Assistants (31-9092)	210
Social and Human Service Assistants (21-1093)	201
First-Line Supervisors of Office and Administrative Support Workers (43-1011)	193
First-Line Supervisors of Production and Operating Workers (51-1011)	191
Medical and Health Services Managers (11-9111)	173
Licensed Practical and Licensed Vocational Nurses (29-2061)	158
Physical Therapists (29-1123)	158
Accountants and Auditors (13-2011)	143
Sales Representatives, Wholesale and Manufacturing, Except Technical and Scientific Products (41-4012)	140
Executive Secretaries and Executive Administrative Assistants (43-6011)	138
First-Line Supervisors of Mechanics, Installers, and Repairers (49-1011)	125
Automotive Service Technicians and Mechanics (49-3023)	122
Light Truck Drivers (53-3033)	121

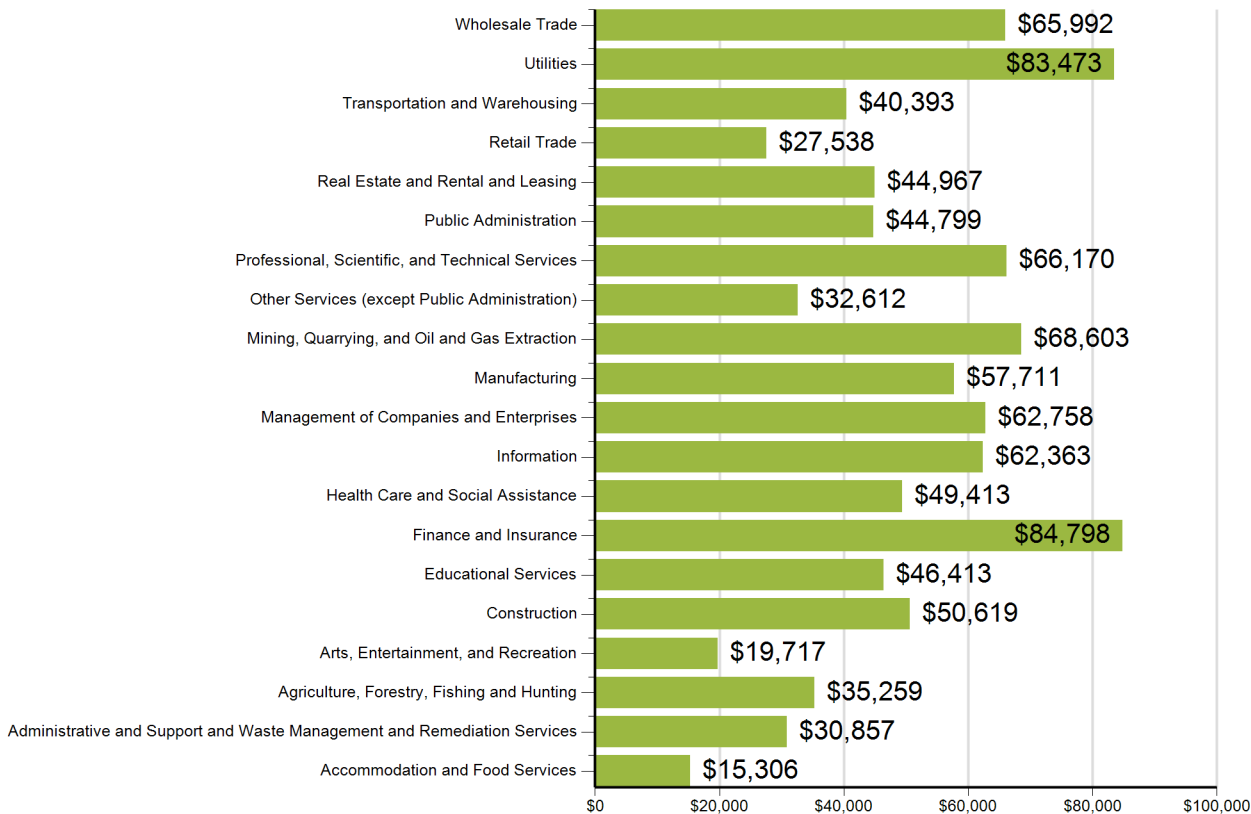
Source: SC Department of Employment & Workforce and The Conference Board's Help Wanted OnLine® Data Series

### New Hires by Industry



US Census Bureau, Local Employment Dynamics - Q2 2016

### Average Annual Wage by Industry



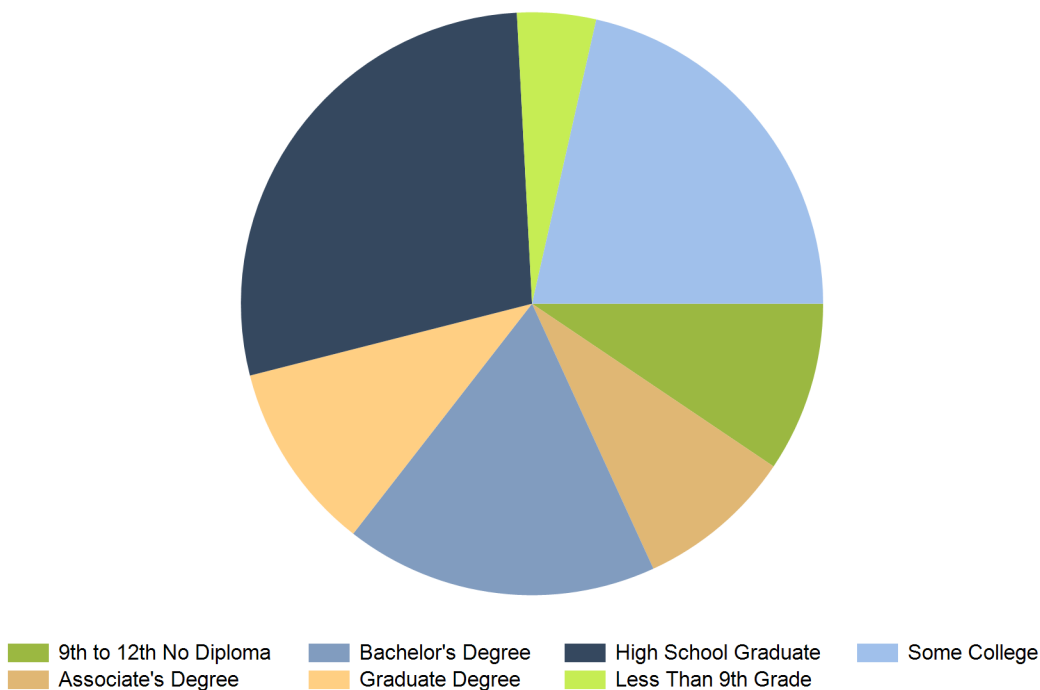
Source: SC Department of Employment & Workforce  
 Quarterly Census of Employment and Wages (QCEW) - Q1  
 2018

## Age of Workers by Industry

Industry	14-18	19-21	22-24	25-34	35-44	45-54	55-64	65+
Total, All Industries	8,005	18,206	25,982	95,600	92,694	96,246	73,916	23,734
Agriculture, Forestry, Fishing and Hunting	28	108	155	675	768	804	719	330
Mining, Quarrying, and Oil and Gas Extraction	0	7	28	87	74	135	117	19
Utilities	0	28	106	944	1,100	1,400	1,197	165
Construction	111	541	872	3,511	3,904	4,051	2,787	883
Manufacturing	80	709	1,590	7,657	9,223	10,680	8,100	1,448
Wholesale Trade	42	262	643	3,382	4,165	4,372	3,157	932
Retail Trade	1,740	4,524	4,932	12,205	8,812	8,729	6,859	3,037
Transportation and Warehousing	29	532	920	3,170	2,973	3,302	2,143	584
Information	46	137	296	1,470	1,512	1,497	1,261	334
Finance and Insurance	17	212	772	5,424	6,937	6,733	4,858	1,126
Real Estate and Rental and Leasing	10	153	377	1,351	1,167	1,223	993	480
Professional and Technical Services	99	467	1,011	4,327	4,078	4,002	3,248	1,289
Management of Companies and Enterprises	35	89	171	778	755	726	526	133
Administrative and Waste Services	156	1,514	2,633	8,543	6,539	6,320	4,436	1,665
Educational Services	179	438	1,239	7,529	9,939	10,628	9,109	3,300
Health Care and Social Assistance	129	942	2,489	13,176	13,411	13,466	10,375	3,150
Arts, Entertainment, and Recreation	217	396	417	973	694	692	573	356
Accommodation and Food Services	4,733	5,994	5,125	10,151	6,124	4,957	3,093	1,131
Other Services, Except Public Administration	235	569	798	2,669	2,370	2,405	2,007	1,023
Public Administration	50	531	1,365	7,481	8,047	9,997	8,250	2,299

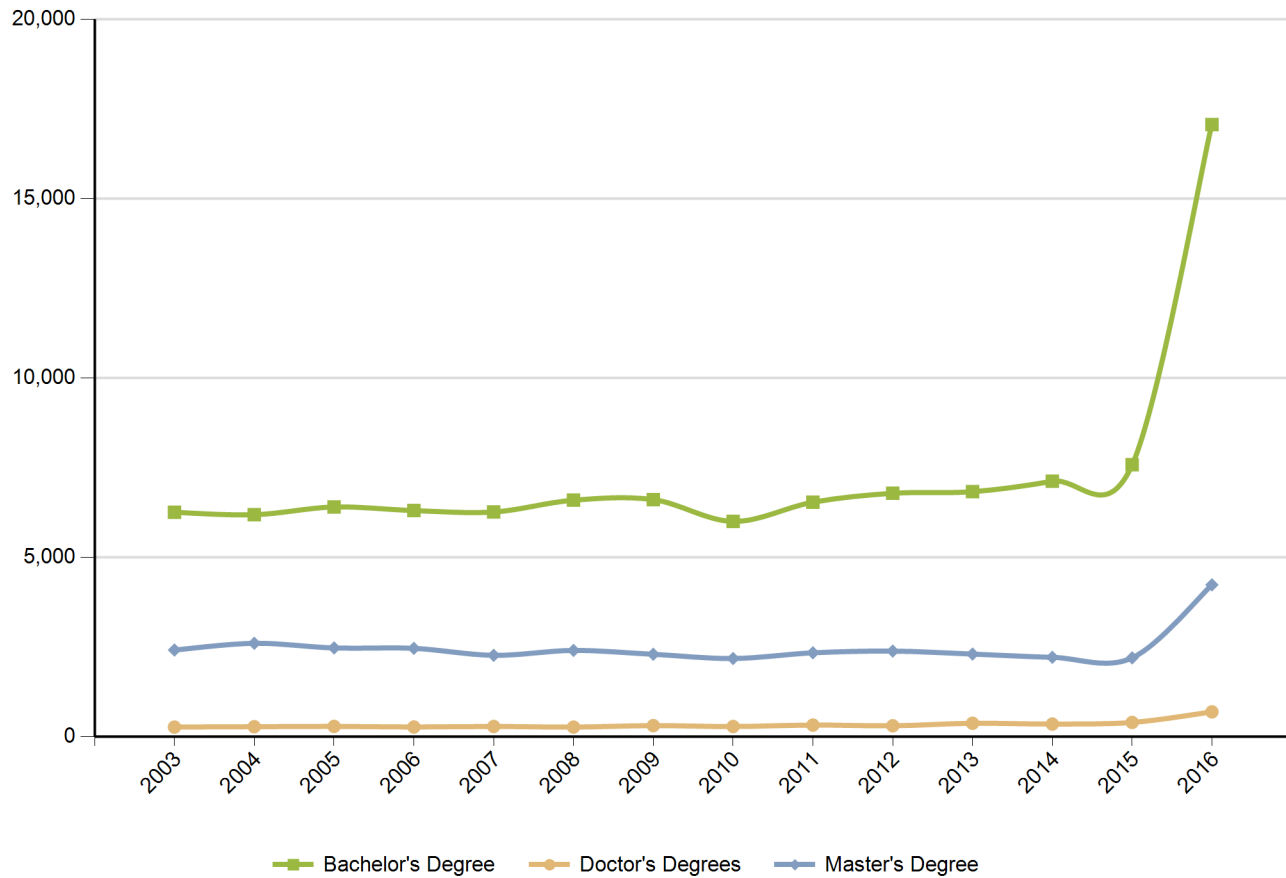
Source: US Census Bureau, Local Employment Dynamics - Q2 2016

### Educational Attainment (Population 25 Years and Older)



Source: US Census Bureau, American Community Survey - 2013 5-Year Estimates

### Graduate Trends



Source: Institute of Education Sciences (IES), Integrated Postsecondary Education Data System

## Educational Institutions

Allen University  
1530 Harden Street

Columbia, SC 29204  
803.376.5700  
<http://www.allenuniversity.edu/>  
2016 Degrees Awarded: 144

Benedict College  
1600 Harden Street

Columbia, SC 29204  
803.256.4220  
<http://www.benedict.edu>  
2016 Degrees Awarded: 770

Clafin University  
400 Magnolia Street

Orangeburg, SC 29115  
803.535.5000  
<http://www.clafin.edu>  
2016 Degrees Awarded: 762

Columbia College  
1301 Columbia College Dr

Columbia, SC 29203  
803.786.3012  
<http://www.columbiasc.edu/>  
2016 Degrees Awarded: 726

Construction Training Center  
7355 Garners Ferry Road

Columbia, SC 29209  
803.403.1990  
<http://www.constructiontrainingcenter.org>  
2016 Degrees Awarded: 76

Kenneth Shuler School of Cosmetology and Nails-  
Columbia  
449 Saint Andrews Rd

Columbia, SC 29210  
803.772.6042  
<http://www.kennethshuler.com>  
2016 Degrees Awarded: 100

LeGrand Institute of Cosmetology Inc  
2418 Broad St

Camden, SC 29020  
803.425.8449  
<http://www.legrandinstitute.com>  
2016 Degrees Awarded: 20

Barber Tech Academy  
1521 Russell Street

Orangeburg, SC 29115  
803.937.5730  
<http://www.barbertechacademy.com>  
2016 Degrees Awarded: 4

Centura College-Columbia  
7500 Two Notch Road

Columbia, SC 29223  
803.754.7544  
<http://www.centuracollege.edu>  
2016 Degrees Awarded: 286

Columbia Academy of Cosmetology  
1221 Sunset Boulevard

West Columbia, SC 29169  
803.796.9986  
<http://columbiaacademyofcosmetology.com>  
2016 Degrees Awarded: 36

Columbia International University  
7435 Monticello Rd

Columbia, SC 29203  
800.777.2227  
<http://www.ciu.edu>  
2016 Degrees Awarded: 790

Fortis College-Columbia  
246 Stoneridge Dr Ste 101

Columbia, SC 29210  
803.678.4800  
<http://www.fortis.edu/>  
2016 Degrees Awarded: 466

Kenneth Shuler School of Cosmetology-Columbia  
7474 Garners Ferry Road

Columbia, SC 29209  
803.776.9100  
<http://www.kennethshuler.com>  
2016 Degrees Awarded: 106

Midlands Technical College  
1260 Lexington Drive

West Columbia, SC 29170  
803.738.8324  
<http://https://www.midlandstech.edu>  
2016 Degrees Awarded: 3954

Newberry College  
2100 College St

Newberry, SC 29108  
803.276.5010  
<http://www.newberry.edu>  
2016 Degrees Awarded: 420

Paul Mitchell the School-Columbia  
700 Gervais Street Suite D

Columbia, SC 29201  
803.772.2232  
<http://paulmitchell.edu/columbia>  
2016 Degrees Awarded: 154

South Carolina State University  
300 College St NE

Orangeburg, SC 29117  
803.536.7000  
<http://www.scsu.edu>  
2016 Degrees Awarded: 1158

Southeastern Institute-Columbia  
1420 Colonial Life Blvd, Suite 80

Columbia, SC 29210  
803.798.8800  
<http://www.southeasterninstitute.com>  
2016 Degrees Awarded: 258

University of South Carolina-Columbia  
Columbia-Campus

Columbia, SC 29208  
803.777.7000  
<http://www.sc.edu/>  
2016 Degrees Awarded: 17842

W L Bonner College  
4430 Argent Ct

Columbia, SC 29203  
803.726.3503  
<http://www.wlbc.edu>  
2016 Degrees Awarded: 16

Orangeburg Calhoun Technical College  
3250 Saint Matthews Rd

Orangeburg, SC 29118  
803.536.0311  
<http://www.octech.edu>  
2016 Degrees Awarded: 2014

Remington College-Columbia Campus  
607 Bush River Rd

Columbia, SC 29210  
803.214.9000  
<http://www.remingtoncollege.edu/columbia-south-carolina-technical-college>  
2016 Degrees Awarded: 328

South University-Columbia  
9 Science Court

Columbia, SC 29203  
803.799.9082  
<http://www.southuniversity.edu/columbia#location=Columbia,%20SC>  
2016 Degrees Awarded: 756

University of Phoenix-South Carolina  
1001 Pinnacle Point Dr

Columbia, SC 29223  
866.766.0766  
<http://www.phoenix.edu>  
2016 Degrees Awarded: 242

Virginia College-Columbia  
7201 Two Notch Rd

Columbia, SC 29223  
803.509.7100  
<http://www.vc.edu>  
2016 Degrees Awarded: 514

*Source: Institute of Education Sciences (IES), Integrated Postsecondary Education Data System*