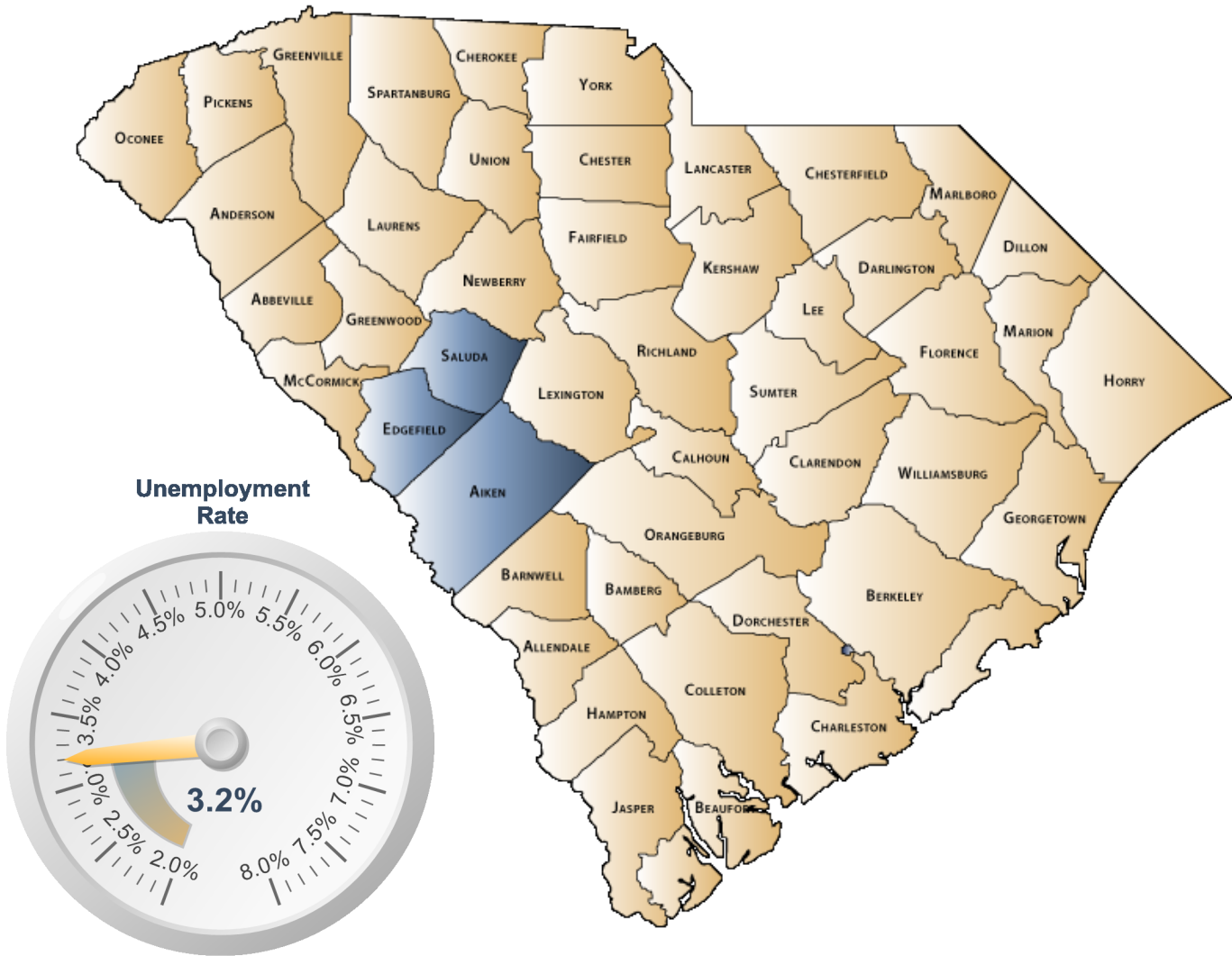


# ECONOMIC PROFILE

Economic Development Partnership



**S.C. Department of Employment & Workforce**  
Labor Market Information

1550 Gadsden Street, PO Box 995  
Columbia, SC 29202  
803-737-2660

[www.SCWorkforceInfo.com](http://www.SCWorkforceInfo.com)

<http://www.EDPSC.org/>

Updated: 11/19/2018

## Table of Contents

### 1. Economic Data

Annual Unemployment Rates.....	3
Monthly Unemployment Rates.....	4
Area Job Openings.....	5
Unemployment Insurance	
Demographic Data.....	6
Industry Data.....	7
Occupation Data.....	8
Retail Sales.....	9

### 2. Demographic Data

Population	
Age.....	10
Race.....	11
Gender.....	11
Change.....	12
Employer Data	
Size of Establishments.....	13
Employment by Size of Establishment.....	13
20 Largest Employers.....	14

### 3. Industry Data

Employment by Industry.....	15
New Startup Firms.....	16
Top Occupational Openings.....	17
New Hires by Industry.....	18
Average Annual Wage by Industry.....	19
Age of Workers by Industry.....	20

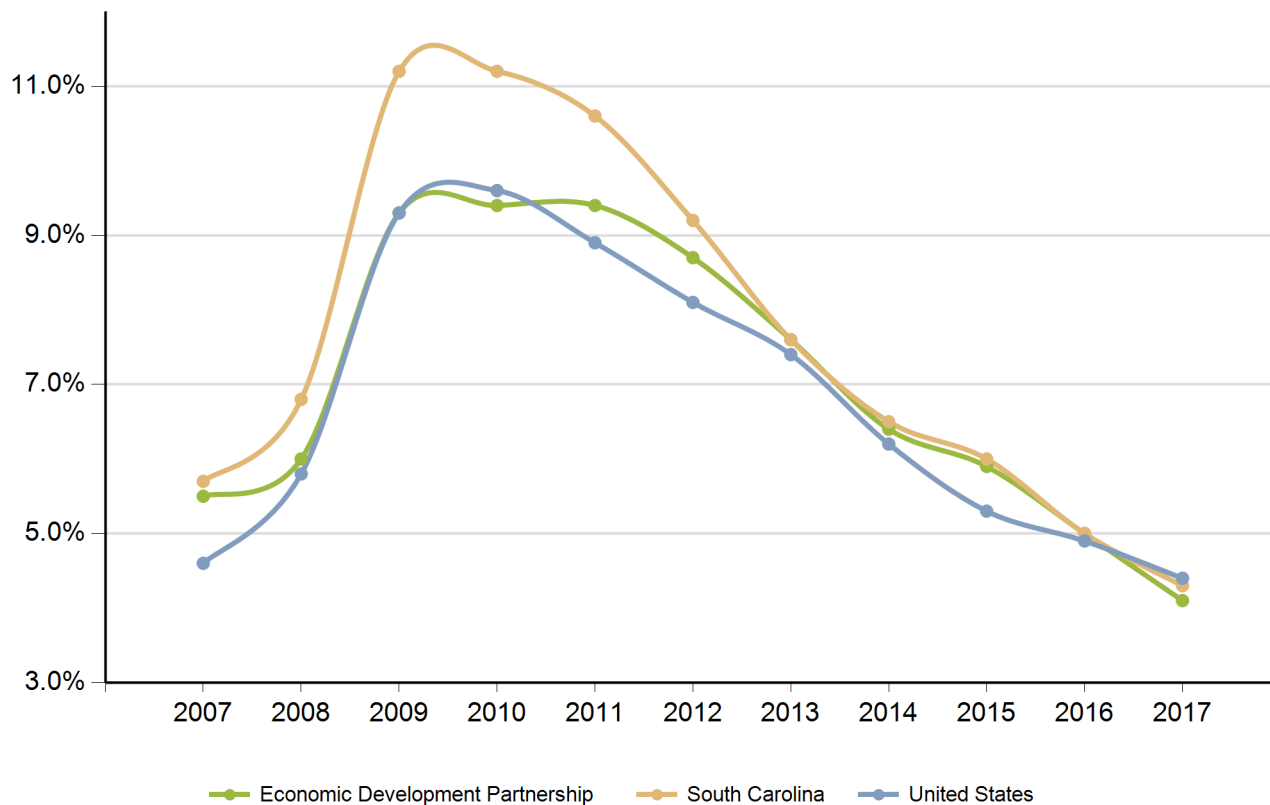
### 4. Education Data

Educational Attainment.....	21
Graduate Trends.....	22
Educational Institutions.....	23

**\*Disclaimer: All data provided is an aggregate of the counties' data that comprise the Economic Development Partnership**

### Annual Unemployment Rate (Unadjusted)

*Trends*

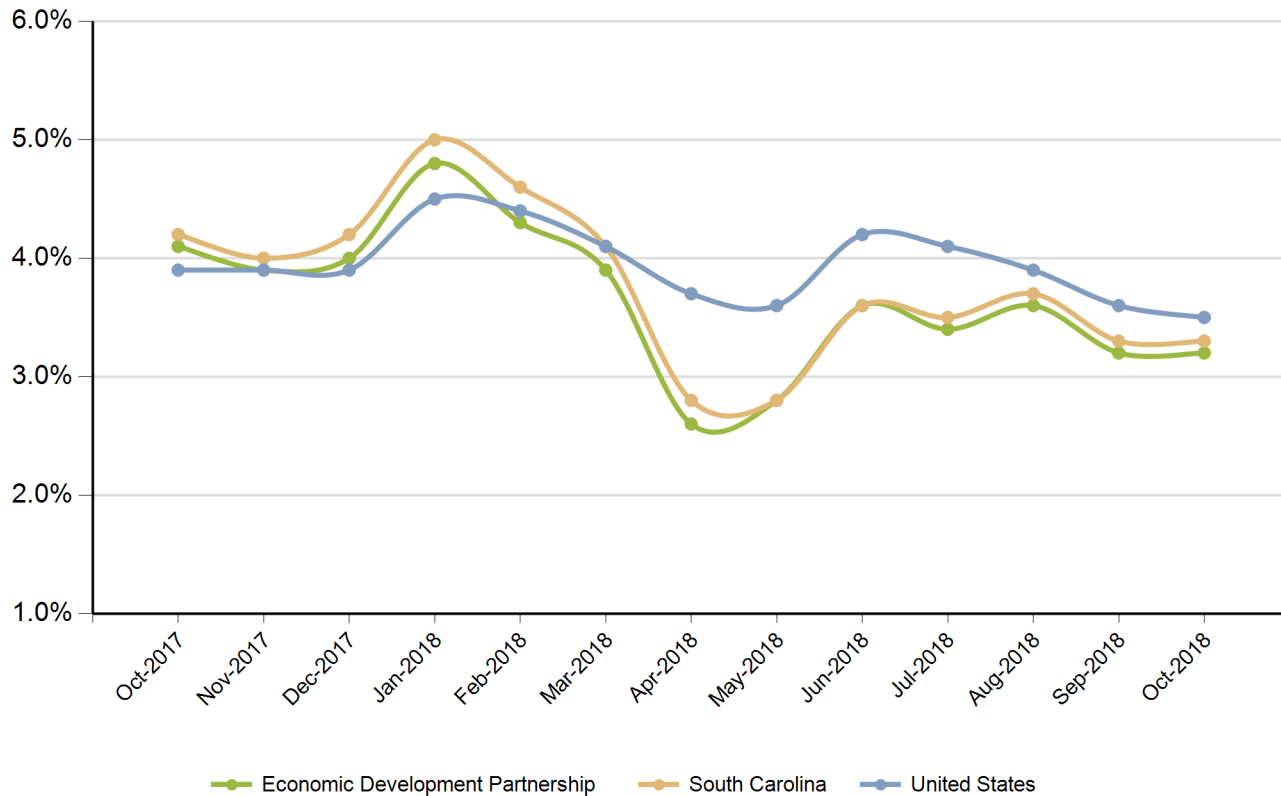


Year	Economic Development Partnership			South Carolina			United States		
	Employed	Unemployed	Unemp Rate	Employed	Unemployed	Unemp Rate	Employed	Unemployed	Unemp Rate
2007	89,484	5,179	5.5%	2,005,686	120,205	5.7%	146,047,000	7,078,000	4.6%
2008	89,108	5,652	6.0%	1,996,409	145,823	6.8%	145,362,000	8,924,000	5.8%
2009	87,713	9,041	9.3%	1,910,670	242,075	11.2%	139,877,000	14,265,000	9.3%
2010	83,345	8,693	9.4%	1,915,045	240,623	11.2%	139,064,000	14,825,000	9.6%
2011	84,159	8,729	9.4%	1,945,900	229,623	10.6%	139,869,000	13,747,000	8.9%
2012	84,186	8,008	8.7%	1,985,618	201,260	9.2%	142,469,000	12,506,000	8.1%
2013	84,820	6,927	7.6%	2,023,642	167,326	7.6%	143,929,000	11,460,000	7.4%
2014	86,237	5,945	6.4%	2,079,565	143,413	6.5%	146,305,000	9,617,000	6.2%
2015	87,936	5,487	5.9%	2,134,244	135,095	6.0%	148,834,000	8,296,000	5.3%
2016	88,912	4,689	5.0%	2,179,521	114,145	5.0%	151,436,000	7,751,000	4.9%
2017	89,968	3,885	4.1%	2,213,894	98,757	4.3%	153,337,000	6,982,000	4.4%

Source: SC Department of Employment & Workforce

## Monthly Unemployment Rate (Unadjusted)

Past 13 Months



Period	Economic Development Partnership	South Carolina	United States
Oct-2017	4.1%	4.2%	3.9%
Nov-2017	3.9%	4.0%	3.9%
Dec-2017	4.0%	4.2%	3.9%
Jan-2018	4.8%	5.0%	4.5%
Feb-2018	4.3%	4.6%	4.4%
Mar-2018	3.9%	4.1%	4.1%
Apr-2018	2.6%	2.8%	3.7%
May-2018	2.8%	2.8%	3.6%
Jun-2018	3.6%	3.6%	4.2%
Jul-2018	3.4%	3.5%	4.1%
Aug-2018	3.6%	3.7%	3.9%
Sep-2018	3.2%	3.3%	3.6%
Oct-2018	3.2%	3.3%	3.5%

Source: SC Department of Employment & Workforce

## Area Job Openings

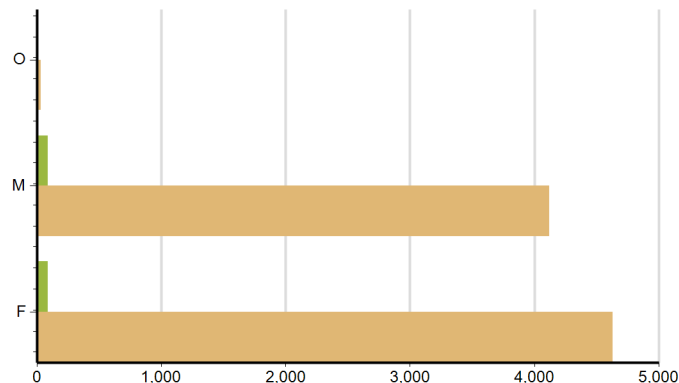
Period	Economic Development Partnership				South Carolina			
	Employed	Unemployed	Unemp Rate	Job Openings	Employed	Unemployed	Unemp Rate	Job Openings
Oct-2017	90,151	3,829	4.1%	1,640	2,221,475	97,934	4.2%	57,940
Nov-2017	90,203	3,672	3.9%	1,543	2,221,189	97,944	4.2%	60,228
Dec-2017	90,902	3,763	4.0%	1,591	2,220,845	97,879	4.2%	56,028
Jan-2018	91,162	4,548	4.8%	1,385	2,221,051	100,182	4.3%	51,746
Feb-2018	91,492	4,145	4.3%	1,345	2,223,397	101,415	4.4%	57,596
Mar-2018	91,351	3,745	3.9%	1,637	2,225,252	102,079	4.4%	59,107
Apr-2018	92,413	2,490	2.6%	1,938	2,225,655	97,929	4.2%	64,770
May-2018	91,229	2,601	2.8%	1,687	2,225,414	92,505	4.0%	61,940
Jun-2018	91,456	3,367	3.6%	1,813	2,225,973	87,096	3.8%	57,230
Jul-2018	91,807	3,255	3.4%	1,884	2,227,550	82,339	3.6%	62,943
Aug-2018	90,297	3,396	3.6%	2,052	2,227,762	78,758	3.4%	63,496
Sep-2018	90,532	3,032	3.2%	1,703	2,227,597	76,741	3.3%	61,190
Oct-2018	90,796	3,032	3.2%	1,808	2,231,027	76,220	3.3%	55,358

Source: SC Department of Employment & Workforce, The Conference Board's Help Wanted OnLine® Data Series  
South Carolina Data is Seasonally Adjusted

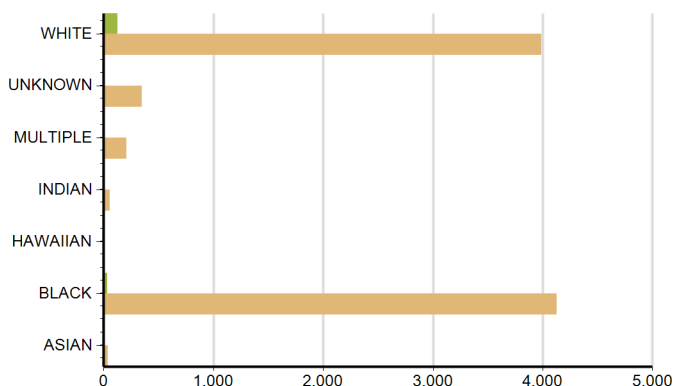
## Characteristics of Unemployment Insurance Claimants

October-2018

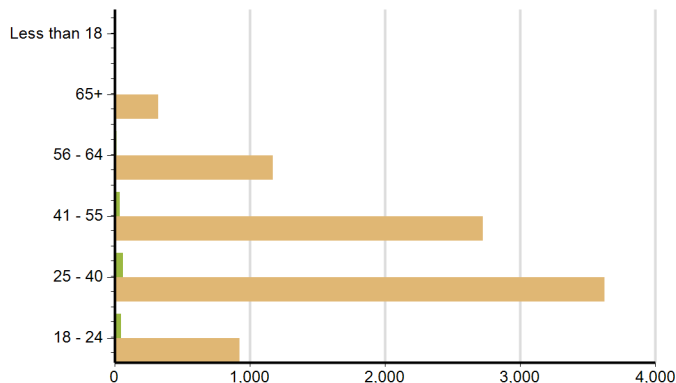
Gender	Economic Development Partnership	South Carolina
Male	88	4,121
Female	1	33
Female	88	4,628



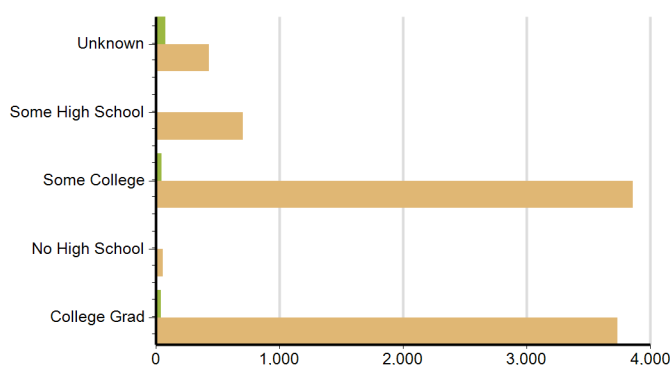
Race	Economic Development Partnership	South Carolina
BLACK	34	4,130
HAWAIIAN	1	11
WHITE	124	3,991
UNKNOWN	7	349
MULTIPLE	11	210



Age Group	Economic Development Partnership	South Carolina
18 - 24	51	925
25 - 40	65	3,626
56 - 64	16	1,170
41 - 55	40	2,723
65+	5	325



Education	Economic Development Partnership	South Carolina
Unknown	80	429
Some High School	9	702
College Grad	39	3,734
No High School	2	57
Some College	47	3,860

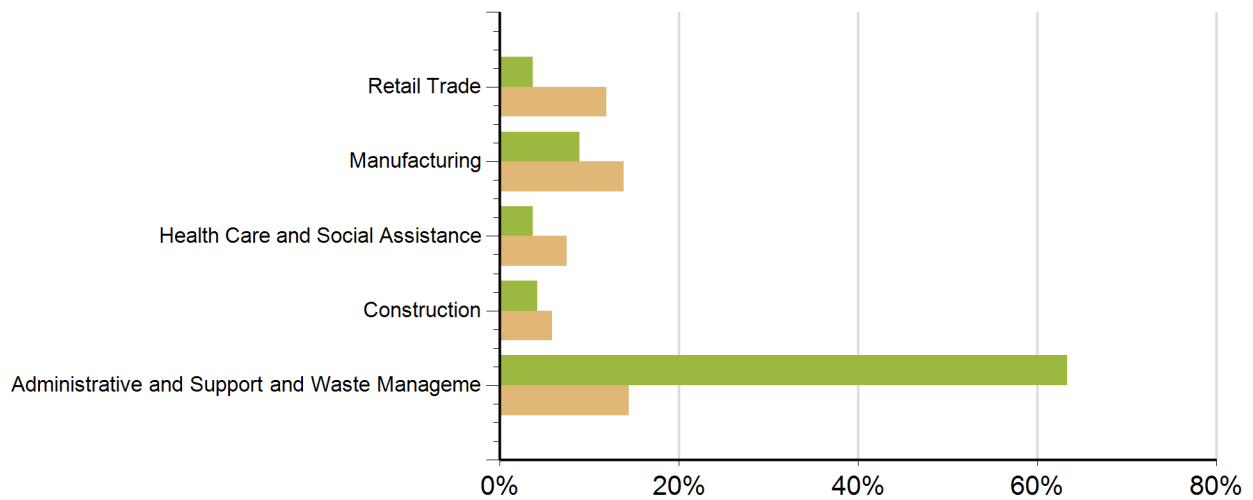


Source: SC Department of Employment & Workforce

## Characteristics of Unemployment Insurance Claims by Industry

Industry Groups with Largest Number of Claims

October-2018



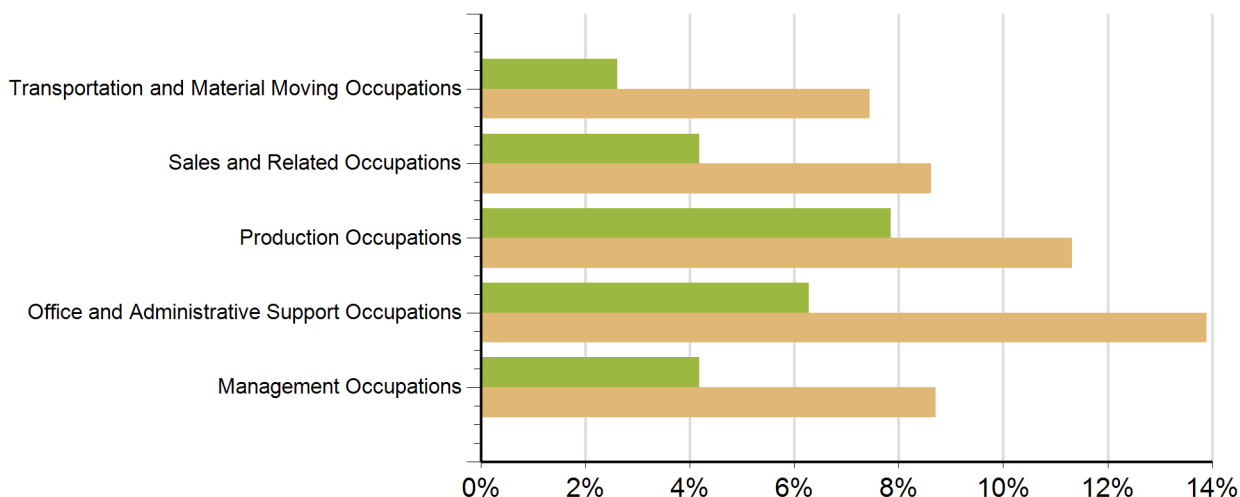
Industry	Economic Development Partnership	South Carolina
Other Services (except Public Administration)	4	152
Educational Services	3	158
Manufacturing	17	1,224
Accommodation and Food Services	6	1,131
Agriculture, Forestry, Fishing and Hunting	1	70
Construction	8	516
Real Estate and Rental and Leasing	1	204
Professional, Scientific, and Technical Servi	2	439
Retail Trade	7	1,048
Public Administration	4	151
Arts, Entertainment, and Recreation	2	129
Administrative and Support and Waste Manageme	121	1,270
Unknown	7	789
Health Care and Social Assistance	7	659
Wholesale Trade	1	309

Source: SC Department of Employment & Workforce

## Characteristics of Unemployment Insurance Claims by Occupation

Occupation Groups with Largest Number of Claims

October-2018

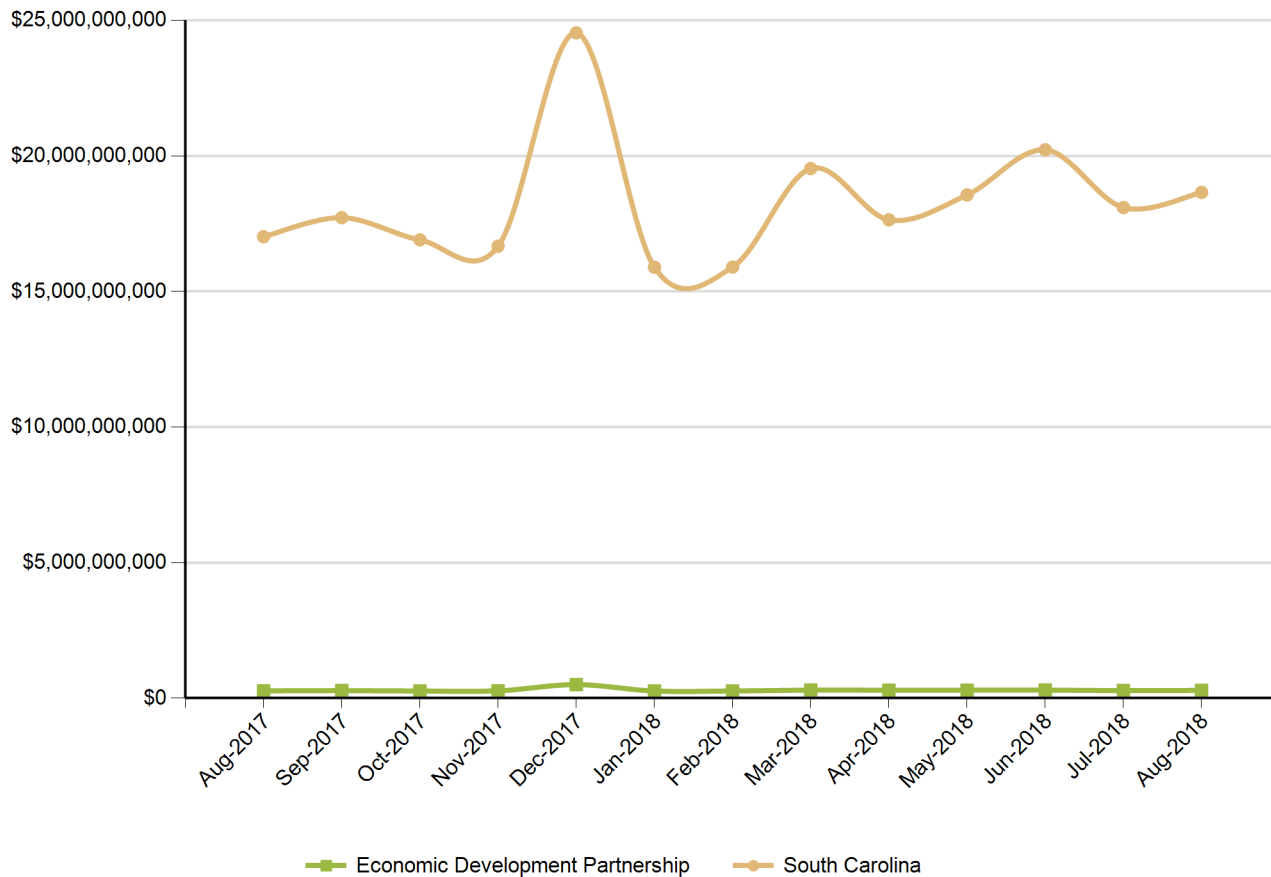


Occupation	Economic Development Partnership	South Carolina
Architecture and Engineering Occupations	4	215
Arts, Design, Entertainment, Sports, and Media Occ	1	90
Building and Grounds Cleaning and Maintenance Occu	4	403
Business and Financial Operations Occupations	2	260
Community and Social Service Occupations	1	62
Computer and Mathematical Occupations	2	137
Construction and Extraction Occupations	3	430
Farming, Fishing, and Forestry Occupations	1	55
Food Preparation and Serving Related Occupations	3	744
Healthcare Practitioners and Technical Occupations	4	206
Healthcare Support Occupations	1	237
Installation, Maintenance, and Repair Occupations	4	371
Management Occupations	8	769
Office and Administrative Support Occupations	12	1,226
Personal Care and Service Occupations	1	127
Production Occupations	15	999
Protective Service Occupations	3	102
Sales and Related Occupations	8	761
Transportation and Material Moving Occupations	5	657
Unknown	109	718

Source: SC Department of Employment & Workforce



### Retail Sales



Source: SC Department of Revenue

### Population by Age



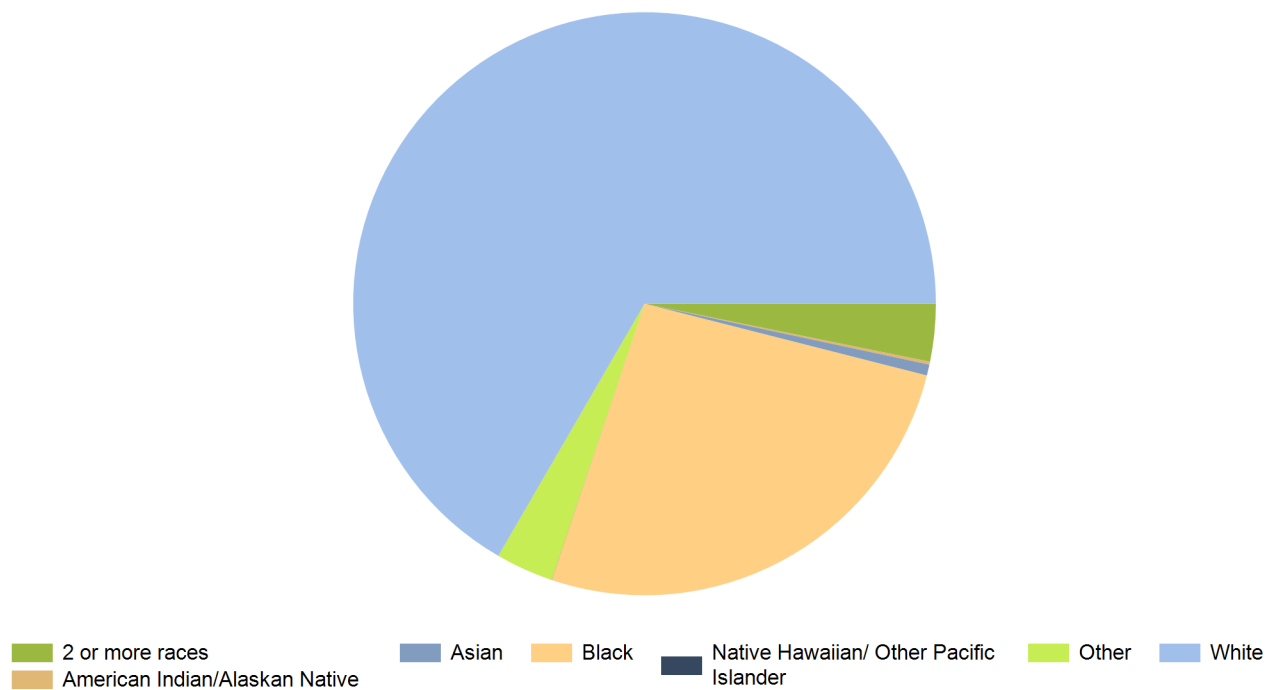
Age Range	Economic Development Partnership	South Carolina	United States
0-4	12,546	298,242	20,052,112
5-9	12,986	302,111	20,409,060
10-14	13,225	297,443	20,672,609
15-19	13,541	321,540	21,715,074
20-24	12,908	342,237	22,099,887
25-29	13,063	305,167	21,243,365
30-34	12,542	293,464	20,467,912
35-39	12,025	291,183	19,876,161
40-44	13,596	308,158	20,998,001
45-49	14,691	325,660	22,109,946
50-54	15,785	329,431	22,396,322
55-59	14,925	309,061	20,165,892
60-64	13,703	289,690	17,479,211
65-69	10,816	229,251	13,189,508
70-74	8,349	165,797	9,767,522
75-79	5,746	117,187	7,438,750
80-84	4,427	82,223	5,781,697
85 and older	3,429	71,757	5,673,565

Source: US Census Bureau, American Community Survey

## Population by Race

Race	Economic Development Partnership	%	South Carolina	%	United States	%
White	141,039	66.6%	3,144,146	66.0%	230,592,579	72.0%
Black	55,469	26.2%	1,298,534	27.3%	39,167,010	12.2%
American Indian/Alaskan Native	344	0.2%	14,732	0.3%	2,540,309	0.8%
Asian	1,286	0.6%	61,097	1.3%	15,231,962	4.8%
Native Hawaiian/ Other Pacific Islander	21	0.0%	2,128	0.0%	526,347	0.2%
2 or more races	6,752	3.2%	169,670	3.6%	17,464,666	5.5%
Other	6,768	3.2%	74,130	1.6%	14,746,054	4.6%

Source: US Census Bureau, American Community Survey



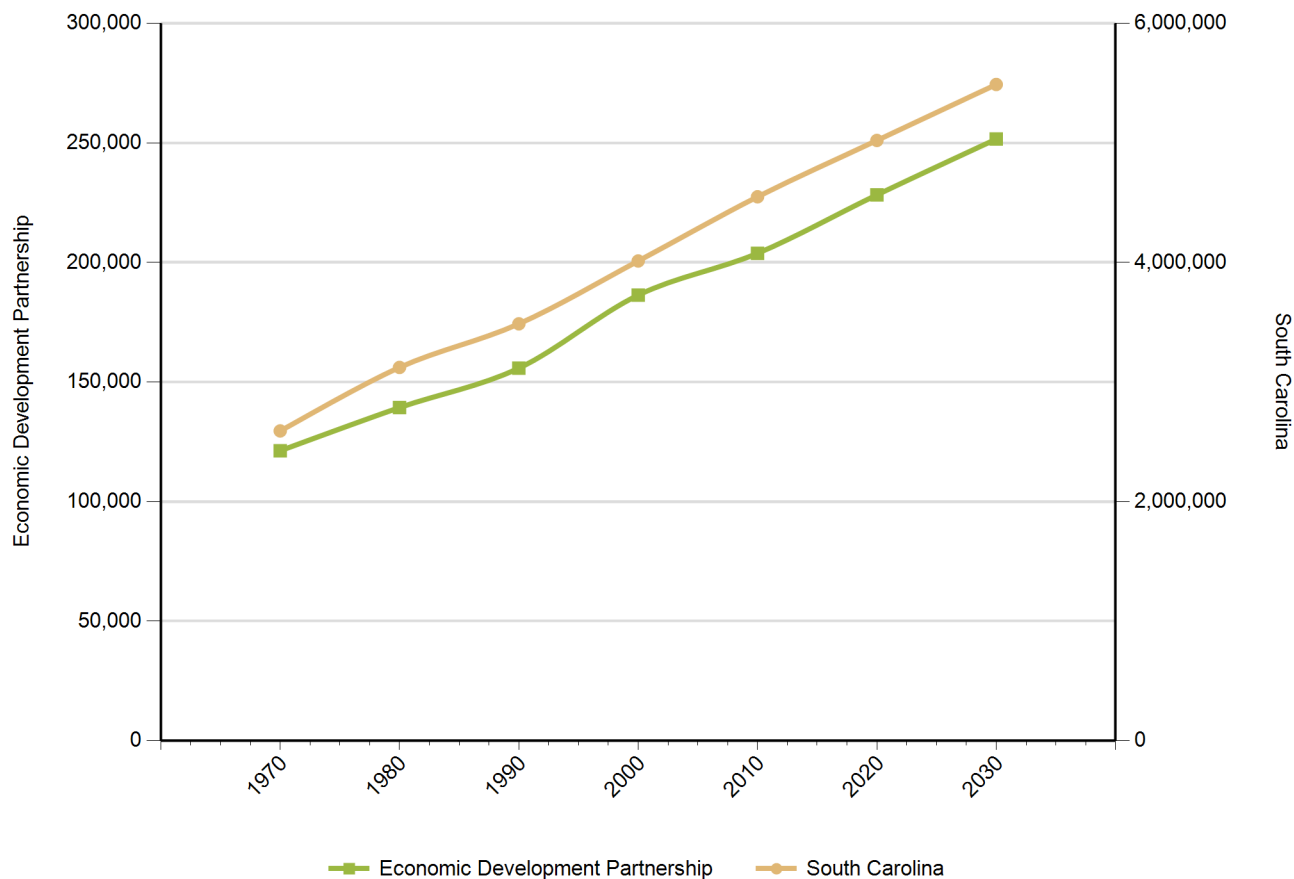
## Population by Gender

Gender	Economic Development Partnership	South Carolina	United States
Female	105,404	2,403,297	158,289,182
Male	102,899	2,276,305	153,247,412

Source: US Census Bureau, American Community Survey

## Population Change

*Historical and Projected*



Year	Economic Development Partnership	South Carolina
1970	121,243	2,590,713
1980	139,299	3,121,820
1990	155,792	3,486,310
2000	186,328	4,012,012
2010	203,830	4,549,150
2020	228,250	5,020,400
2030	251,590	5,488,460

Source: US Census Bureau

## Employers by Size of Establishment

Employees	Economic Development Partnership	South Carolina
0 to 4	1,831	79,582
5 to 9	716	20,165
10 to 19	487	15,299
20 to 49	336	11,617
50 to 99	110	4,503
100 to 249	73	2,790
250 to 499	20	854
500 to 999	6	391
1000 +	9	304

## Employment by Size of Establishment

Employees	Economic Development Partnership	South Carolina
0 to 4	3,084	112,852
5 to 9	4,819	134,677
10 to 19	6,526	207,583
20 to 49	10,159	354,792
50 to 99	7,605	310,957
100 to 249	11,246	422,086
250 to 499	6,398	293,191
500 to 999	3,892	263,096
1000 +	21,632	764,813

Source: SC Department of Employment & Workforce - Q1 2018

## 20 Largestest Employers

(Listed Alphabetically)

### Corporation Name

SAVANNAH RIVER NUCLEAR SOLUTIONS LL

AIKEN COUNTY BOARD OF EDUCATION

SAVANNAH RIVER REMEDIATION LLC

BRIDGESTONE AMERICAS TIRE OPERATION

AMICK FARMS LLC

CB&I PROJECT SERVICES GROUP LLC

WAL-MART ASSOCIATES INC

KIMBERLY CLARK CORPORATION

AIKEN REGIONAL MEDICAL CENTERS INC

COUNTY OF AIKEN

EDWARD D. JONES ET AL.

AGY AIKEN LLC

CENTERRA GROUP LLC

EDGEFIELD COUNTY BOARD OF EDUCATION

UPS CUSTOMHOUSE BROKERAGE INC

UNIVERSITY OF SOUTH CAROLINA

AUSTIN MAINTENANCE & CONSTRUCTION I

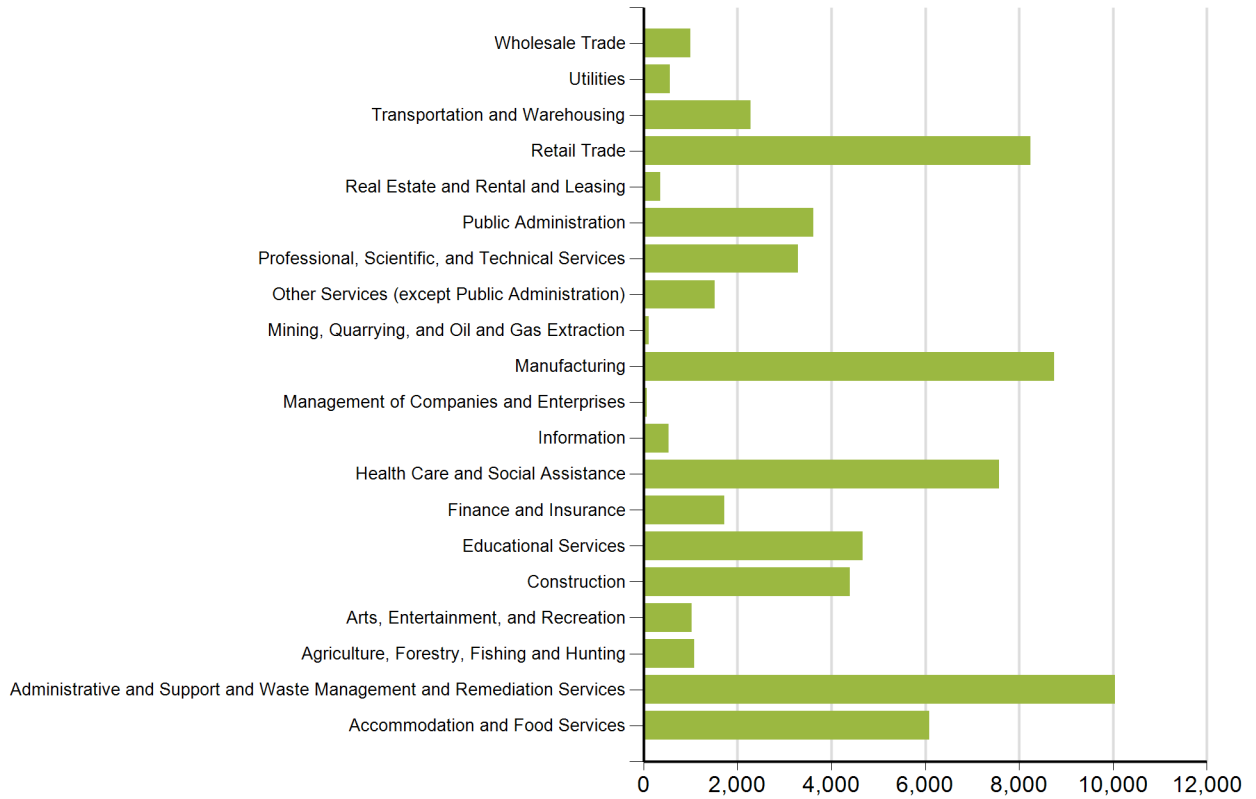
CITY OF AIKEN

ASCO LP

TRI-DEVELOPMENT CENTER OF AIKEN

Source: SC Department of Employment & Workforce - Q1 2018

## Employment by Industry



Source: SC Department of Employment & Workforce  
 Quarterly Census of Employment and Wages (QCEW) - Q1 2018

### New Startup Firms



Quarter	Economic Development Partnership	South Carolina
2017 Q3	17	
2017 Q2	25	
2016 Q4	25	888
2016 Q3	21	679
2016 Q2	17	831
2016 Q1	40	1,445
2015 Q4	30	889
2015 Q3	25	665
2015 Q2	35	905
2015 Q1	61	1,746
2014 Q4	29	775
2014 Q3	20	741
2014 Q2	28	760
2014 Q1	58	1,384
2013 Q4	36	848
2013 Q3	18	741
2013 Q2	34	982
2013 Q1	42	1,240
2012 Q4	14	788
2012 Q3	19	672

*Note: A firm is included in the count when it does not have a UI Account Number in the previous quarter and has a Setup Date that falls in the quarter displayed.  
Source: SC Department of Employment & Workforce*



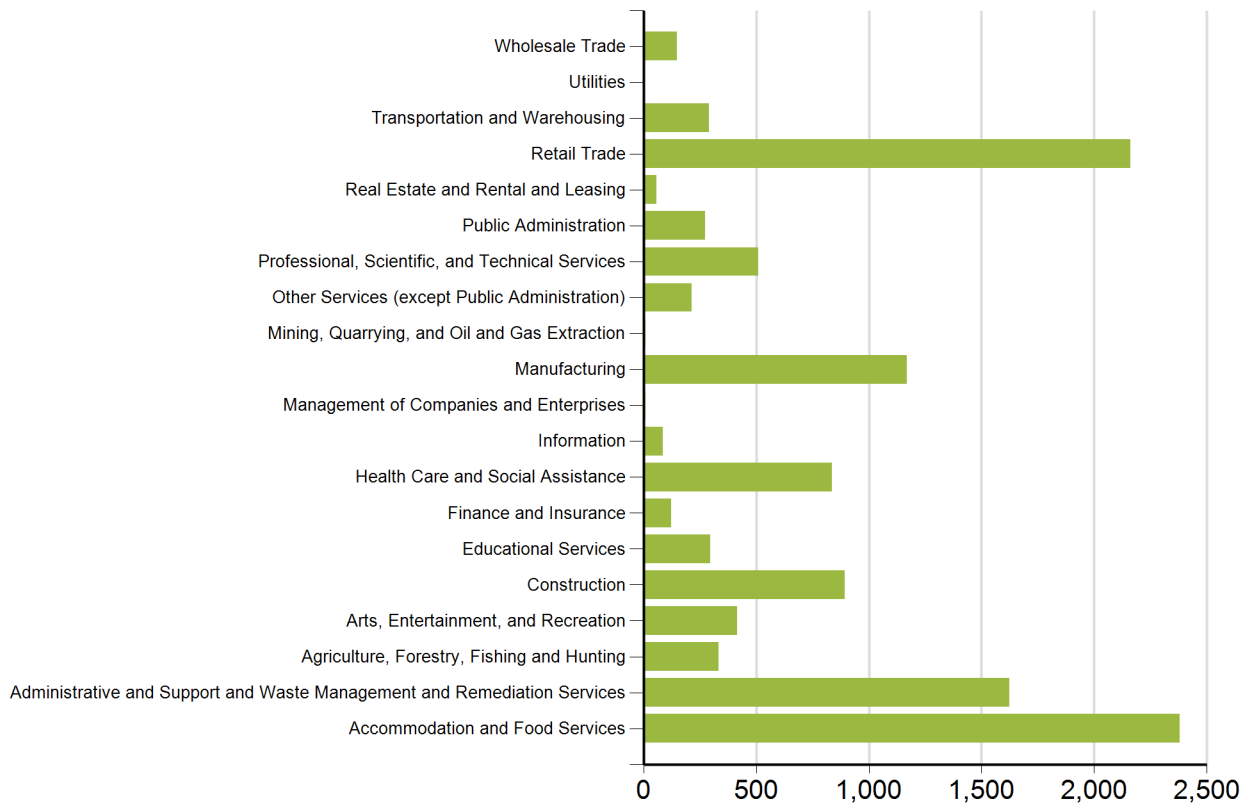
## Top 20 Occupational Openings

April 2016

Occupation Name (Soccode)	Job Opening
Heavy and Tractor-Trailer Truck Drivers (53-3032)	72
Industrial Engineers (17-2112)	69
Registered Nurses (29-1141)	64
First-Line Supervisors of Food Preparation and Serving Workers (35-1012)	44
First-Line Supervisors of Retail Sales Workers (41-1011)	36
Electrical Engineers (17-2071)	32
Retail Salespersons (41-2031)	31
Social and Human Service Assistants (21-1093)	26
Physical Therapists (29-1123)	24
Maintenance and Repair Workers, General (49-9071)	22
Speech-Language Pathologists (29-1127)	22
Civil Engineers (17-2051)	20
First-Line Supervisors of Production and Operating Workers (51-1011)	20
Career/Technical Education Teachers, Postsecondary (25-1194)	19
Business Operations Specialists, All Other (13-1199)	16
General and Operations Managers (11-1021)	16
Licensed Practical and Licensed Vocational Nurses (29-2061)	16
Mechanical Engineers (17-2141)	16
Physical Therapist Assistants (31-2021)	16
Medical and Health Services Managers (11-9111)	15

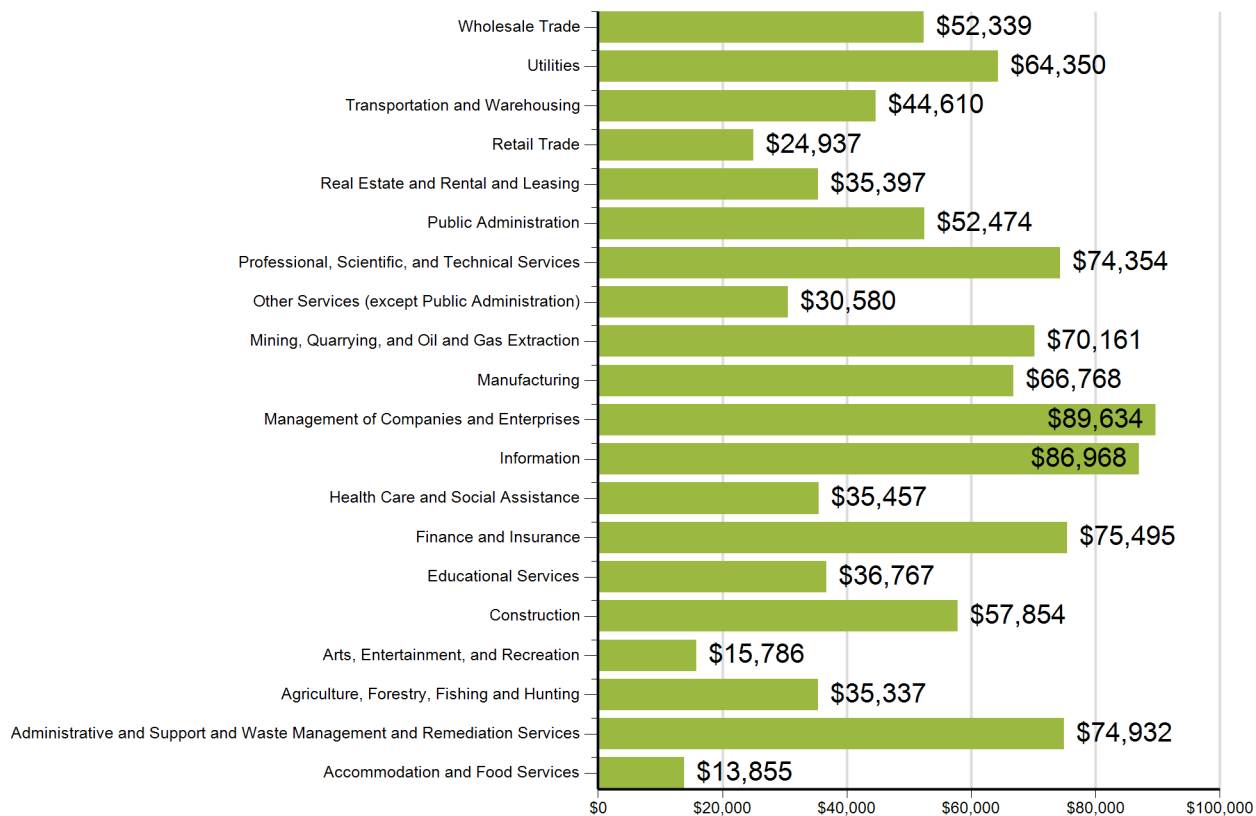
Source: SC Department of Employment & Workforce and The Conference Board's Help Wanted OnLine® Data Series

## New Hires by Industry



US Census Bureau, Local Employment Dynamics - Q2 2016

## Average Annual Wage by Industry



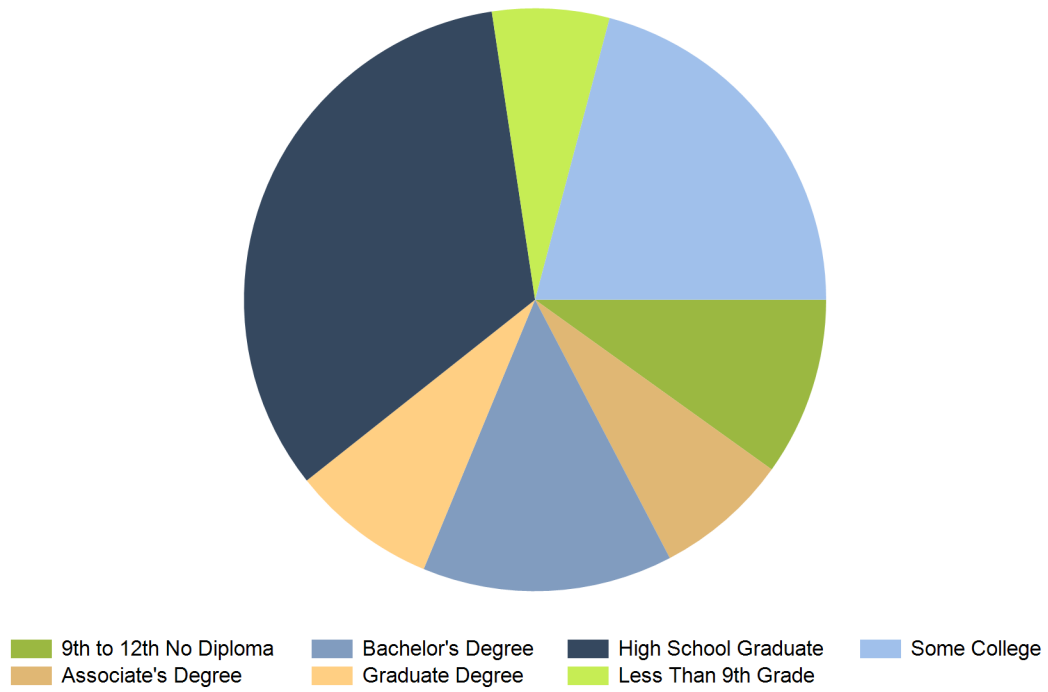
Source: SC Department of Employment & Workforce  
 Quarterly Census of Employment and Wages (QCEW) - Q1  
 2018

## Age of Workers by Industry

Industry	14-18	19-21	22-24	25-34	35-44	45-54	55-64	65+
Total, All Industries	1,238	2,682	3,904	13,997	13,809	15,687	13,501	3,887
Agriculture, Forestry, Fishing and Hunting	22	45	60	260	237	271	192	101
Mining, Quarrying, and Oil and Gas Extraction	0	3	0	23	21	34	29	3
Utilities	0	4	11	98	120	170	110	12
Construction	15	110	250	921	912	1,162	1,090	223
Manufacturing	33	234	506	2,205	2,594	2,804	1,911	279
Wholesale Trade	3	22	50	252	284	306	254	77
Retail Trade	208	637	695	1,661	1,227	1,290	998	475
Transportation and Warehousing	9	51	106	481	517	425	292	56
Information	6	8	50	158	115	123	106	40
Finance and Insurance	0	25	90	521	543	491	422	150
Real Estate and Rental and Leasing	0	12	19	63	89	89	84	39
Professional and Technical Services	13	55	150	832	889	999	1,092	361
Management of Companies and Enterprises	0	0	4	19	21	31	20	7
Administrative and Waste Services	21	166	355	1,309	1,238	2,497	2,891	520
Educational Services	36	45	143	1,099	1,450	1,634	1,378	400
Health Care and Social Assistance	27	116	321	1,572	1,602	1,519	1,311	452
Arts, Entertainment, and Recreation	41	96	109	225	165	182	152	96
Accommodation and Food Services	738	936	760	1,444	868	654	382	127
Other Services, Except Public Administration	23	62	93	307	282	292	226	132
Public Administration	14	43	112	532	620	706	544	328

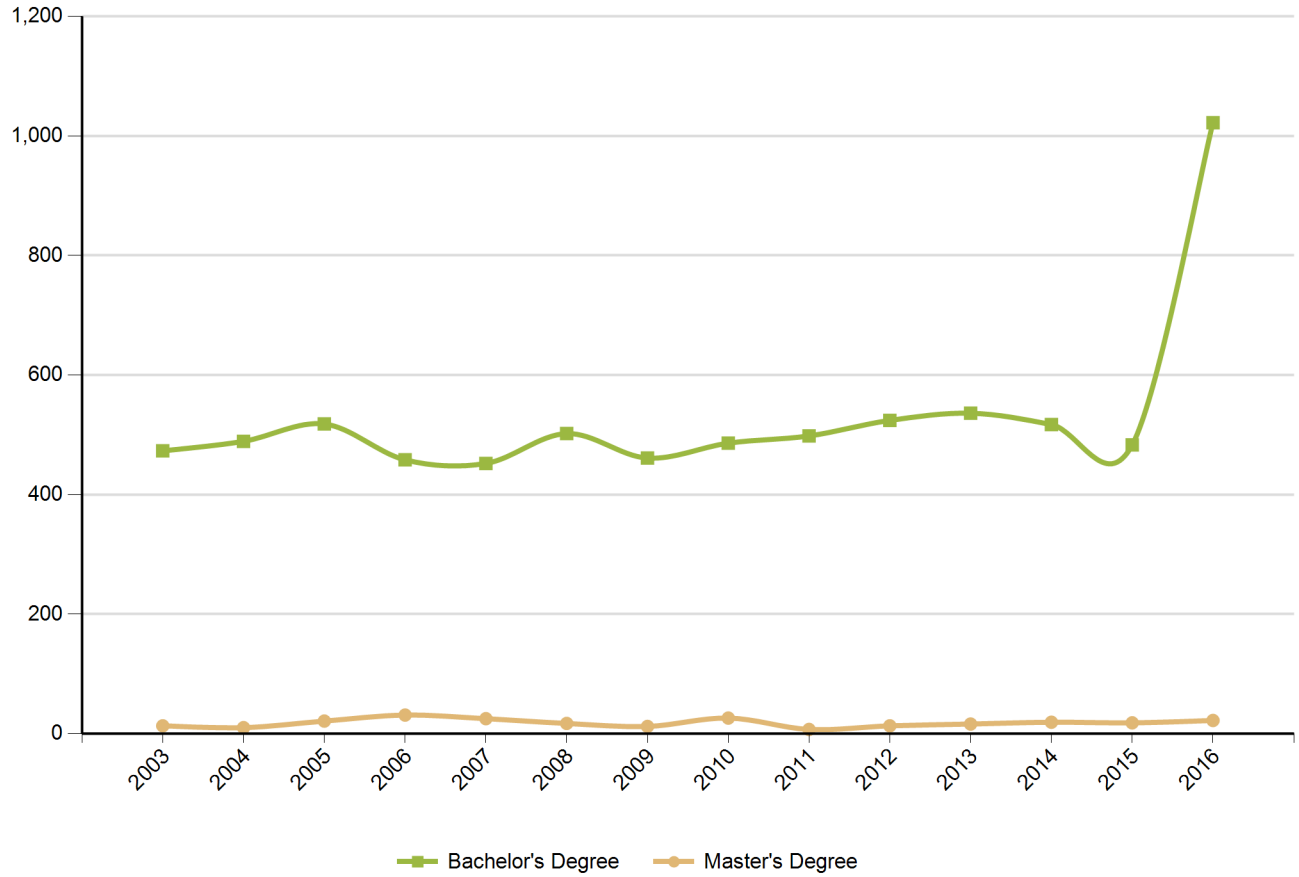
Source: US Census Bureau, Local Employment Dynamics - Q2 2016

## Educational Attainment (Population 25 Years and Older)



Source: US Census Bureau, American Community Survey - 2013 5-Year Estimates

## Graduate Trends



Source: Institute of Education Sciences (IES), Integrated Postsecondary Education Data System

## Educational Institutions

Aiken School of Cosmetology and Barbering  
225 Richland Ave East

Aiken, SC 29801  
803.644.7133  
<http://www.aikenschoolofcosmetology.com>  
2016 Degrees Awarded: 50

Kenneth Shuler School of Cosmetology-North Augusta  
1113 Knox Avenue

North Augusta, SC 29841  
803.278.1200  
<http://www.kennethshuler.com>  
2016 Degrees Awarded: 120

Aiken Technical College  
2276 Jefferson Davis Highway

Graniteville, SC 29829  
803.508.7263  
<http://www.atc.edu>  
2016 Degrees Awarded: 996

University of South Carolina-Aiken  
471 University Pkwy

Aiken, SC 29801  
803.648.6851  
<http://web.usca.edu>  
2016 Degrees Awarded: 1044

*Source: Institute of Education Sciences (IES), Integrated Postsecondary Education Data System*