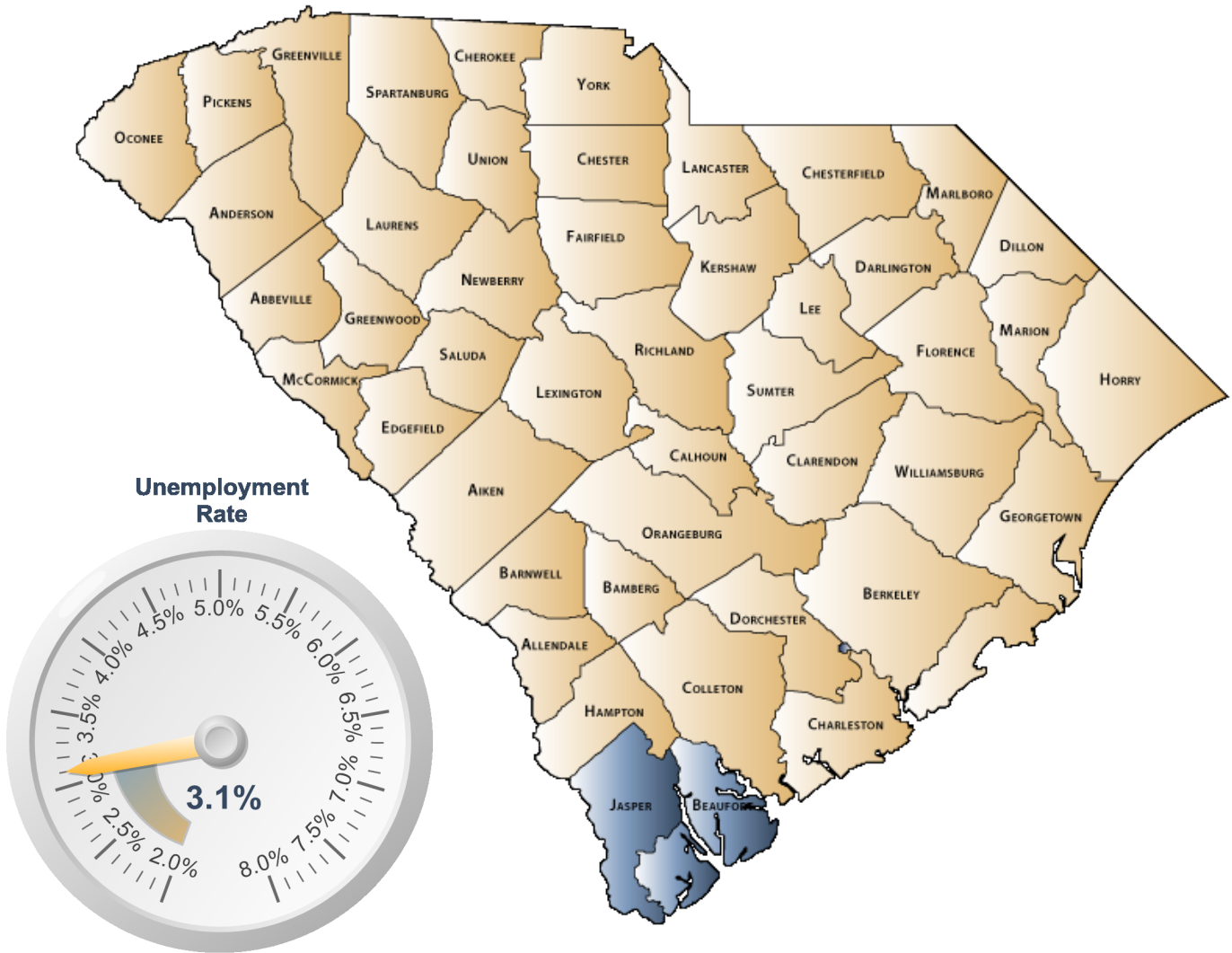


# ECONOMIC PROFILE

Lowcountry Economic Network



**S.C. Department of Employment & Workforce**  
Labor Market Information

1550 Gadsden Street, PO Box 995  
Columbia, SC 29202  
803-737-2660

[www.SCWorkforceInfo.com](http://www.SCWorkforceInfo.com)

<http://LowcountryAlliance.com/>

Updated: 11/19/2018

## Table of Contents

### 1. Economic Data

Annual Unemployment Rates.....	3
Monthly Unemployment Rates.....	4
Area Job Openings.....	5
Unemployment Insurance	
Demographic Data.....	6
Industry Data.....	7
Occupation Data.....	8
Retail Sales.....	9

### 2. Demographic Data

Population	
Age.....	10
Race.....	11
Gender.....	11
Change.....	12
Employer Data	
Size of Establishments.....	13
Employment by Size of Establishment.....	13
20 Largest Employers.....	14

### 3. Industry Data

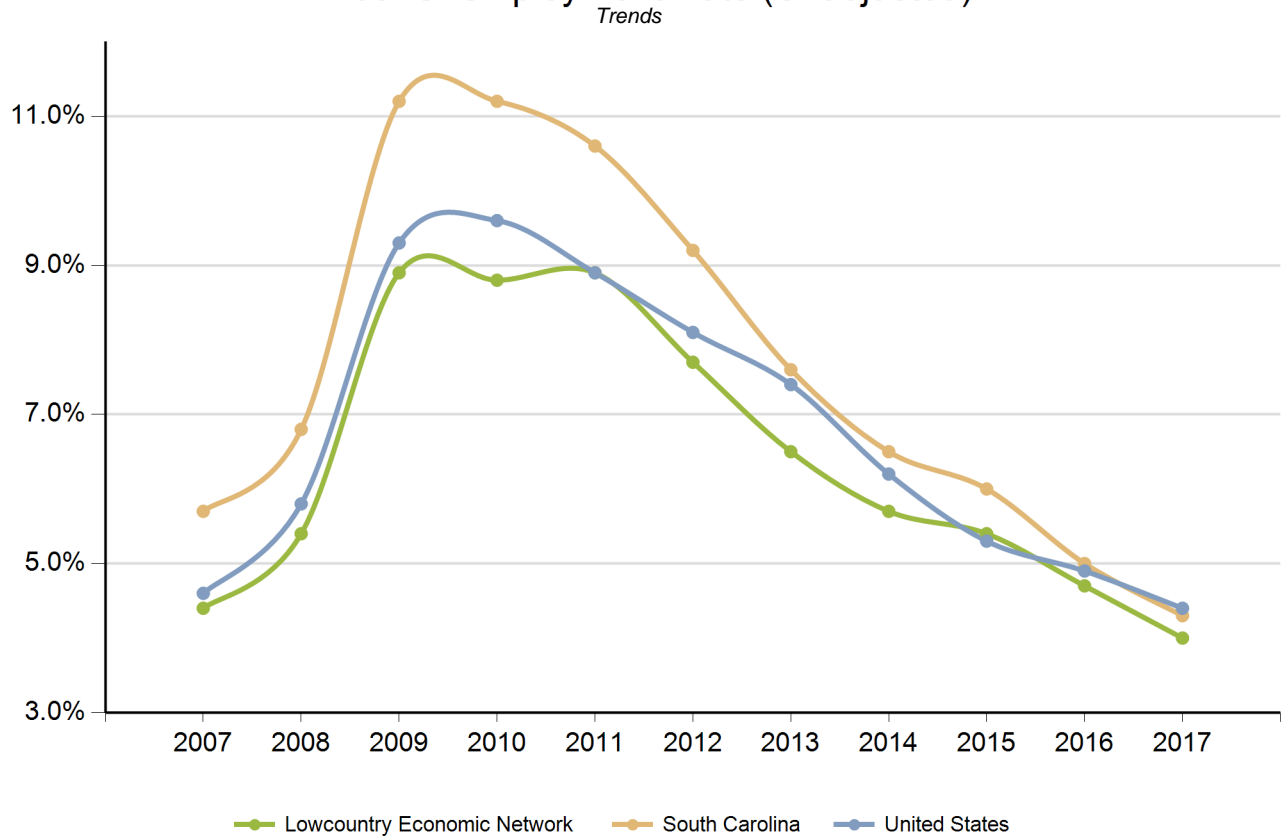
Employment by Industry.....	15
New Startup Firms.....	16
Top Occupational Openings.....	17
New Hires by Industry.....	18
Average Annual Wage by Industry.....	19
Age of Workers by Industry.....	20

### 4. Education Data

Educational Attainment.....	21
Graduate Trends.....	22
Educational Institutions.....	23

**\*Disclaimer: All data provided is an aggregate of the counties' data that comprise the Lowcountry Economic Network**

### Annual Unemployment Rate (Unadjusted)

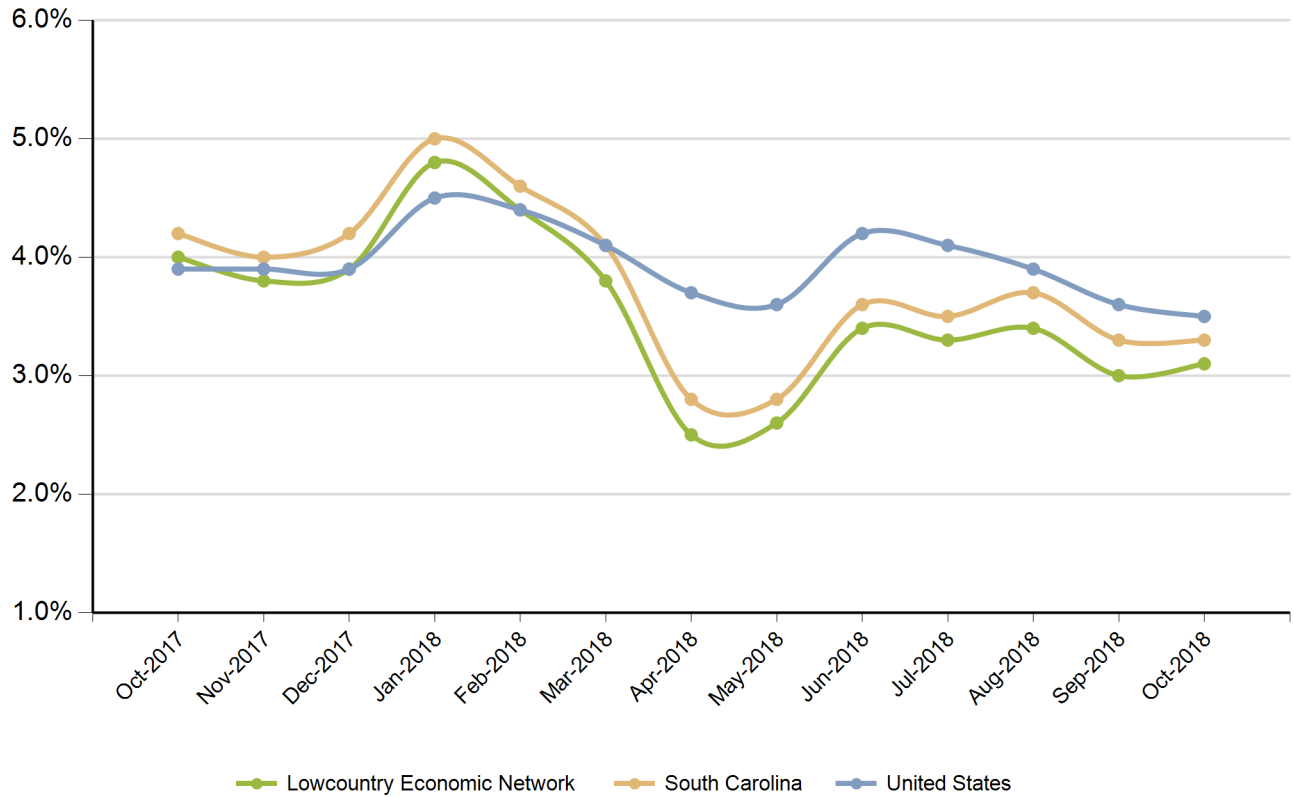


Year	Lowcountry Economic Network			South Carolina			United States		
	Employed	Unemployed	Unemp Rate	Employed	Unemployed	Unemp Rate	Employed	Unemployed	Unemp Rate
2007	70,719	3,249	4.4%	2,005,686	120,205	5.7%	146,047,000	7,078,000	4.6%
2008	69,808	3,988	5.4%	1,996,409	145,823	6.8%	145,362,000	8,924,000	5.8%
2009	66,452	6,527	8.9%	1,910,670	242,075	11.2%	139,877,000	14,265,000	9.3%
2010	69,507	6,725	8.8%	1,915,045	240,623	11.2%	139,064,000	14,825,000	9.6%
2011	69,681	6,781	8.9%	1,945,900	229,623	10.6%	139,869,000	13,747,000	8.9%
2012	70,972	5,909	7.7%	1,985,618	201,260	9.2%	142,469,000	12,506,000	8.1%
2013	73,351	5,065	6.5%	2,023,642	167,326	7.6%	143,929,000	11,460,000	7.4%
2014	76,273	4,593	5.7%	2,079,565	143,413	6.5%	146,305,000	9,617,000	6.2%
2015	78,964	4,518	5.4%	2,134,244	135,095	6.0%	148,834,000	8,296,000	5.3%
2016	80,562	3,975	4.7%	2,179,521	114,145	5.0%	151,436,000	7,751,000	4.9%
2017	82,896	3,436	4.0%	2,213,894	98,757	4.3%	153,337,000	6,982,000	4.4%

Source: SC Department of Employment & Workforce

### Monthly Unemployment Rate (Unadjusted)

Past 13 Months



Period	Lowcountry Economic Network	South Carolina	United States
Oct-2017	4.0%	4.2%	3.9%
Nov-2017	3.8%	4.0%	3.9%
Dec-2017	3.9%	4.2%	3.9%
Jan-2018	4.8%	5.0%	4.5%
Feb-2018	4.4%	4.6%	4.4%
Mar-2018	3.8%	4.1%	4.1%
Apr-2018	2.5%	2.8%	3.7%
May-2018	2.6%	2.8%	3.6%
Jun-2018	3.4%	3.6%	4.2%
Jul-2018	3.3%	3.5%	4.1%
Aug-2018	3.4%	3.7%	3.9%
Sep-2018	3.0%	3.3%	3.6%
Oct-2018	3.1%	3.3%	3.5%

Source: SC Department of Employment & Workforce

## Area Job Openings

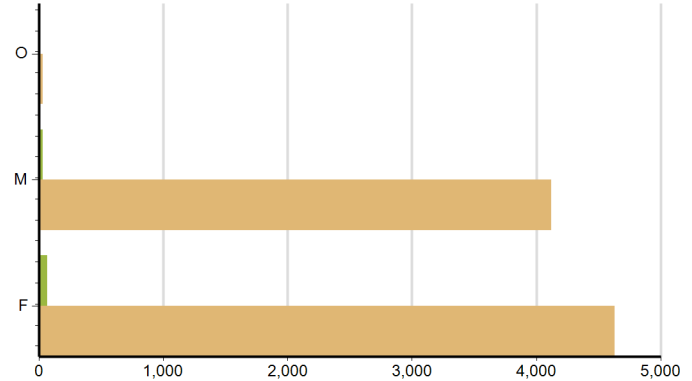
Period	Lowcountry Economic Network				South Carolina			
	Employed	Unemployed	Unemp Rate	Job Openings	Employed	Unemployed	Unemp Rate	Job Openings
Oct-2017	82,082	3,384	4.0%	2,126	2,221,475	97,934	4.2%	57,940
Nov-2017	81,858	3,191	3.8%	1,887	2,221,189	97,944	4.2%	60,228
Dec-2017	81,376	3,278	3.9%	2,020	2,220,845	97,879	4.2%	56,028
Jan-2018	81,016	4,058	4.8%	2,055	2,221,051	100,182	4.3%	51,746
Feb-2018	81,928	3,760	4.4%	2,041	2,223,397	101,415	4.4%	57,596
Mar-2018	83,087	3,319	3.8%	2,445	2,225,252	102,079	4.4%	59,107
Apr-2018	84,543	2,175	2.5%	2,489	2,225,655	97,929	4.2%	64,770
May-2018	85,434	2,276	2.6%	2,292	2,225,414	92,505	4.0%	61,940
Jun-2018	86,700	3,023	3.4%	2,351	2,225,973	87,096	3.8%	57,230
Jul-2018	87,310	2,952	3.3%	2,354	2,227,550	82,339	3.6%	62,943
Aug-2018	85,561	3,000	3.4%	2,470	2,227,762	78,758	3.4%	63,496
Sep-2018	83,733	2,579	3.0%	2,159	2,227,597	76,741	3.3%	61,190
Oct-2018	83,836	2,664	3.1%	2,183	2,231,027	76,220	3.3%	55,358

Source: SC Department of Employment & Workforce, The Conference Board's Help Wanted OnLine® Data Series  
South Carolina Data is Seasonally Adjusted

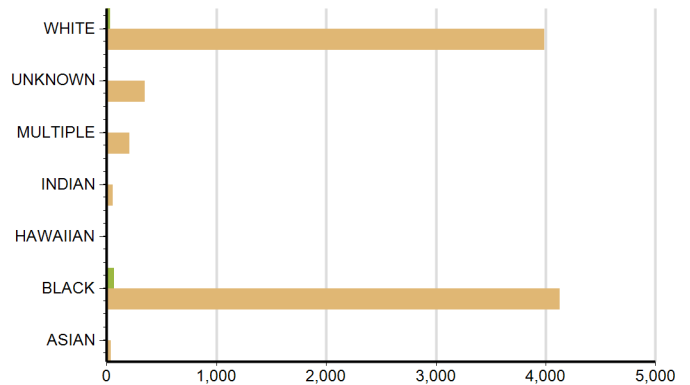
## Characteristics of Unemployment Insurance Claimants

October-2018

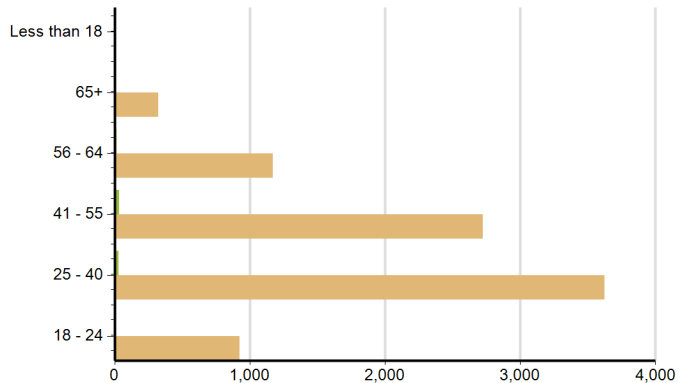
Gender	Lowcountry Economic Network	South Carolina
Male	32	4,121
Female	1	33
Female	69	4,628



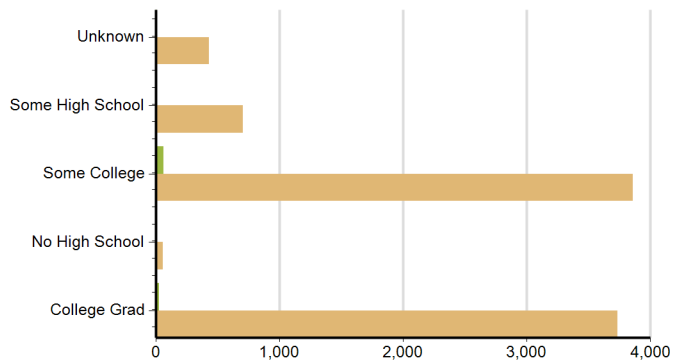
Race	Lowcountry Economic Network	South Carolina
BLACK	65	4,130
MULTIPLE	5	210
WHITE	32	3,991



Age Group	Lowcountry Economic Network	South Carolina
56 - 64	18	1,170
18 - 24	12	925
25 - 40	31	3,626
65+	4	325
41 - 55	37	2,723



Education	Lowcountry Economic Network	South Carolina
Unknown	6	429
Some College	61	3,860
Some High School	10	702
College Grad	25	3,734

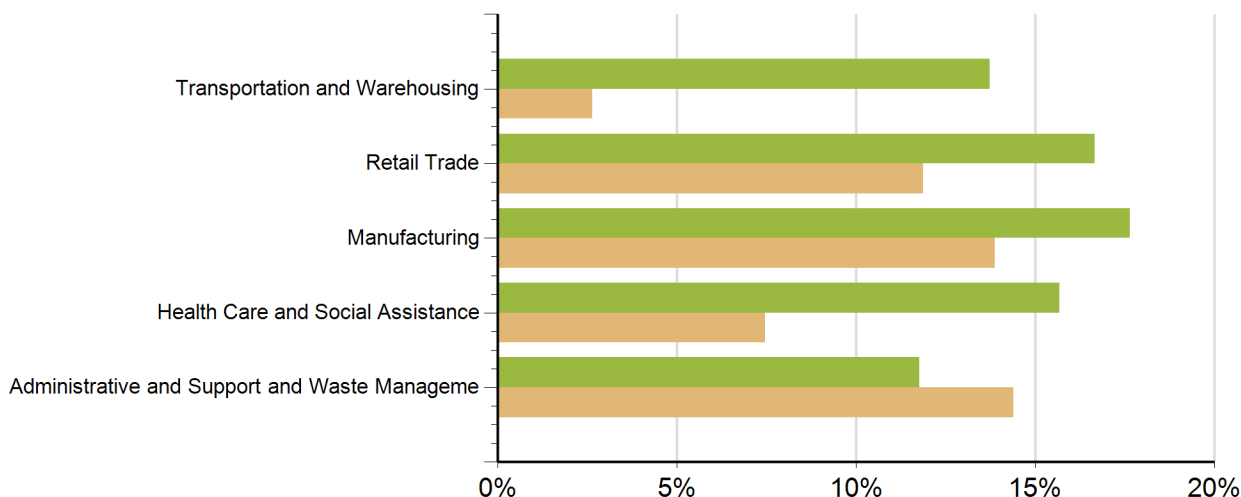


Source: SC Department of Employment & Workforce

## Characteristics of Unemployment Insurance Claims by Industry

Industry Groups with Largest Number of Claims

October-2018



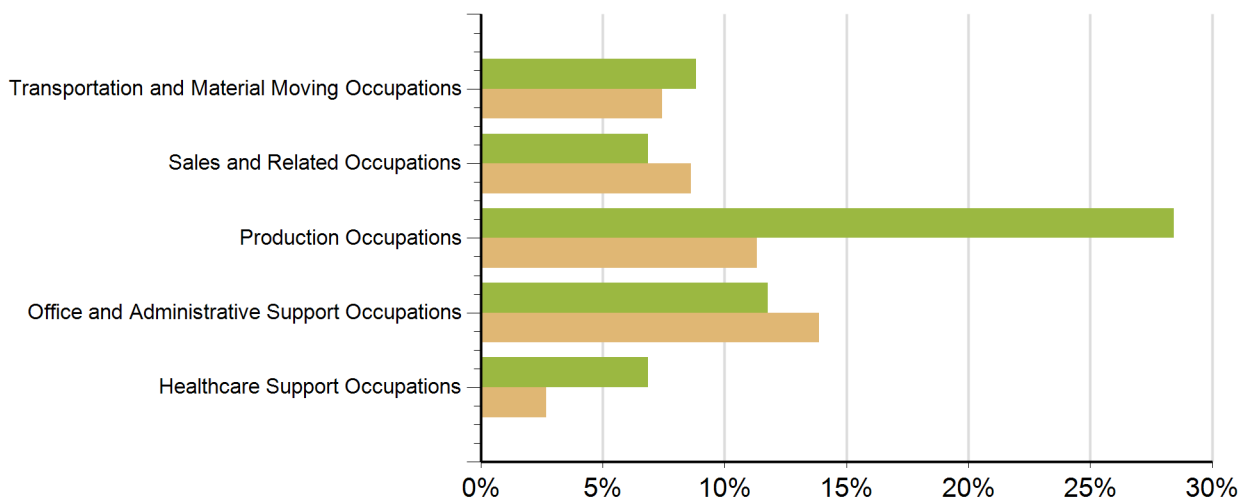
Industry	Lowcountry Economic Network	South Carolina
Administrative and Support and Waste Management	12	1,270
Unknown	5	789
Educational Services	3	158
Health Care and Social Assistance	16	659
Wholesale Trade	1	309
Manufacturing	18	1,224
Professional, Scientific, and Technical Services	2	439
Retail Trade	17	1,048
Public Administration	2	151
Mining, Quarrying, and Oil and Gas Extraction	1	7
Transportation and Warehousing	14	232
Accommodation and Food Services	3	1,131
Agriculture, Forestry, Fishing and Hunting	3	70
Construction	4	516
Real Estate and Rental and Leasing	1	204

Source: SC Department of Employment & Workforce

## Characteristics of Unemployment Insurance Claims by Occupation

Occupation Groups with Largest Number of Claims

October-2018

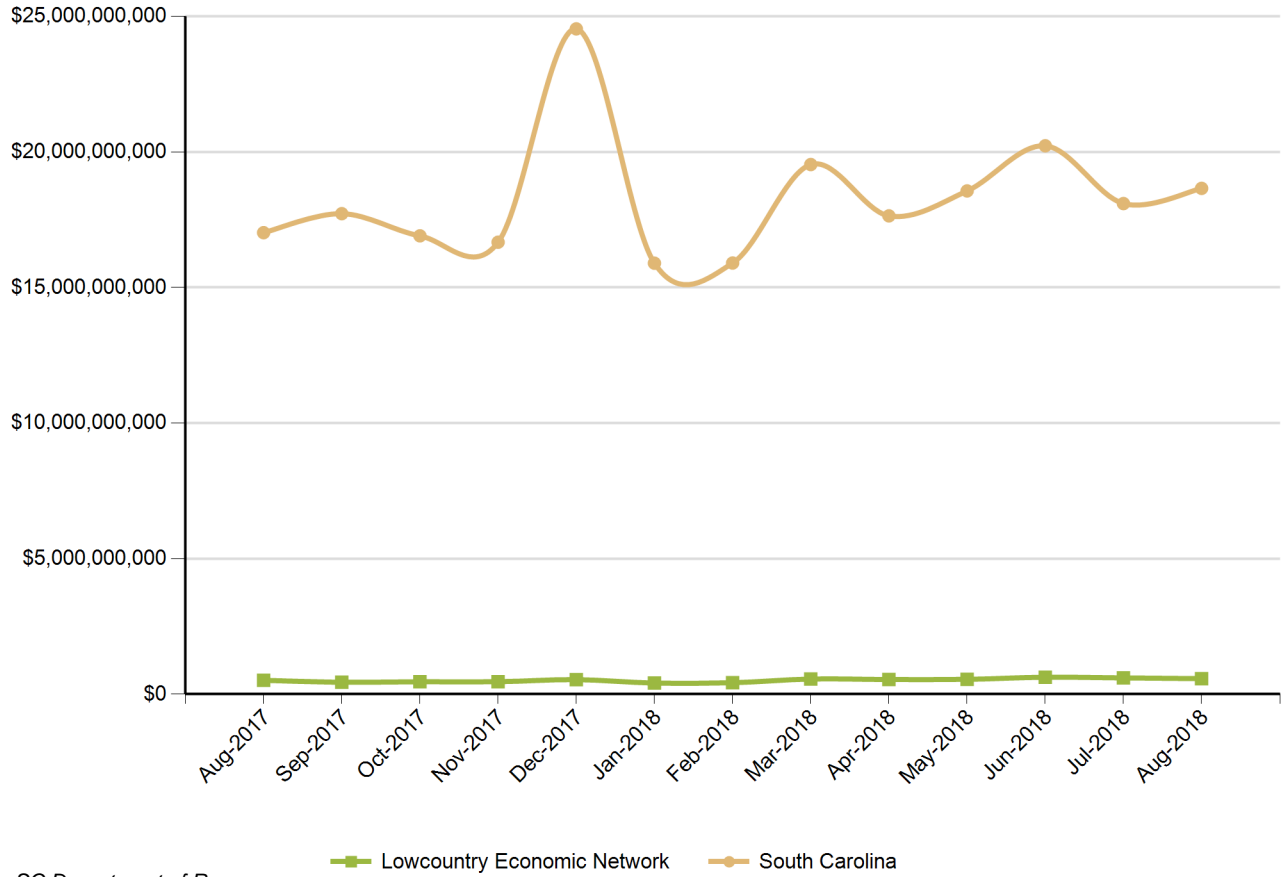


Occupation	Lowcountry Economic Network	South Carolina
Architecture and Engineering Occupations	1	215
Building and Grounds Cleaning and Maintenance Occu	5	403
Business and Financial Operations Occupations	2	260
Community and Social Service Occupations	2	62
Construction and Extraction Occupations	3	430
Farming, Fishing, and Forestry Occupations	1	55
Food Preparation and Serving Related Occupations	3	744
Healthcare Practitioners and Technical Occupations	5	206
Healthcare Support Occupations	7	237
Installation, Maintenance, and Repair Occupations	1	371
Life, Physical, and Social Science Occupations	1	76
Management Occupations	4	769
Office and Administrative Support Occupations	12	1,226
Personal Care and Service Occupations	1	127
Production Occupations	29	999
Protective Service Occupations	1	102
Sales and Related Occupations	7	761
Transportation and Material Moving Occupations	9	657
Unknown	8	718

Source: SC Department of Employment & Workforce

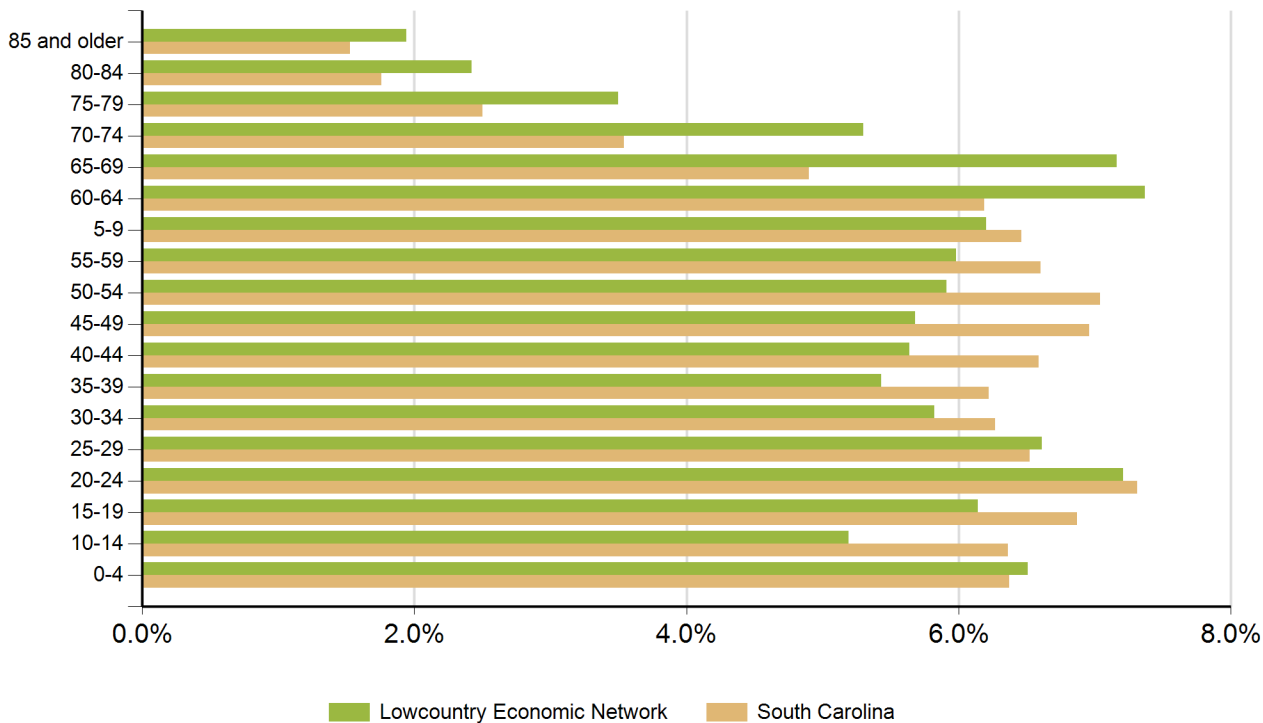


### Retail Sales



Source: SC Department of Revenue

### Population by Age



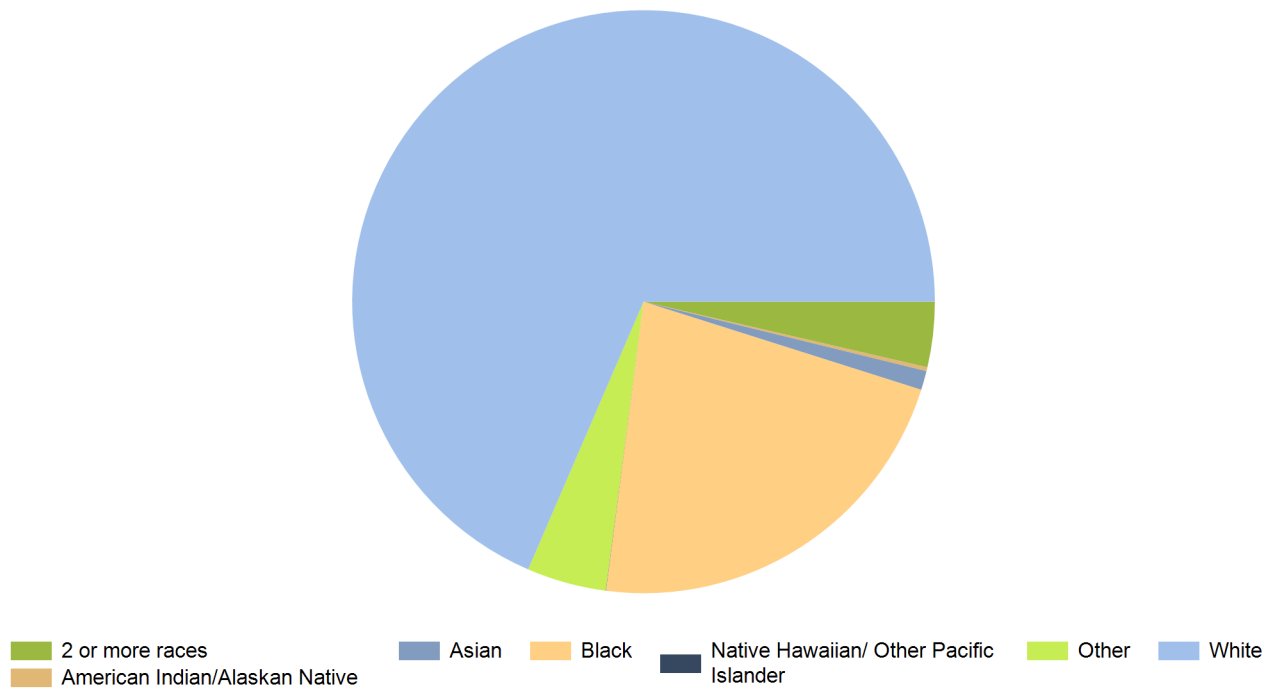
Age Range	Lowcountry Economic Network	South Carolina	United States
0-4	12,416	298,242	20,052,112
5-9	11,819	302,111	20,409,060
10-14	9,892	297,443	20,672,609
15-19	11,705	321,540	21,715,074
20-24	13,749	342,237	22,099,887
25-29	12,600	305,167	21,243,365
30-34	11,097	293,464	20,467,912
35-39	10,355	291,183	19,876,161
40-44	10,760	308,158	20,998,001
45-49	10,842	325,660	22,109,946
50-54	11,275	329,431	22,396,322
55-59	11,409	309,061	20,165,892
60-64	14,050	289,690	17,479,211
65-69	13,666	229,251	13,189,508
70-74	10,114	165,797	9,767,522
75-79	6,686	117,187	7,438,750
80-84	4,622	82,223	5,781,697
85 and older	3,705	71,757	5,673,565

Source: US Census Bureau, American Community Survey

### Population by Race

Race	Lowcountry Economic Network	%	South Carolina	%	United States	%
White	133,105	68.5%	3,144,146	66.0%	230,592,579	72.0%
Black	43,087	22.2%	1,298,534	27.3%	39,167,010	12.2%
American Indian/Alaskan Native	420	0.2%	14,732	0.3%	2,540,309	0.8%
Asian	2,053	1.1%	61,097	1.3%	15,231,962	4.8%
Native Hawaiian/ Other Pacific Islander	29	0.0%	2,128	0.0%	526,347	0.2%
2 or more races	7,016	3.6%	169,670	3.6%	17,464,666	5.5%
Other	8,560	4.4%	74,130	1.6%	14,746,054	4.6%

Source: US Census Bureau, American Community Survey



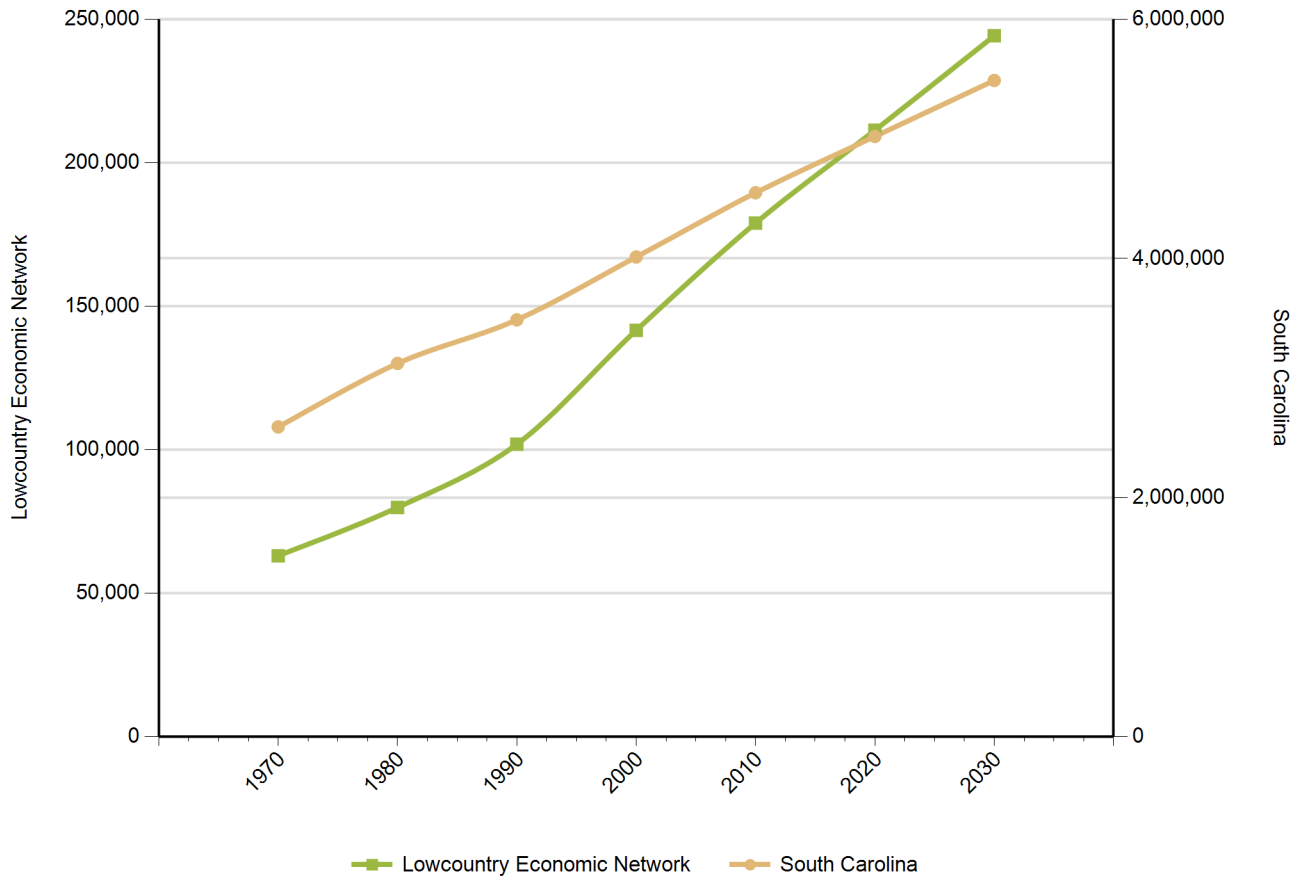
### Population by Gender

Gender	Lowcountry Economic Network	South Carolina	United States
Female	95,836	2,403,297	158,289,182
Male	94,926	2,276,305	153,247,412

Source: US Census Bureau, American Community Survey

## Population Change

*Historical and Projected*



Year	Lowcountry Economic Network	South Carolina
1970	63,021	2,590,713
1980	79,868	3,121,820
1990	101,912	3,486,310
2000	141,615	4,012,012
2010	178,990	4,549,150
2020	211,350	5,020,400
2030	244,270	5,488,460

Source: US Census Bureau

## Employers by Size of Establishment

Employees	Lowcountry Economic Network	South Carolina
0 to 4	3,827	79,582
5 to 9	974	20,165
10 to 19	772	15,299
20 to 49	509	11,617
50 to 99	137	4,503
100 to 249	82	2,790
250 to 499	16	854
500 to 999	6	391
1000 +	3	304

## Employment by Size of Establishment

Employees	Lowcountry Economic Network	South Carolina
0 to 4	5,896	112,852
5 to 9	6,451	134,677
10 to 19	10,330	207,583
20 to 49	15,445	354,792
50 to 99	9,498	310,957
100 to 249	12,295	422,086
250 to 499	5,339	293,191
500 to 999	3,861	263,096
1000 +	5,588	764,813

Source: SC Department of Employment & Workforce - Q1 2018

## 20 Largestest Employers

(Listed Alphabetically)

### Corporation Name

BEAUFORT COUNTY SCHOOL DISTRICT

BEAUFORT MEMORIAL HOSPITAL

CARECORE NATIONAL LLC

WAL-MART ASSOCIATES INC

COUNTY OF BEAUFORT

DEPARTMENT OF DEFENSE

JASPER CO BD OF DISABILITIES

PUBLIX SUPER MARKETS INC

MARINE CORPS COMMUNITY SERVICES

TENET PHYSICIAN SVCS OF HILTON HEAD

MONTAGE HOTELS AND RESORTS LLC

JASPER COUNTY SCHOOL DISTRICT

MARRIOTT RESORTS HOSP CORP

SEA PINES RESORT LLC

HARGRAY COMMUNICATIONS GROUP INC

LOWES HOME CENTERS INC

THE GREENERY INC

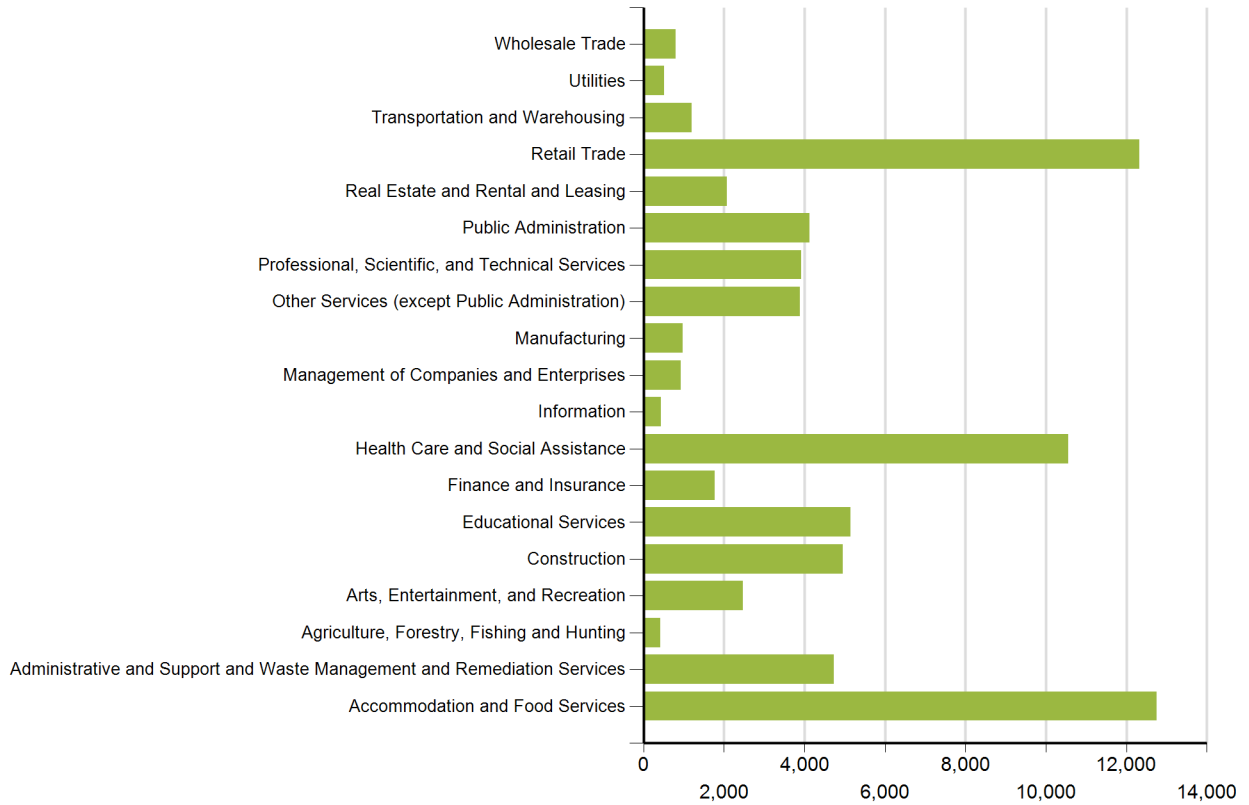
COASTAL CAROLINA MEDICAL CENTER INC

CYPRESS CLUB INC.

UNIVERSITY OF SOUTH CAROLINA

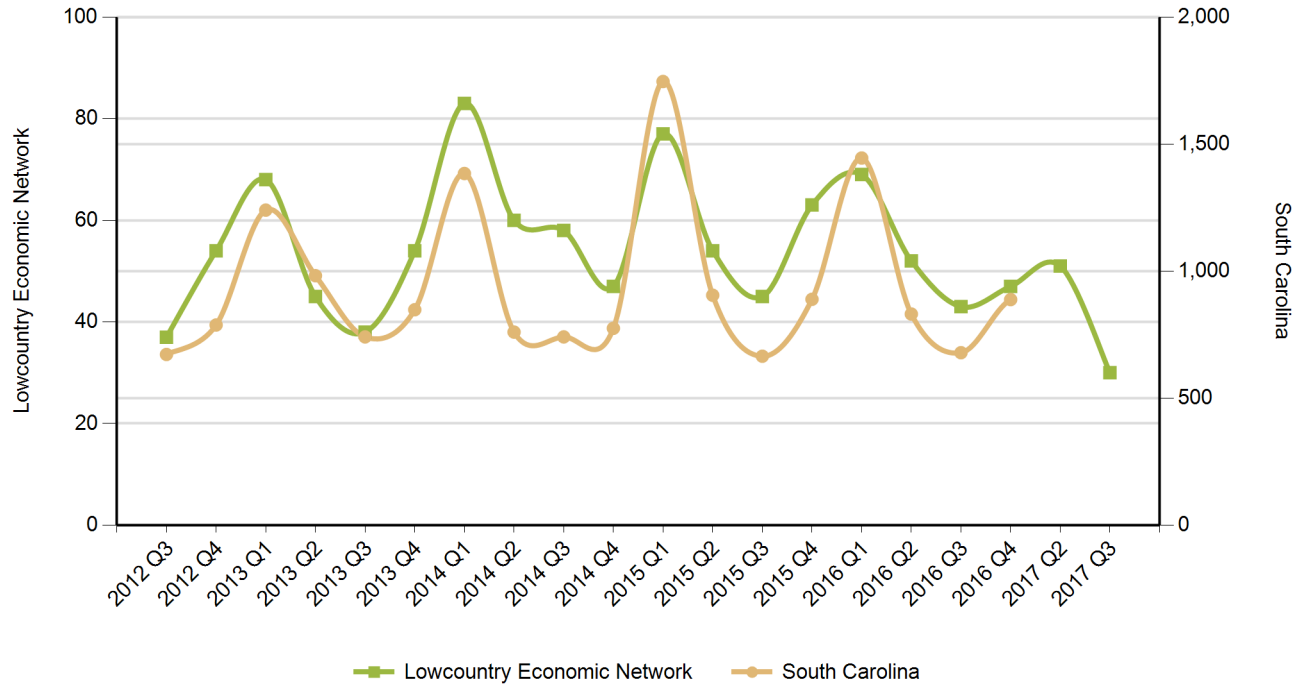
*Source: SC Department of Employment & Workforce - Q1 2018*

## Employment by Industry



Source: SC Department of Employment & Workforce  
 Quarterly Census of Employment and Wages (QCEW) - Q1 2018

### New Startup Firms



Quarter	Lowcountry Economic Network	South Carolina
2017 Q3	30	
2017 Q2	51	
2016 Q4	47	888
2016 Q3	43	679
2016 Q2	52	831
2016 Q1	69	1,445
2015 Q4	63	889
2015 Q3	45	665
2015 Q2	54	905
2015 Q1	77	1,746
2014 Q4	47	775
2014 Q3	58	741
2014 Q2	60	760
2014 Q1	83	1,384
2013 Q4	54	848
2013 Q3	38	741
2013 Q2	45	982
2013 Q1	68	1,240
2012 Q4	54	788
2012 Q3	37	672

*Note: A firm is included in the count when it does not have a UI Account Number in the previous quarter and has a Setup Date that falls in the quarter displayed.  
Source: SC Department of Employment & Workforce*



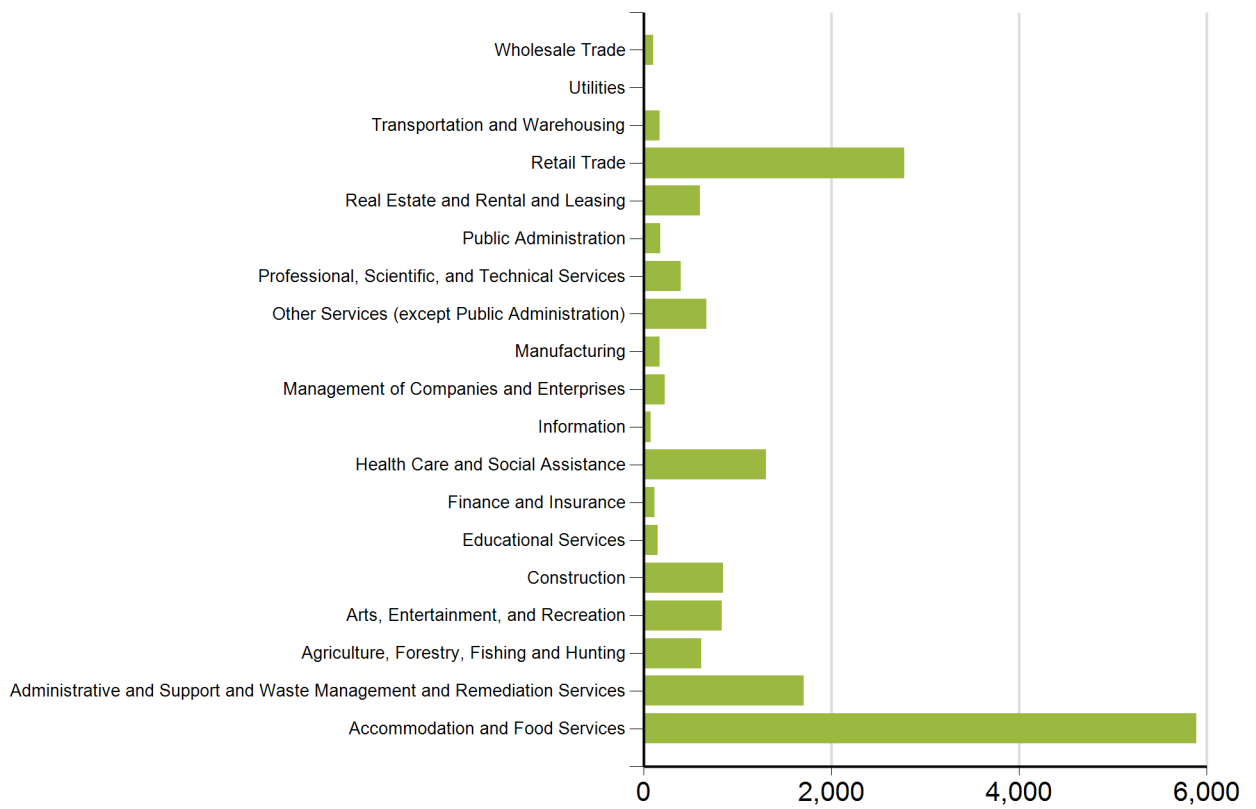
## Top 20 Occupational Openings

April 2016

Occupation Name (Soccode)	Job Opening
Registered Nurses (29-1141)	141
Heavy and Tractor-Trailer Truck Drivers (53-3032)	137
Retail Salespersons (41-2031)	97
First-Line Supervisors of Food Preparation and Serving Workers (35-1012)	89
First-Line Supervisors of Retail Sales Workers (41-1011)	81
First-Line Supervisors of Office and Administrative Support Workers (43-1011)	63
Waiters and Waitresses (35-3031)	59
Customer Service Representatives (43-4051)	57
Cooks, Restaurant (35-2014)	53
Maids and Housekeeping Cleaners (37-2012)	52
Coaches and Scouts (27-2022)	48
Maintenance and Repair Workers, General (49-9071)	47
Hotel, Motel, and Resort Desk Clerks (43-4081)	41
Landscaping and Groundskeeping Workers (37-3011)	41
First-Line Supervisors of Construction Trades and Extraction Workers (47-1011)	37
Carpenters (47-2031)	26
Dishwashers (35-9021)	26
Automotive Service Technicians and Mechanics (49-3023)	24
Bookkeeping, Accounting, and Auditing Clerks (43-3031)	24
Cashiers (41-2011)	23

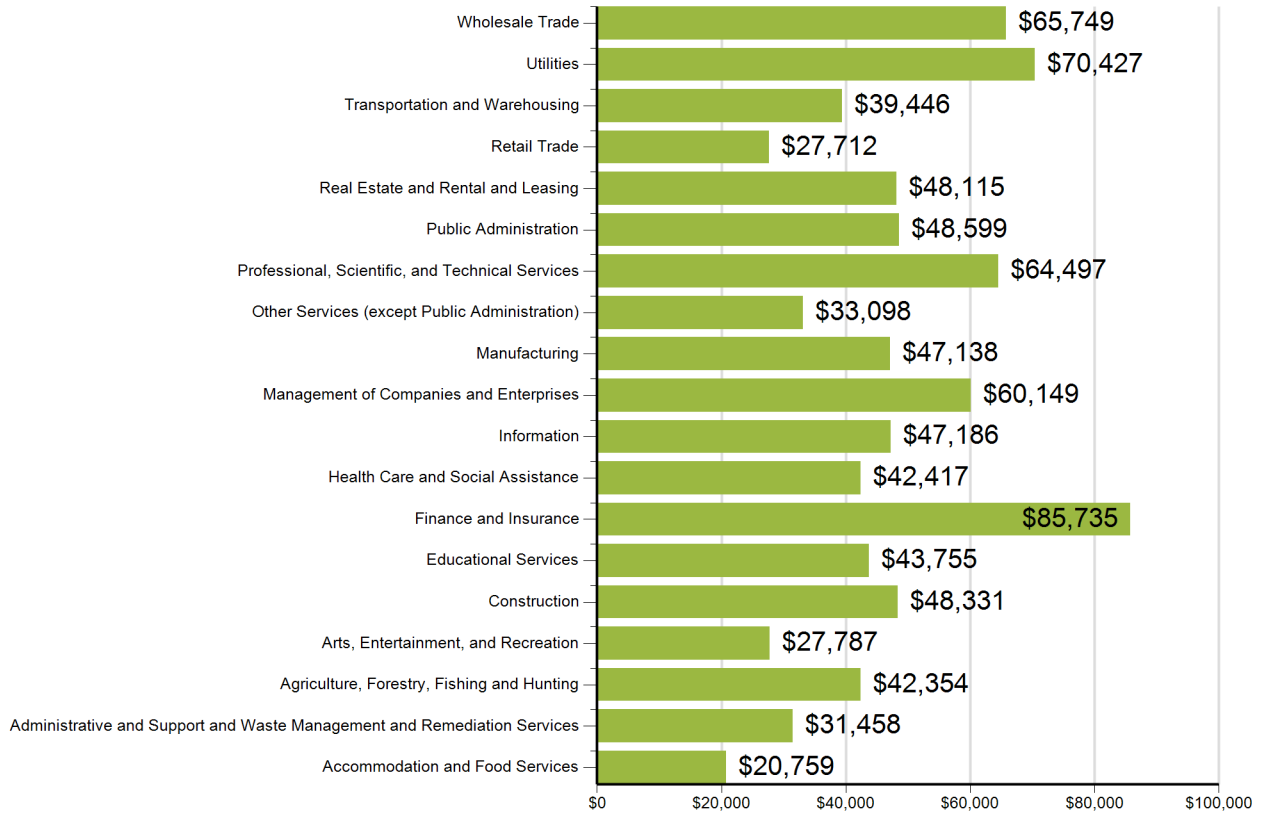
Source: SC Department of Employment & Workforce and The Conference Board's Help Wanted OnLine® Data Series

## New Hires by Industry



US Census Bureau, Local Employment Dynamics - Q2 2016

## Average Annual Wage by Industry



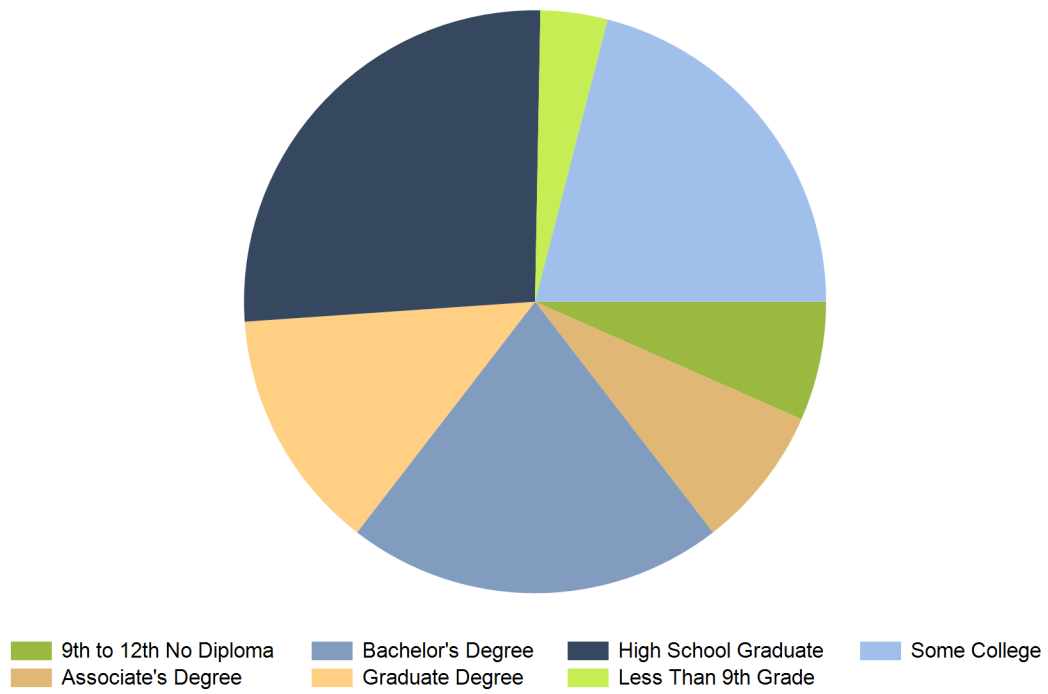
Source: SC Department of Employment & Workforce  
 Quarterly Census of Employment and Wages (QCEW) - Q1  
 2018

## Age of Workers by Industry

Industry	14-18	19-21	22-24	25-34	35-44	45-54	55-64	65+
Total, All Industries	1,646	2,967	3,873	14,740	13,790	13,922	11,199	5,678
Agriculture, Forestry, Fishing and Hunting	0	8	12	75	68	85	75	38
Utilities	0	3	5	77	104	160	115	19
Construction	27	125	210	997	1,084	1,077	750	315
Manufacturing	14	30	44	221	204	216	148	58
Wholesale Trade	0	12	34	178	191	230	148	91
Retail Trade	359	790	817	2,114	1,679	1,780	1,651	999
Transportation and Warehousing	3	9	37	152	145	203	155	66
Information	37	54	28	77	67	82	90	35
Finance and Insurance	0	16	39	307	360	387	298	127
Real Estate and Rental and Leasing	16	36	102	417	435	501	417	359
Professional and Technical Services	18	55	100	559	620	589	609	310
Management of Companies and Enterprises	5	24	63	276	220	232	156	50
Administrative and Waste Services	41	162	234	1,157	1,062	1,094	758	429
Educational Services	15	12	161	857	1,158	1,212	1,098	478
Health Care and Social Assistance	23	159	384	2,184	2,141	2,157	1,820	807
Arts, Entertainment, and Recreation	79	100	156	536	478	504	490	386
Accommodation and Food Services	946	1,186	1,164	3,216	2,354	1,892	1,242	608
Other Services, Except Public Administration	43	149	196	726	737	831	659	319
Public Administration	8	26	81	608	683	688	520	182

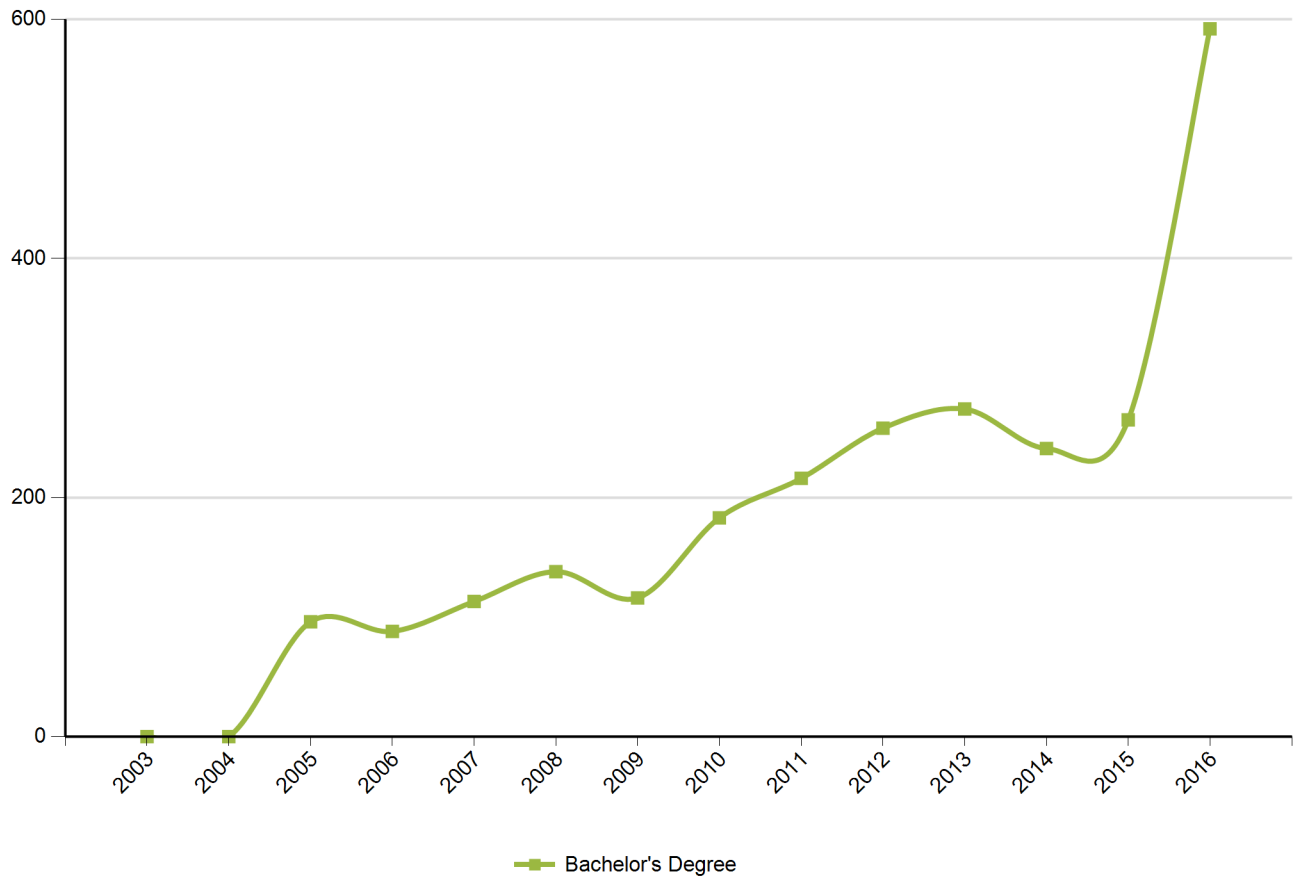
Source: US Census Bureau, Local Employment Dynamics - Q2 2016

## Educational Attainment (Population 25 Years and Older)



Source: US Census Bureau, American Community Survey - 2013 5-Year Estimates

## Graduate Trends



Source: Institute of Education Sciences (IES), Integrated Postsecondary Education Data System

## Educational Institutions

Technical College of the Lowcountry  
921 Ribaut Road

Beaufort, SC 29901  
800.768.8252  
<http://www.tcl.edu>  
2016 Degrees Awarded: 1032

University of South Carolina-Beaufort  
1 University Boulevard

Bluffton, SC 29909  
843.208.8000  
<http://www.uscb.edu>  
2016 Degrees Awarded: 596

*Source: Institute of Education Sciences (IES), Integrated Postsecondary Education Data System*