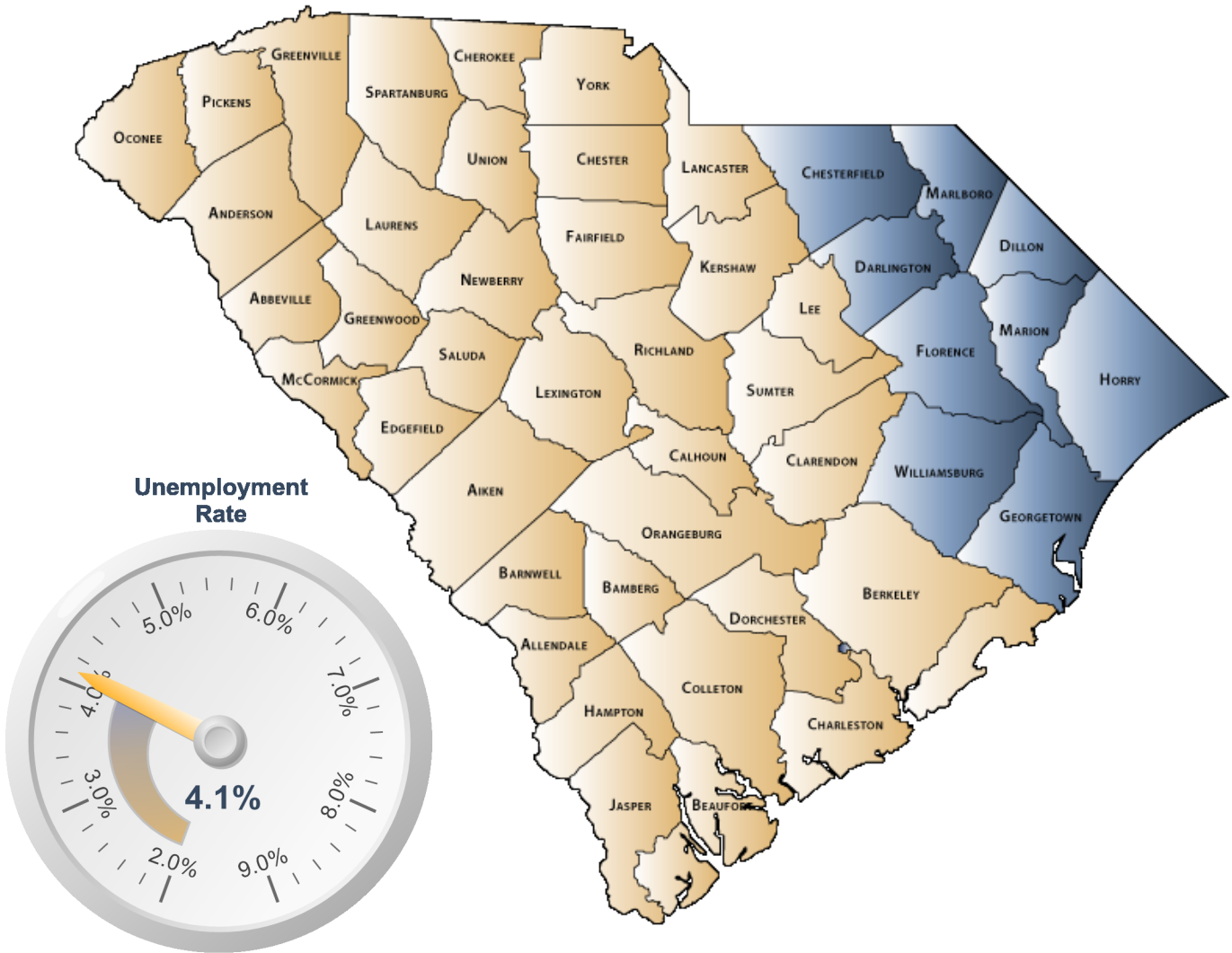


ECONOMIC PROFILE

NESA



S.C. Department of Employment & Workforce
Labor Market Information

1550 Gadsden Street, PO Box 995
Columbia, SC 29202
803-737-2660

www.SCWorkforceInfo.com

<http://www.NESASC.org/>

Updated: 11/19/2018

Table of Contents

1. Economic Data

Annual Unemployment Rates.....	3
Monthly Unemployment Rates.....	4
Area Job Openings.....	5
Unemployment Insurance	
Demographic Data.....	6
Industry Data.....	7
Occupation Data.....	8
Retail Sales.....	9

2. Demographic Data

Population	
Age.....	10
Race.....	11
Gender.....	11
Change.....	12
Employer Data	
Size of Establishments.....	13
Employment by Size of Establishment.....	13
20 Largest Employers.....	14

3. Industry Data

Employment by Industry.....	15
New Startup Firms.....	16
Top Occupational Openings.....	17
New Hires by Industry.....	18
Average Annual Wage by Industry.....	19
Age of Workers by Industry.....	20

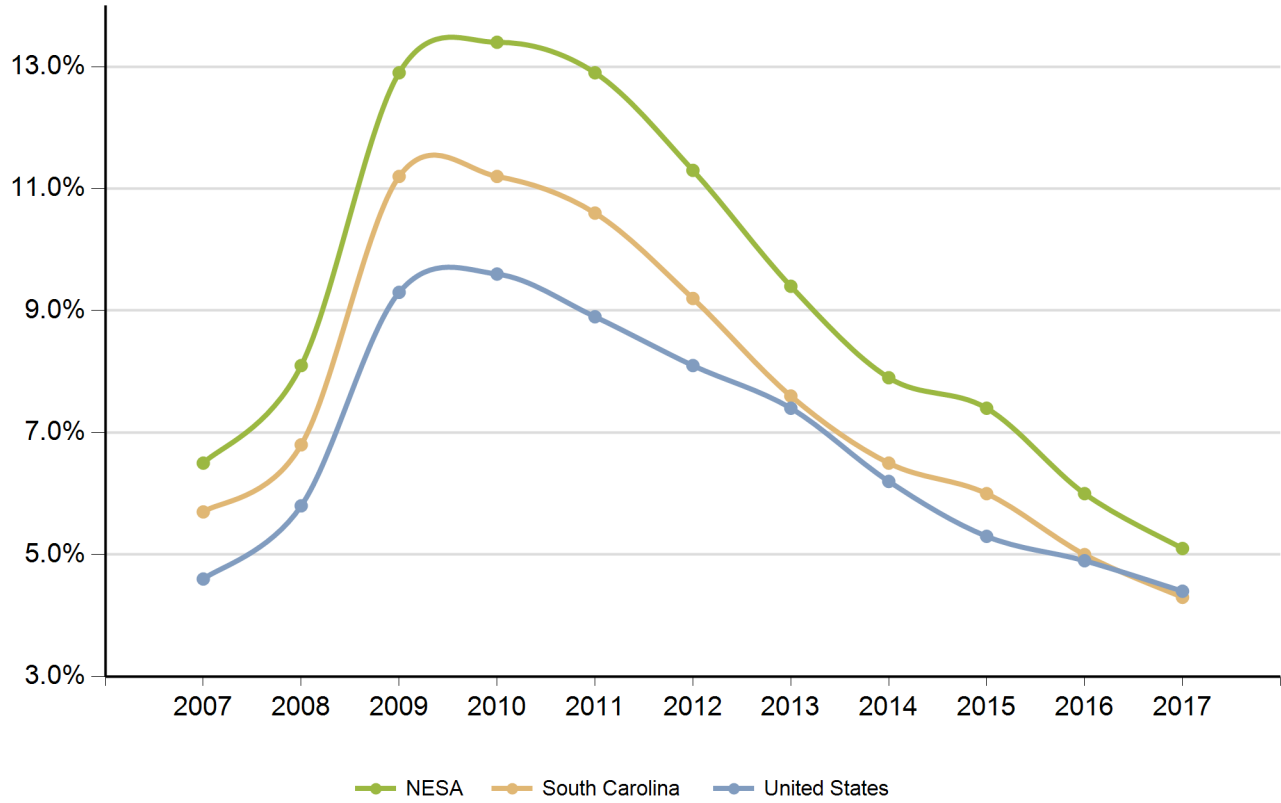
4. Education Data

Educational Attainment.....	21
Graduate Trends.....	22
Educational Institutions.....	23

***Disclaimer: All data provided is an aggregate of the counties' data that comprise the NESAS**

Annual Unemployment Rate (Unadjusted)

Trends

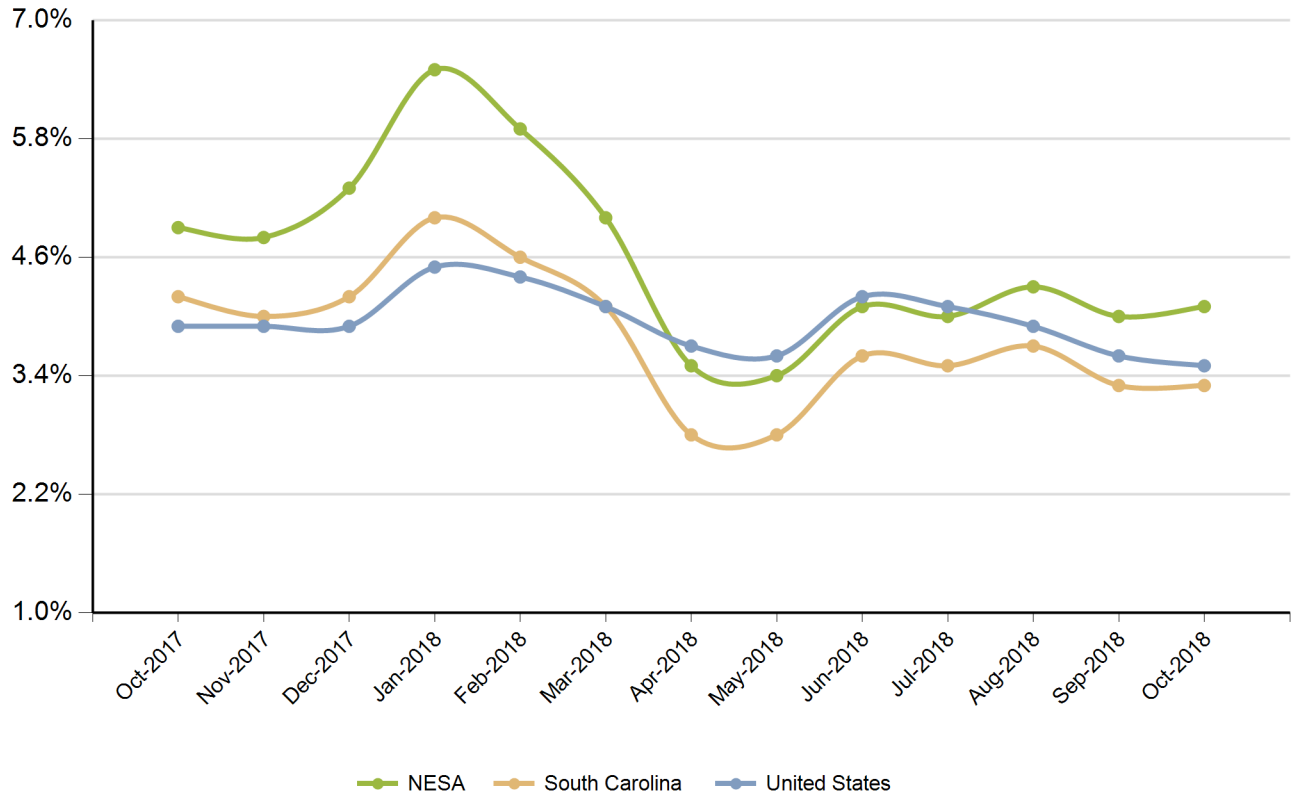


Year	NESA			South Carolina			United States		
	Employed	Unemployed	Unemp Rate	Employed	Unemployed	Unemp Rate	Employed	Unemployed	Unemp Rate
2007	303,143	21,007	6.5%	2,005,686	120,205	5.7%	146,047,000	7,078,000	4.6%
2008	300,152	26,358	8.1%	1,996,409	145,823	6.8%	145,362,000	8,924,000	5.8%
2009	286,394	42,430	12.9%	1,910,670	242,075	11.2%	139,877,000	14,265,000	9.3%
2010	281,991	43,695	13.4%	1,915,045	240,623	11.2%	139,064,000	14,825,000	9.6%
2011	283,764	42,148	12.9%	1,945,900	229,623	10.6%	139,869,000	13,747,000	8.9%
2012	287,126	36,605	11.3%	1,985,618	201,260	9.2%	142,469,000	12,506,000	8.1%
2013	291,903	30,266	9.4%	2,023,642	167,326	7.6%	143,929,000	11,460,000	7.4%
2014	297,523	25,430	7.9%	2,079,565	143,413	6.5%	146,305,000	9,617,000	6.2%
2015	303,401	24,166	7.4%	2,134,244	135,095	6.0%	148,834,000	8,296,000	5.3%
2016	309,399	19,902	6.0%	2,179,521	114,145	5.0%	151,436,000	7,751,000	4.9%
2017	315,203	17,055	5.1%	2,213,894	98,757	4.3%	153,337,000	6,982,000	4.4%

Source: SC Department of Employment & Workforce

Monthly Unemployment Rate (Unadjusted)

Past 13 Months



Period	NESA	South Carolina	United States
Oct-2017	4.9%	4.2%	3.9%
Nov-2017	4.8%	4.0%	3.9%
Dec-2017	5.3%	4.2%	3.9%
Jan-2018	6.5%	5.0%	4.5%
Feb-2018	5.9%	4.6%	4.4%
Mar-2018	5.0%	4.1%	4.1%
Apr-2018	3.5%	2.8%	3.7%
May-2018	3.4%	2.8%	3.6%
Jun-2018	4.1%	3.6%	4.2%
Jul-2018	4.0%	3.5%	4.1%
Aug-2018	4.3%	3.7%	3.9%
Sep-2018	4.0%	3.3%	3.6%
Oct-2018	4.1%	3.3%	3.5%

Source: SC Department of Employment & Workforce

Area Job Openings

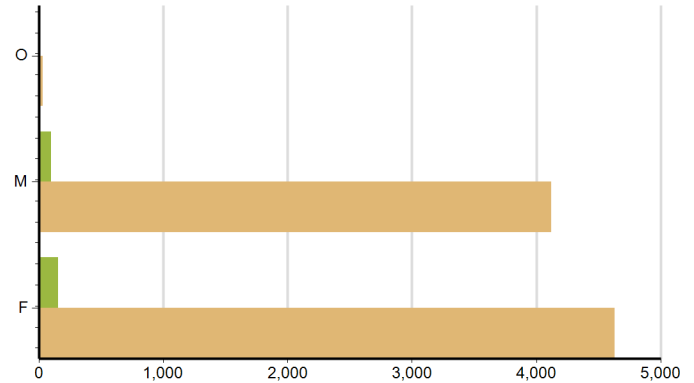
Period	NESAS				South Carolina			
	Employed	Unemployed	Unemp Rate	Job Openings	Employed	Unemployed	Unemp Rate	Job Openings
Oct-2017	314,648	16,383	4.9%	6,842	2,221,475	97,934	4.2%	57,940
Nov-2017	312,423	15,865	4.8%	6,171	2,221,189	97,944	4.2%	60,228
Dec-2017	309,537	17,476	5.3%	5,781	2,220,845	97,879	4.2%	56,028
Jan-2018	308,148	21,425	6.5%	6,114	2,221,051	100,182	4.3%	51,746
Feb-2018	312,500	19,469	5.9%	6,486	2,223,397	101,415	4.4%	57,596
Mar-2018	316,239	16,647	5.0%	7,570	2,225,252	102,079	4.4%	59,107
Apr-2018	319,944	11,439	3.5%	7,795	2,225,655	97,929	4.2%	64,770
May-2018	323,251	11,267	3.4%	7,312	2,225,414	92,505	4.0%	61,940
Jun-2018	328,455	14,002	4.1%	7,786	2,225,973	87,096	3.8%	57,230
Jul-2018	329,628	13,852	4.0%	7,522	2,227,550	82,339	3.6%	62,943
Aug-2018	323,149	14,513	4.3%	7,796	2,227,762	78,758	3.4%	63,496
Sep-2018	317,664	13,299	4.0%	5,666	2,227,597	76,741	3.3%	61,190
Oct-2018	318,299	13,471	4.1%	5,908	2,231,027	76,220	3.3%	55,358

Source: SC Department of Employment & Workforce, The Conference Board's Help Wanted OnLine® Data Series
 South Carolina Data is Seasonally Adjusted

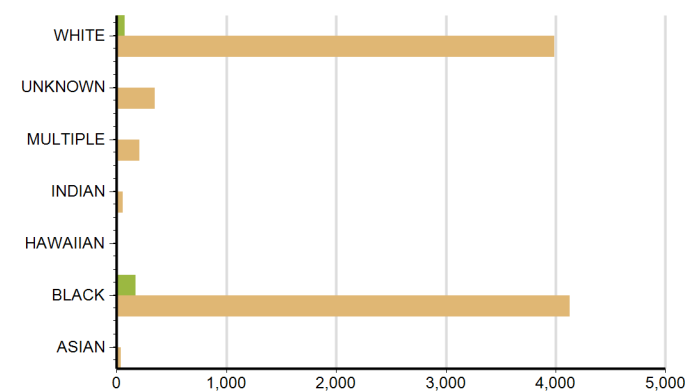
Characteristics of Unemployment Insurance Claimants

October-2018

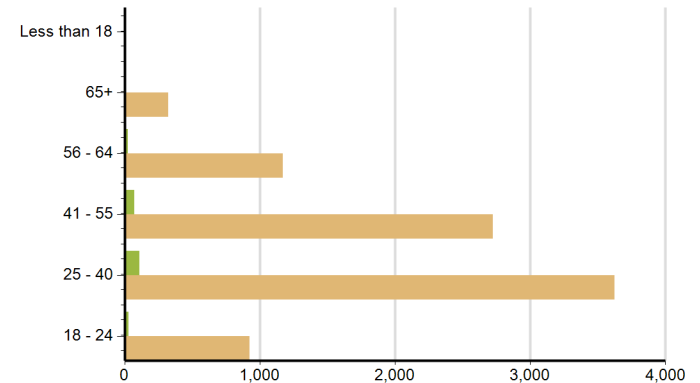
Gender	NESA	South Carolina
Male	98	4,121
Female	156	4,628
Female	3	33



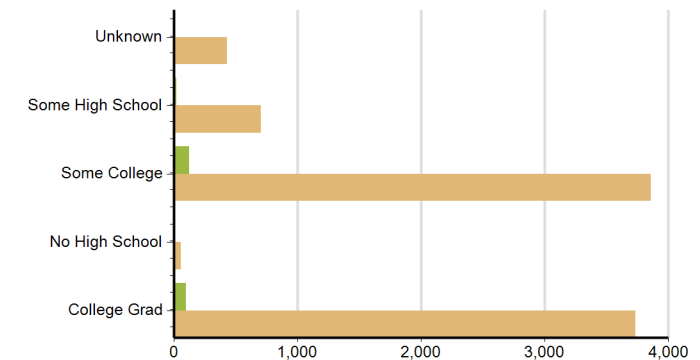
Race	NESA	South Carolina
MULTIPLE	7	210
ASIAN	1	36
WHITE	71	3,991
INDIAN	3	55
UNKNOWN	5	349
BLACK	170	4,130



Age Group	NESA	South Carolina
56 - 64	28	1,170
18 - 24	32	925
65+	13	325
25 - 40	113	3,626
41 - 55	71	2,723



Education	NESA	South Carolina
Some College	125	3,860
College Grad	98	3,734
Some High School	23	702
No High School	1	57
Unknown	10	429

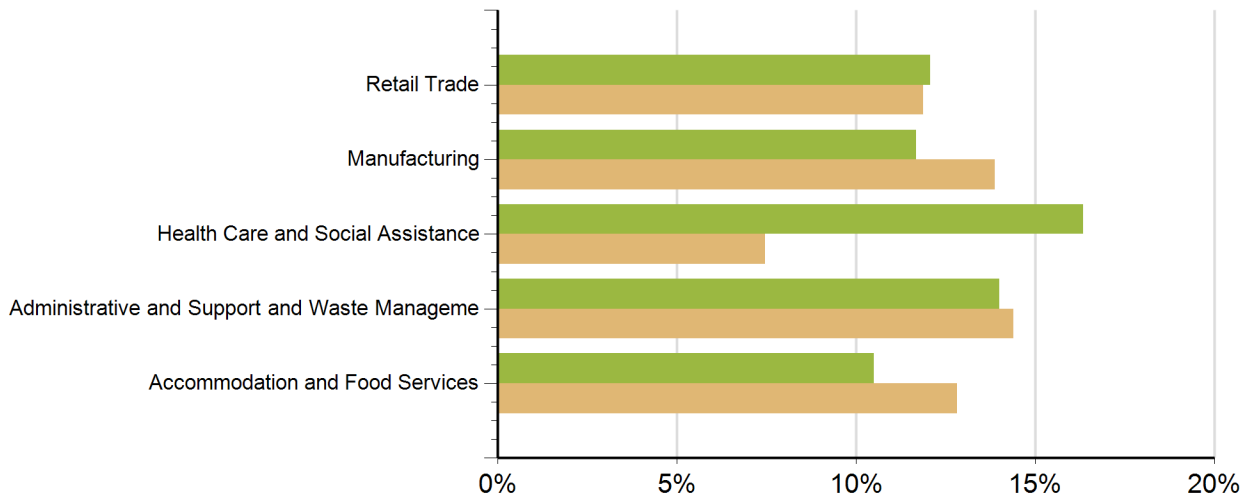


Source: SC Department of Employment & Workforce

Characteristics of Unemployment Insurance Claims by Industry

Industry Groups with Largest Number of Claims

October-2018



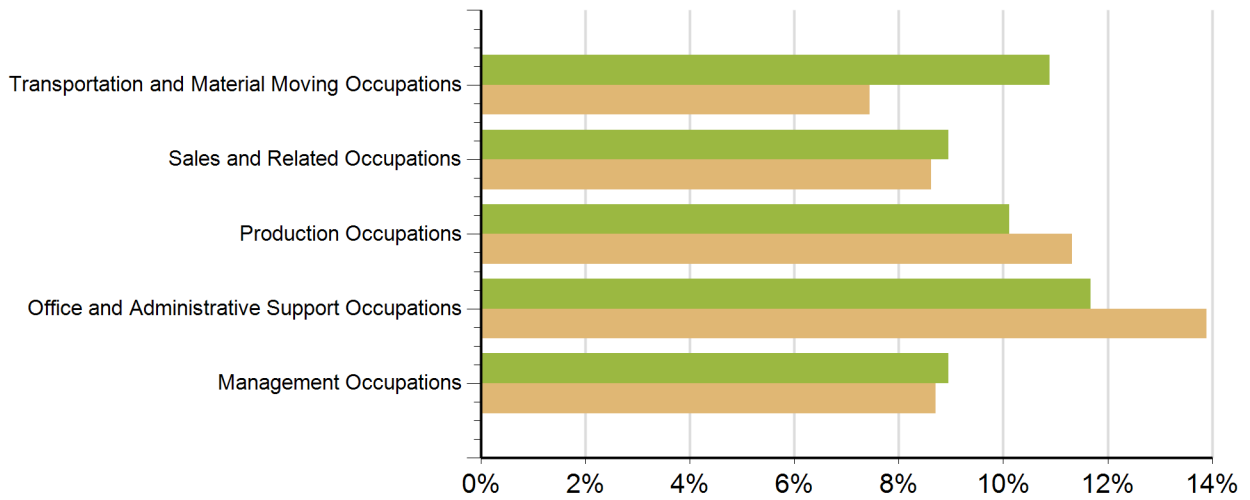
Industry	NESA	South Carolina
Manufacturing	30	1,224
Arts, Entertainment, and Recreation	1	129
Information	1	92
Other Services (except Public Administration)	5	152
Health Care and Social Assistance	42	659
Wholesale Trade	6	309
Public Administration	8	151
Transportation and Warehousing	11	232
Educational Services	5	158
Utilities	1	13
Professional, Scientific, and Technical Servi	10	439
Retail Trade	31	1,048
Administrative and Support and Waste Manageme	36	1,270
Unknown	19	789
Accommodation and Food Services	27	1,131
Agriculture, Forestry, Fishing and Hunting	7	70
Construction	14	516
Finance and Insurance	3	199

Source: SC Department of Employment & Workforce

Characteristics of Unemployment Insurance Claims by Occupation

Occupation Groups with Largest Number of Claims

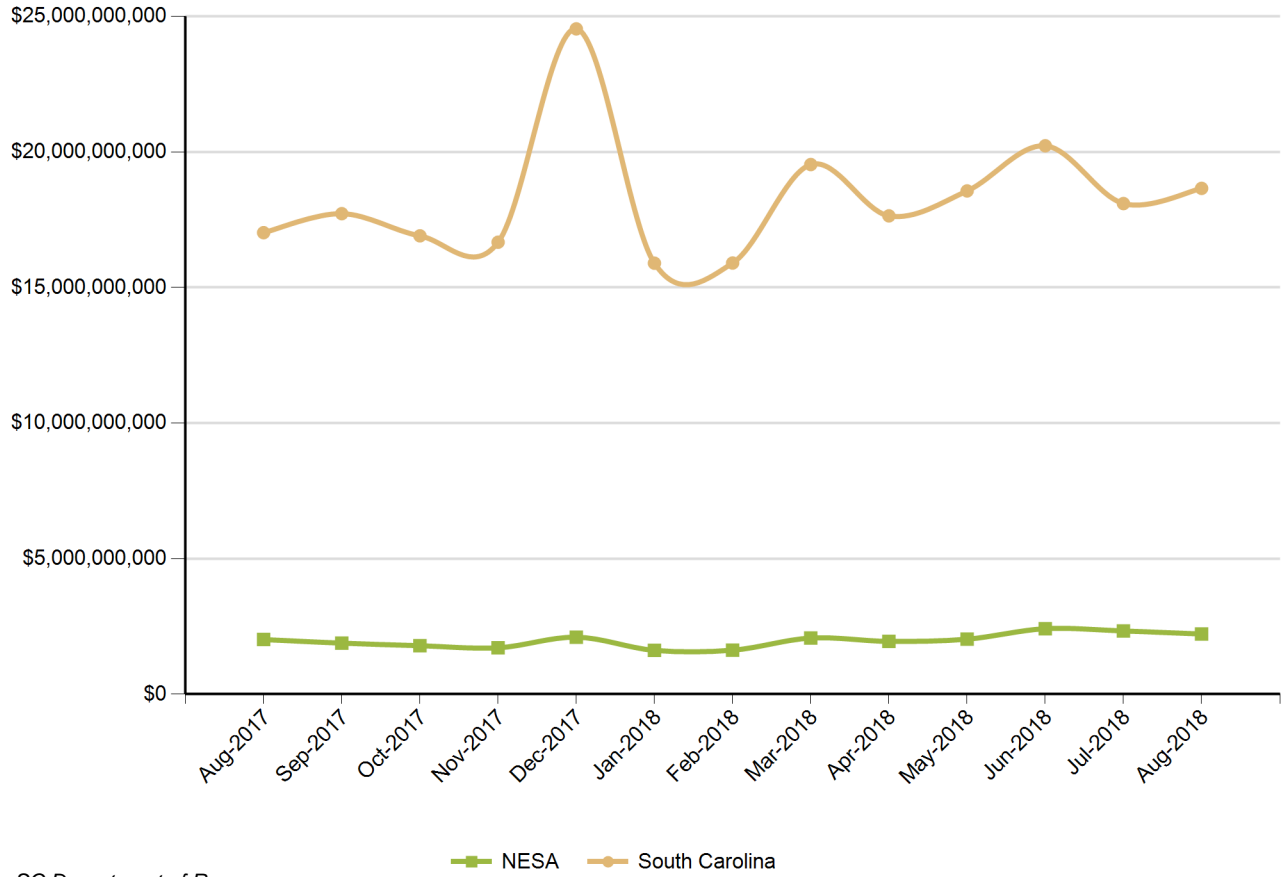
October-2018



Occupation	NESA	South Carolina
Architecture and Engineering Occupations	8	215
Building and Grounds Cleaning and Maintenance Occu	8	403
Business and Financial Operations Occupations	9	260
Community and Social Service Occupations	2	62
Computer and Mathematical Occupations	1	137
Construction and Extraction Occupations	14	430
Educational Instruction and Library Occupations	4	136
Farming, Fishing, and Forestry Occupations	3	55
Food Preparation and Serving Related Occupations	13	744
Healthcare Practitioners and Technical Occupations	4	206
Healthcare Support Occupations	20	237
Installation, Maintenance, and Repair Occupations	13	371
Life, Physical, and Social Science Occupations	3	76
Management Occupations	23	769
Office and Administrative Support Occupations	30	1,226
Personal Care and Service Occupations	7	127
Production Occupations	26	999
Protective Service Occupations	3	102
Sales and Related Occupations	23	761
Transportation and Material Moving Occupations	28	657
Unknown	15	718

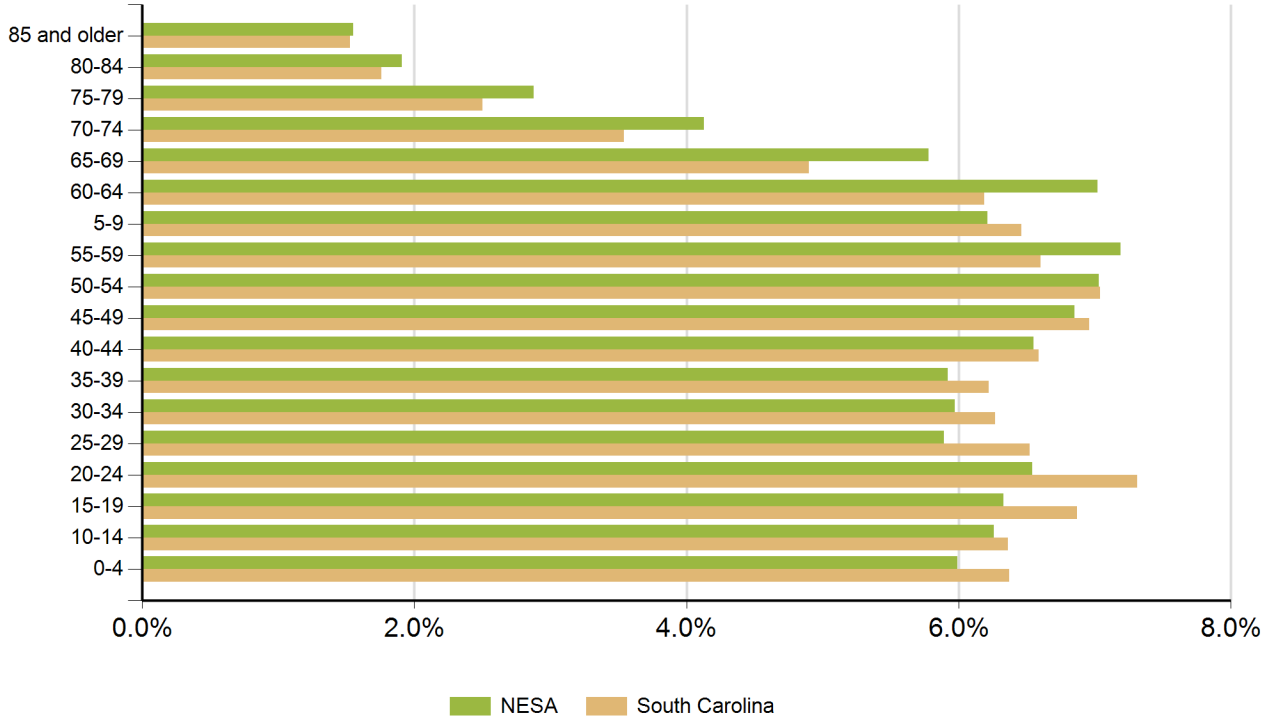
Source: SC Department of Employment & Workforce

Retail Sales



Source: SC Department of Revenue

Population by Age



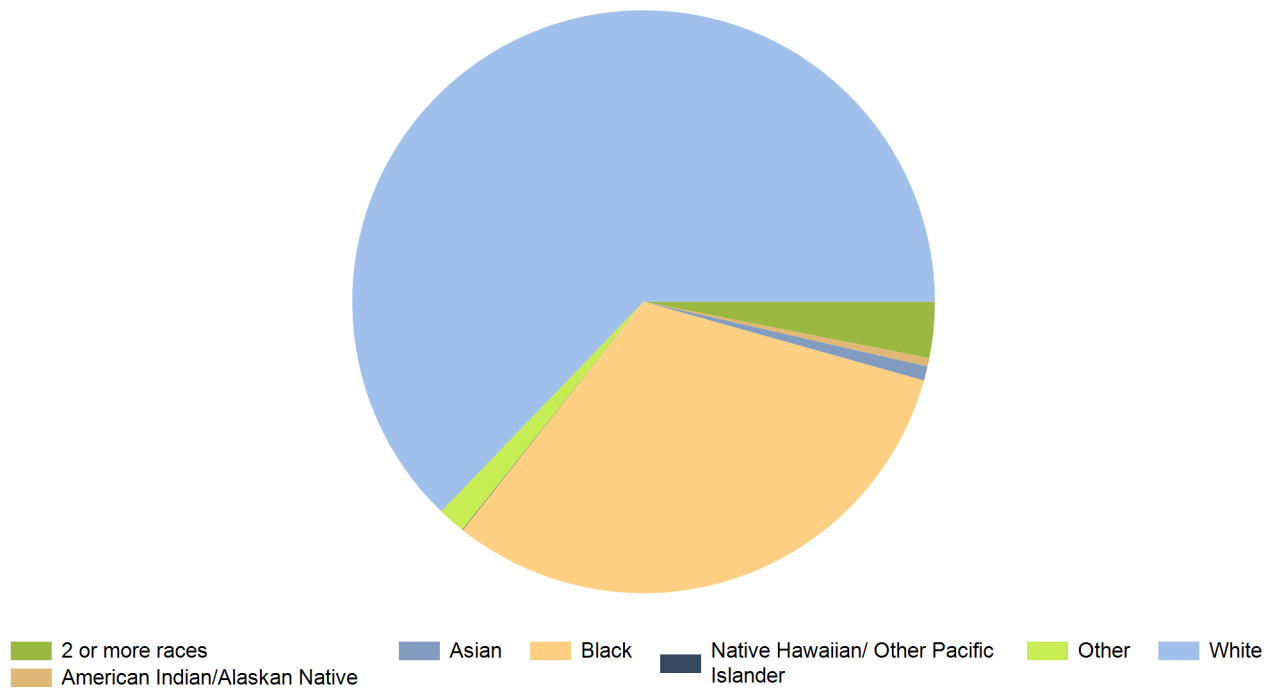
Age Range	NESA	South Carolina	United States
0-4	42,869	298,242	20,052,112
5-9	44,482	302,111	20,409,060
10-14	44,816	297,443	20,672,609
15-19	45,304	321,540	21,715,074
20-24	46,812	342,237	22,099,887
25-29	42,138	305,167	21,243,365
30-34	42,753	293,464	20,467,912
35-39	42,405	291,183	19,876,161
40-44	46,911	308,158	20,998,001
45-49	49,075	325,660	22,109,946
50-54	50,354	329,431	22,396,322
55-59	51,493	309,061	20,165,892
60-64	50,260	289,690	17,479,211
65-69	41,371	229,251	13,189,508
70-74	29,573	165,797	9,767,522
75-79	20,636	117,187	7,438,750
80-84	13,641	82,223	5,781,697
85 and older	11,108	71,757	5,673,565

Source: US Census Bureau, American Community Survey

Population by Race

Race	NESA	%	South Carolina	%	United States	%
White	456,568	62.8%	3,144,146	66.0%	230,592,579	72.0%
Black	227,677	31.3%	1,298,534	27.3%	39,167,010	12.2%
American Indian/Alaskan Native	3,377	0.5%	14,732	0.3%	2,540,309	0.8%
Asian	5,738	0.8%	61,097	1.3%	15,231,962	4.8%
Native Hawaiian/ Other Pacific Islander	236	0.0%	2,128	0.0%	526,347	0.2%
2 or more races	22,584	3.1%	169,670	3.6%	17,464,666	5.5%
Other	11,113	1.5%	74,130	1.6%	14,746,054	4.6%

Source: US Census Bureau, American Community Survey



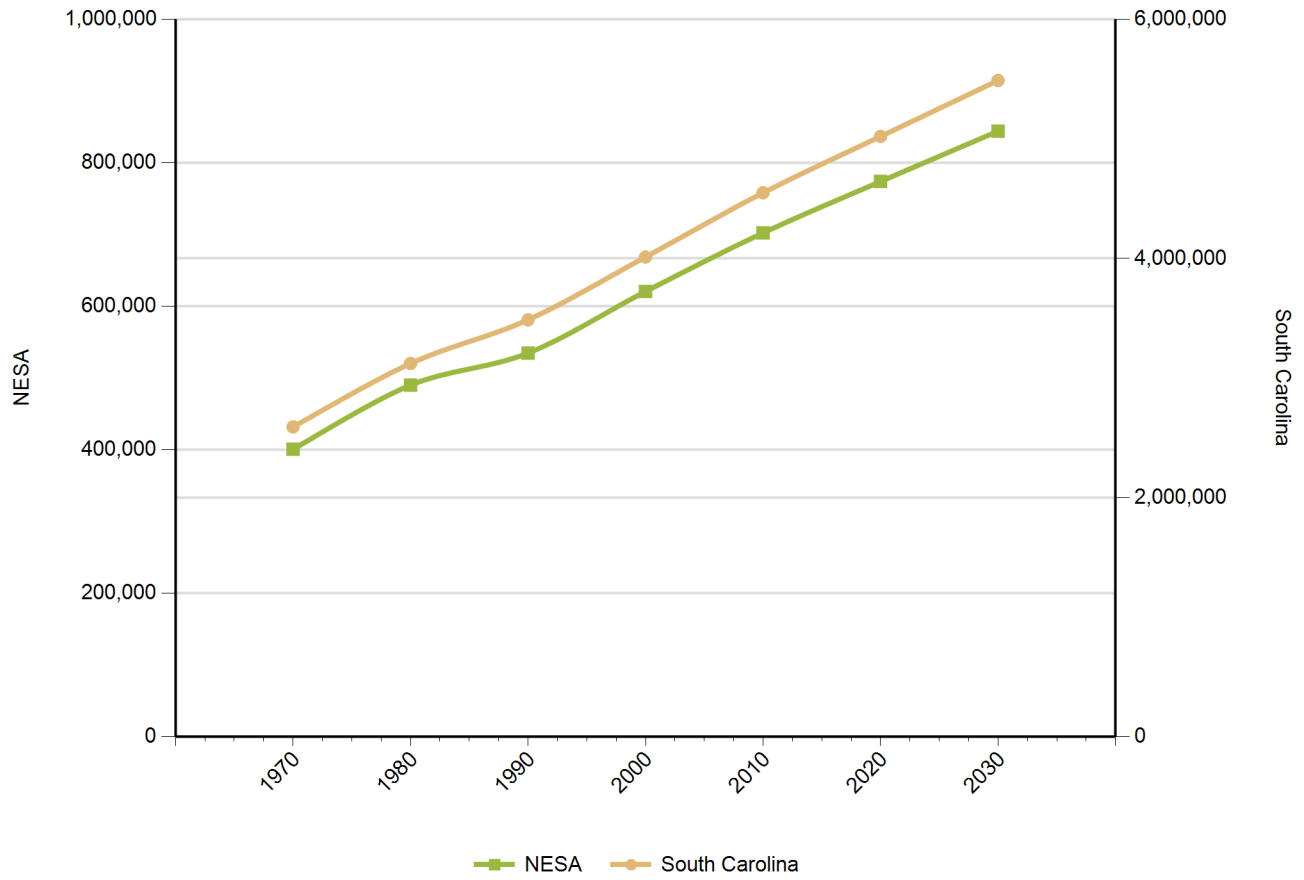
Population by Gender

Gender	NESA	South Carolina	United States
Female	371,406	2,403,297	158,289,182
Male	344,595	2,276,305	153,247,412

Source: US Census Bureau, American Community Survey

Population Change

Historical and Projected



Year	NESA	South Carolina
1970	400,739	2,590,713
1980	490,043	3,121,820
1990	534,669	3,486,310
2000	620,572	4,012,012
2010	702,270	4,549,150
2020	773,900	5,020,400
2030	844,120	5,488,460

Source: US Census Bureau

Employers by Size of Establishment

Employees	NESA	South Carolina
0 to 4	9,656	79,582
5 to 9	3,194	20,165
10 to 19	2,417	15,299
20 to 49	1,679	11,617
50 to 99	620	4,503
100 to 249	302	2,790
250 to 499	82	854
500 to 999	25	391
1000 +	15	304

Employment by Size of Establishment

Employees	NESA	South Carolina
0 to 4	15,122	112,852
5 to 9	21,473	134,677
10 to 19	32,881	207,583
20 to 49	51,196	354,792
50 to 99	42,453	310,957
100 to 249	44,500	422,086
250 to 499	27,321	293,191
500 to 999	17,215	263,096
1000 +	30,319	764,813

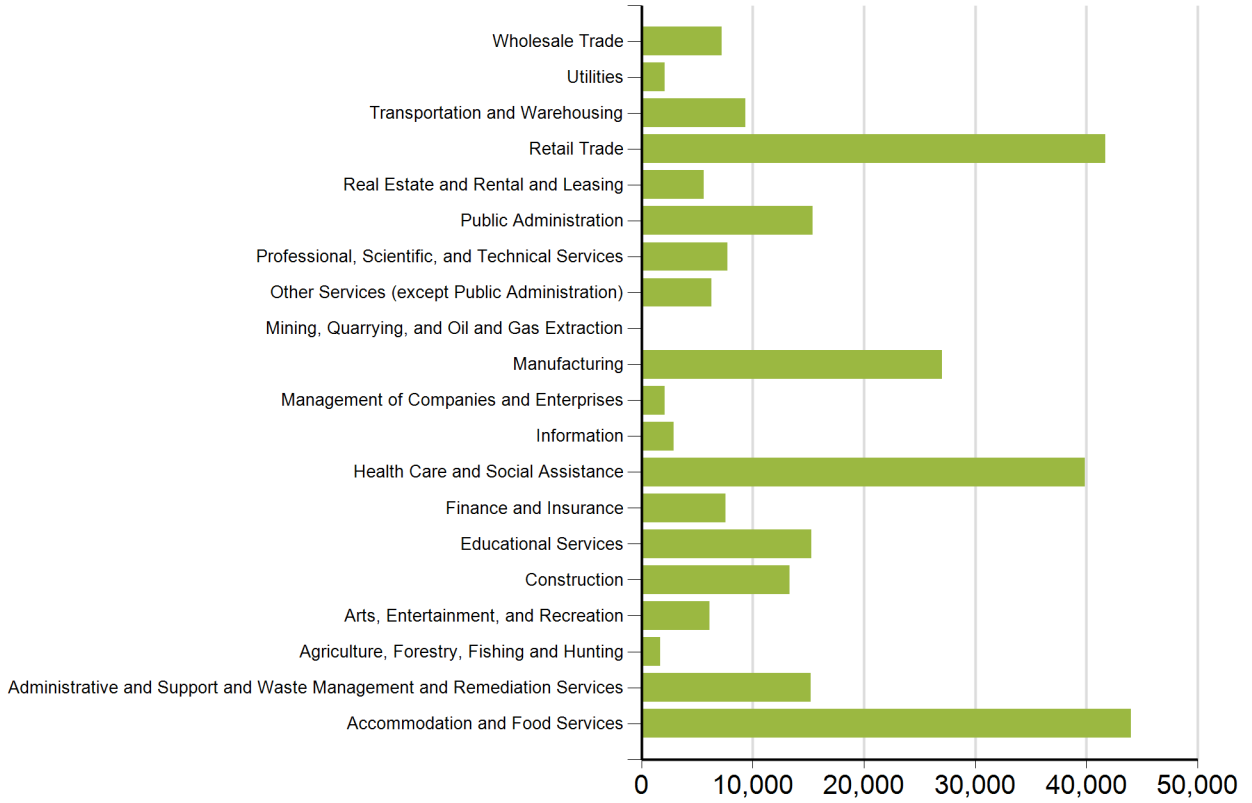
Source: SC Department of Employment & Workforce - Q1 2018

20 Largestest Employers *(Listed Alphabetically)*

Corporation Name
HORRY COUNTY DEPARTMENT OF EDUCATIO
WAL-MART ASSOCIATES INC
MCLEOD REGIONAL MEDICAL CENTER
FLORENCE PUBLIC SCHOOL DISTRICT #1
HORRY COUNTY COUNCIL
SCHAEFFLER GROUP USA INC
COASTAL CAROLINA UNIVERSITY
FOOD LION LLC
DARLINGTON COUNTY SCHOOL DISTRICT
GEORGETOWN HOSPITAL SYSTEM
WYNDHAM VACATION OWNERSHIP INC
GEORGETOWN COUNTY DEPT OF EDUCATION
GRAND STRAND REGIONAL MEDICAL CENTE
CAROLINAS HOSPITAL SYSTEM
ASSURANT GROUP
SONOCO PRODUCTS COMPANY
MCLEOD PHYSICIAN ASSOCIATES II
SOUTHEAST RESTAURANTS CORPORATION
CITY OF MYRTLE BEACH
CONBRACO INDUSTRIES INC

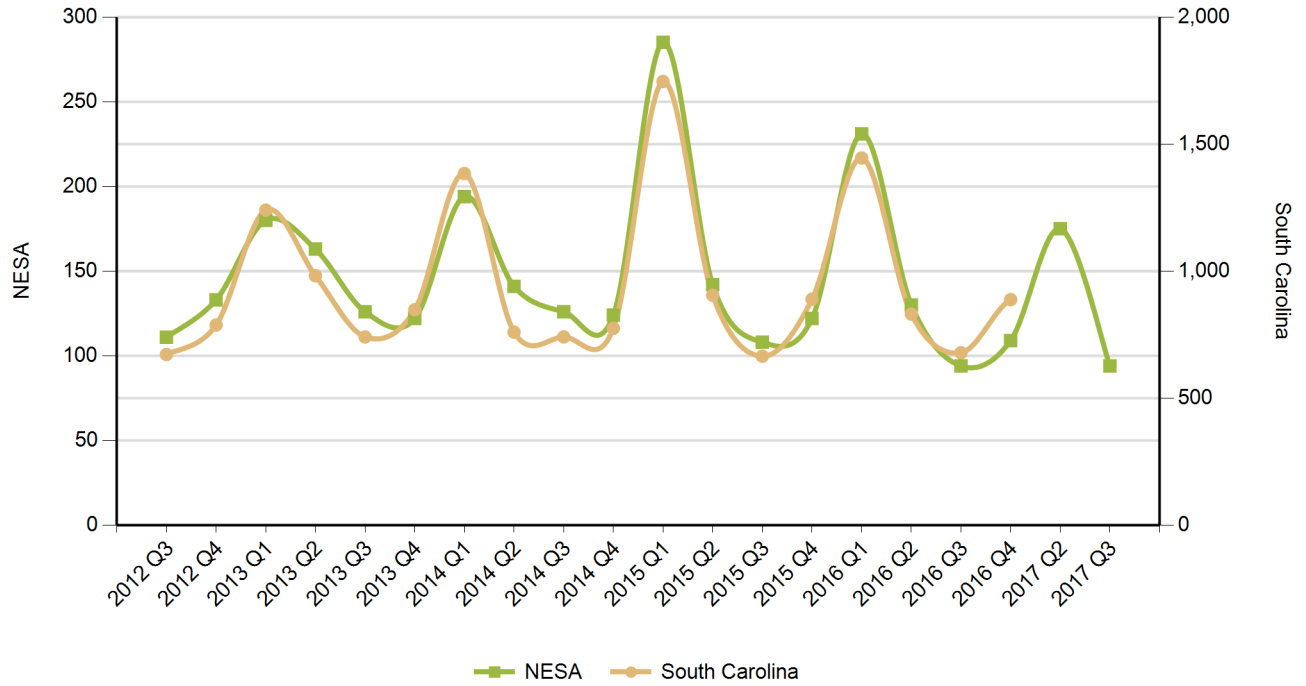
Source: SC Department of Employment & Workforce - Q1 2018

Employment by Industry



Source: SC Department of Employment & Workforce
 Quarterly Census of Employment and Wages (QCEW) - Q1 2018

New Startup Firms



Quarter	NESA	South Carolina
2017 Q3	94	
2017 Q2	175	
2016 Q4	109	888
2016 Q3	94	679
2016 Q2	130	831
2016 Q1	231	1,445
2015 Q4	122	889
2015 Q3	108	665
2015 Q2	142	905
2015 Q1	285	1,746
2014 Q4	124	775
2014 Q3	126	741
2014 Q2	141	760
2014 Q1	194	1,384
2013 Q4	122	848
2013 Q3	126	741
2013 Q2	163	982
2013 Q1	180	1,240
2012 Q4	133	788
2012 Q3	111	672

Note: A firm is included in the count when it does not have a UI Account Number in the previous quarter and has a Setup Date that falls in the quarter displayed.

Source: SC Department of Employment & Workforce

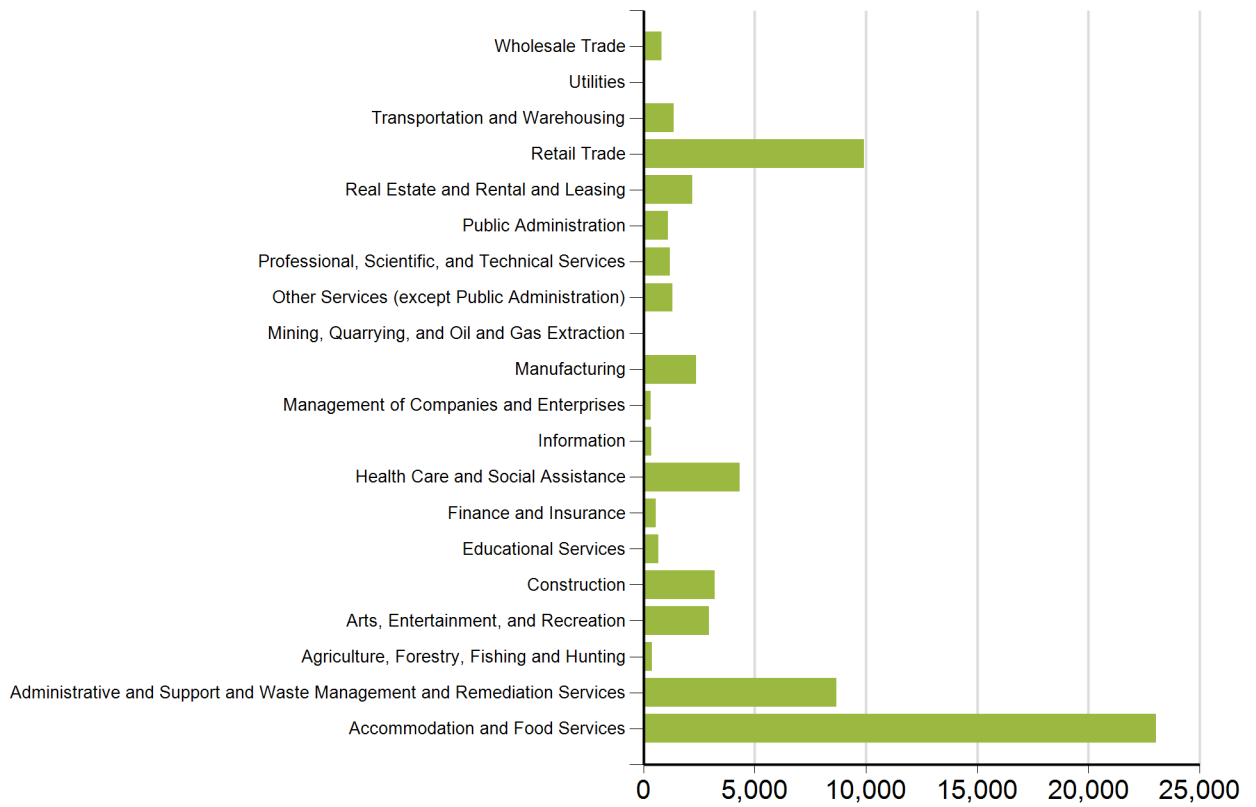
Top 20 Occupational Openings

April 2016

Occupation Name (Soccode)	Job Opening
Registered Nurses (29-1141)	806
Heavy and Tractor-Trailer Truck Drivers (53-3032)	610
Retail Salespersons (41-2031)	268
First-Line Supervisors of Retail Sales Workers (41-1011)	263
First-Line Supervisors of Food Preparation and Serving Workers (35-1012)	238
Maids and Housekeeping Cleaners (37-2012)	210
Maintenance and Repair Workers, General (49-9071)	183
Physical Therapists (29-1123)	160
Hotel, Motel, and Resort Desk Clerks (43-4081)	154
Customer Service Representatives (43-4051)	138
Waiters and Waitresses (35-3031)	135
Landscaping and Groundskeeping Workers (37-3011)	124
Automotive Service Technicians and Mechanics (49-3023)	108
First-Line Supervisors of Office and Administrative Support Workers (43-1011)	105
Janitors and Cleaners, Except Maids and Housekeeping Cleaners (37-2011)	99
Speech-Language Pathologists (29-1127)	98
Occupational Therapists (29-1122)	96
Cooks, Restaurant (35-2014)	94
Medical and Health Services Managers (11-9111)	87
Licensed Practical and Licensed Vocational Nurses (29-2061)	85

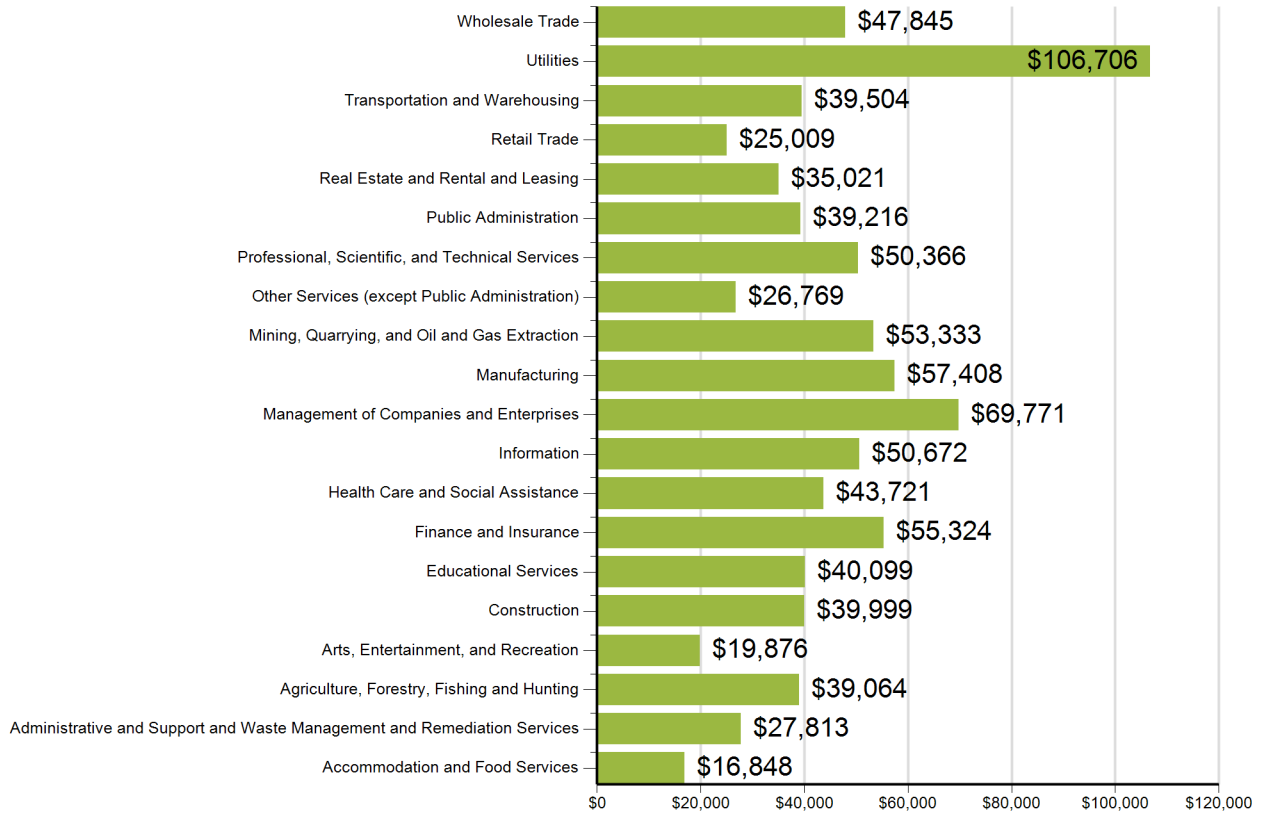
Source: SC Department of Employment & Workforce and The Conference Board's Help Wanted OnLine® Data Series

New Hires by Industry



US Census Bureau, Local Employment Dynamics - Q2 2016

Average Annual Wage by Industry



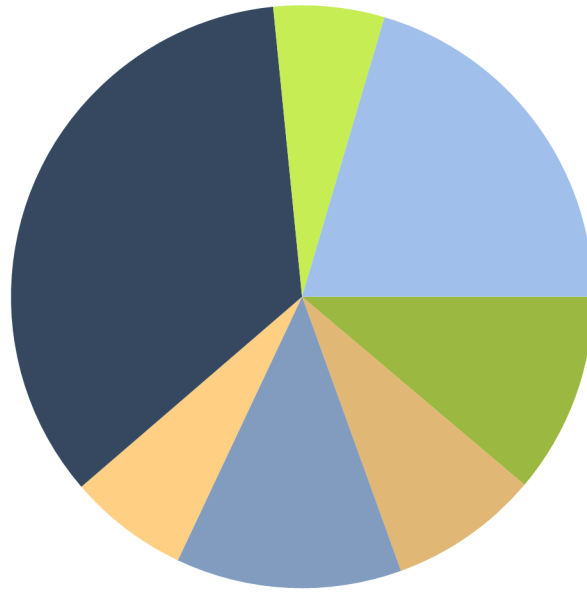
Source: SC Department of Employment & Workforce
 Quarterly Census of Employment and Wages (QCEW) - Q1
 2018

Age of Workers by Industry

Industry	14-18	19-21	22-24	25-34	35-44	45-54	55-64	65+
Total, All Industries	6,174	12,950	17,295	57,601	57,933	59,917	46,835	17,971
Agriculture, Forestry, Fishing and Hunting	8	52	56	278	391	453	379	222
Mining, Quarrying, and Oil and Gas Extraction	0	0	0	21	22	40	30	0
Utilities	0	0	36	296	323	376	301	77
Construction	64	439	727	2,882	3,259	3,234	2,300	797
Manufacturing	74	555	1,163	4,890	6,213	7,771	5,916	1,146
Wholesale Trade	38	155	280	1,351	1,660	1,861	1,495	556
Retail Trade	1,424	3,302	3,255	8,039	6,631	7,243	6,019	3,100
Transportation and Warehousing	18	242	443	1,408	1,666	1,882	1,405	432
Information	56	94	197	723	868	764	424	125
Finance and Insurance	9	82	272	1,723	1,819	1,518	1,222	420
Real Estate and Rental and Leasing	30	144	292	1,049	1,246	1,442	1,343	672
Professional and Technical Services	62	224	400	1,879	1,996	1,945	1,518	725
Management of Companies and Enterprises	17	62	90	387	463	523	361	166
Administrative and Waste Services	109	904	1,589	4,521	3,707	3,338	2,347	1,035
Educational Services	20	151	545	3,639	4,929	5,794	5,403	1,766
Health Care and Social Assistance	75	673	1,630	7,942	9,133	8,932	7,109	2,152
Arts, Entertainment, and Recreation	283	437	555	1,255	1,057	1,043	1,085	1,083
Accommodation and Food Services	3,709	4,982	4,873	11,516	8,387	6,892	4,328	1,821
Other Services, Except Public Administration	84	240	330	1,091	1,161	1,417	1,087	655
Public Administration	49	168	528	2,669	2,931	3,369	2,698	991

Source: US Census Bureau, Local Employment Dynamics - Q2 2016

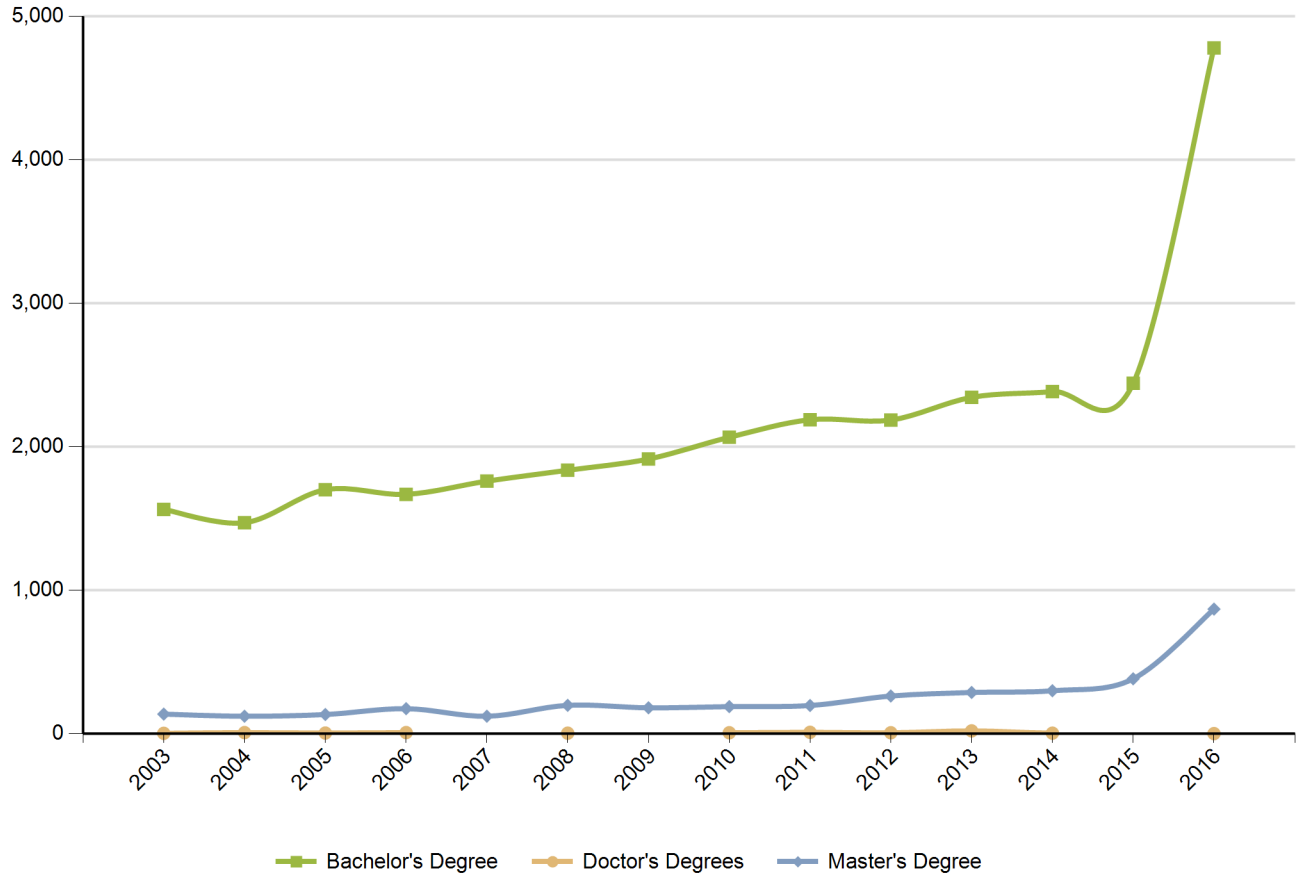
Educational Attainment *(Population 25 Years and Older)*



9th to 12th No Diploma
 Bachelor's Degree
 High School Graduate
 Some College
 Associate's Degree
 Graduate Degree
 Less Than 9th Grade

Source: US Census Bureau, American Community Survey - 2013 5-Year Estimates

Graduate Trends



Source: Institute of Education Sciences (IES), Integrated Postsecondary Education Data System

Educational Institutions

Academy for Careers and Technology
2697 E Hwy 76

Mullins, SC 29574
843.423.1941
<http://www.mcact.org>
2016 Degrees Awarded: 36

Coker College
300 E College Ave

Hartsville, SC 29550
843.383.8000
<http://coker.edu>
2016 Degrees Awarded: 552

Francis Marion University
4822 East Palmetto Street

Florence, SC 29506
843.661.1362
<http://www.fmarion.edu>
2016 Degrees Awarded: 1410

Horry-Georgetown Technical College
2050 Highway 501 East

Conway, SC 29526
843.347.3186
<http://www.hgtc.edu>
2016 Degrees Awarded: 3146

Miller-Motte Technical College-Conway
2541 Highway 501 East

Conway, SC 29526
843.591.1100
<http://www.miller-motte.edu>
2016 Degrees Awarded: 836

Strand College of Hair Design
423 79th Ave N

Myrtle Beach, SC 29572
843.467.2397
<http://www.strandcollege.com>
2016 Degrees Awarded: 56

Williamsburg Technical College
601 Martin Luther King Jr Ave

Kingstree, SC 29556
843.355.4110
<http://www.wiltech.edu>
2016 Degrees Awarded: 404

Coastal Carolina University
103 Tom Trout Drive

Conway, SC 29526
843.347.3161
<http://www.coastal.edu>
2016 Degrees Awarded: 3718

Florence-Darlington Technical College
2715 W. Lucas Street

Florence, SC 29501
843.661.8324
<http://WWW.FDTC.EDU>
2016 Degrees Awarded: 1918

Golf Academy of America-Myrtle Beach
3268 Waccamaw Blvd.

Myrtle Beach, SC 29579
800.342.7342
<http://www.golfacademy.edu>
2016 Degrees Awarded: 222

Kenneth Shuler School of Cosmetology-Florence
2443 West Lucas Street

Florence, SC 29501
843.679.3778
<http://www.kennethshuler.com>
2016 Degrees Awarded: 136

Northeastern Technical College
1201 Chesterfield Hwy.

Cheraw, SC 29520
843.921.6900
<http://www.netc.edu>
2016 Degrees Awarded: 444

Virginia College-Florence
2400 David H. McLeod Blvd

Florence, SC 29501
843.407.2200
<http://www.vc.edu>
2016 Degrees Awarded: 412

Source: Institute of Education Sciences (IES), Integrated Postsecondary Education Data System