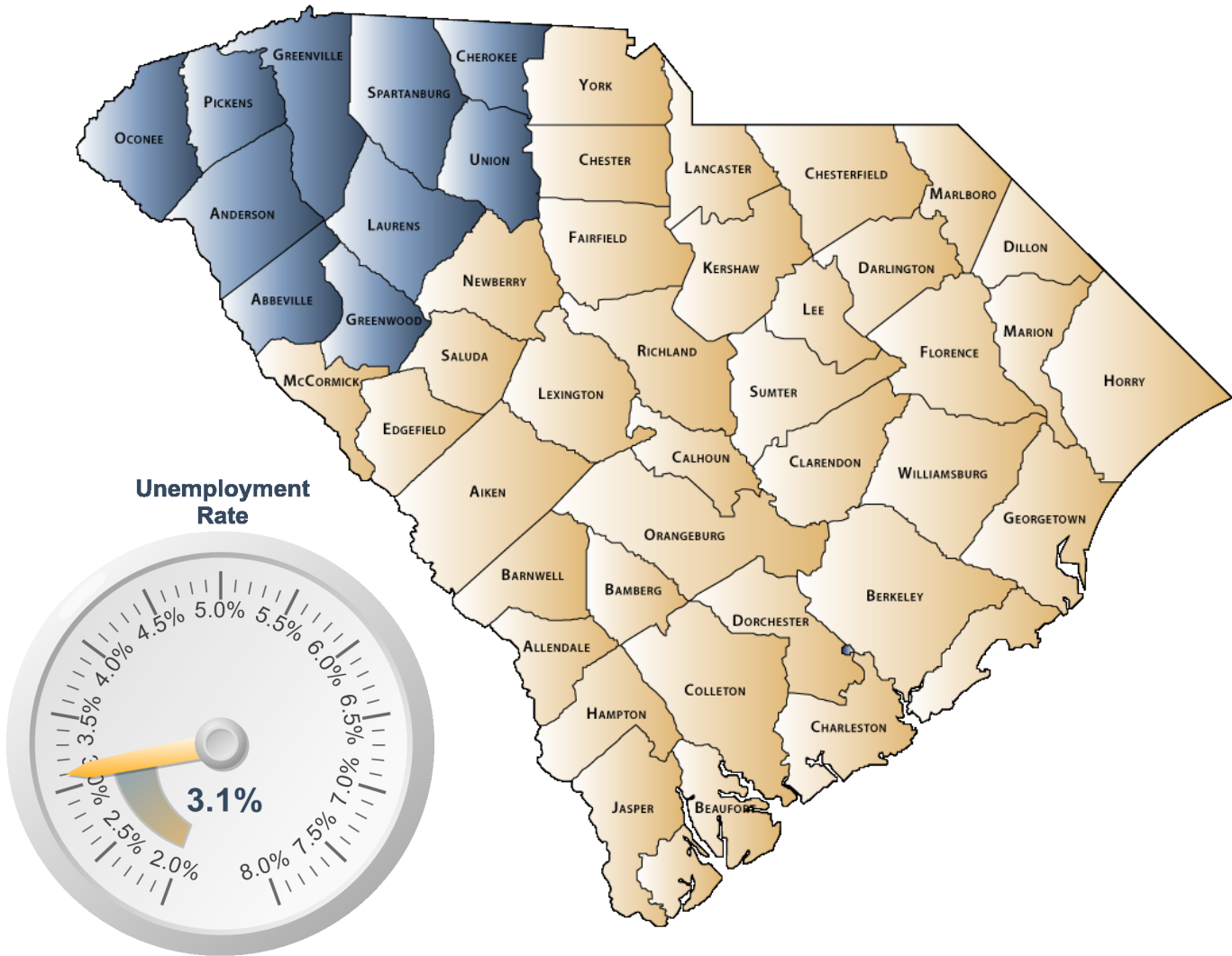


# ECONOMIC PROFILE

Upstate Alliance



**S.C. Department of Employment & Workforce**  
Labor Market Information

1550 Gadsden Street, PO Box 995  
Columbia, SC 29202  
803-737-2660

[www.SCWorkforceInfo.com](http://www.SCWorkforceInfo.com)

## Table of Contents

### 1. Economic Data

Annual Unemployment Rates.....	3
Monthly Unemployment Rates.....	4
Area Job Openings.....	5
Unemployment Insurance	
Demographic Data.....	6
Industry Data.....	7
Occupation Data.....	8
Retail Sales.....	9

### 2. Demographic Data

Population	
Age.....	10
Race.....	11
Gender.....	11
Change.....	12
Employer Data	
Size of Establishments.....	13
Employment by Size of Establishment.....	13
20 Largest Employers.....	14

### 3. Industry Data

Employment by Industry.....	15
New Startup Firms.....	16
Top Occupational Openings.....	17
New Hires by Industry.....	18
Average Annual Wage by Industry.....	19
Age of Workers by Industry.....	20

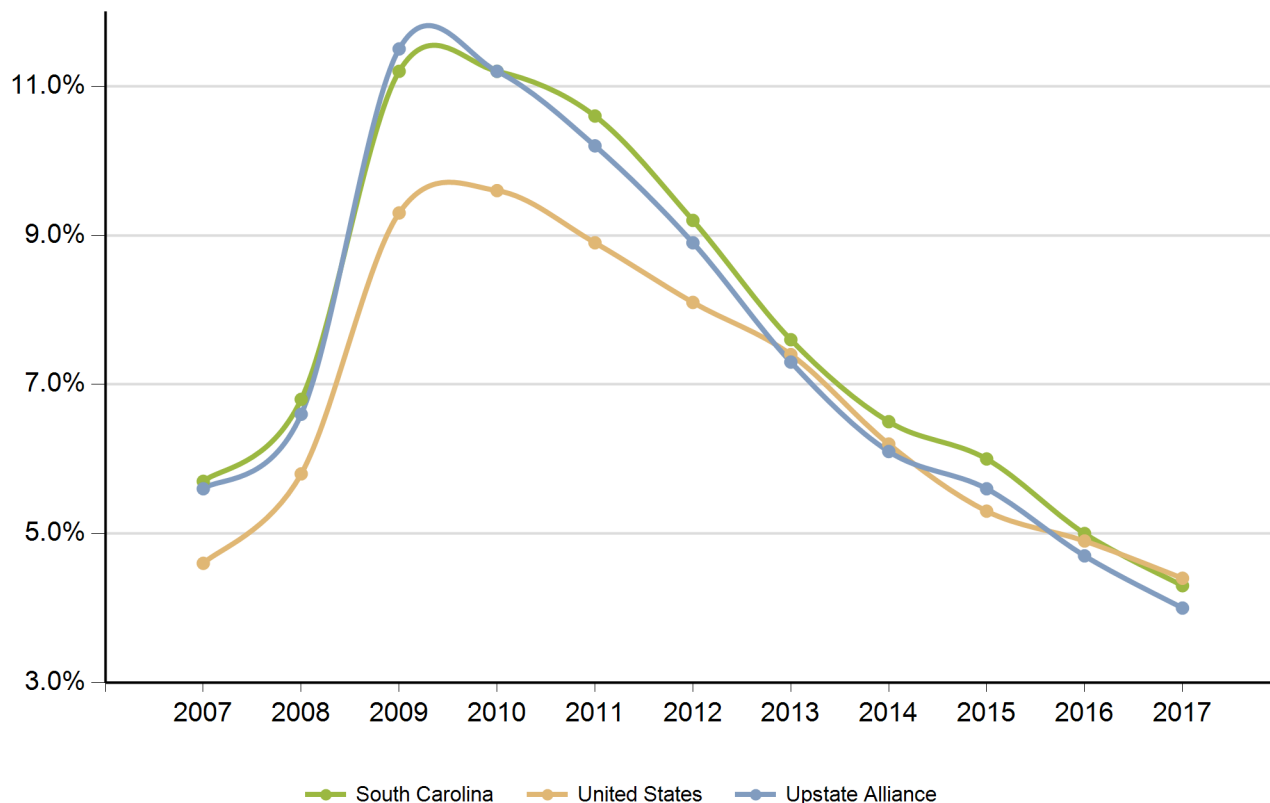
### 4. Education Data

Educational Attainment.....	21
Graduate Trends.....	22
Educational Institutions.....	23

**\*Disclaimer: All data provided is an aggregate of the counties' data that comprise the Upstate Alliance**

### Annual Unemployment Rate (Unadjusted)

Trends

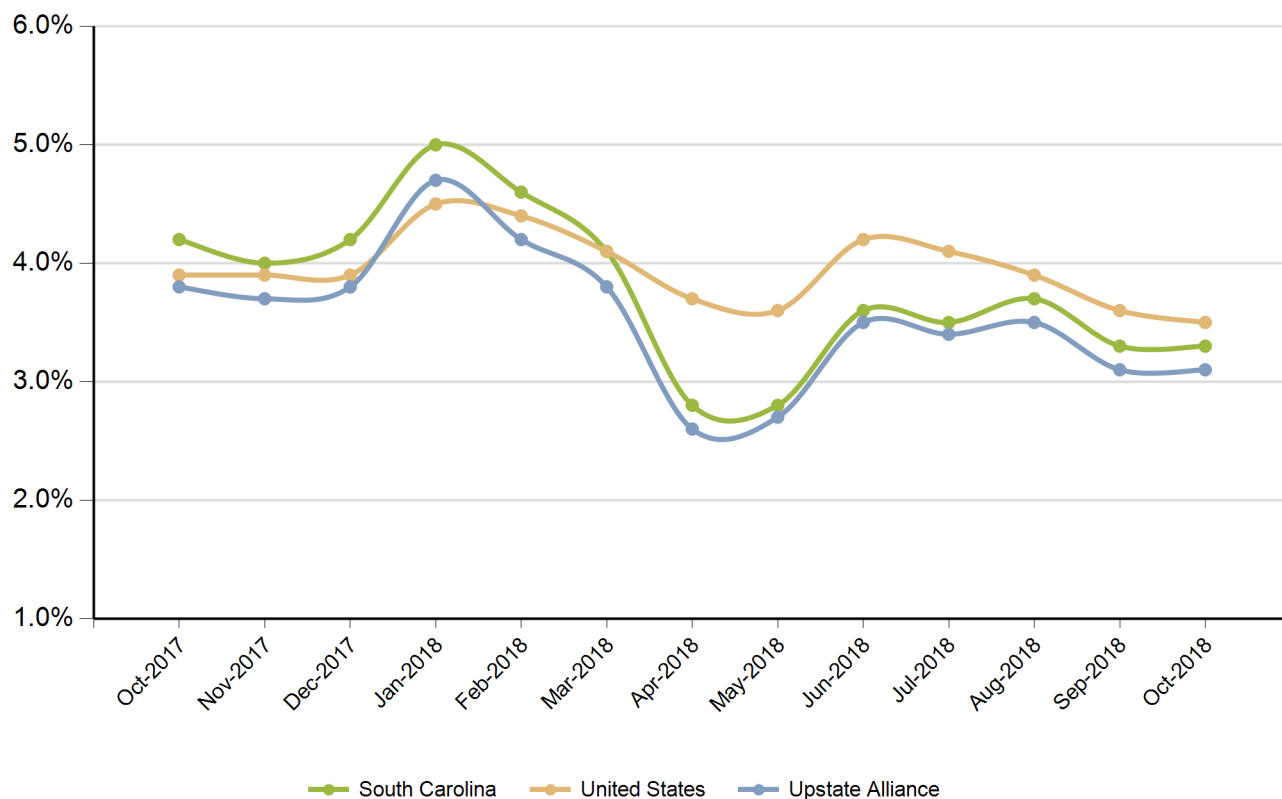


Year	Upstate Alliance			South Carolina			United States		
	Employed	Unemployed	Unemp Rate	Employed	Unemployed	Unemp Rate	Employed	Unemployed	Unemp Rate
2007	605,061	36,071	5.6%	2,005,686	120,205	5.7%	146,047,000	7,078,000	4.6%
2008	603,344	42,487	6.6%	1,996,409	145,823	6.8%	145,362,000	8,924,000	5.8%
2009	570,279	73,883	11.5%	1,910,670	242,075	11.2%	139,877,000	14,265,000	9.3%
2010	562,790	71,278	11.2%	1,915,045	240,623	11.2%	139,064,000	14,825,000	9.6%
2011	574,906	65,476	10.2%	1,945,900	229,623	10.6%	139,869,000	13,747,000	8.9%
2012	586,776	57,149	8.9%	1,985,618	201,260	9.2%	142,469,000	12,506,000	8.1%
2013	600,055	47,311	7.3%	2,023,642	167,326	7.6%	143,929,000	11,460,000	7.4%
2014	615,388	40,112	6.1%	2,079,565	143,413	6.5%	146,305,000	9,617,000	6.2%
2015	631,585	37,217	5.6%	2,134,244	135,095	6.0%	148,834,000	8,296,000	5.3%
2016	642,746	31,510	4.7%	2,179,521	114,145	5.0%	151,436,000	7,751,000	4.9%
2017	654,155	27,288	4.0%	2,213,894	98,757	4.3%	153,337,000	6,982,000	4.4%

Source: SC Department of Employment & Workforce

## Monthly Unemployment Rate (Unadjusted)

Past 13 Months



Period	Upstate Alliance	South Carolina	United States
Oct-2017	3.8%	4.2%	3.9%
Nov-2017	3.7%	4.0%	3.9%
Dec-2017	3.8%	4.2%	3.9%
Jan-2018	4.7%	5.0%	4.5%
Feb-2018	4.2%	4.6%	4.4%
Mar-2018	3.8%	4.1%	4.1%
Apr-2018	2.6%	2.8%	3.7%
May-2018	2.7%	2.8%	3.6%
Jun-2018	3.5%	3.6%	4.2%
Jul-2018	3.4%	3.5%	4.1%
Aug-2018	3.5%	3.7%	3.9%
Sep-2018	3.1%	3.3%	3.6%
Oct-2018	3.1%	3.3%	3.5%

Source: SC Department of Employment & Workforce

## Area Job Openings

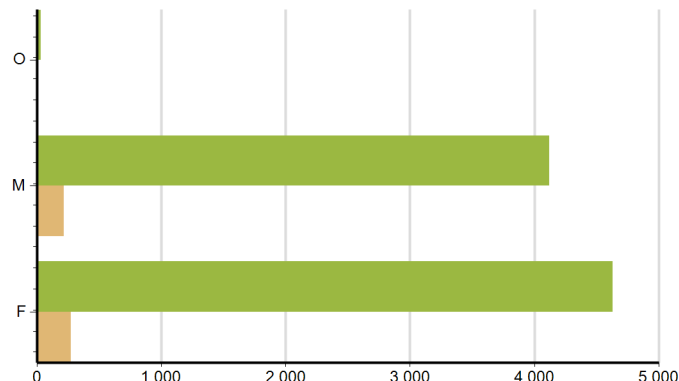
Period	Upstate Alliance				South Carolina			
	Employed	Unemployed	Unemp Rate	Job Openings	Employed	Unemployed	Unemp Rate	Job Openings
Oct-2017	658,284	26,272	3.8%	15,619	2,221,475	97,934	4.2%	57,940
Nov-2017	657,166	25,143	3.7%	14,942	2,221,189	97,944	4.2%	60,228
Dec-2017	656,712	25,909	3.8%	12,869	2,220,845	97,879	4.2%	56,028
Jan-2018	653,356	31,957	4.7%	13,864	2,221,051	100,182	4.3%	51,746
Feb-2018	659,145	29,009	4.2%	13,776	2,223,397	101,415	4.4%	57,596
Mar-2018	661,894	25,909	3.8%	15,409	2,225,252	102,079	4.4%	59,107
Apr-2018	661,150	17,408	2.6%	15,748	2,225,655	97,929	4.2%	64,770
May-2018	660,207	18,080	2.7%	14,477	2,225,414	92,505	4.0%	61,940
Jun-2018	661,454	23,652	3.5%	16,280	2,225,973	87,096	3.8%	57,230
Jul-2018	657,859	23,172	3.4%	16,518	2,227,550	82,339	3.6%	62,943
Aug-2018	653,324	23,638	3.5%	17,371	2,227,762	78,758	3.4%	63,496
Sep-2018	655,864	20,867	3.1%	13,768	2,227,597	76,741	3.3%	61,190
Oct-2018	662,263	21,166	3.1%	14,368	2,231,027	76,220	3.3%	55,358

Source: SC Department of Employment & Workforce, The Conference Board's Help Wanted OnLine® Data Series  
South Carolina Data is Seasonally Adjusted

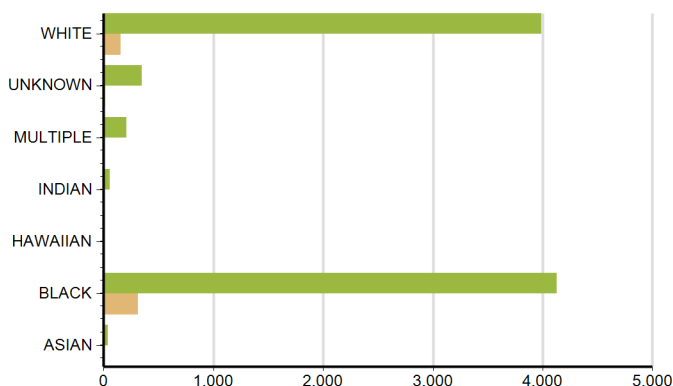
# Characteristics of Unemployment Insurance Claimants

October-2018

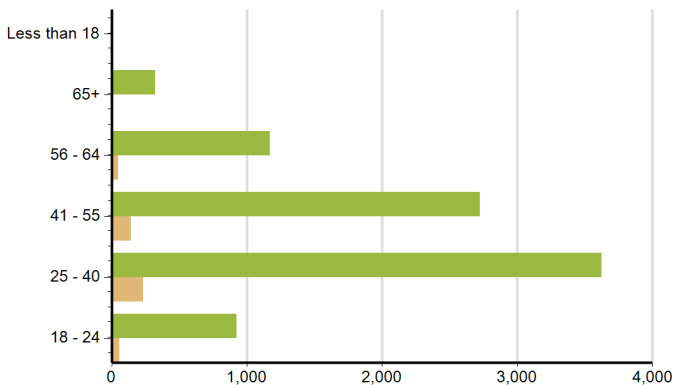
Gender	Upstate Alliance	South Carolina
Male	217	4,121
Female	4	33
Female	275	4,628



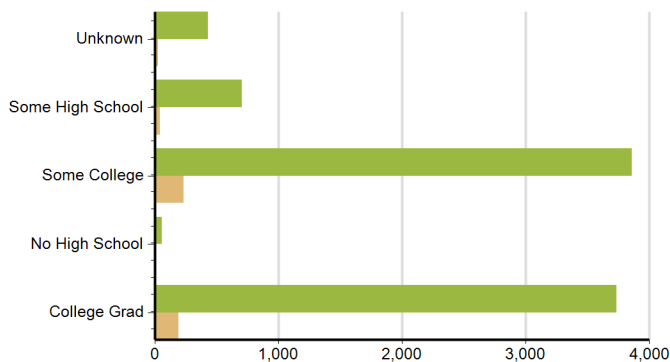
Race	Upstate Alliance	South Carolina
ASIAN	1	36
INDIAN	3	55
UNKNOWN	15	349
MULTIPLE	7	210
HAWAIIAN	1	11
WHITE	156	3,991
BLACK	313	4,130



Age Group	Upstate Alliance	South Carolina
Less than 18	2	13
41 - 55	144	2,723
25 - 40	235	3,626
56 - 64	49	1,170
65+	7	325
18 - 24	59	925



Education	Upstate Alliance	South Carolina
College Grad	191	3,734
Some High School	44	702
Some College	234	3,860
No High School	1	57
Unknown	26	429

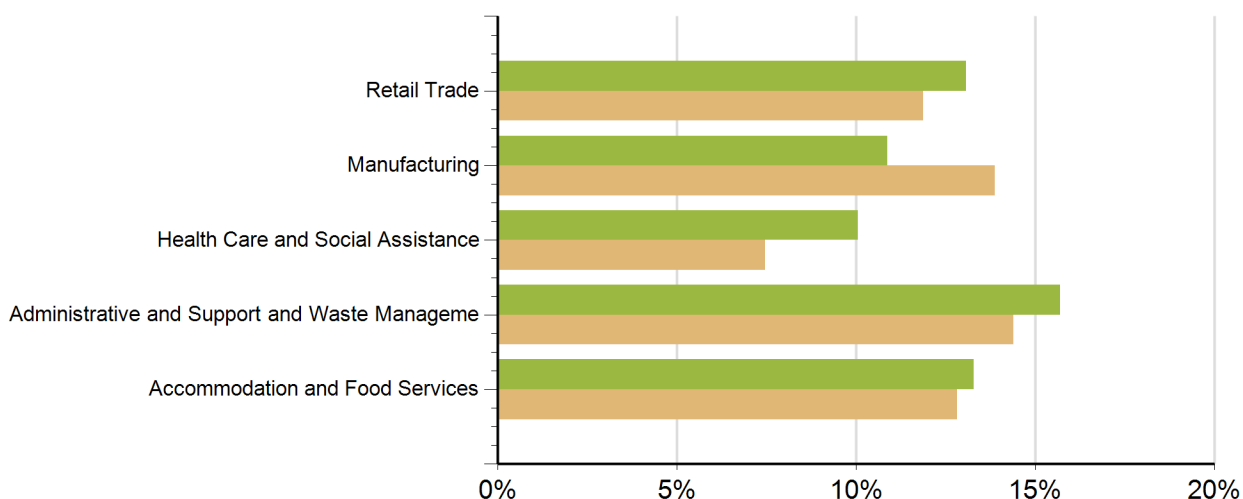


Source: SC Department of Employment & Workforce

## Characteristics of Unemployment Insurance Claims by Industry

Industry Groups with Largest Number of Claims

October-2018



Industry	Upstate Alliance	South Carolina
Manufacturing	54	1,224
Information	2	92
Management of Companies and Enterprises	5	34
Other Services (except Public Administration)	6	152
Educational Services	8	158
Utilities	2	13
Transportation and Warehousing	8	232
Health Care and Social Assistance	50	659
Wholesale Trade	15	309
Professional, Scientific, and Technical Servi	26	439
Retail Trade	65	1,048
Administrative and Support and Waste Managememe	78	1,270
Unknown	34	789
Accommodation and Food Services	66	1,131
Agriculture, Forestry, Fishing and Hunting	6	70
Construction	38	516
Finance and Insurance	10	199
Real Estate and Rental and Leasing	5	204
Arts, Entertainment, and Recreation	7	129
Public Administration	12	151

Source: SC Department of Employment & Workforce

## Characteristics of Unemployment Insurance Claims by Occupation

Occupation Groups with Largest Number of Claims

October-2018

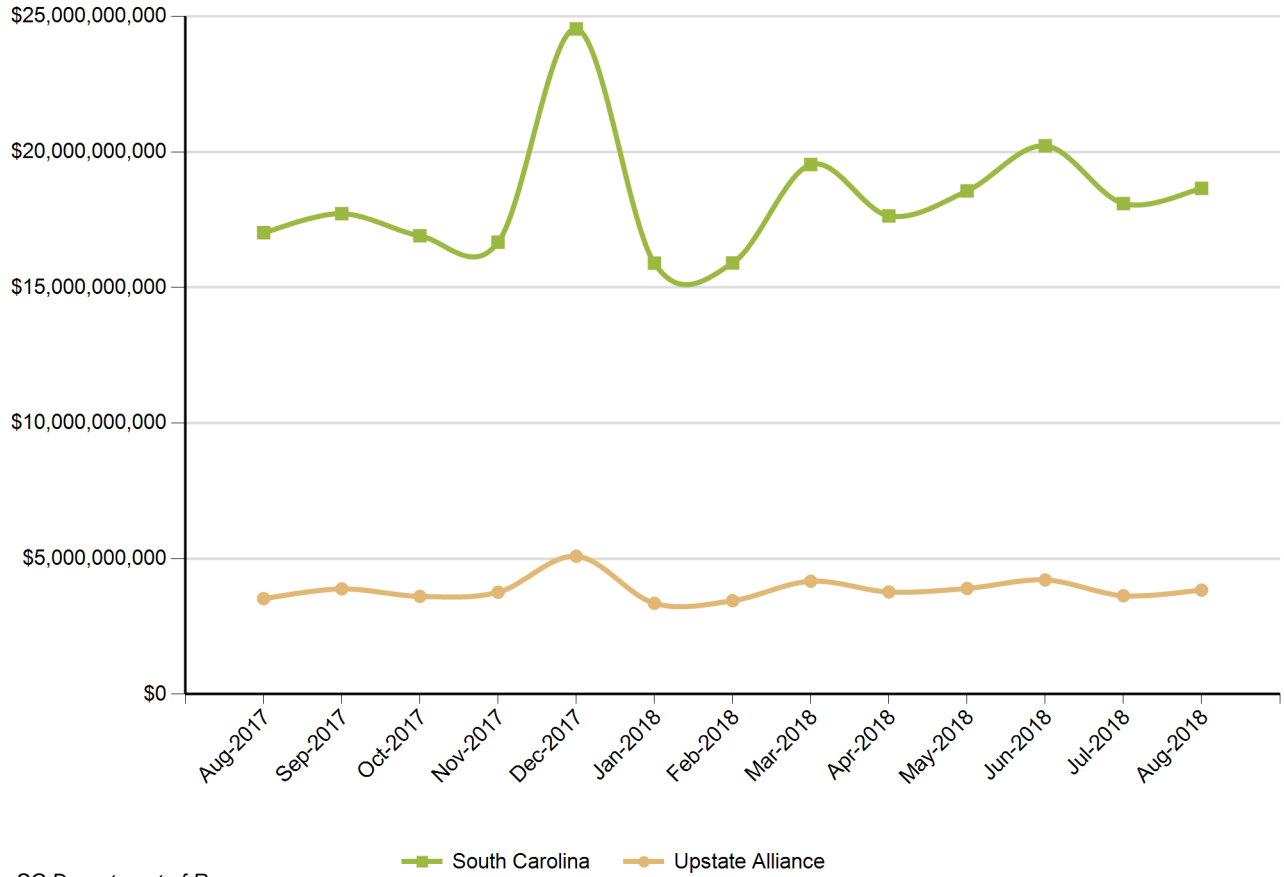


Occupation	Upstate Alliance	South Carolina
Architecture and Engineering Occupations	8	215
Arts, Design, Entertainment, Sports, and Media Occ	3	90
Building and Grounds Cleaning and Maintenance Occu	33	403
Business and Financial Operations Occupations	13	260
Community and Social Service Occupations	3	62
Computer and Mathematical Occupations	4	137
Construction and Extraction Occupations	21	430
Educational Instruction and Library Occupations	12	136
Farming, Fishing, and Forestry Occupations	4	55
Food Preparation and Serving Related Occupations	40	744
Healthcare Practitioners and Technical Occupations	19	206
Healthcare Support Occupations	13	237
Installation, Maintenance, and Repair Occupations	19	371
Legal Occupations	3	36
Life, Physical, and Social Science Occupations	7	76
Management Occupations	43	769
Office and Administrative Support Occupations	81	1,226
Personal Care and Service Occupations	4	127
Production Occupations	46	999
Protective Service Occupations	6	102
Sales and Related Occupations	46	761
Transportation and Material Moving Occupations	37	657
Unknown	32	718

Source: SC Department of Employment & Workforce

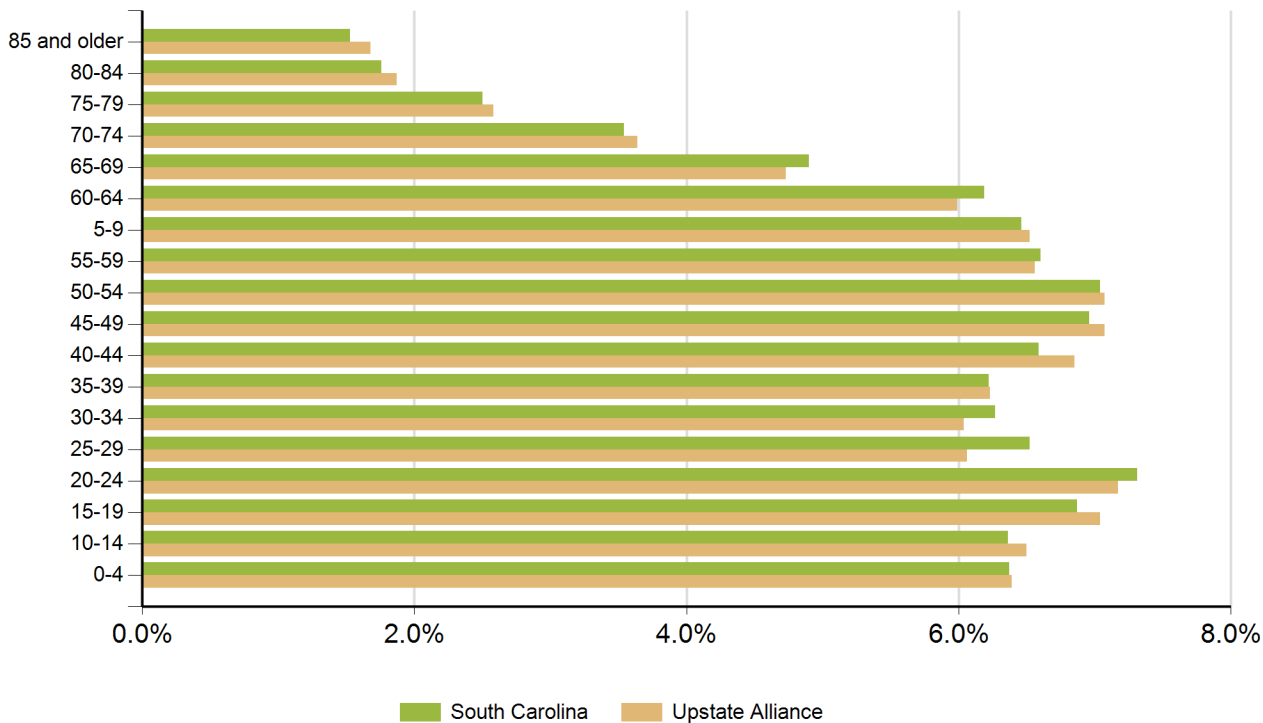


### Retail Sales



Source: SC Department of Revenue

### Population by Age



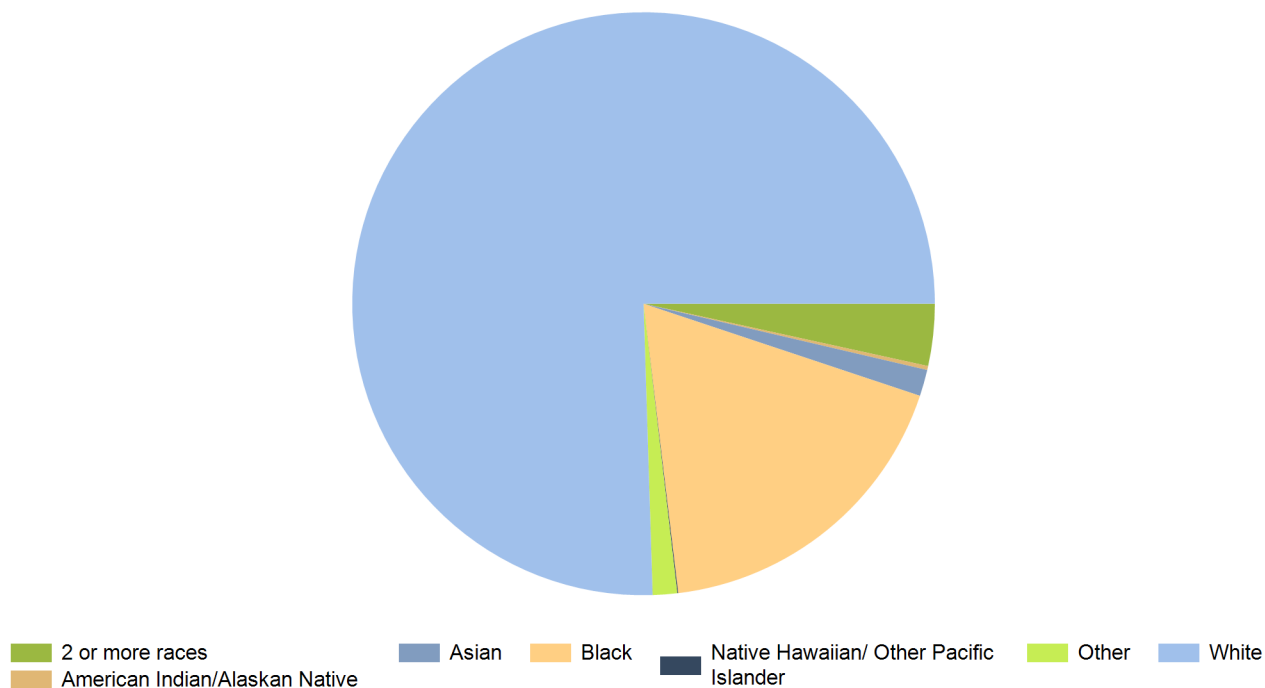
Age Range	Upstate Alliance	South Carolina	United States
0-4	87,886	298,242	20,052,112
5-9	89,626	302,111	20,409,060
10-14	89,397	297,443	20,672,609
15-19	96,748	321,540	21,715,074
20-24	98,497	342,237	22,099,887
25-29	83,294	305,167	21,243,365
30-34	83,090	293,464	20,467,912
35-39	85,631	291,183	19,876,161
40-44	94,166	308,158	20,998,001
45-49	97,248	325,660	22,109,946
50-54	97,181	329,431	22,396,322
55-59	90,178	309,061	20,165,892
60-64	82,324	289,690	17,479,211
65-69	64,997	229,251	13,189,508
70-74	50,066	165,797	9,767,522
75-79	35,527	117,187	7,438,750
80-84	25,700	82,223	5,781,697
85 and older	23,070	71,757	5,673,565

Source: US Census Bureau, American Community Survey

### Population by Race

Race	Upstate Alliance	%	South Carolina	%	United States	%
White	1,055,894	75.5%	3,144,146	66.0%	230,592,579	72.0%
Black	251,545	18.0%	1,298,534	27.3%	39,167,010	12.2%
American Indian/Alaskan Native	3,098	0.2%	14,732	0.3%	2,540,309	0.8%
Asian	20,472	1.5%	61,097	1.3%	15,231,962	4.8%
Native Hawaiian/ Other Pacific Islander	716	0.1%	2,128	0.0%	526,347	0.2%
2 or more races	47,980	3.4%	169,670	3.6%	17,464,666	5.5%
Other	18,911	1.4%	74,130	1.6%	14,746,054	4.6%

Source: US Census Bureau, American Community Survey



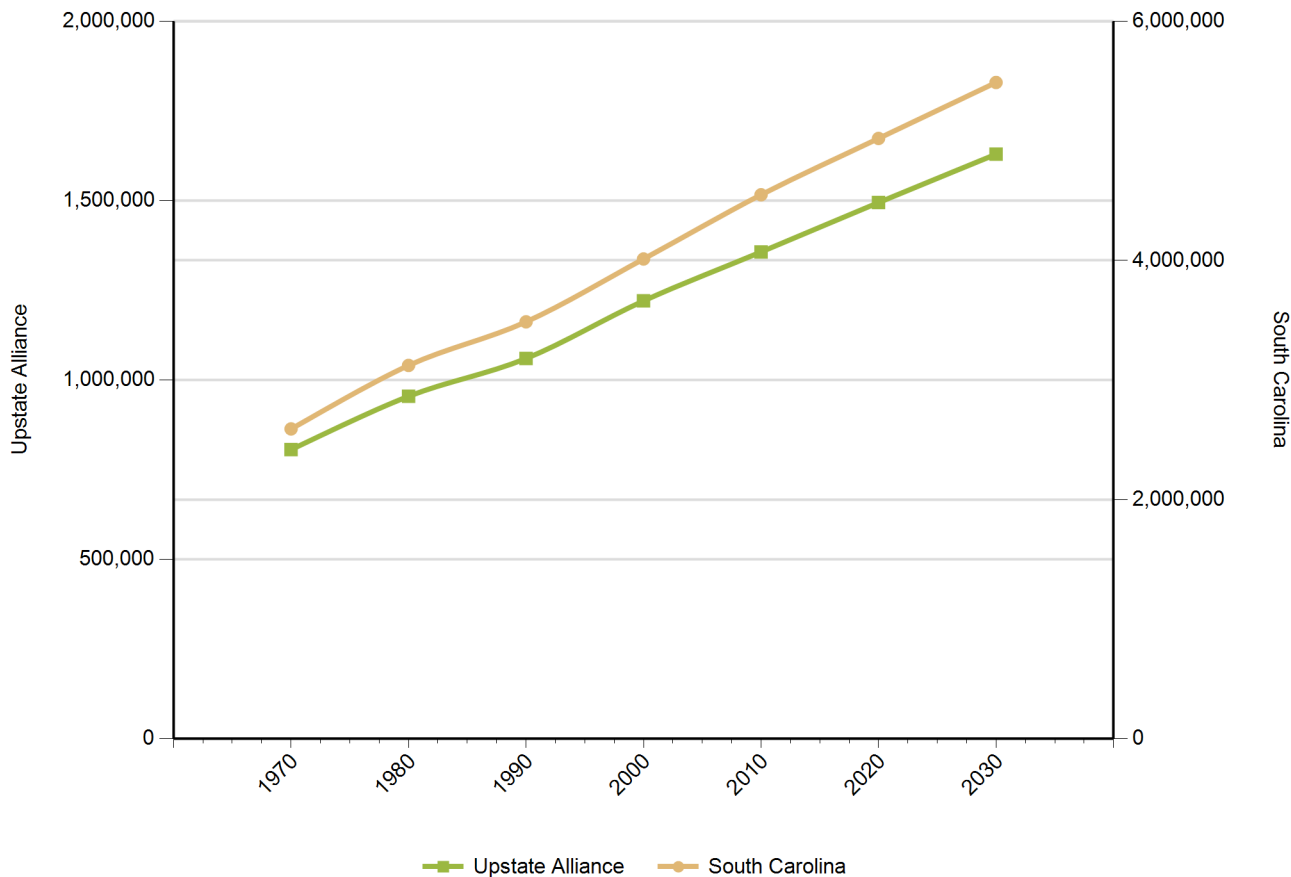
### Population by Gender

Gender	Upstate Alliance	South Carolina	United States
Female	707,162	2,403,297	158,289,182
Male	667,464	2,276,305	153,247,412

Source: US Census Bureau, American Community Survey

## Population Change

*Historical and Projected*



Year	Upstate Alliance	South Carolina
1970	806,066	2,590,713
1980	954,504	3,121,820
1990	1,059,891	3,486,310
2000	1,220,542	4,012,012
2010	1,356,900	4,549,150
2020	1,494,650	5,020,400
2030	1,629,510	5,488,460

Source: US Census Bureau

## Employers by Size of Establishment

Employees	Upstate Alliance	South Carolina
0 to 4	17,305	79,582
5 to 9	5,378	20,165
10 to 19	4,146	15,299
20 to 49	3,237	11,617
50 to 99	1,276	4,503
100 to 249	733	2,790
250 to 499	211	854
500 to 999	82	391
1000 +	36	304

## Employment by Size of Establishment

Employees	Upstate Alliance	South Carolina
0 to 4	26,854	112,852
5 to 9	35,979	134,677
10 to 19	56,525	207,583
20 to 49	98,139	354,792
50 to 99	87,927	310,957
100 to 249	109,421	422,086
250 to 499	73,580	293,191
500 to 999	55,504	263,096
1000 +	80,514	764,813

Source: SC Department of Employment & Workforce - Q1 2018

## 20 Largestest Employers

(Listed Alphabetically)

### Corporation Name

UPSTATE AFFILIATE ORGANIZATION

SCHOOL DISTRICT OF GREENVILLE COUNT

BMW MANUFACTURING CORP.

WAL-MART ASSOCIATES INC

MICHELIN NORTH AMERICA INC

SPARTANBURG REGIONAL MEDICAL CENTER

CLEMSON UNIVERSITY

MAU INC

SFH INC

INGLES MARKET INC

GHS PARTNERS IN HEALTH INC

ANDERSON AREA MEDICAL CENTER

ZF TRANSMISSIONS GREENVILLE LLC

HUMAN TECHNOLOGIES INC

GREENVILLE COUNTY COUNCIL

US POSTAL SERVICE

GE GAS TURBINE GREENVILLE LLC

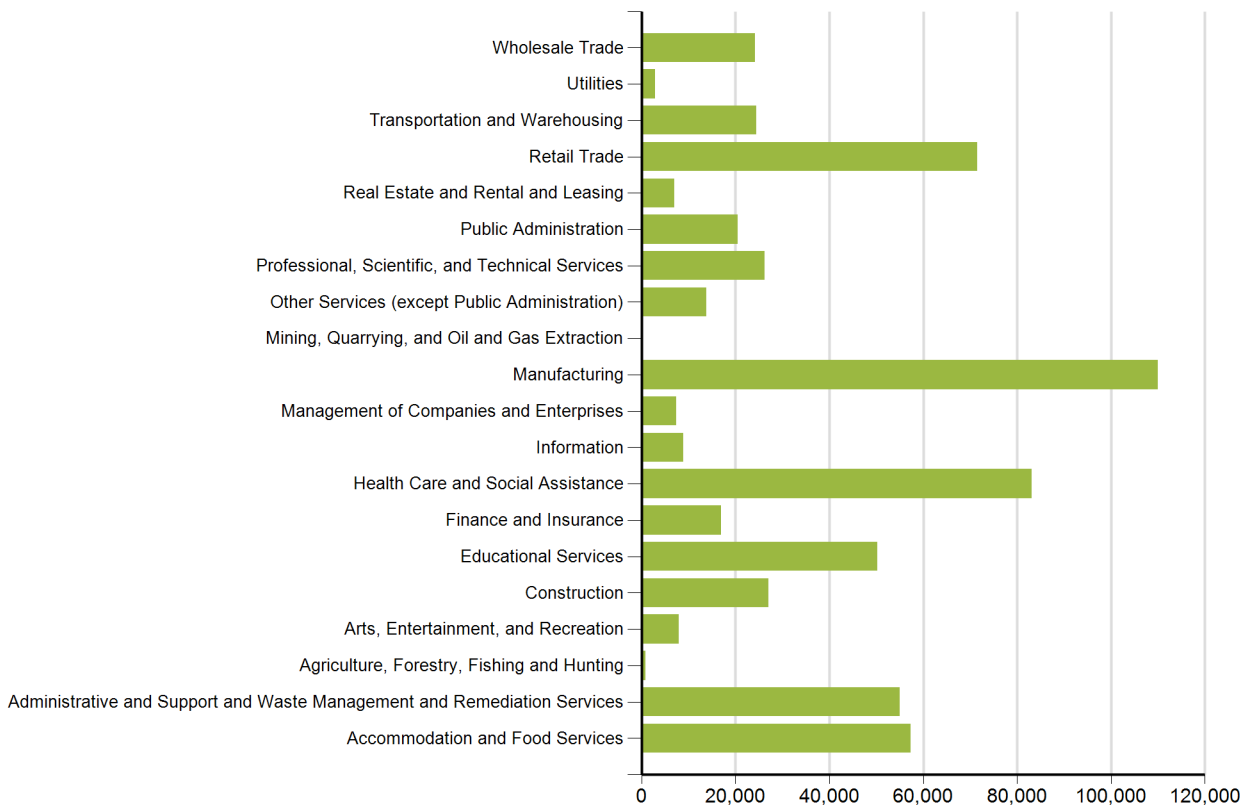
BI-LO INC.

PUBLIX SUPER MARKETS INC

SCHOOL DISTRICT OF PICKENS COUNTY

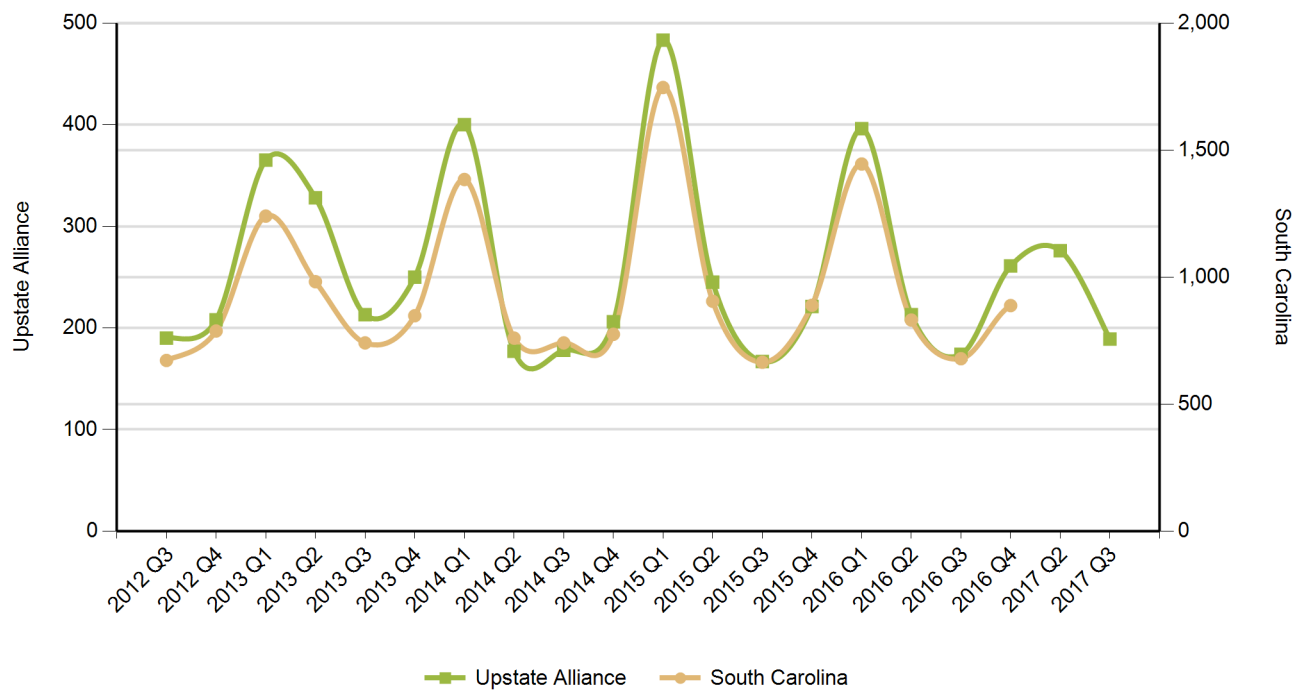
*Source: SC Department of Employment & Workforce - Q1 2018*

## Employment by Industry



Source: SC Department of Employment & Workforce  
 Quarterly Census of Employment and Wages (QCEW) - Q1 2018

### New Startup Firms



Quarter	Upstate Alliance	South Carolina
2017 Q3	189	
2017 Q2	276	
2016 Q4	261	888
2016 Q3	174	679
2016 Q2	213	831
2016 Q1	396	1,445
2015 Q4	221	889
2015 Q3	167	665
2015 Q2	245	905
2015 Q1	483	1,746
2014 Q4	206	775
2014 Q3	178	741
2014 Q2	177	760
2014 Q1	400	1,384
2013 Q4	250	848
2013 Q3	213	741
2013 Q2	328	982
2013 Q1	365	1,240
2012 Q4	208	788
2012 Q3	190	672

*Note: A firm is included in the count when it does not have a UI Account Number in the previous quarter and has a Setup Date that falls in the quarter displayed.  
Source: SC Department of Employment & Workforce*



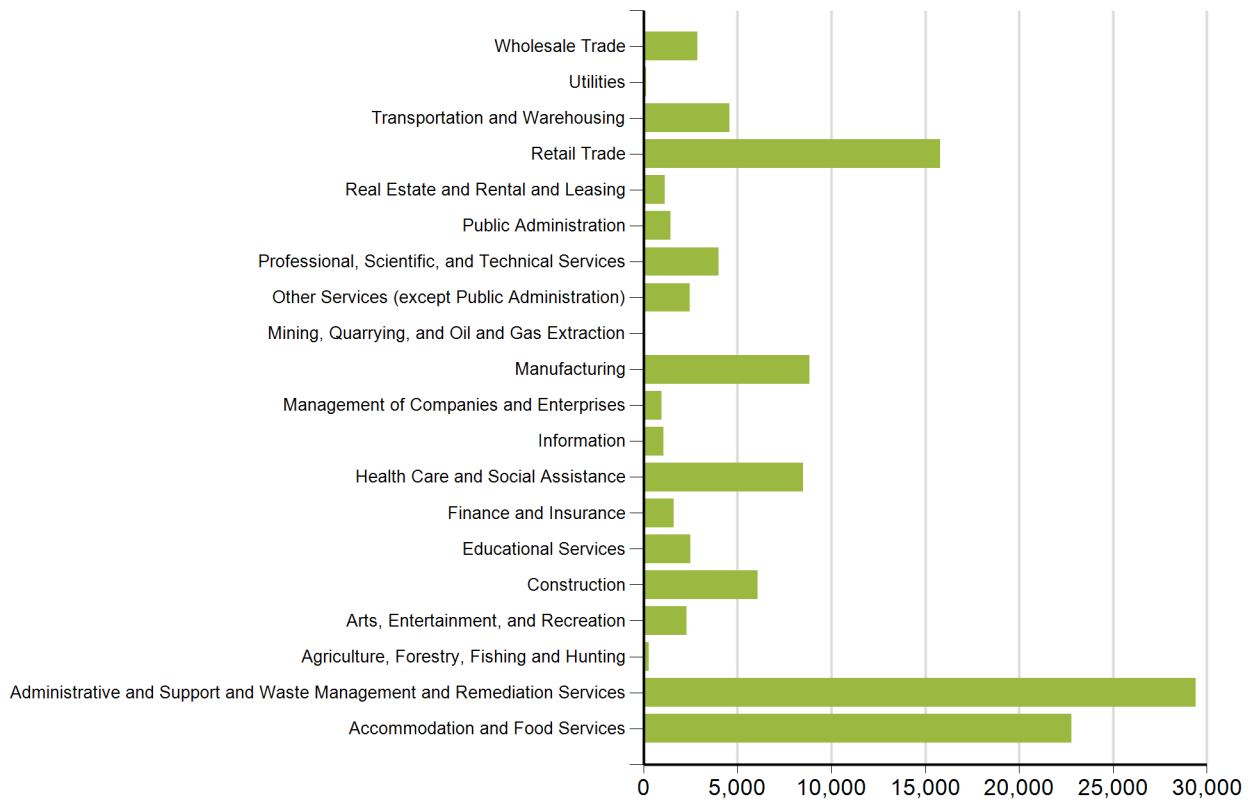
## Top 20 Occupational Openings

April 2016

Occupation Name (Soccode)	Job Opening
Heavy and Tractor-Trailer Truck Drivers (53-3032)	1,015
Registered Nurses (29-1141)	754
Industrial Engineers (17-2112)	395
Retail Salespersons (41-2031)	389
First-Line Supervisors of Retail Sales Workers (41-1011)	377
First-Line Supervisors of Food Preparation and Serving Workers (35-1012)	342
Maintenance and Repair Workers, General (49-9071)	335
First-Line Supervisors of Production and Operating Workers (51-1011)	304
Customer Service Representatives (43-4051)	302
First-Line Supervisors of Office and Administrative Support Workers (43-1011)	221
Physical Therapists (29-1123)	219
Laborers and Freight, Stock, and Material Movers, Hand (53-7062)	218
First-Line Supervisors of Mechanics, Installers, and Repairers (49-1011)	189
Light Truck Drivers (53-3033)	178
Accountants and Auditors (13-2011)	176
Sales Representatives, Wholesale and Manufacturing, Except Technical and Scientific Products (41-4012)	170
Automotive Service Technicians and Mechanics (49-3023)	166
Occupational Therapists (29-1122)	164
Social and Human Service Assistants (21-1093)	145
Speech-Language Pathologists (29-1127)	139

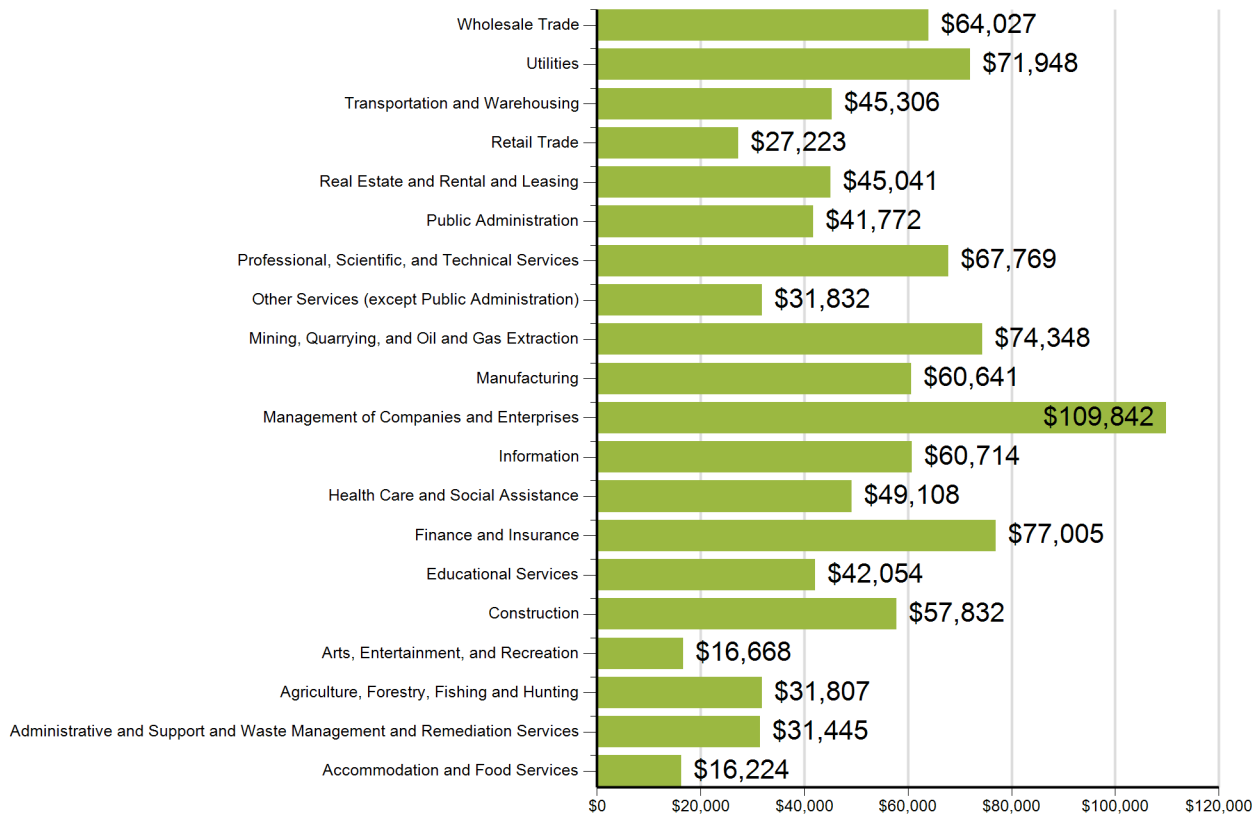
Source: SC Department of Employment & Workforce and The Conference Board's Help Wanted OnLine® Data Series

## New Hires by Industry



US Census Bureau, Local Employment Dynamics - Q2 2016

### Average Annual Wage by Industry



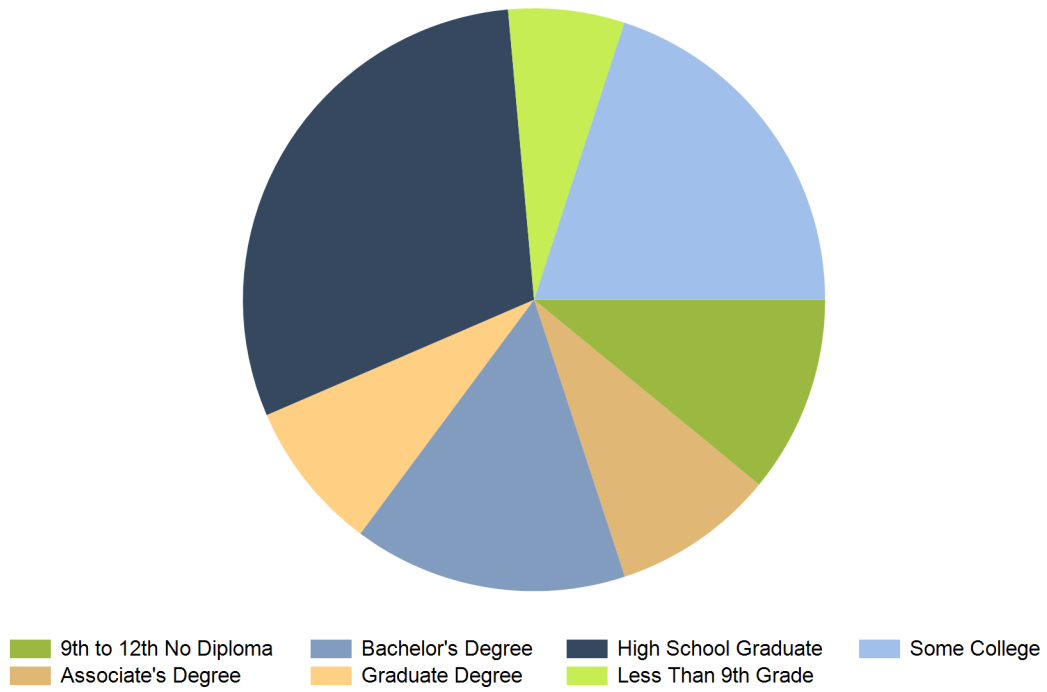
Source: SC Department of Employment & Workforce  
 Quarterly Census of Employment and Wages (QCEW) - Q1  
 2018

## Age of Workers by Industry

Industry	14-18	19-21	22-24	25-34	35-44	45-54	55-64	65+
Total, All Industries	13,832	27,692	36,614	129,533	128,837	135,977	101,427	33,530
Agriculture, Forestry, Fishing and Hunting	22	13	50	164	201	198	188	103
Mining, Quarrying, and Oil and Gas Extraction	0	2	6	54	63	94	87	17
Utilities	8	45	100	754	1,072	1,312	1,310	210
Construction	177	857	1,310	5,447	6,436	6,532	4,641	1,634
Manufacturing	261	1,829	4,166	19,534	24,420	30,712	22,231	4,068
Wholesale Trade	87	473	1,057	5,500	6,611	7,601	5,585	1,920
Retail Trade	3,321	7,220	6,772	16,024	12,248	12,373	9,689	4,687
Transportation and Warehousing	92	641	1,045	3,496	4,246	5,470	3,812	1,123
Information	130	218	506	2,711	2,619	2,185	1,290	396
Finance and Insurance	31	254	812	4,183	4,131	4,090	2,902	864
Real Estate and Rental and Leasing	29	181	368	1,373	1,392	1,448	1,133	550
Professional and Technical Services	138	532	1,298	6,118	5,970	5,904	4,659	1,869
Management of Companies and Enterprises	81	145	270	1,423	1,777	2,117	1,708	358
Administrative and Waste Services	373	3,242	4,663	14,147	10,867	10,023	6,586	2,593
Educational Services	238	676	1,819	9,912	12,476	13,713	11,962	4,152
Health Care and Social Assistance	234	1,685	3,593	17,128	17,587	16,915	13,131	4,017
Arts, Entertainment, and Recreation	590	760	653	1,429	1,219	1,135	897	574
Accommodation and Food Services	7,618	7,926	6,438	13,430	8,595	6,899	3,995	1,845
Other Services, Except Public Administration	252	615	825	2,833	2,718	2,918	2,257	1,183
Public Administration	117	362	837	3,857	4,168	4,318	3,340	1,366

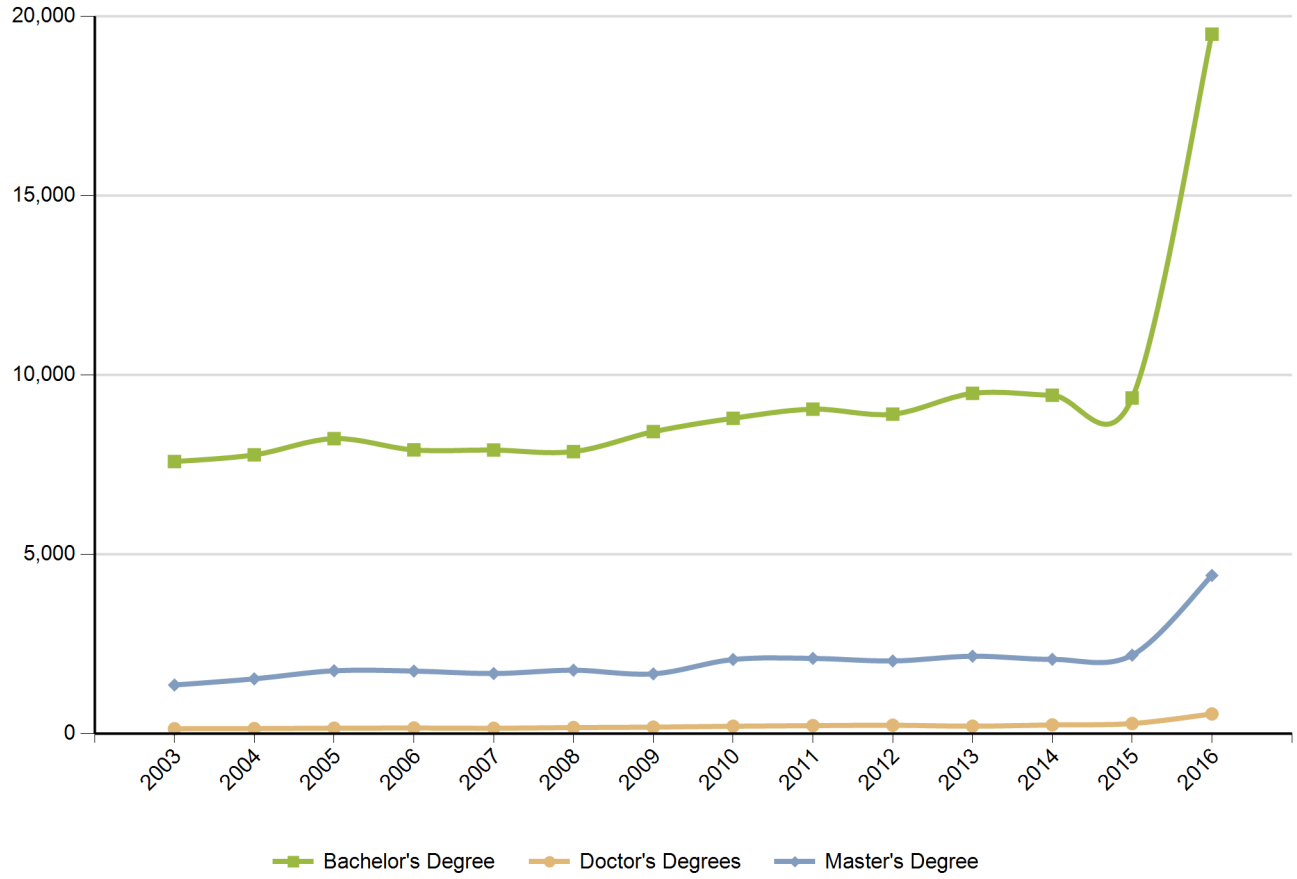
Source: US Census Bureau, Local Employment Dynamics - Q2 2016

## Educational Attainment (Population 25 Years and Older)



Source: US Census Bureau, American Community Survey - 2013 5-Year Estimates

## Graduate Trends



Source: Institute of Education Sciences (IES), Integrated Postsecondary Education Data System

## Educational Institutions

Academy of Hair Technology  
3715 E North St Ste F

Greenville, SC 29615  
864.322.0300  
<http://www.hairchamps.com>  
2016 Degrees Awarded: 88

Arclabs  
2615 Highway 153

Piedmont, SC 29673  
864.236.9995  
<http://www.arclabs.com>  
2016 Degrees Awarded: 322

Brown Mackie College-Greenville  
Two Liberty Square, 75 Beattie Plac

Greenville, SC 29601  
864.239.5300  
<http://>  
2016 Degrees Awarded: 464

Charzanne Beauty College  
1549 Hwy 72 E

Greenwood, SC 29649  
864.223.7321  
<http://charzannebeautycollege.com>  
2016 Degrees Awarded: 44

Converse College  
580 E Main St

Spartanburg, SC 29302  
864.596.9000  
<http://>  
2016 Degrees Awarded: 592

Forrest College  
601 E River Street

Anderson, SC 29624  
864.225.7653  
<http://www.forrestcollege.edu>  
2016 Degrees Awarded: 88

Greenville Technical College  
506 S Pleasantburg Dr

Greenville, SC 29606  
864.250.8000  
<http://www.gvltec.edu>  
2016 Degrees Awarded: 4832

Anderson University  
316 Boulevard

Anderson, SC 29621  
864.231.2000  
<http://www.andersonuniversity.edu>  
2016 Degrees Awarded: 1296

Bob Jones University  
1700 Wade Hampton Boulavard

Greenville, SC 29614  
864.242.5100  
<http://www.bju.edu>  
2016 Degrees Awarded: 1286

B-Unique Beauty and Barber Academy  
10 Liberty Lane

Greenville, SC 29607  
864.233.0056  
<http://bubba-online.com>  
2016 Degrees Awarded: 36

Clemson University  
201 Sikes Hall

Clemson, SC 29634  
864.656.4636  
<http://www.clemson.edu>  
2016 Degrees Awarded: 11492

Erskine College  
2 Washington St

Due West, SC 29639  
864.379.2131  
<http://www.erskine.edu>  
2016 Degrees Awarded: 298

Furman University  
3300 Poinsett Highway

Greenville, SC 29613  
864.294.2000  
<http://www.furman.edu>  
2016 Degrees Awarded: 1598

Kenneth Shuler School of Cosmetology-Greenville  
3528-A Earl E. Morris Jr. Highway

Greenville, SC 29611  
864.269.6886  
<http://kennethshuler.com>  
2016 Degrees Awarded: 124

Kenneth Shuler School of Cosmetology-Spartanburg  
1515 John B White SR Blvd

Spartanburg, SC 29301  
864.587.6000  
<http://www.kennethshuler.com>  
2016 Degrees Awarded: 192

Limestone College  
1115 College Drive

Gaffney, SC 29340  
800.795.7151  
<http://www.limestone.edu>  
2016 Degrees Awarded: 1208

Palmetto Beauty School  
2601 East Main Street

Spartanburg, SC 29307  
864.579.2550  
<http://www.palmettocosmo.com>  
2016 Degrees Awarded: 22

Piedmont Technical College  
620 North Emerald Road

Greenwood, SC 29646  
864.941.8324  
<http://www.ptc.edu>  
2016 Degrees Awarded: 2238

Sherman College of Straight Chiropractic  
2020 Springfield Rd

Spartanburg, SC 29316  
864.578.8770  
<http://www.sherman.edu>  
2016 Degrees Awarded: 178

Spartanburg Community College  
107 Community College Drive

Spartanburg, SC 29303  
864.592.4500  
<http://www.sccsc.edu>  
2016 Degrees Awarded: 1680

Strayer University-South Carolina  
555 N Pleasantburg Dr Ste 300

Greenville, SC 29607  
864.250.7000  
<http://www.strayer.edu/south-carolina/greenville>  
2016 Degrees Awarded: 660

Lander University  
320 Stanley Avenue

Greenwood, SC 29649  
864.388.8000  
<http://www.lander.edu>  
2016 Degrees Awarded: 922

North Greenville University  
7801 N. Tigerville Road

Tigerville, SC 29688  
864.977.7000  
<http://www.ngu.edu>  
2016 Degrees Awarded: 1016

Paul Mitchell the School-Greenville  
1215 A Woodruff Road

Greenville, SC 29607  
864.640.8111  
<http://paulmitchell.edu/greenville>  
2016 Degrees Awarded: 116

Presbyterian College  
503 South Broad Street

Clinton, SC 29325  
864.833.2820  
<http://https://www.presby.edu>  
2016 Degrees Awarded: 622

Southern Wesleyan University  
907 Wesleyan Drive

Central, SC 29630  
864.644.5000  
<http://www.swu.edu>  
2016 Degrees Awarded: 1178

Spartanburg Methodist College  
1000 Powell Mill Road

Spartanburg, SC 29301  
864.587.4000  
<http://https://www.smcsc.edu/>  
2016 Degrees Awarded: 412

Tri-County Technical College  
7900 U.S. Hwy 76

Pendleton, SC 29670  
864.646.1500  
<http://www.tctc.edu>  
2016 Degrees Awarded: 2546



University of South Carolina-Union  
309 East Academy St

Union, SC 29379  
864.429.8728  
<http://uscunion.sc.edu/>  
2016 Degrees Awarded: 100

Virginia College-Greenville  
78 Global Dr Ste 200

Greenville, SC 29607  
864.679.4900  
<http://www.vc.edu>  
2016 Degrees Awarded: 356

Wofford College  
429 N Church St

Spartanburg, SC 29303  
864.597.4000  
<http://www.wofford.edu>  
2016 Degrees Awarded: 944

University of South Carolina-Upstate  
800 University Way

Spartanburg, SC 29303  
864.503.5000  
<http://www.uscupstate.edu>  
2016 Degrees Awarded: 2360

Virginia College-Spartanburg  
8150 Warren H. Abernathy Highway

Spartanburg, SC 29301  
864.504.3200  
<http://www.vc.edu>  
2016 Degrees Awarded: 328

*Source: Institute of Education Sciences (IES), Integrated Postsecondary Education Data System*